

MIRAI MR10-01 Leg2 Microzooplankton abundance data

Last Modified: 2014-03-06

[ReadMe](#) [Observation Data](#)

Cruise ID: [MR10-01 Leg2](#)

Microzooplankton abundance data: Processed (PI)

Data Policy: [JAMSTEC](#)

Observation Items:

Science Keywords:

Data Information

Abundance of micro zooplankton collected using Niskin swater sampler at two time-series stations, K2 and S1.

Cruise Report

http://www.godac.jamstec.go.jp/catalog/data/doc_catalog/media/MR10-01_leg1-2_all.pdf

For Using Data

Principal Investigator

Minoru Kitamura (JAMSTEC)

Use Constraints

None

Data Citation

None

Instrument

Instrument:

Zooplankton samplings : Niskin water
sampler

Instrument Information:



Sample

Zoolankton

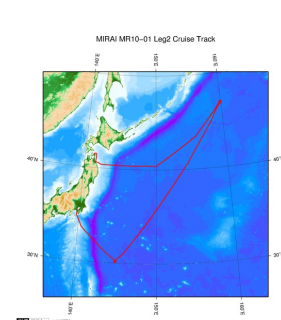
Sample ID

WZ01, WZ02, WZ03, WZ04

Data Format

Excell file

Related Information



[Enlarge Image](#)

MR10-01 Leg2

Ship Name: MIRAI

Period: 2010-02-07 - 2010-02-24

Chief Scientist: Kazuhiko Matsumoto (JAMSTEC)

Project Name: [Station K2, Station S1]

Proposal ▶ Change in material cycles and ecosystem by the climate change and its feed back

Title:

Update History

2014-03-06	An observation data was registerd.
2012-09-28	An observation data was registerd.

JAMSTEC

Site Policy

Privacy Policy

Application for Data and
Samples

Data Policy

What's New

Update History

Feeds

Lists

Publication List

Amount of Public Info.

Data

Map Search

Data Tree

Detailed Search

Information of the Ships

NATSUSHIMA

KAIYO

YOKOSUKA

MIRAI

KAIREI

CHIKYU

KAIMEI

SHINSEI MARU

HAKUHO MARU

Information of the Submersibles

KAIKO

SHINKAI 2000

SHINKAI 6500

DEEP TOW

HYPER-DOLPHIN

URASHIMA

YOKOSUKA DEEP TOW

6K Camera DEEP TOW

6K Sonar DEEP TOW

KM-ROV

POWER GRAB SAMPLER

Go to a Cruise Information

Cruise ID:

Go to a Dive Information

Dive ID:

(SHELL)
POWER GRAB SAMPLER
(CLOW)
BMS

Copyright 2011 Japan Agency for Marine-Earth Science and
Technology



JAMSTEC 国立研究開発法人
海洋研究開発機構
JAPAN AGENCY FOR MARINE-EARTH SCIENCE AND TECHNOLOGY

MIRAI MR10-01 Leg2 Microzooplankton abundance data

Last Modified: 2014-03-06

[ReadMe](#) [Observation Data](#)

Cruise ID: **MR10-01 Leg2**

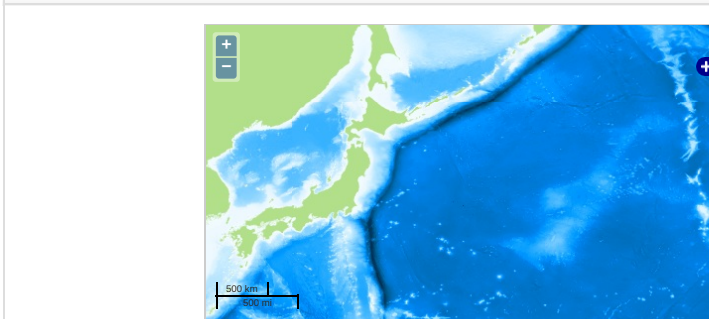
Microzooplankton abundance data Processed (PI)

Data Policy: [JAMSTEC](#)

Observation Items:

Science Keywords:

Observation Map



... Observation Line ... Navigation ... Observation, Dive Point, Hole

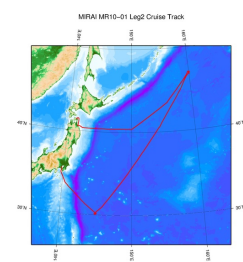
Imagery reproduced from ...

Data List

File names

☐ MR10-0_microzoop.zip

Related Information



[Enlarge Image](#)

MR10-01 Leg2

Ship Name: MIRAI

Period: 2010-02-07 - 2010-02-24

Chief Scientist: Kazuhiko Matsumoto (JAMSTEC)

Project Name: [Station K2, Station S1]

Proposal ▶ Change in material cycles and ecosystem by the climate change and its feed back

Title:

Update History

2014-03-06	An observation data was registered.
2012-09-28	An observation data was registered.

JAMSTEC

[Site Policy](#)

[Privacy Policy](#)

[Application for Data and Samples](#)

[Data Policy](#)

What's New

[Update History](#)

[Feeds](#)

Lists

[Publication List](#)

[Amount of Public Info.](#)

Data

[Map Search](#)

[Data Tree](#)

[Detailed Search](#)

Information of the Ships

[NATSUSHIMA](#)

[KAIYO](#)

[YOKOSUKA](#)

[MIRAI](#)

[KAIREI](#)

[CHIKYU](#)

[KAIMEI](#)

[SHINSEI MARU](#)

[HAKUHO MARU](#)

Information of the Submersibles

[KAIKO](#)

[SHINKAI 2000](#)

[SHINKAI 6500](#)

[DEEP TOW](#)

[HYPER-DOLPHIN](#)

[URASHIMA](#)

[YOKOSUKA DEEP TOW](#)

[6K Camera DEEP TOW](#)

[6K Sonar DEEP TOW](#)

[KM-ROV](#)

[POWER GRAB SAMPLER \(SHELL\)](#)

[POWER GRAB SAMPLER \(CLOW\)](#)

[BMS](#)

Go to a Cruise Information

Cruise ID:

Go to a Dive Information

Dive ID:

