

## MIRAI MR06-03 Leg2 Primary Productivity data

Last Modified: 2012-11-25

[ReadMe](#) [Observation Data](#)

Cruise ID: [MR06-03 Leg2](#)

Primary Productivity data: Processed (PI)

Data Policy: [JAMSTEC](#)

Observation Items:

Science Keywords:

### Data Information

Seawater, Primary Productivity

Please refer to the Observation Data : File name[mio2011\_ppd.pdf] for details.

### Cruise Report

[http://www.godac.jamstec.go.jp/catalog/data/doc\\_catalog/media/MR06-03\\_leg1-2\\_all.pdf](http://www.godac.jamstec.go.jp/catalog/data/doc_catalog/media/MR06-03_leg1-2_all.pdf)

### For Using Data

#### Principal Investigator

Makio C. Honda (JAMSTEC)

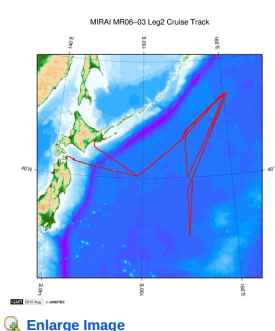
#### Use Constraints

See Observation Data : File name[mio2011\_ppd.pdf] about constrain of use.

#### Data Citation

See Observation Data : File name[mio2011\_ppd.pdf] about data citation.

## Related Information



### MR06-03 Leg2

Ship Name: MIRAI

Period: 2006-06-19 - 2006-07-25

Chief Scientist: Makio Honda (JAMSTEC)

Project Name: [Station K2, Station KNOT]

## Update History

Update Date	Update Content
2012-11-25	An observation data was registered.

### JAMSTEC

[Site Policy](#)

[Privacy Policy](#)

[Application for Data and Samples](#)

[Data Policy](#)

[What's New](#)

[Update History](#)

[Feeds](#)

### Lists

[Publication List](#)

[Amount of Public Info.](#)

### Data

[Map Search](#)

[Data Tree](#)

[Detailed Search](#)

### Information of the Ships

[NATSUSHIMA](#)

[KAIYO](#)

[YOKOSUKA](#)

[MIRAI](#)

[KAIREI](#)

[CHIKYU](#)

[KAIMEI](#)

[SHINSEI MARU](#)

[HAKUHO MARU](#)

### Information of the Submersibles

[KAIKO](#)

[SHINKAI 2000](#)

[SHINKAI 6500](#)

[DEEP TOW](#)

[HYPER-DOLPHIN](#)

[URASHIMA](#)

[YOKOSUKA DEEP TOW](#)

[6K Camera DEEP TOW](#)

[6K Sonar DEEP TOW](#)

[KM-ROV](#)

[POWER GRAB SAMPLER \(SHELL\)](#)

[POWER GRAB SAMPLER \(CLOW\)](#)

[BMS](#)

### Go to a Cruise Information

Cruise ID:

### Go to a Dive Information

Dive ID:



## MIRAI MR06-03 Leg2 Primary Productivity data

Last Modified: 2012-11-25

[ReadMe](#) [Observation Data](#)

Cruise ID: [MR06-03 Leg2](#)  
Primary Productivity data: Processed (PI)  
Data Policy: [JAMSTEC](#)  
Observation Items:  
Science Keywords:

### Observation Map



... Observation Line ... Navigation ... Observation, Dive Point, Hole

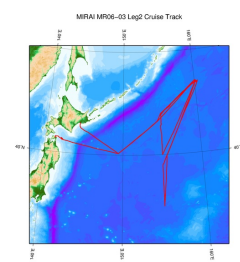
Imagery reproduced from ...

### Data List

[Add to Basket](#)

☐ File names  
☐ MR06-03\_leg2\_ppd.zip  
☐ mio2011\_ppd.pdf

### Related Information



[Enlarge Image](#)

#### MR06-03 Leg2

Ship Name: MIRAI  
Period: 2006-06-19 - 2006-07-25  
Chief Scientist: Makio Honda (JAMSTEC)  
Project Name: [Station K2, Station KNOT]

### Update History

2012-11-25 An observation data was registered.

#### JAMSTEC

[Site Policy](#)  
[Privacy Policy](#)  
[Application for Data and Samples](#)  
[Data Policy](#)

#### What's New

[Update History](#)  
[Feeds](#)

#### Lists

[Publication List](#)  
[Amount of Public Info.](#)

#### Data

[Map Search](#)  
[Data Tree](#)  
[Detailed Search](#)

#### Information of the Ships

NATSUSHIMA  
KAIYO  
YOKOSUKA  
MIRAI  
KAIREI  
CHIKYU  
KAIMEI  
SHINSEI MARU  
HAKUHO MARU

#### Information of the Submersibles

KAIKO  
SHINKAI 2000  
SHINKAI 6500  
DEEP TOW  
HYPER-DOLPHIN  
URASHIMA  
YOKOSUKA DEEP TOW  
6K Camera DEEP TOW  
6K Sonar DEEP TOW  
KM-ROV  
POWER GRAB SAMPLER (SHELL)  
POWER GRAB SAMPLER (CLOW)  
BMS

#### Go to a Cruise Information

Cruise ID:

#### Go to a Dive Information

Dive ID: