

MIRAI MR17-05C Multi-spectral excitation/emission fluorescence

Last Modified: 2019-09-17

[ReadMe](#) [Observation Data](#)

Cruise ID: [MR17-05C](#)

Multi-spectral excitation/emission fluorescence: Processed (PI)

Data Policy: [JAMSTEC](#)

Observation Items:

Science Keywords:

Data Information

Multi-spectral excitation/emission fluorescence of underway surface seawater was measured using Multi-Exciter fluorometer. Fluorescence data was taken every 15 min for 30 sec, and each 30-sec data was averaged to minimize the noise.

Cruise Report

http://www.godac.jamstec.go.jp/catalog/data/doc_catalog/media/MR17-05C_all.pdf

For Using Data

Principal Investigator

Amane Fujiwara (JAMSTEC)

Use Constraints

See [Terms and Conditions](#) about constrain of use.

Data Citation

Nishino, S., 2017, R/V Mirai Cruise Report MR17-05C, 209pp., JAMSTEC, Yokosuka, Japan.

Upon consultation in advance with the chief of investigation and the person(s) in charge of research issues who gathered that data, we request that the text of the results material contain a statement to the effect that it was obtained during the R/V Mirai cruise of MR17-05C, the Chief Scientist, Shigeto Nishino (JAMSTEC), and the following Principal Investigators (PIs) for gathering the data.

Chief Scientist

Shigeto Nishino

Japan Agency for Marine - Earth Science and Technology (JAMSTEC)

2-15 Natsushima, Yokosuka, Kanagawa 237-0061, Japan

Tel: +81-46-867-9487, Fax: +81-46-867-9437

E-mail: nishinos@jamstec.go.jp

PI

Amane Fujiwara (JAMSTEC)

Please also mention that this cruise was conducted under the Arctic Challenge for Sustainability (ArCS) Project, which was funded by the Ministry of Education, Culture, Sports, Science and Technology of Japan (MEXT).

Instrument

Instrument:

Multi-Exciter (JFE Advantech)

S/N:0040

Instrument Information:

Multi-Exciter is a multi-excitation fluorometer for aquatic algal class detection. It is equipped with a chlorophyll fluorescence probe with 9-wavelength excitation LEDs to measure fluorescence spectra, a turbidity meter, a temperature, and a depth sensor.



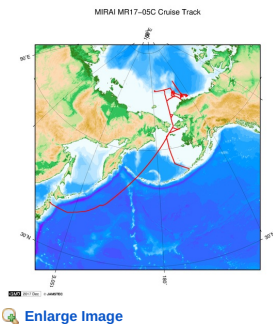
Data Format

Microsoft Excel format.

Time series of surface monitoring data is provided in "data" sheet.

Dark offset spectra measured milli-Q water in the dark is also provided in "offset" sheet.

Related Information



MR17-05C

Ship Name: MIRAI
Period: 2017-08-24 - 2017-10-01
Chief Scientist: Shigeto Nishino (JAMSTEC)
Project Name: [Arctic Ocean Climate System Reaserch]
Proposal ▶ Arctic Challenge for Sustainability (ArCS)
Title:

Update History

2019-09-17	An observation data was registerd.
------------	------------------------------------

JAMSTEC

Site Policy
Privacy Policy
Application for Data and Samples
Data Policy

What's New
Update History
Feeds

Lists

Publication List
Amount of Public Info.

Data

Map Search
Data Tree
Detailed Search

Information of the Ships

NATSUSHIMA
KAIYO
YOKOSUKA
MIRAI
KAIREI
CHIKYU
KAIMEI
SHINSEI MARU
HAKUHO MARU

Information of the Submersibles

KAIKO
SHINKAI 2000
SHINKAI 6500
DEEP TOW
HYPER-DOLPHIN
URASHIMA
YOKOSUKA DEEP TOW
6K Camera DEEP TOW
6K Sonar DEEP TOW
KM-ROV
POWER GRAB SAMPLER (SHELL)
POWER GRAB SAMPLER (CLOW)
BMS

Go to a Cruise Information

Cruise ID:

Go to a Dive Information

Dive ID:

Copyright 2011 Japan Agency for Marine-Earth Science and Technology



JAMSTEC 国立研究開発法人
海洋研究開発機構
JAPAN AGENCY FOR MARINE-EARTH SCIENCE AND TECHNOLOGY

MIRAI MR17-05C Multi-spectral excitation/emission fluorescence

Last Modified: 2019-09-17

[ReadMe](#) [Observation Data](#)

Cruise ID: **MR17-05C**

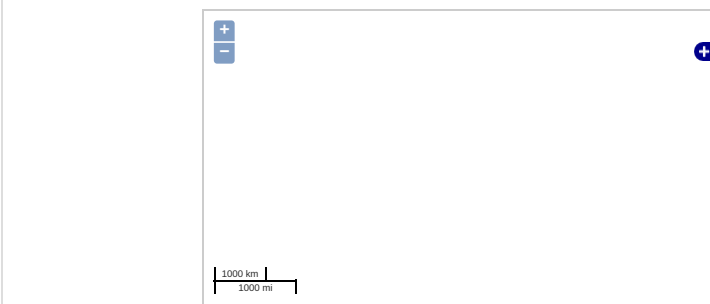
Multi-spectral excitation/emission fluorescence: Processed (PI)

Data Policy: [JAMSTEC](#)

Observation Items:

Science Keywords:

Observation Map



Imagery reproduced from ...

... Observation Line ... Navigation ... Observation, Dive Point, Hole

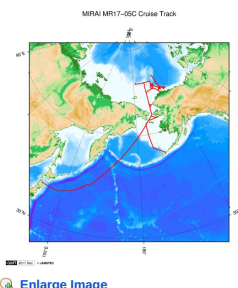
Data List

[Add to Basket](#)

File names

surface_fluorescence.xlsx

Related Information



[Enlarge Image](#)

MR17-05C

Ship Name: MIRAI

Period: 2017-08-24 - 2017-10-01

Chief Scientist: Shigeto Nishino (JAMSTEC)

Project Name: [Arctic Ocean Climate System Research]

Proposal ▶ Arctic Challenge for Sustainability (ArCS)

Title:

Update History

2019-09-17 An observation data was registered.

JAMSTEC

[Site Policy](#)

[Privacy Policy](#)

[Application for Data and Samples](#)

[Data Policy](#)

[What's New](#)

[Update History](#)

[Feeds](#)

Lists

[Publication List](#)

[Amount of Public Info.](#)

[Data](#)

[Map Search](#)

[Data Tree](#)

[Detailed Search](#)

Information of the Ships

[NATSUSHIMA](#)

[KAIYO](#)

[YOKOSUKA](#)

[MIRAI](#)

[KAIREI](#)

[CHIKYU](#)

[KAIMEI](#)

[SHINSEI MARU](#)

[HAKUHO MARU](#)

Information of the Submersibles

[KAIKO](#)

[SHINKAI 2000](#)

[SHINKAI 6500](#)

[DEEP TOW](#)

[HYPER-DOLPHIN](#)

[URASHIMA](#)

[YOKOSUKA DEEP TOW](#)

[6K Camera DEEP TOW](#)

[6K Sonar DEEP TOW](#)

[KM-ROV](#)

[POWER GRAB SAMPLER \(SHELL\)](#)

[POWER GRAB SAMPLER \(CLOW\)](#)

[BMS](#)

Go to a Cruise Information

Cruise ID:

Go to a Dive Information

Dive ID:

