

## MIRAI MR99-K04 Cloud Ceiling

Last Modified: 2014-07-12

[ReadMe](#) [Observation Data](#) [Data Format](#)

Cruise ID: [MR99-K04](#)

Cloud Ceiling: Raw

Data Policy: [JAMSTEC](#)

Observation Items: Cloud base height

Science Keywords:

ATMOSPHERE > CLOUDS > CLOUD  
BASE

Cruise Report

[http://www.godac.jamstec.go.jp/catalog/data/doc\\_catalog/media/MR99-K04\\_all.pdf](http://www.godac.jamstec.go.jp/catalog/data/doc_catalog/media/MR99-K04_all.pdf)

### For Using Data

#### Principal Investigator

Data Management Office

#### Use Constraints

See [Terms and Conditions](#) about constrain of use.

#### Data Citation

See [Terms and Conditions](#) about data citation.

### Instrument

Instrument:

Ceilometer (- MR12-05Leg3)



### Overview

Ceilometer is the system that measures cloud base height by laser pulse emitted vertically.

Up to three levels of cloud base can be detected by measuring the change of strength of backscatter signal.

And the cloud base height is calculated from the elapsed time from laser pulse emission to backscatter detection.

In case the cloud base is obscured, it measures the vertical visibility.

### System

Manufacturer: Vaisala Inc.  
Type: CT25K Ver2.01  
Serial number: T18102  
Measurement range: up to 7500m  
Resolution: 15m  
Sampling rate: 15-120 seconds available (60sec as default)  
Accuracy:  $\pm 2\%$  or  $\pm 1/2 \times \text{Resolution}$   
Location: Compass deck bow side (18 meters high from sea surface)  
Recording software: CT-VIEW Ver1.05 (before MR01-K04)  
CT-VIEW Ver2.10 (MR01-K05 or later)

### Note

(1) File naming rule for CYMMDDHH.DAT(Ver1.05) and AYMMDDHH.DAT(Ver2.10).

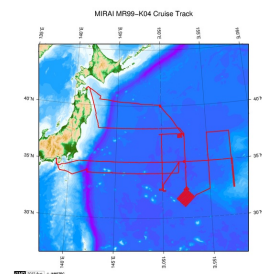
C or A : Fixed as 'C' or 'A'  
Y : Year in 1 digit  
MM : Recording start month (UTC)  
DD : Recording start day (UTC)  
HH : Recording start time (UTC)

(2) Adjustment for the height : No sea surface level adjustment is applied to the raw data.

(3) Invalid data information : Ceilometer data files include the invalid data in this cruise as follows.

Date/Time	File name	Remarks
		Date,Time data is invalid
		Format error data
		Lack of data
Start	Stop	
C9072619.DAT19990726,193636-C9072702.DAT19990727,021301	DataLack	
C9072814.DAT19990728,165201	Format	
C9081320.DAT19990813,202749	Format	

### Related Information



[Enlarge Image](#)

**MR99-K04**  
Ship Name: MIRAI  
Period: 1999-07-23 - 1999-08-19  
Chief Scientist: Hirofumi Yamamoto (JAMSTEC)

#### Update History

2014-07-12	An observation data was registerd.
2013-01-25	An observation data was registerd.

**JAMSTEC**  
[Site Policy](#)  
[Privacy Policy](#)  
[Application for Data and Samples](#)  
[Data Policy](#)  
**What's New**  
[Update History](#)  
[Feeds](#)

**Lists**  
[Publication List](#)  
[Amount of Public Info.](#)

**Data**  
[Map Search](#)  
[Data Tree](#)  
[Detailed Search](#)

**Information of the Ships**  
[NATSUSHIMA](#)  
[KAIYO](#)  
[YOKOSUKA](#)  
[MIRAI](#)  
[KAIREI](#)  
[CHIKYU](#)  
[KAIMEI](#)  
[SHINSEI MARU](#)  
[HAKUHO MARU](#)

**Information of the Submersibles**  
[KAIKO](#)  
[SHINKAI 2000](#)  
[SHINKAI 6500](#)  
[DEEP TOW](#)  
[HYPER-DOLPHIN](#)  
[URASHIMA](#)  
[YOKOSUKA DEEP TOW](#)  
[6K Camera DEEP TOW](#)  
[6K Sonar DEEP TOW](#)  
[KM-ROV](#)  
[POWER GRAB](#)  
[SAMPLER \(SHELL\)](#)  
[POWER GRAB](#)  
[SAMPLER \(CLOW\)](#)  
[BMS](#)

#### Go to a Cruise Information

Cruise ID:

#### Go to a Dive Information

Dive ID:

Copyright 2011 Japan Agency for Marine-Earth Science and Technology

**JAMSTEC** 国立研究開発法人 海洋研究開発機構  
JAPAN AGENCY FOR MARINE-EARTH SCIENCE AND TECHNOLOGY

## MIRAI MR99-K04 Cloud Ceiling

Last Modified: 2014-07-12

ReadMe Observation Data **Data Format**

Cruise ID: [MR99-K04](#)

Cloud Ceiling: Raw

Data Policy: [JAMSTEC](#)

### Ceiling Raw

The record length of the data file is 56 bytes.

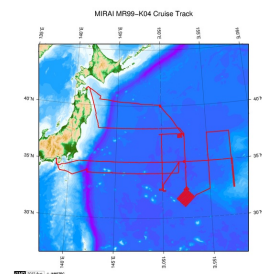
No.	Column	Content	Format	Remarks
1	1 - 8	Date	i4,i2,i2	YYYYMMDD (UTC)
2	10 - 15	Time	i2,i2,i2	hhmmss (UTC)
3	17 - 19	Operating software	a3	'CT0' : CT-VIEW 'CL0' : CL-VIEW
4	20 - 21	Software version	i2	Version of operating software
5	22	Data status	i1	1: Cloud base height/vertical visibility data 2: Cloud base height/vertical visibility, backscatter signal 6: Cloud base height/vertical visibility, cloud amount/height of cloud layer 7: Cloud base height/vertical visibility, backscatter signal, cloud amount/height of cloud layer
6	23	Spare character	a1	
7	25	Detection status	i1	0: Clear 1: One cloud base detected 2: Two cloud bases detected 3: Three cloud bases detected 4: Full obscuration determined but no cloud base detected 5: Some obscuration detected but determined to transparent
8	26	Warning and alarm information	a1	0: Self-check OK W: At least one warning active, no alarms A: At least one alarm active See No.12:observation information
9	28 - 32	Lowest cloud base height or vertical visibility	i5	In the case of detection status is 1,2 or 3: Lowest cloud base height In the case of detection status is 4: Calculation of vertical visibility In the case of detection status is 0 or 5: ///// Unit: See No.12:observation information
10	34 - 38	Second lowest cloud base height or highest signal detected	i5	In the case of detection status is 2 or 3: Second lowest cloud base height In the case of detection status is 4: Maximum height that a signal was detected In the case of detection status is 0,1 or 5: ///// Unit: See No.12:observation information
11	40 - 44	Highest cloud base height	i5	In the case of detection status is 3: Highest cloud base height In the case of detection status is 0,1,2,4,5: ///// Unit: See No.12:observation information
12	46 - 53	Observation information	a8	*1
13	55 - 56	Terminator	a2	CR+LF

\*1: Observation information

The information is presented using 8 bytes characters. Each character, indicated in hexadecimal character, shows the following meanings;

Byte	Hexadecimal character (0:on, -:off)																Message(A:alarm, W:warning)
	0	1	2	3	4	5	6	7	8	9	A	B	C	D	E	F	
1	-	-	-	-	-	-	-	-	0	0	0	0	0	0	0	0	Laser temperature shut-off(A)
	-	-	-	-	0	0	0	0	-	-	-	0	0	0	0	0	Laser failure(A)
	-	-	0	0	-	-	0	0	-	-	0	0	-	-	0	0	Receiver failure(A)
	-	0	-	0	-	0	-	0	-	0	-	0	-	0	-	0	Voltage failure(A)
2	-	-	-	-	-	-	-	-	0	0	0	0	0	0	0	0	Spare(A)
	-	-	-	-	0	0	0	0	-	-	-	0	0	0	0	0	Spare(A)
	-	-	0	0	-	-	0	0	-	-	0	0	-	-	0	0	Spare(A)
	-	0	-	0	-	0	-	0	-	0	-	0	-	0	-	0	Spare(A)
3	-	-	-	-	-	-	-	-	0	0	0	0	0	0	0	0	Windows contaminated(W)
	-	-	-	-	0	0	0	0	-	-	-	-	0	0	0	0	Battery low(W)
	-	-	0	0	-	-	0	0	-	-	0	0	-	-	0	0	Laser power low(W)
	-	0	-	0	-	0	-	0	-	0	-	0	-	0	-	0	Laser temperature high or low(W)
4	-	-	-	-	-	-	-	-	0	0	0	0	0	0	0	0	Internal temperature high or low(W)
	-	-	-	-	0	0	0	0	-	-	-	-	0	0	0	0	Voltage high or low(W)
	-	-	0	0	-	-	0	0	-	-	0	0	-	-	0	0	Relative Humidity is > 85%(W)
	-	0	-	0	-	0	-	0	-	0	-	0	-	0	-	0	Receiver cross-talk compensation poor(W)
5	-	-	-	-	-	-	-	-	0	0	0	0	0	0	0	0	Blower suspect(W)
	-	-	-	-	0	0	0	0	-	-	-	-	0	0	0	0	Spare(W)
	-	-	0	0	-	-	0	0	-	-	0	0	-	-	0	0	Spare(W)
	-	0	-	0	-	0	-	0	-	0	-	0	-	0	-	0	Spare(W)
6	-	-	-	-	-	-	-	-	0	0	0	0	0	0	0	0	Blower is ON
	-	-	-	-	0	0	0	0	-	-	-	-	0	0	0	0	Blower heater is ON
	-	-	0	0	-	-	0	0	-	-	0	0	-	-	0	0	Internal heater is ON
	-	0	-	0	-	0	-	0	-	0	-	0	-	0	-	0	Units are METERS if ON , else FEET
7	-	-	-	-	-	-	-	-	0	0	0	0	0	0	0	0	Polling mode is ON
	-	-	-	-	0	0	0	0	-	-	-	-	0	0	0	0	Working from battery
	-	-	0	0	-	-	0	0	-	-	0	0	-	-	0	0	Single sequence mode is ON
	-	0	-	0	-	0	-	0	-	0	-	0	-	0	-	0	Manual settings are effective
8	-	-	-	-	-	-	-	-	0	0	0	0	0	0	0	0	Tilt angle is > 45 degrees
	-	-	-	-	0	0	0	0	-	-	-	-	0	0	0	0	High background radiance
	-	-	0	0	-	-	0	0	-	-	0	0	-	-	0	0	Manual blower control
	-	0	-	0	-	0	-	0	-	0	-	0	-	0	-	0	Spare

### Related Information



[Enlarge Image](#)

**MR99-K04**  
Ship Name: MIRAI  
Period: 1999-07-23 - 1999-08-19  
Chief Scientist: Hirofumi Yamamoto (JAMSTEC)

#### Update History

2014-07-12	An observation data was registerd.
2013-01-25	An observation data was registerd.

**JAMSTEC**  
[Site Policy](#)  
[Privacy Policy](#)  
[Application for Data and Samples](#)  
[Data Policy](#)  
**What's New**  
[Update History](#)  
[Feeds](#)

**Lists**  
[Publication List](#)  
[Amount of Public Info.](#)

**Data**  
[Map Search](#)  
[Data Tree](#)  
[Detailed Search](#)

**Information of the Ships**  
[NATSUSHIMA](#)  
[KAIYO](#)  
[YOKOSUKA](#)  
[MIRAI](#)  
[KAIREI](#)  
[CHIKYU](#)  
[KAIMEI](#)  
[SHINSEI MARU](#)  
[HAKUHO MARU](#)

**Information of the Submersibles**  
[KAIKO](#)  
[SHINKAI 2000](#)  
[SHINKAI 6500](#)  
[DEEP TOW](#)  
[HYPER-DOLPHIN](#)  
[URASHIMA](#)  
[YOKOSUKA DEEP TOW](#)  
[6K Camera DEEP TOW](#)  
[6K Sonar DEEP TOW](#)  
[KM-ROV](#)  
[POWER GRAB](#)  
[SAMPLER \(SHELL\)](#)  
[POWER GRAB](#)  
[SAMPLER \(CLOW\)](#)  
[BMS](#)

#### Go to a Cruise Information

Cruise ID:

#### Go to a Dive Information

Dive ID:

Copyright 2011 Japan Agency for Marine-Earth Science and Technology

 **JAMSTEC** 国立研究開発法人 海洋研究開発機構  
JAPAN AGENCY FOR MARINE-EARTH SCIENCE AND TECHNOLOGY

## MIRAI MR99-K04 Cloud Ceiling

Last Modified: 2014-07-12

[ReadMe](#) [Observation Data](#) [Data Format](#)

Cruise ID: [MR99-K04](#)

Cloud Ceiling: Raw

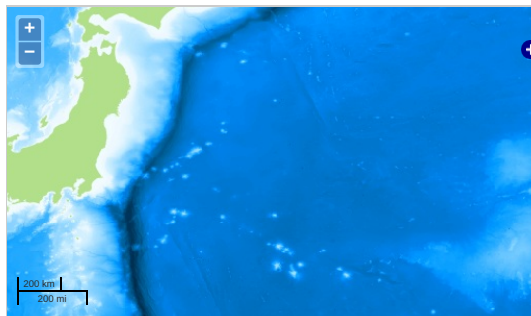
Data Policy: [JAMSTEC](#)

Observation Items: Cloud base height

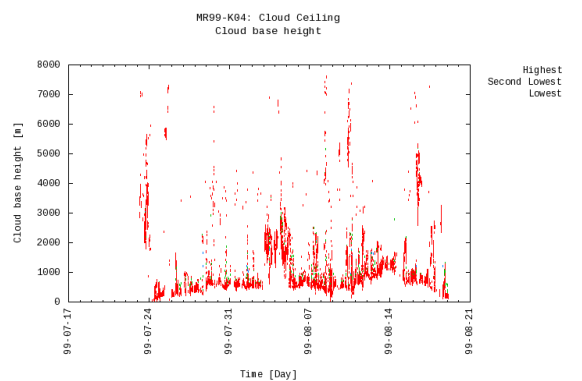
Science Keywords:

ATMOSPHERE > CLOUDS > CLOUD  
BASE

### Observation Map



### Figures



### Data List

[Add to Basket](#)

<input type="checkbox"/>	File names
<input type="checkbox"/>	C9072301.DAT
<input type="checkbox"/>	C9072307.DAT
<input type="checkbox"/>	C9072313.DAT
<input type="checkbox"/>	C9072319.DAT
<input type="checkbox"/>	C9072401.DAT
<input type="checkbox"/>	C9072407.DAT
<input type="checkbox"/>	C9072413.DAT
<input type="checkbox"/>	C9072419.DAT
<input type="checkbox"/>	C9072501.DAT
<input type="checkbox"/>	C9072507.DAT
<input type="checkbox"/>	C9072513.DAT
<input type="checkbox"/>	C9072519.DAT
<input type="checkbox"/>	C9072601.DAT
<input type="checkbox"/>	C9072607.DAT
<input type="checkbox"/>	C9072613.DAT
<input type="checkbox"/>	C9072619.DAT
<input type="checkbox"/>	C9072702.DAT
<input type="checkbox"/>	C9072708.DAT
<input type="checkbox"/>	C9072714.DAT
<input type="checkbox"/>	C9072720.DAT
<input type="checkbox"/>	C9072802.DAT
<input type="checkbox"/>	C9072808.DAT
<input type="checkbox"/>	C9072814.DAT
<input type="checkbox"/>	C9072820.DAT
<input type="checkbox"/>	C9072902.DAT
<input type="checkbox"/>	C9072908.DAT
<input type="checkbox"/>	C9072914.DAT
<input type="checkbox"/>	C9072920.DAT

C907290.DAT

File names

C9073002.DAT

C9073008.DAT

C9073014.DAT

C9073020.DAT

C9073102.DAT

C9073108.DAT

C9073114.DAT

C9073120.DAT

C9080102.DAT

C9080108.DAT

C9080114.DAT

C9080120.DAT

C9080202.DAT

C9080208.DAT

C9080214.DAT

C9080220.DAT

C9080302.DAT

C9080308.DAT

C9080314.DAT

C9080320.DAT

C9080402.DAT

C9080408.DAT

C9080414.DAT

C9080420.DAT

C9080502.DAT

C9080508.DAT

C9080514.DAT

C9080520.DAT

C9080602.DAT

C9080608.DAT

C9080614.DAT

C9080620.DAT

C9080702.DAT

C9080708.DAT

C9080714.DAT

C9080720.DAT

C9080802.DAT

C9080808.DAT

C9080814.DAT

C9080820.DAT

C9080902.DAT

C9080908.DAT

C9080914.DAT

C9080920.DAT

C9081002.DAT

C9081008.DAT

C9081014.DAT

C9081020.DAT

C9081102.DAT

C9081108.DAT

C9081114.DAT

C9081120.DAT

C9081202.DAT

C9081208.DAT

C9081214.DAT

C9081220.DAT

C9081302.DAT

C9081308.DAT

C9081314.DAT

C9081320.DAT

C9081402.DAT

C9081408.DAT

C9081414.DAT

C9081420.DAT

C9081502.DAT

C9081508.DAT

C9081514.DAT

C9081520.DAT

C9081602.DAT

C9081608.DAT

C9081614.DAT

C9081620.DAT

C9081702.DAT

C9081708.DAT

C9081714.DAT

C9081720.DAT

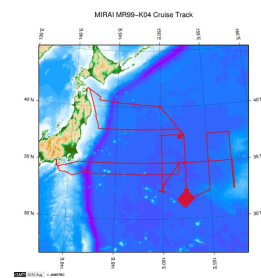
C9081802.DAT

C9081808.DAT

C9081814.DAT

C9081820.DAT

#### Related Information



 [Enlarge Image](#)

#### MR99-K04

Ship Name: MIRAI  
Period: 1999-07-23 - 1999-08-19  
Chief Scientist: Hirofumi Yamamoto (JAMSTEC)

#### Update History

2014-07-12	An observation data was registered.
2013-01-25	An observation data was registered.

JAMSTEC  
[Site Policy](#)  
[Privacy Policy](#)  
[Application for Data and Samples](#)  
[Data Policy](#)  
**What's New**  
[Update History](#)  
[Feeds](#)

**Lists**  
[Publication List](#)  
[Amount of Public Info.](#)  
**Data**  
[Map Search](#)  
[Data Tree](#)  
[Detailed Search](#)

**Information of the Ships**  
[NATSUSHIMA](#)  
[KAIYO](#)  
[YOKOSUKA](#)  
[MIRAI](#)  
[KAIREI](#)  
[CHIKYU](#)  
[KAIMEI](#)  
[SHINSEI MARU](#)  
[HAKUHO MARU](#)

**Information of the Submersibles**  
[KAIKO](#)  
[SHINKAI 2000](#)  
[SHINKAI 6500](#)  
[DEEP TOW](#)  
[HYPER-DOLPHIN](#)  
[URASHIMA](#)  
[YOKOSUKA DEEP TOW](#)  
[6K Camera DEEP TOW](#)  
[6K Sonar DEEP TOW](#)  
[KM-ROV](#)  
[POWER GRAB](#)  
[SAMPLER \(SHELL\)](#)  
[POWER GRAB](#)  
[SAMPLER \(CLOW\)](#)  
[BMS](#)

#### Go to a Cruise Information

Cruise ID:

#### Go to a Dive Information

Dive ID:

Copyright 2011 Japan Agency for Marine-Earth Science and Technology



**JAMSTEC** 国立研究開発法人  
海洋研究開発機構  
JAPAN AGENCY FOR MARINE-EARTH SCIENCE AND TECHNOLOGY