

## KAIYO KY97-09 Leg1 Shipboard Acoustic Doppler Current Profiler (ADCP)

Last Modified: 2013-01-25

[ReadMe](#) [Observation Data](#) [Data Format](#)

Cruise ID: [KY97-09 Leg1](#)

Shipboard Acoustic Doppler Current Profiler (ADCP): Processed (PI)

Data Policy: [JAMSTEC](#)

Observation Items: Depth, Absolute velocity (zonal, meridional and vertical)

Science Keywords:

OCEANS > OCEAN CIRCULATION > OCEAN CURRENTS

Cruise Report

[http://www.godac.jamstec.go.jp/catalog/data/doc\\_catalog/media/KY97-09\\_all.pdf](http://www.godac.jamstec.go.jp/catalog/data/doc_catalog/media/KY97-09_all.pdf)

### For Using Data

#### Principal Investigator

Yuji Kashino (JAMSTEC)

#### Use Constraints

See [Terms and Conditions](#) about constrain of use.

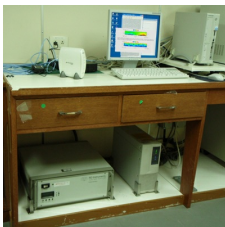
#### Data Citation

See [Terms and Conditions](#) about data citation.

### Instrument

Instrument:

Shipboard acoustic doppler current profiler (ADCP)



### About this data

R/V Kaiyo mounts the VM(Vessel-Mounted)-NB(Narrow-Band) ADCP(Acoustic Doppler Current Plofiler) manufactured by RD Instrument. The serial number of transducer is 501 of the frequency 75KHz and the 30 degree beam angle. The ADCP was set as listed below.

Depth Cell Length : 16m

No. of Depth Cell : 64

Avarage Time : 300 sec

Tilt misalignment : 0.0

Pitch offset : 0.0

Roll offset : 0.0

Please see the cruise report for details of data.

Documentations of CODAS software are available on the web site at University of Hawaii.

[http://currents.soest.hawaii.edu/docs/adcp\\_doc/](http://currents.soest.hawaii.edu/docs/adcp_doc/)

### Related Information



#### [KY97-09 Leg1](#)

Ship Name: KAIYO

Period: 1997-08-03 - 1997-08-15

Chief Scientist: Kunio Yoneyama (JAMSTEC)

### Update History

2013-01-25

An observation data was registerd.

#### JAMSTEC

[Site Policy](#)  
[Privacy Policy](#)  
[Application for Data and Samples](#)  
[Data Policy](#)

[What's New](#)  
[Update History](#)  
[Feeds](#)

#### Lists

[Publication List](#)  
[Amount of Public Info.](#)

#### Data

[Map Search](#)  
[Data Tree](#)  
[Detailed Search](#)

#### Information of the Ships

NATSUSHIMA  
KAIYO  
YOKOSUKA  
MIRAI  
KAIREI  
CHIKYU  
KAIMEI  
SHINSEI MARU  
HAKUHO MARU

#### Information of the Submersibles

KAIKO  
SHINKAI 2000  
SHINKAI 6500  
DEEP TOW  
HYPER-DOLPHIN  
URASHIMA  
YOKOSUKA DEEP TOW  
6K Camera DEEP TOW  
6K Sonar DEEP TOW

#### Go to a Cruise Information

Cruise ID:

#### Go to a Dive Information

Dive ID:

KM-ROV  
POWER GRAB SAMPLER  
(SHELL)  
POWER GRAB SAMPLER  
(CLOW)  
BMS

Copyright 2011 Japan Agency for Marine-Earth Science and  
Technology



**JAMSTEC** 国立研究開発法人  
海洋研究開発機構  
JAPAN AGENCY FOR MARINE-EARTH SCIENCE AND TECHNOLOGY

## KAIYO KY97-09 Leg1 Shipboard Acoustic Doppler Current Profiler (ADCP)

Last Modified: 2013-01-25

[ReadMe](#) [Observation Data](#) [Data Format](#)

Cruise ID: [KY97-09 Leg1](#)

Shipboard Acoustic Doppler Current Profiler (ADCP) Processed (PI)

Data Policy: [JAMSTEC](#)

ADCP CODASblk

None

### Related Information



#### [KY97-09 Leg1](#)

Ship Name: KAIYO

Period: 1997-08-03 - 1997-08-15

Chief Scientist: Kunio Yoneyama (JAMSTEC)

### Update History

Date	Description
2013-01-25	An observation data was registered.

**JAMSTEC**  
[Site Policy](#)  
[Privacy Policy](#)  
[Application for Data and Samples](#)  
[Data Policy](#)

**What's New**  
[Update History](#)  
[Feeds](#)

**Lists**  
[Publication List](#)  
[Amount of Public Info.](#)  
**Data**  
[Map Search](#)  
[Data Tree](#)  
[Detailed Search](#)

**Information of the Ships**  
[NATSUSHIMA](#)  
[KAIYO](#)  
[YOKOSUKA](#)  
[MIRAI](#)  
[KAIREI](#)  
[CHIKYU](#)  
[KAIMEI](#)  
[SHINSEI MARU](#)  
[HAKUHO MARU](#)

**Information of the Submersibles**  
[KAIKO](#)  
[SHINKAI 2000](#)  
[SHINKAI 6500](#)  
[DEEP TOW](#)  
[HYPER-DOLPHIN](#)  
[URASHIMA](#)  
[YOKOSUKA DEEP TOW](#)  
[6K Camera DEEP TOW](#)  
[6K Sonar DEEP TOW](#)  
[KM-ROV](#)  
[POWER GRAB SAMPLER \(SHELL\)](#)  
[POWER GRAB SAMPLER \(CLOW\)](#)  
[BMS](#)

#### Go to a Cruise Information

Cruise ID:

#### Go to a Dive Information

Dive ID:



## KAIYO KY97-09 Leg1 Shipboard Acoustic Doppler Current Profiler (ADCP)

Last Modified: 2013-01-25

[ReadMe](#) [Observation Data](#) [Data Format](#)

Cruise ID: [KY97-09 Leg1](#)

Shipboard Acoustic Doppler Current Profiler (ADCP): Processed (PI)

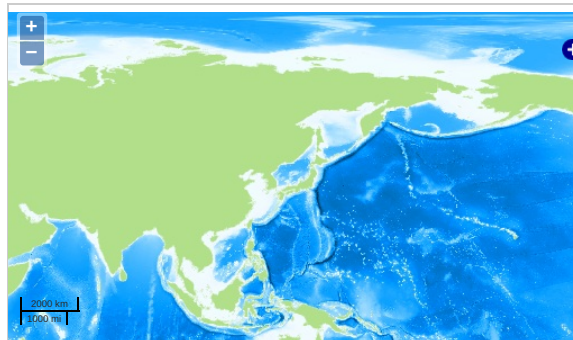
Data Policy: [JAMSTEC](#)

Observation Items: Depth, Absolute velocity (zonal, meridional and vertical)

Science Keywords:

[OCEANS](#) > [OCEAN CIRCULATION](#) > [OCEAN CURRENTS](#)

### Observation Map



— ... Observation Line — ... Navigation ● ... Observation, Dive Point, Hole

Imagery reproduced from ...

### Data List

[Add to Basket](#)

#### ☐ File names

<input type="checkbox"/>	k9709001.blk
<input type="checkbox"/>	k9709002.blk
<input type="checkbox"/>	k9709003.blk
<input type="checkbox"/>	k9709004.blk
<input type="checkbox"/>	k9709005.blk
<input type="checkbox"/>	k9709006.blk
<input type="checkbox"/>	k9709007.blk
<input type="checkbox"/>	k9709008.blk
<input type="checkbox"/>	k9709009.blk
<input type="checkbox"/>	k9709010.blk
<input type="checkbox"/>	k9709011.blk
<input type="checkbox"/>	k9709012.blk
<input type="checkbox"/>	k9709013.blk
<input type="checkbox"/>	k9709014.blk
<input type="checkbox"/>	k9709015.blk
<input type="checkbox"/>	k9709016.blk
<input type="checkbox"/>	k9709017.blk
<input type="checkbox"/>	k9709018.blk
<input type="checkbox"/>	k9709019.blk
<input type="checkbox"/>	k9709020.blk
<input type="checkbox"/>	k9709021.blk
<input type="checkbox"/>	k9709022.blk
<input type="checkbox"/>	k9709023.blk
<input type="checkbox"/>	k9709024.blk
<input type="checkbox"/>	k9709025.blk
<input type="checkbox"/>	k9709026.blk
<input type="checkbox"/>	k9709027.blk
<input type="checkbox"/>	k9709028.blk
<input type="checkbox"/>	k9709dir.blk

### Related Information

NO IMAGE

#### KY97-09 Leg1

Ship Name: KAIYO

Period: 1997-08-03 - 1997-08-15

Chief Scientist: Kunio Yoneyama (JAMSTEC)

#### Update History

2013-01-25	An observation data was registerd.
------------	------------------------------------

#### JAMSTEC

[Site Policy](#)

[Privacy Policy](#)

[Application for Data and Samples](#)

[Data Policy](#)

[What's New](#)

[Update History](#)

[Feeds](#)

#### Lists

[Publication List](#)

[Amount of Public Info.](#)

#### Data

[Map Search](#)

[Data Tree](#)

[Detailed Search](#)

#### Information of the Ships

[NATSUSHIMA](#)

[KAIYO](#)

[YOKOSUKA](#)

[MIRAI](#)

[KAIREI](#)

[CHIKYU](#)

[KAIMEI](#)

[SHINSEI MARU](#)

[HAKUHO MARU](#)

#### Information of the Submersibles

[KAIKO](#)

[SHINKAI 2000](#)

[SHINKAI 6500](#)

[DEEP TOW](#)

[HYPER-DOLPHIN](#)

[URASHIMA](#)

[YOKOSUKA DEEP TOW](#)

[6K Camera DEEP TOW](#)

[6K Sonar DEEP TOW](#)

[KM-ROV](#)

[POWER GRAB SAMPLER \(SHELL\)](#)

[POWER GRAB SAMPLER \(CLOW\)](#)

[BMS](#)

#### Go to a Cruise Information

Cruise ID:

#### Go to a Dive Information

Dive ID:

Copyright 2011 Japan Agency for Marine-Earth Science and Technology



**JAMSTEC**

国立研究開発法人  
海洋研究開発機構

JAPAN AGENCY FOR MARINE-EARTH SCIENCE AND TECHNOLOGY