

MIRAI MR16-09 Leg1 Underway Thermosalinograph

Last Modified: 2019-07-31

[ReadMe](#) [Observation Data](#) [Data Format](#)

Cruise ID: [MR16-09 Leg1](#)

Underway Thermosalinograph: Processed (PI)

Data Policy: [JAMSTEC](#)

Observation Items: Temperature, Salinity, Dissolved oxygen, Fluorescence, Chlorophyll, Turbidity

Science Keywords:

OCEANS > OCEAN CHEMISTRY > OXYGEN
OCEANS > OCEAN CHEMISTRY > SALINITY
BIOSPHERE > VEGETATION > CHLOROPHYLL
OCEANS > OCEAN CHEMISTRY > CHLOROPHYLL
OCEANS > SALINITY/DENSITY > SALINITY
OCEANS > OCEAN > SEA SURFACE
OCEANS TEMPERATURE TEMPERATURE
OCEANS > OCEAN CHEMISTRY > SUSPENDED SOLIDS
OCEANS > OCEAN OPTICS > FLUORESCENCE

Cruise Report

http://www.godac.jamstec.go.jp/catalog/data/doc_catalog/media/MR16-09_leg1-4_all.pdf

For Using Data

Principal Investigator

Hiroshi Uchida (JAMSTEC)

Use Constraints

See [Terms and Conditions](#) about constrain of use.

Data Citation

See [Terms and Conditions](#) about data citation.

Instrument

Instrument:

Continuous sea surface water

monitoring system (MR14-03 -)



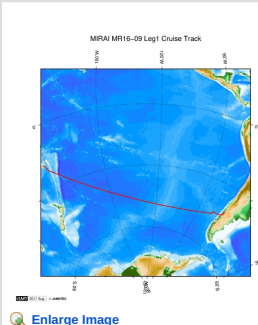
Data Citation

Refer [WHP P17E Revisit in 2017 Data Book](#) (doi: 10.17596/0000003) .

Overview

For details about observation, please refer to the Data book "[WHP P17E Revisit in 2017 Data Book](#)" (doi: 10.17596/0000003) .

Related Information



MR16-09 Leg1

Ship Name: MIRAI

Period: 2016-12-26 - 2017-01-17

Chief Scientist: Akihiko Murata (JAMSTEC)

Proposal ▶ Ship-borne measurements of aerosols in the marine atmosphere: Investigation of potential influence of marine aerosol particles on the climate;

 [Enlarge Image](#)

Update History

2019-07-31	An observation data was registered.
2019-03-09	An observation data was registered.
2019-03-07	An observation data was registered.
2019-01-31	An observation data was registered.
2017-09-27	An observation data was registered.

JAMSTEC
Site Policy
Privacy Policy
Application for Data and Samples
Data Policy
What's New
Update History
Feeds

Lists
Publication List
Amount of Public Info.
Data
Map Search
Data Tree
Detailed Search

Information of the Ships
NATSUSHIMA
KAIYO
YOKOSUKA
MIRAI
KAIREI
CHIKYU
KAIMEI
SHINSEI MARU
HAKUHO MARU

Information of the Submersibles
KAIKO
SHINKAI 2000
SHINKAI 6500
DEEP TOW
HYPER-DOLPHIN
URASHIMA
YOKOSUKA DEEP TOW
6K Camera DEEP TOW
6K Sonar DEEP TOW
KM-ROV
POWER GRAB
SAMPLER (SHELL)
POWER GRAB
SAMPLER (CLOW)
BMS

Go to a Cruise Information

Cruise ID:

Go to a Dive Information

Dive ID:



MIRAI MR16-09 Leg1 Underway Thermosalinograph

Last Modified: 2019-07-31

[ReadMe](#) [Observation Data](#) [Data Format](#)

Cruise ID: [MR16-09 Leg1](#)

Underway Thermosalinograph: Processed (PI)

Data Policy: [JAMSTEC](#)

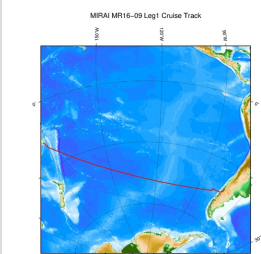
Data Format

Column No.	Column Heading Mnemonic	Units Mnemonic	Reporting Precision FORTRAN Format	Comments
1	EXPCODE	-	A12	Expedition code
2	DATE	-	I8	Date
3	TIME	UTC	I4	Time
4	LATITUDE	degrees	F10.5	Latitude
5	LONGITUDE	degrees	F10.5	Longitude
6	SPEED	knot	F6.1	Ship speed
7	FLOW	litter/minute	F6.1	Flow rate of the seawater sample
8	INTAKE-TEMPERATURE	ITS-90	F9.4	Temperature measured by the temperature sensor (SBE38) before the pump close to the seawater intake
9	INTAKE-TEMPERATURE_FLAG	-	I1	INTAKE-TEMPERATURE data quality flag (see below)
10	TSG-TEMPERATURE	ITS-90	F9.4	Temperature measured by the thermosalinograph (SBE45)
11	TSG-TEMPERATURE_FLAG	-	I1	TSG-TEMPERATURE data quality flag (see below)
12	TSG-SALINITY	PSS-78	F9.4	Practical Salinity measured by the thermosalinograph (SBE45)
13	TSG-SALINITY_FLAG	-	I1	TSG-SALINITY data quality flag (see below)
14	SALINITY	PSS-78	F9.4	Practical Salinity measured by the AUTOSAL salinometer
15	SALINITY_FLAG	-	I1	SALINITY data quality flag (see below)
16	TSG-OXYGEN	μmol/kg	F9.2	Dissolved oxygen measured by the oxygen sensor (RINKO-II)
17	TSG-OXYGEN_FLAG	-	I1	TSG-OXYGEN data quality flag (see below)
18	OXYGEN	μmol/kg	F9.2	Dissolved oxygen measured by the oxygen titlator
19	OXYGEN_FLAG	-	I1	OXYGEN data quality flag (see below)
20	FLUORESCENCE	RFU	F9.2	Fluorescence measured by the C3 fluorometer
21	FLUORESCENCE_FLAG	-	I1	FLUORESCENCE data quality flag (see below)
22	TSG-CHLOROPHYLL-A	mg/cum	F9.3	Chlorophyll-a estimated from the FLUORESCENCE data
23	TSG-CHLOROPHYLL-A_FLAG	-	I1	TSG-CHLOROPHYLL-A data quality flag (see below)
24	CHLOROPHYLL-A	mg/cum	F9.2	Chlorophyll-a measured by the Turner fluorometer (10-AU-005)
25	CHLOROPHYLL-A_FLAG	-	I1	CHLOROPHYLL-A data quality flag (see below)
26	TURBIDITY	NTU	F9.2	Turbidity measured by the C3 turbidity meter
27	TURBIDITY_FLAG	-	I1	TURBIDITY data quality flag (see below)

Data quality flag

- 1: Not calibrated (post-cruise calibration)
- 2: Acceptable measurement
- 3: Questionable measurement
- 4: Bad measurement
- 5: Not reported
- 6: Interpolated
- 7: Despiked
- 8: Low-pass filtered
- 9: Not sampled

Related Information



[Enlarge Image](#)

MR16-09 Leg1

Ship Name: MIRAI

Period: 2016-12-26 - 2017-01-17

Chief Scientist: Akihiko Murata (JAMSTEC)

Proposal ▶ Ship-borne measurements of aerosols in the marine atmosphere: Investigation of potential influence of marine aerosol particles on the climate;

Update History

2019-07-31	An observation data was registered.
2019-03-09	An observation data was registered.
2019-03-07	An observation data was registered.
2019-01-31	An observation data was registered.
2017-09-27	An observation data was registered.

Application for Data and Samples
Data Policy

What's New
Update History
Feeds

Data
Map Search
Data Tree
Detailed Search

KAIYO
YOKOSUKA
MIRAI
KAIREI
CHIKYU
KAIMEI
SHINSEI MARU
HAKUHO MARU

SHINKAI 2000
SHINKAI 6500
DEEP TOW
HYPER-DOLPHIN
URASHIMA
YOKOSUKA DEEP TOW
6K Camera DEEP TOW
6K Sonar DEEP TOW
KM-ROV
POWER GRAB
SAMPLER (SHELL)
POWER GRAB
SAMPLER (CLOW)
BMS

Go to a Dive Information

Dive ID:

Copyright 2011 Japan Agency for Marine-Earth Science and Technology



MIRAI MR16-09 Leg1 Underway Thermosalinograph

Last Modified: 2019-07-31

[ReadMe](#) [Observation Data](#) [Data Format](#)

Cruise ID: [MR16-09 Leg1](#)

Underway Thermosalinograph: Processed (PI)

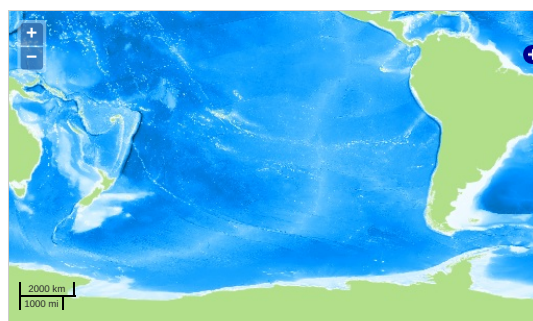
Data Policy: [JAMSTEC](#)

Observation Items: Temperature, Salinity, Dissolved oxygen, Fluorescence, Chlorophyll, Turbidity

Science Keywords:

OCEANS	> OCEAN CHEMISTRY	> OXYGEN
OCEANS	> OCEAN CHEMISTRY	> SALINITY
BIOSPHERE	> VEGETATION	> CHLOROPHYLL
OCEANS	> OCEAN CHEMISTRY	> CHLOROPHYLL
OCEANS	> SALINITY/DENSITY	> SALINITY
OCEANS	> OCEAN	> SEA SURFACE
OCEANS	TEMPERATURE	TEMPERATURE
OCEANS	> OCEAN CHEMISTRY	> SUSPENDED SOLIDS
OCEANS	> OCEAN OPTICS	> FLUORESCENCE

Observation Map



— ... Observation Line — ... Navigation — ... Observation, Dive Point, Hole

Imagery reproduced from ...

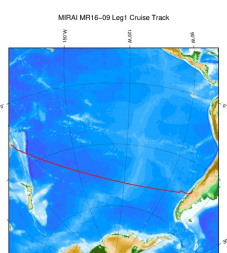
Data List

[Add to Basket](#)

File names

☐ 49NZ20161227_tsg.csv

Related Information



MR16-09 Leg1

Ship Name: MIRAI

Period: 2016-12-26 - 2017-01-17

Chief Scientist: Akihiko Murata (JAMSTEC)

Proposal ▶ Ship-borne measurements of aerosols in the marine atmosphere: Investigation of potential influence of marine aerosol particles on the climate;

Title:

[Enlarge Image](#)

Update History

2019-07-31	An observation data was registered.
2019-03-09	An observation data was registered.
2019-03-07	An observation data was registered.
2019-01-31	An observation data was registered.
2017-09-27	An observation data was registered.

JAMSTEC
Site Policy
Privacy Policy
Application for Data and Samples
Data Policy
What's New
Update History
Feeds

Lists
Publication List
Amount of Public Info.
Data
Map Search
Data Tree
Detailed Search

Information of the Ships
NATSUSHIMA
KAIYO
YOKOSUKA
MIRAI
KAIREI
CHIKYU
KAIMEI
SHINSEI MARU
HAKUHO MARU

Information of the Submersibles
KAIKO
SHINKAI 2000
SHINKAI 6500
DEEP TOW
HYPER-DOLPHIN
URASHIMA
YOKOSUKA DEEP TOW
6K Camera DEEP TOW
6K Sonar DEEP TOW
KM-ROV
POWER GRAB
SAMPLER (SHELL)
POWER GRAB
SAMPLER (CLOW)
BMS

Go to a Cruise Information

Cruise ID:

Go to a Dive Information

Dive ID: