

MIRAI MR17-05C PARTICULATE ORGANIC CARBON (POC)

Last Modified: 2019-09-17

[ReadMe](#) [Observation Data](#)

Cruise ID: [MR17-05C](#)

PARTICULATE ORGANIC CARBON (POC): Processed (PI)

Data Policy: [JAMSTEC](#)

Observation Items:

Science Keywords:

Data Information

POC was measured with a method consistent with the JGOFS protocols. Particles were collected on pre-combusted 25 mm GF/F filters. After filtration, the filters were transferred to clean glass scintillation vials, dried at 55 degC, and stored until post cruise analysis. The determination of POC was made with a standard CHN analysis based on high temperature combustion of sample filters. The CHN analysis was made at the UCSB MSI Analytical Lab. Before this analysis, 0.25 mL of 10% HCl was applied to each filter for the removal of inorganic carbon and the acid-treated filters were dried at 55 degC. Blank filters were also collected during the cruise to quantify background POC. The blank filters were processed in the same way as regular sample filters with the exception that the sample filtration step was not applied. The final values of POC concentration were calculated by subtracting the mass of organic carbon on blank filters from the mass of carbon determined on sample filters, and then dividing this result by the measured volume of filtered sample. Duplicate POC filters were taken for many samples and averaged to produce the final POC concentration. In addition to POC, particulate organic carbon (PON) was also determined from the CHN analysis. Both POC and PON data are included in the submitted data file.

Cruise Report

http://www.godac.jamstec.go.jp/catalog/data/doc_catalog/media/MR17-05C_all.pdf

For Using Data

Principal Investigator

Rick A. Reynolds (Scripps Institute of Oceanography)

Use Constraints

See [Terms and Conditions](#) about constrain of use.

Data Citation

Nishino, S., 2017, R/V Mirai Cruise Report MR17-05C, 209pp., JAMSTEC, Yokosuka, Japan.

Upon consultation in advance with the chief of investigation and the person(s) in charge of research issues who gathered that data, we request that the text of the results material contain a statement to the effect that it was obtained during the R/V Mirai cruise of MR17-05C, the Chief Scientist, Shigeto Nishino (JAMSTEC), and the following Principal Investigators (PIs) for gathering the data.

Chief Scientist

Shigeto Nishino

Japan Agency for Marine - Earth Science and Technology (JAMSTEC)

2-15 Natsushima, Yokosuka, Kanagawa 237-0061, Japan

Tel: +81-46-867-9487, Fax: +81-46-867-9437

E-mail: nishinos@jamstec.go.jp

PI

Toru Hirawake (Hokkaido University)

Please also mention that this cruise was supported by the Arctic Challenge for Sustainability (ArCS) Project, which was funded by the Ministry of Education, Culture, Sports, Science and Technology of Japan (MEXT), and the Global Change Observation Mission-Climate (GCOM-C) mission of Japan Aerospace Exploration Agency (JAXA).

Instrument

Instrument:

CEC 440HA Elemental Analyzer

(Exeter Analytical)

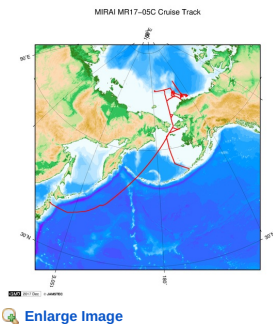
Instrument Information:



Data Format

Station times and locations are given in the file "SIO_StationLog_MR17-05C.txt".

Related Information



MR17-05C

Ship Name: MIRAI
Period: 2017-08-24 - 2017-10-01
Chief Scientist: Shigeto Nishino (JAMSTEC)
Project Name: [Arctic Ocean Climate System Reaserch]
Proposal ▶ Arctic Challenge for Sustainability (ArCS)
Title:

Update History

2019-09-17	An observation data was registerd.
------------	------------------------------------

JAMSTEC

Site Policy
Privacy Policy
Application for Data and Samples
Data Policy

What's New
Update History
Feeds

Lists

Publication List
Amount of Public Info.

Data

Map Search
Data Tree
Detailed Search

Information of the Ships

NATSUSHIMA
KAIYO
YOKOSUKA
MIRAI
KAIREI
CHIKYU
KAIMEI
SHINSEI MARU
HAKUHO MARU

Information of the Submersibles

KAIKO
SHINKAI 2000
SHINKAI 6500
DEEP TOW
HYPER-DOLPHIN
URASHIMA
YOKOSUKA DEEP TOW
6K Camera DEEP TOW
6K Sonar DEEP TOW
KM-ROV
POWER GRAB SAMPLER (SHELL)
POWER GRAB SAMPLER (CLOW)
BMS

Go to a Cruise Information

Cruise ID:

Go to a Dive Information

Dive ID:

Copyright 2011 Japan Agency for Marine-Earth Science and Technology



JAMSTEC 国立研究開発法人
海洋研究開発機構
JAPAN AGENCY FOR MARINE-EARTH SCIENCE AND TECHNOLOGY

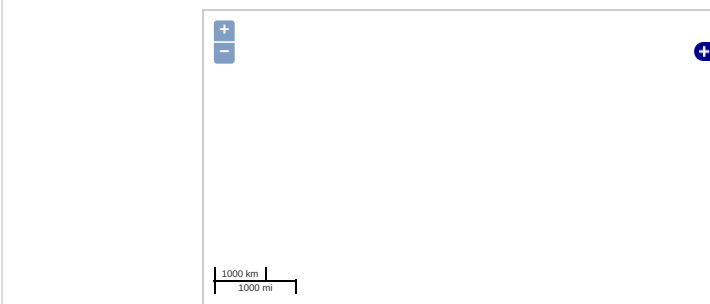
MIRAI MR17-05C PARTICULATE ORGANIC CARBON (POC)

Last Modified: 2019-09-17

[ReadMe](#) [Observation Data](#)

Cruise ID: **MR17-05C**
PARTICULATE ORGANIC CARBON (POC): Processed (PI)
Data Policy: [JAMSTEC](#)
Observation Items:
Science Keywords:

Observation Map



... Observation Line ... Navigation ... Observation, Dive Point, Hole

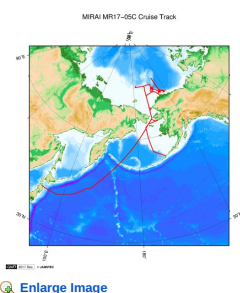
Imagery reproduced from ...

Data List

[Add to Basket](#)

- ☐ File names
- ☐ POC_SPM_MR17-05C.txt
- ☐ SIO_StationLog_MR17-05C.txt

Related Information



MR17-05C

Ship Name: MIRAI
Period: 2017-08-24 - 2017-10-01
Chief Scientist: Shigeto Nishino (JAMSTEC)
Project Name: [Arctic Ocean Climate System Research]
Proposal ▶ Arctic Challenge for Sustainability (ArCS)
Title:

[Enlarge Image](#)

Update History

2019-09-17 An observation data was registered.

JAMSTEC

[Site Policy](#)
[Privacy Policy](#)
[Application for Data and Samples](#)
[Data Policy](#)
[What's New](#)
[Update History](#)
[Feeds](#)

[Lists](#)
[Publication List](#)
[Amount of Public Info.](#)
[Data](#)
[Map Search](#)
[Data Tree](#)
[Detailed Search](#)

Information of the Ships

NATSUSHIMA
KAIYO
YOKOSUKA
MIRAI
KAIREI
CHIKYU
KAIMEI
SHINSEI MARU
HAKUHO MARU

Information of the Submersibles

KAIKO
SHINKAI 2000
SHINKAI 6500
DEEP TOW
HYPER-DOLPHIN
URASHIMA
YOKOSUKA DEEP TOW
6K Camera DEEP TOW
6K Sonar DEEP TOW
KM-ROV
POWER GRAB SAMPLER (SHELL)
POWER GRAB SAMPLER (CLOW)
BMS

Go to a Cruise Information

Cruise ID:

Go to a Dive Information

Dive ID: