

## MIRAI MR09-01 Leg1 Lowered Acoustic Doppler Current Profiler (LADCP)

Last Modified: 2018-05-12

[ReadMe](#) [Observation Data](#)

Cruise ID: [MR09-01 Leg1](#)

Lowered Acoustic Doppler Current Profiler (LADCP) : Processed (PI)

Data Policy: [JAMSTEC](#)

Observation Items: Depth, Velocity (zonal and meridional)

Science Keywords:

OCEANS > OCEAN CIRCULATION > OCEAN CURRENTS

### Cruise Report

[http://www.godac.jamstec.go.jp/catalog/data/doc\\_catalog/media/MR09-01\\_leg1-3\\_all.pdf](http://www.godac.jamstec.go.jp/catalog/data/doc_catalog/media/MR09-01_leg1-3_all.pdf)

### For Using Data

#### Principal Investigator

Shinya Kouketsu (JAMSTEC)

#### Use Constraints

See [Terms and Conditions](#) about constrain of use.

#### Data Citation

See [Terms and Conditions](#) about data citation.

### Overview

Please see the [Data book](#) for details of data.

Velocity data with LADCP

#### Folders:

lad/ Velocity profile for full depth.

bot/ Velocity profile only the range

where the bottom track data were obtained.

For the process the data, only the data within the range are used.

#### File Format:

Cruise\_Code Section\_Code Station\_Code Cast\_Code

Year/Month/Day Hour/Minutes Time\_Zone

Degree\_Latitude Minites\_Latitude [N/S] Degree\_Longitude Minites\_Longitude [E/W]

Magnetic\_Deviation

Flag: cast\_flag

z u v ev

Depth(m) U(m/s) V(m/s) Error(m/s)

```

. . . .
. . . .
. . . .
. . . .
. . . .

```

----

Cruise\_Code : cruise code

Section\_Code: section code

Station\_Code: station code

Cast\_Code: cast code

Year/Month/Day Hour/Minutes Time\_Zone: The time at the bottom of the cast.

Degree\_Latitude Minites\_Latitude [N/S]: The latitude at the bottom of the cast.

Degree\_Longitude Minites\_Longitude [E/W]: The longitude at the bottom of the cast.

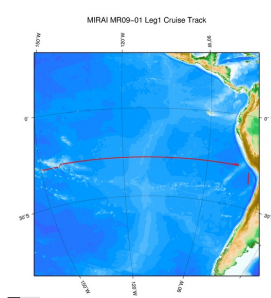
Magnetic\_Deviation: Magnetic deviation calculated using IGRF.

Flag: 0 data were processed normaly

5 data were divided into small files due to firmware bugs

6 profile included 3 beam solutions.

### Related Information



#### [MR09-01 Leg1](#)

Ship Name: MIRAI

Period: 2009-04-10 - 2009-05-19

Chief Scientist: Akihiko Murata (JAMSTEC)

Project Name: [POST-WOCE Hydrography, South Pacific Ocean Research Activity 2009]

 [Enlarge Image](#)

#### Update History

2018-05-12	An observation data was registerd.
2012-09-28	An observation data was registerd.

#### JAMSTEC

[Site Policy](#)  
[Privacy Policy](#)  
[Application for Data and Samples](#)  
[Data Policy](#)

**What's New**  
[Update History](#)  
[Feeds](#)

#### Lists

[Publication List](#)  
[Amount of Public Info.](#)

#### Data

[Map Search](#)  
[Data Tree](#)  
[Detailed Search](#)

#### Information of the Ships

[NATSUSHIMA](#)  
[KAIYO](#)  
[YOKOSUKA](#)  
[MIRAI](#)  
[KAIREI](#)  
[CHIKYU](#)  
[KAIMEI](#)  
[SHINSEI MARU](#)  
[HAKUHO MARU](#)

#### Information of the Submersibles

[KAIKO](#)  
[SHINKAI 2000](#)  
[SHINKAI 6500](#)  
[DEEP TOW](#)  
[HYPER-DOLPHIN](#)  
[URASHIMA](#)  
[YOKOSUKA DEEP TOW](#)  
[6K Camera DEEP TOW](#)  
[6K Sonar DEEP TOW](#)  
[KM-ROV](#)  
[POWER GRAB SAMPLER \(SHELL\)](#)  
[POWER GRAB SAMPLER \(CLOW\)](#)  
[BMS](#)

#### Go to a Cruise Information

Cruise ID:

#### Go to a Dive Information

Dive ID:

Copyright 2011 Japan Agency for Marine-Earth Science and Technology



**JAMSTEC**

国立研究開発法人  
海洋研究開発機構  
JAPAN AGENCY FOR MARINE EARTH SCIENCE AND TECHNOLOGY

## MIRAI MR09-01 Leg1 Lowered Acoustic Doppler Current Profiler (LADCP)

Last Modified: 2018-05-12

[ReadMe](#) [Observation Data](#)

Cruise ID: [MR09-01 Leg1](#)

Lowered Acoustic Doppler Current Profiler (LADCP) : Processed (PI)

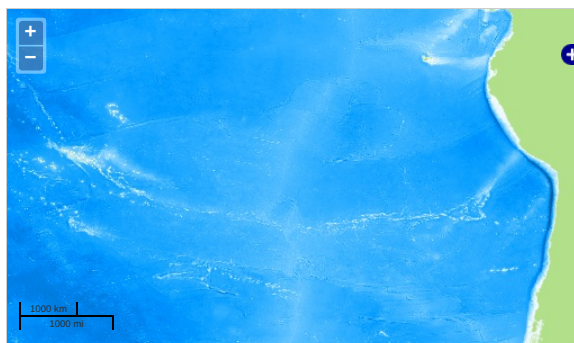
Data Policy: [JAMSTEC](#)

Observation Items: Depth, Velocity (zonal and meridional)

Science Keywords:

OCEANS > OCEAN CIRCULATION > OCEAN CURRENTS

### Observation Map



... Observation Line ... Navigation ... Observation, Dive Point, Hole

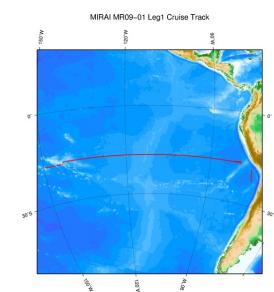
Imagery reproduced from ...

### Data List

File names

☐ MR09-01\_leg1\_ladcp.zip

### Related Information



[Enlarge Image](#)

#### MR09-01 Leg1

Ship Name: MIRAI

Period: 2009-04-10 - 2009-05-19

Chief Scientist: Akihiko Murata (JAMSTEC)

Project Name: [POST-WOCE Hydrography, South Pacific Ocean Research Activity 2009]

### Update History

2018-05-12	An observation data was registered.
2012-09-28	An observation data was registered.

#### JAMSTEC

[Site Policy](#)  
[Privacy Policy](#)  
[Application for Data and Samples](#)  
[Data Policy](#)  
  
[What's New](#)  
[Update History](#)  
[Feeds](#)

#### Lists

[Publication List](#)  
[Amount of Public Info.](#)  
  
[Data](#)  
[Map Search](#)  
[Data Tree](#)  
[Detailed Search](#)

#### Information of the Ships

[NATSUSHIMA](#)  
[KAIYO](#)  
[YOKOSUKA](#)  
[MIRAI](#)  
[KAIREI](#)  
[CHIKYU](#)  
[KAIMEI](#)  
[SHINSEI MARU](#)  
[HAKUHO MARU](#)

#### Information of the Submersibles

[KAICO](#)  
[SHINKAI 2000](#)  
[SHINKAI 6500](#)  
[DEEP TOW](#)  
[HYPER-DOLPHIN](#)  
[URASHIMA](#)  
[YOKOSUKA DEEP TOW](#)  
[6K Camera DEEP TOW](#)  
[6K Sonar DEEP TOW](#)  
[KM-ROV](#)  
[POWER GRAB SAMPLER \(SHELL\)](#)  
[POWER GRAB SAMPLER \(CLOW\)](#)  
[BMS](#)

#### Go to a Cruise Information

Cruise ID:

#### Go to a Dive Information

Dive ID: