

MIRAI MR11-03 Sediment trap data

Last Modified: 2013-05-31

[ReadMe](#) [Observation Data](#)

Cruise ID: [MR11-03](#)

Sediment trap data: Processed (PI)

Data Policy: [JAMSTEC](#)

Observation Items:

Science Keywords:

Data Information

Results of chemical analysis on sinking particles collected by Drifting sediment traps at 60, 100, 150 and 200 m of time-series stations K2 and S1.

Cruise Report

http://www.godac.jamstec.go.jp/catalog/data/doc_catalog/media/MR11-03_all.pdf

For Using Data

Principal Investigator

Makio Honda (JAMSTEC)

Use Constraints

Please contact PI (Makio Honda, hondam@jamstec.go.jp)

Data Citation

Please contact PI (Makio Honda, hondam@jamstec.go.jp)

Instrument

Instrument:

Particle collector : drifting sediment trap, chemical analysis : elemental analyzer, Inductively Coupled Plasma-Atomic Emission Spectrometry (ICP-AES)

Instrument Information:

Particle collector : drifting sediment trap (Knauer type), chemical analysis : elemental analyzer (Parkin-Elmer 2400), Inductively Coupled Plasma-Atomic Emission Spectrometry (ICP-AES): Perkin-Elmer Optima 3300DV. Detail is written elsewhere
<<http://www.godac.jamstec.go.jp/darwin/cruise/mirai/MR11-03/e>>



Sample

Sinking particle

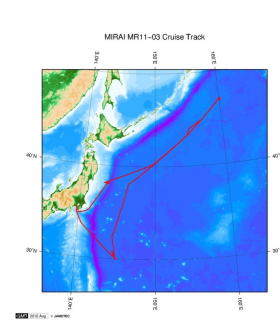
Sample ID

MR1103*P4, MR1103*P8

Data Format

Excel file

Related Information



[Enlarge Image](#)

MR11-03

Ship Name: MIRAI

Period: 2011-04-14 - 2011-05-05

Chief Scientist: Makio Honda (JAMSTEC)

Project Name: [Station K2, Station S1, Station KEO, Station KNOT]

Proposal ▶ Studies on the microbial-geochemical processes that regulate the operation of the biological pump in the subarctic and subtropical regions of the western North Pacific

Update History

2013-05-31 An observation data was registerd.

JAMSTEC
Site Policy
Privacy Policy
Application for Data and Samples
Data Policy

What's New
Update History
Feeds

Lists
Publication List
Amount of Public Info.

Data
Map Search
Data Tree
Detailed Search

Information of the Ships
NATSUSHIMA
KAIYO
YOKOSUKA
MIRAI
KAIREI
CHIKYU
KAIMEI
SHINSEI MARU
HAKUHO MARU

Information of the Submersibles
KAIKO
SHINKAI 2000
SHINKAI 6500
DEEP TOW
HYPER-DOLPHIN
URASHIMA
YOKOSUKA DEEP TOW
6K Camera DEEP TOW
6K Sonar DEEP TOW
KM-ROV
POWER GRAB SAMPLER (SHELL)
POWER GRAB SAMPLER (CLOW)
BMS

Go to a Cruise Information

Cruise ID:

Go to a Dive Information

Dive ID:

Copyright 2011 Japan Agency for Marine-Earth Science and Technology



JAMSTEC 国立研究開発法人
海洋研究開発機構
JAPAN AGENCY FOR MARINE-EARTH SCIENCE AND TECHNOLOGY

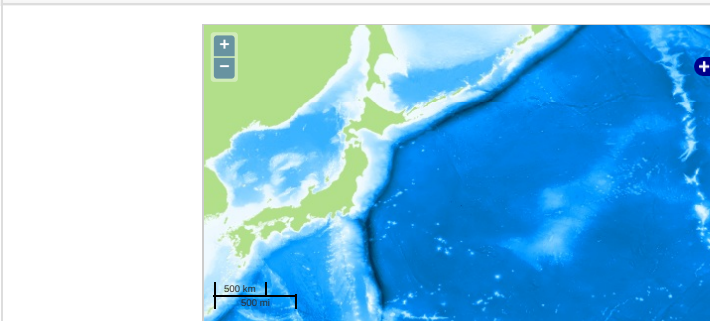
MIRAI MR11-03 Sediment trap data

Last Modified: 2013-05-31

[ReadMe](#) [Observation Data](#)

Cruise ID: **MR11-03**
Sediment trap data: Processed (PI)
Data Policy: [JAMSTEC](#)
Observation Items:
Science Keywords:

Observation Map



... Observation Line ... Navigation ... Observation, Dive Point, Hole

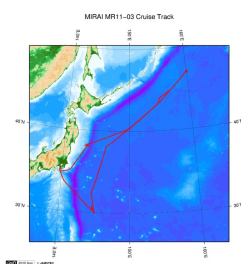
Data List

[Add to Basket](#)

File names

☐ MR11-03_dst.xls

Related Information



[Enlarge Image](#)

MR11-03

Ship Name: MIRAI
Period: 2011-04-14 - 2011-05-05
Chief Scientist: Makio Honda (JAMSTEC)
Project Name: [Station K2, Station S1, Station KEO, Station KNOT]
Proposal: Studies on the microbial-geochemical processes that regulate the operation of the biological pump in the subarctic and subtropical regions of the western North Pacific
Title:

Update History

2013-05-31 An observation data was registerd.

JAMSTEC

[Site Policy](#)
[Privacy Policy](#)
[Application for Data and Samples](#)
[Data Policy](#)
[What's New](#)
[Update History](#)
[Feeds](#)

[Lists](#)
[Publication List](#)
[Amount of Public Info.](#)
[Data](#)
[Map Search](#)
[Data Tree](#)
[Detailed Search](#)

Information of the Ships

NATSUSHIMA
KAIYO
YOKOSUKA
MIRAI
KAIREI
CHIKYU
KAIMEI
SHINSEI MARU
HAKUHO MARU

Information of the Submersibles

KAIKO
SHINKAI 2000
SHINKAI 6500
DEEP TOW
HYPER-DOLPHIN
URASHIMA
YOKOSUKA DEEP TOW
6K Camera DEEP TOW
6K Sonar DEEP TOW
KM-ROV
POWER GRAB SAMPLER (SHELL)
POWER GRAB SAMPLER (CLOW)
BMS

Go to a Cruise Information

Cruise ID:

Go to a Dive Information

Dive ID: