

## MIRAI MR14-06 Leg1 Black carbon number concentration

Last Modified: 2018-01-23

[ReadMe](#) [Observation Data](#)

Cruise ID: [MR14-06 Leg1](#)

Black carbon number concentration: Processed (PI)

Data Policy: [JAMSTEC](#)

Observation Items:

Science Keywords:

### Data Information

Black carbon measurements were continuously conducted during the cruise using a laser-induced-incandescence BC analyzer (SP2, Droplet Measurement Technologies) located in the Research Information Center, to which ambient air was drawn through ~3-m-long conductive silicon tube. Sampling air was dried by a diffusion dryer placed in front of SP2 to avoid the condensation of water inside the tubing and instrument.

### Cruise Report

[http://www.godac.jamstec.go.jp/catalog/data/doc\\_catalog/media/MR14-06\\_leg1\\_all.pdf](http://www.godac.jamstec.go.jp/catalog/data/doc_catalog/media/MR14-06_leg1_all.pdf)

### For Using Data

#### Principal Investigator

Fumikazu Taketani (Department of Environmental Geochemical Cycle Research)

#### Use Constraints

It is recommended to contact the above investigator before use for publication.

#### Data Citation

It is recommended to contact the above investigator before use for publication.

### Instrument

Instrument:

Laser induced incandescence BC analyzer (SP2, Droplet Measurement Technologies)

Instrument Information:

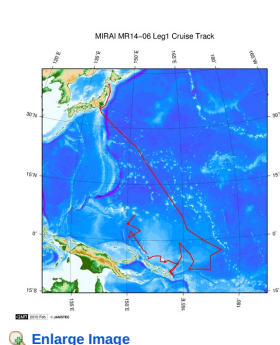
Realtime measurement of single BC-containing particle using a laser induced incandescence technique.



### Data Format

Text format. See the header of the data files for more details.

### Related Information



#### MR14-06 Leg1

Ship Name: MIRAI

Period: 2014-11-04 - 2014-12-17

Chief Scientist: Daisuke Suetsugu (JAMSTEC)

Proposal ▶ Study of structure and formation process of the Ontong Java Plateau

Title:

[Enlarge Image](#)

### Update History

2018-01-23	An observation data was registered.
2017-02-28	An observation data was registered.

### JAMSTEC

[Site Policy](#)  
[Privacy Policy](#)  
[Application for Data and Samples](#)  
[Data Policy](#)

### Lists

[Publication List](#)  
[Amount of Public Info.](#)  
  
[Data](#)  
[Map Search](#)  
[Data Tree](#)

### Information of the Ships

[NATSUSHIMA](#)  
[KAIYO](#)  
[YOKOSUKA](#)  
[MIRAI](#)  
[KAIREI](#)

### Information of the Submersibles

[KAIKO](#)  
[SHINKAI 2000](#)  
[SHINKAI 6500](#)  
[DEEP TOW](#)  
[HYPER-DOLPHIN](#)

### Go to a Cruise Information

Cruise ID:

### Go to a Dive Information

What's New  
Update History  
Feeds

Detailed Search

CHIKYU  
KAIMEI  
SHINSEI MARU  
HAKUHO MARU

URASHIMA  
YOKOSUKA DEEP TOW  
6K Camera DEEP TOW  
6K Sonar DEEP TOW  
KM-ROV  
POWER GRAB SAMPLER  
(SHELL)  
POWER GRAB SAMPLER  
(CLOW)  
BMS

Dive ID:

Copyright 2011 Japan Agency for Marine-Earth Science and Technology



**JAMSTEC** 国立研究開発法人  
海洋研究開発機構  
JAPAN AGENCY FOR MARINE-EARTH SCIENCE AND TECHNOLOGY

## MIRAI MR14-06 Leg1 Black carbon number concentration

Last Modified: 2018-01-23

[ReadMe](#) [Observation Data](#)

Cruise ID: **MR14-06 Leg1**

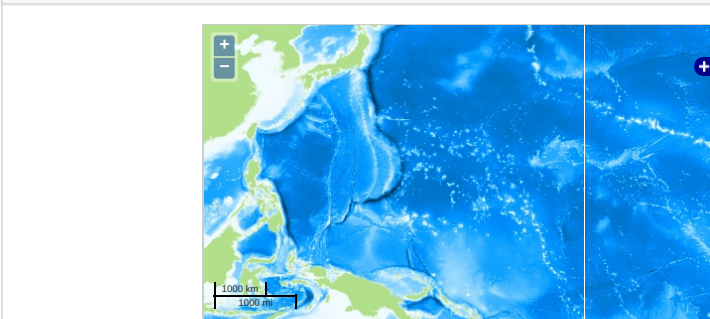
Black carbon number concentration: Processed (PI)

Data Policy: [JAMSTEC](#)

Observation Items:

Science Keywords:

### Observation Map



Imagery reproduced from ...

... Observation Line ... Navigation ... Observation, Dive Point, Hole

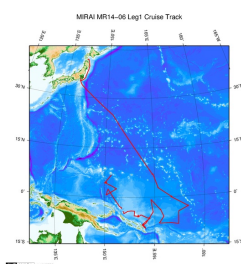
### Data List

[Add to Basket](#)

#### File names

☐ MR1406\_BC\_Conc\_12h\_average.csv

### Related Information



[Enlarge Image](#)

#### MR14-06 Leg1

Ship Name: MIRAI

Period: 2014-11-04 - 2014-12-17

Chief Scientist: Daisuke Suetsugu (JAMSTEC)

Proposal ▶ Study of structure and formation process of the Ontong Java Plateau

Title:

### Update History

2018-01-23	An observation data was registered.
2017-02-28	An observation data was registered.

#### JAMSTEC

[Site Policy](#)  
[Privacy Policy](#)  
[Application for Data and Samples](#)  
[Data Policy](#)  
[What's New](#)  
[Update History](#)  
[Feeds](#)

#### Lists

[Publication List](#)  
[Amount of Public Info.](#)  
[Data](#)  
[Map Search](#)  
[Data Tree](#)  
[Detailed Search](#)

#### Information of the Ships

NATSUSHIMA  
KAIYO  
YOKOSUKA  
MIRAI  
KAIREI  
CHIKYU  
KAIMEI  
SHINSEI MARU  
HAKUHO MARU

#### Information of the Submersibles

KAIKO  
SHINKAI 2000  
SHINKAI 6500  
DEEP TOW  
HYPER-DOLPHIN  
URASHIMA  
YOKOSUKA DEEP TOW  
6K Camera DEEP TOW  
6K Sonar DEEP TOW  
KM-ROV  
POWER GRAB SAMPLER (SHELL)  
POWER GRAB SAMPLER (CLOW)  
BMS

#### Go to a Cruise Information

Cruise ID:

#### Go to a Dive Information

Dive ID:



**JAMSTEC** 国立研究開発法人  
海洋研究開発機構  
JAPAN AGENCY FOR MARINE-EARTH SCIENCE AND TECHNOLOGY