

KAIREI KR08-10 Magnetic susceptibility / Physical properties

Last Modified: 2012-10-26

ReadMe

Cruise ID: [KR08-10](#)

Magnetic susceptibility / Physical properties : Processed (PI)

Data Policy: [JAMSTEC](#)

Observation Items:

Science Keywords:

Data Information

Physical property data include density, water content, porosity and void ratio.

Cruise Report

http://www.godac.jamstec.go.jp/catalog/data/doc_catalog/media/KR08-10_all.pdf

For Using Data

Principal Investigator

Kiichiro Kawamura (Fukada Geological Institute)

Use Constraints

None

Data Citation

None

Instrument

Instrument:

Magnetic susceptibility: Kappabridge

KLY-4 (in JAMSTEC, Kanamatsu)

Instrument Information:



Instrument:

Physical properties: Electric balance

Instrument Information:



Sample

Core Samples (Piston core, Pilot core)

Sample ID

KR08-10 PC01 ~ 06, PL01 ~ 06

Data Format

Microsoft Excel file (.xls)

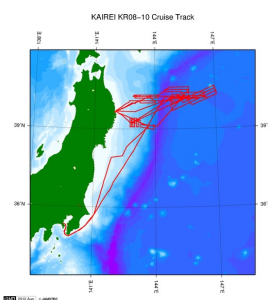
Magnetic susceptibility in volumetric unit (SI)

Links to [Core Data Site](#) about core samples.

Related Information

Cruise Data

Dive Data



[Enlarge Image](#)

KR08-10

Ship Name: KAIKEI

Period: 2008-08-18 - 2008-09-10

Chief Scientist: Makoto Yamano (The University of Tokyo)/Tadanori Goto (JAMSTEC)

Proposal Title: Studies on the thermal structure and the water distribution in the upper part of the Pacific plate subducting along the Japan Trench

Update History

2012-10-26 An observation data was registered.

JAMSTEC

[Site Policy](#)

[Privacy Policy](#)

[Application for Data and Samples](#)

[Data Policy](#)

What's New

[Update History](#)

[Feeds](#)

Lists

[Publication List](#)

[Amount of Public Info.](#)

Data

[Map Search](#)

[Data Tree](#)

[Detailed Search](#)

Information of the Ships

[NATSUSHIMA](#)

[KAIYO](#)

[YOKOSUKA](#)

[MIRAI](#)

[KAIREI](#)

[CHIKYU](#)

[KAIMEI](#)

[SHINSEI MARU](#)

[HAKUHO MARU](#)

Information of the Submersibles

[KAICO](#)

[SHINKAI 2000](#)

[SHINKAI 6500](#)

[DEEP TOW](#)

[HYPER-DOLPHIN](#)

[URASHIMA](#)

[YOKOSUKA DEEP TOW](#)

[6K Camera DEEP TOW](#)

[6K Sonar DEEP TOW](#)

Go to a Cruise Information

Cruise ID:

Go to a Dive Information

Dive ID:

KM-ROV
POWER GRAB SAMPLER
(SHELL)
POWER GRAB SAMPLER
(CLOW)
BMS

Copyright 2011 Japan Agency for Marine-Earth Science and
Technology



JAMSTEC 国立研究開発法人
海洋研究開発機構
JAPAN AGENCY FOR MARINE-EARTH SCIENCE AND TECHNOLOGY

KAIREI KR08-10 Magnetic susceptibility / Physical properties

Last Modified: 2012-10-26

ReadMe

Cruise ID: **KR08-10**

Magnetic susceptibility / Physical properties: Processed (PI)

Data Policy: [JAMSTEC](#)

Observation Items:

Science Keywords:

Data Information

Physical property data include density, water content, porosity and void ratio.

Cruise Report

http://www.godac.jamstec.go.jp/catalog/data/doc_catalog/media/KR08-10_all.pdf

For Using Data

Principal Investigator

Kiichiro Kawamura (Fukada Geological Institute)

Use Constraints

None

Data Citation

None

Instrument

Instrument:

Magnetic susceptibility: Kappabridge KLY-4 (in JAMSTEC, Kanamatsu)

Instrument Information:



Instrument:

Physical properties: Electric balance

Instrument Information:



Sample

Core Samples (Piston core, Pilot core)

Sample ID

KR08-10 PC01 ~ 06, PL01 ~ 06

Data Format

Microsoft Excel file (.xls)

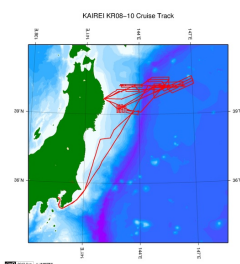
Magnetic susceptibility in volumetric unit (SI)

Links to [Core Data Site](#) about core samples.

Related Information

Cruise Data

Dive Data



[Enlarge Image](#)

KR08-10

Ship Name: KAIREI

Period: 2008-08-18 - 2008-09-10

Chief Scientist: Makoto Yamano (The University of Tokyo)/Tadanori Goto (JAMSTEC)

Proposal: Studies on the thermal structure and the water distribution in the upper part of the Pacific plate subducting along the Japan Trench

Update History

2012-10-26

An observation data was registered.

JAMSTEC

[Site Policy](#)

[Privacy Policy](#)

[Application for Data and Samples](#)

[Data Policy](#)

[What's New](#)

[Update History](#)

[Feeds](#)

Lists

[Publication List](#)

[Amount of Public Info.](#)

Data

[Map Search](#)

[Data Tree](#)

[Detailed Search](#)

Information of the Ships

[NATSUSHIMA](#)

[KAIYO](#)

[YOKOSUKA](#)

[MIRAI](#)

[KAIREI](#)

[CHIKYU](#)

[KAIMEI](#)

[SHINSEI MARU](#)

[HAKUHO MARU](#)

Information of the Submersibles

[KAIKO](#)

[SHINKAI 2000](#)

[SHINKAI 6500](#)

[DEEP TOW](#)

[HYPER-DOLPHIN](#)

[URASHIMA](#)

[YOKOSUKA DEEP TOW](#)

[6K Camera DEEP TOW](#)

[6K Sonar DEEP TOW](#)

[KM-ROV](#)

[POWER GRAB SAMPLER \(SHELL\)](#)

[POWER GRAB SAMPLER \(CLOW\)](#)

[BMS](#)

Go to a Cruise Information

Cruise ID:

Go to a Dive Information

Dive ID: