

MIRAI MR04-03 Leg2 Bottle Sampling Water Chemical Analysis

Last Modified: 2017-07-28

[ReadMe](#) [Observation Data](#) [Data Format](#) [Quality Information](#)

Cruise ID: [MR04-03 Leg2](#)

Bottle Sampling Water Chemical Analysis: Processed (DMO)-QCed

Data Policy: [JAMSTEC](#)

Observation Items: Temperature, Salinity, Dissolved oxygen, Potential temperature, Density

Science Keywords:

OCEANS > OCEAN CHEMISTRY > OXYGEN
OCEANS > OCEAN CHEMISTRY > SALINITY
OCEANS > OCEAN TEMPERATURE > WATER TEMPERATURE
OCEANS > SALINITY/DENSITY > SALINITY
OCEANS > OCEAN TEMPERATURE > POTENTIAL TEMPERATURE

Cruise Report

http://www.godac.jamstec.go.jp/catalog/data/doc_catalog/media/MR04-03_leg1-2_all.pdf

For Using Data

Principal Investigator

CTDTMP : Hideaki Hase (JAMSTEC)

CTDSAL : Hideaki Hase (JAMSTEC)

SALNTY : Hideaki Hase (JAMSTEC)

CTDOXY : Hideaki Hase (JAMSTEC)

JAMSTEC / BPPT joint cruise in the Indonesian waters.

Use Constraints

See [Terms and Conditions](#) about constrain of use.

Data Citation

See [Terms and Conditions](#) about data citation.

Instrument

Instrument:

Salinity measurement system



Information on CTD data

(1) Temperature sensor

Model : SBE3, Sea-Bird Electronics, Inc.

Measurement range : -5.0 to +35degC

Accuracy : 0.001degC

Resolution : 0.0002degC

(2) Salinity sensor

Model : SBE4, Sea-Bird Electronics, Inc.

Measurement range : 0.0 to 7S/m

Accuracy : 0.0003S/m

Resolution : 0.00004S/m

(3) Pressure sensor

Model : SBE9plus, Sea-Bird Electronics, Inc.

Measurement range : up to 10500m

Accuracy : 0.015%F.S.

Resolution : 0.001%F.S.

(4) DO sensor

Model : SBE43, Sea-Bird Electronics, Inc.

Measurement range : 0-15ml/l

Accuracy : 0.1ml/l

Resolution : 0.01ml/l

Information on Chemical and Biological data

1. Salinity

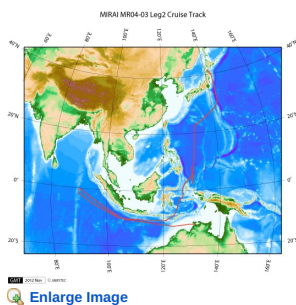
(1) Instruments: Autosol salinometer model 8400B (Guildline Instruments Ltd.)

(2) Methods : -

(3) Precision : 0.0002 PSU

(4) Reference Material/Calibration: IAPSO Standard Sea Water batch P144 (Ocean Scientific International Ltd.)

Related Information



MR04-03 Leg2

Ship Name: MIRAI

Period: 2004-07-03 - 2004-08-03

Chief Scientist: Hideaki Hase (JAMSTEC)

Project Name: [Tropical Ocean Climate Study (TOCS)]

Update History

2017-07-28	An observation data was registerd.
2016-04-07	An observation data was registerd.
2015-05-29	An observation data was registerd.
2013-08-23	An observation data was registerd.
2012-11-25	An observation data was registerd.

JAMSTEC

[Site Policy](#)
[Privacy Policy](#)
[Application for Data and Samples](#)
[Data Policy](#)
[What's New](#)
[Update History](#)
[Feeds](#)

Lists

[Publication List](#)
[Amount of Public Info.](#)
[Data](#)
[Map Search](#)
[Data Tree](#)
[Detailed Search](#)

Information of the Ships

[NATSUSHIMA](#)
[KAIYO](#)
[YOKOSUKA](#)
[MIRAI](#)
[KAIREI](#)
[CHIKYU](#)
[KAIMEI](#)
[SHINSEI MARU](#)
[HAKUHO MARU](#)

Information of the Submersibles

[KAIKO](#)
[SHINKAI 2000](#)
[SHINKAI 6500](#)
[DEEP TOW](#)
[HYPER-DOLPHIN](#)
[URASHIMA](#)
[YOKOSUKA DEEP TOW](#)
[6K Camera DEEP TOW](#)
[6K Sonar DEEP TOW](#)
[KM-ROV](#)
[POWER GRAB SAMPLER \(SHELL\)](#)
[POWER GRAB SAMPLER \(CLOW\)](#)
[BMS](#)

Go to a Cruise Information

Cruise ID:

Go to a Dive Information

Dive ID:

Copyright 2011 Japan Agency for Marine-Earth Science and Technology



JAMSTEC

国立研究開発法人
海洋研究開発機構
JAPAN AGENCY FOR MARINE-EARTH SCIENCE AND TECHNOLOGY

MIRAI MR04-03 Leg2 Bottle Sampling Water Chemical Analysis

Last Modified: 2017-07-28

[ReadMe](#) [Observation Data](#) [Data Format](#) [Quality Information](#)

Cruise ID: [MR04-03 Leg2](#)

Bottle Sampling Water Chemical Analysis: Processed (DMO)-QCed

Data Policy: [JAMSTEC](#)

Exchange Format

Provided in the Exchange Format of CCHDO (CLIVAR and Carbon Hydrographic Data Office).

Please see the following link for details of Exchange Format.

[CCHDO | CLIVAR & Carbon Hydrographic Data Office](#)

Format Information

Column No.	Column Heading Mnemonic	Units Mnemonic	Reporting Precision FORTRAN Format	Comments
1	EXPCODE		A14	Expedition code
2	SECT		A6	For WOCE data the WHP section identifier
3	STNNBR		A6	Station number
4	CASTNO		I3	Cast number
5	SAMPNO		A7	Sample number
6	BTLNBR		A7	Bottle identification number
7	BTLNBR_FLAG_W		I1	Bottle quality flag
8	DATE		I8	Cast date(UTC)
9	TIME	UTC	I4	Cast time (UTC)
10	LATITUDE	DEG	F8.3	LATITUDE
11	LONGITUDE	DEG	F9.3	LONGITUDE
12	DEPTH	M	I5	Reported depth to bottom.
13	CTDPRS	DBAR	F9.1	Pressure
14	CTDPRS_FLAG_W		I1	Quality flag for CTD data
15	CTDTMP	ITS-90	F9.4	Temperature
16	CTDTMP_FLAG_W		I1	Quality flag for CTD data
17	CTDSAL	PSS-78	F9.4	CTD Salinity sensor
18	CTDSAL_FLAG_W		I1	Quality flag for CTD data
19	SALNTY	PSS-78	F9.4	Salinity
20	SALNTY_FLAG_W		I1	Quality flags for water samples
21	CTDOXY	UMOL/KG	F9.1	CTD Oxygen sensor
22	CTDOXY_FLAG_W		I1	Quality flag for CTD data
23	THETA	DEG C	F9.4	Potential temperature
24	SIG0	KG/CUM	F9.4	Density

ODV Format

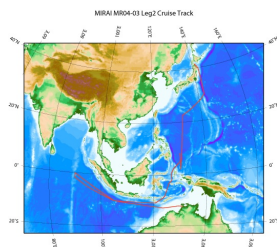
Please see the following link for details of ODV Format and ODV Software.

[Ocean Data View \(ODV\)](#)

Format Information

Column No.	Column Heading	Comments
1	Cruise	Cruise Label
2	Station	Station number_Cast number
3	Type	Station type
4	mon/day/yr	Cast date(UTC)
5	hh:mm	Cast time (UTC)
6	Latitude [degrees_north]	LATITUDE
7	Longitude [degrees_east]	LONGITUDE
8	Bot. Depth [m]	Reported depth to bottom.
9	CTDDPT[M]	Depth(Calculate from CTDPRS and LATITUDE)
10	QF	Quality flag for CTD data
11	CTDPRS[DBAR]	Pressure
12	QF	Quality flag for CTD data
13	CTDTMP[ITS-90]	Temperature
14	QF	Quality flag for CTD data
15	CTDSAL[PSS-78]	CTD Salinity sensor
16	QF	Quality flag for CTD data
17	SALNTY[PSS-78]	Salinity
18	QF	Quality flags for water samples
19	CTDOXY[UMOL/KG]	CTD Oxygen sensor
20	QF	Quality flag for CTD data
21	THETA[DEG C]	Potential temperature
22	QF	Quality flag for CTD data
23	SIG0[KG/CUM]	Density
24	QF	Quality flag for CTD data
25	SAMPNO	Sample number
26	QF	Bottle quality flag

Related Information



[Enlarge Image](#)

MR04-03 Leg2

Ship Name: MIRAI
Period: 2004-07-03 - 2004-08-03
Chief Scientist: Hideaki Hase (JAMSTEC)
Project Name: [Tropical Ocean Climate Study (TOCS)]

Update History

2017-07-28	An observation data was registered.
2016-04-07	An observation data was registered.
2015-05-29	An observation data was registered.
2013-08-23	An observation data was registered.
2012-11-25	An observation data was registered.

JAMSTEC

[Site Policy](#)
[Privacy Policy](#)
[Application for Data and Samples](#)
[Data Policy](#)

What's New

[Update History](#)
[Feeds](#)

Lists

[Publication List](#)
[Amount of Public Info.](#)

Data

[Map Search](#)
[Data Tree](#)
[Detailed Search](#)

Information of the Ships

[NATSUSHIMA](#)
[KAIYO](#)
[YOKOSUKA](#)
[MIRAI](#)
[KAIREI](#)
[CHIKYU](#)
[KAIMEI](#)
[SHINSEI MARU](#)
[HAKUHO MARU](#)

Information of the Submersibles

[KAIKO](#)
[SHINKAI 2000](#)
[SHINKAI 6500](#)
[DEEP TOW](#)
[HYPER-DOLPHIN](#)
[URASHIMA](#)
[YOKOSUKA DEEP TOW](#)
[6K Camera DEEP TOW](#)
[6K Sonar DEEP TOW](#)
[KM-ROV](#)
[POWER GRAB](#)
[SAMPLER \(SHELL\)](#)
[POWER GRAB SAMPLER \(CLOW\)](#)
[BMS](#)

Go to a Cruise Information

Cruise ID:

Go to a Dive Information

Dive ID:

MIRAI MR04-03 Leg2 Bottle Sampling Water Chemical Analysis

Last Modified: 2017-07-28

[ReadMe](#) [Observation Data](#) [Data Format](#) [Quality Information](#)

Cruise ID: [MR04-03 Leg2](#)

Bottle Sampling Water Chemical Analysis: Processed (DMO)-QCed

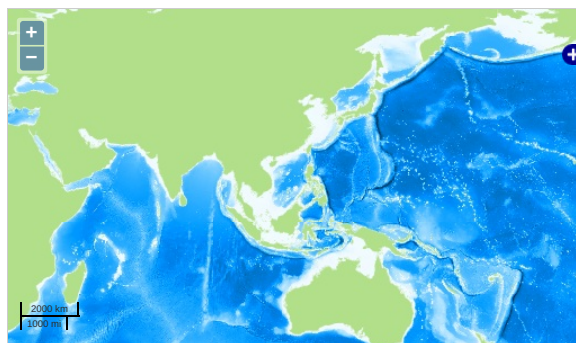
Data Policy: [JAMSTEC](#)

Observation Items: Temperature, Salinity, Dissolved oxygen, Potential temperature, Density

Science Keywords:

OCEANS > OCEAN CHEMISTRY > OXYGEN
OCEANS > OCEAN CHEMISTRY > SALINITY
OCEANS > OCEAN TEMPERATURE > WATER TEMPERATURE
OCEANS > SALINITY/DENSITY > SALINITY
OCEANS > OCEAN TEMPERATURE > POTENTIAL TEMPERATURE

Observation Map



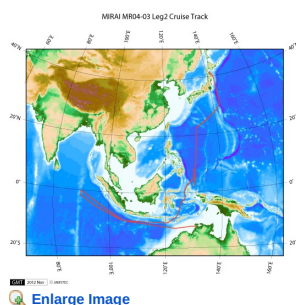
... Observation Line ... Navigation ... Observation, Dive Point, Hole

Imagery reproduced from ...

Data List

☐ File names
☐ MR040302_ex_bot.csv
☐ MR040302_odv_bot.txt

Related Information



MR04-03 Leg2

Ship Name: MIRAI
Period: 2004-07-03 - 2004-08-03
Chief Scientist: Hideaki Hase (JAMSTEC)
Project Name: [Tropical Ocean Climate Study (TOCS)]

Update History

2017-07-28	An observation data was registered.
2016-04-07	An observation data was registered.
2015-05-29	An observation data was registered.
2013-08-23	An observation data was registered.
2012-11-25	An observation data was registered.

JAMSTEC

[Site Policy](#)
[Privacy Policy](#)
[Application for Data and Samples](#)
[Data Policy](#)
[What's New](#)
[Update History](#)
[Feeds](#)

Lists

[Publication List](#)
[Amount of Public Info.](#)
[Data](#)
[Map Search](#)
[Data Tree](#)
[Detailed Search](#)

Information of the Ships

[NATSUSHIMA](#)
[KAIYO](#)
[YOKOSUKA](#)
[MIRAI](#)
[KAIREI](#)
[CHIKYU](#)
[KAIMEI](#)
[SHINSEI MARU](#)
[HAKUHO MARU](#)

Information of the Submersibles

[KAICO](#)
[SHINKAI 2000](#)
[SHINKAI 6500](#)
[DEEP TOW](#)
[HYPER-DOLPHIN](#)
[URASHIMA](#)
[YOKOSUKA DEEP TOW](#)
[6K Camera DEEP TOW](#)
[6K Sonar DEEP TOW](#)
[KM-ROV](#)
[POWER GRAB SAMPLER \(SHELL\)](#)
[POWER GRAB SAMPLER \(CLOW\)](#)
[BMS](#)

Go to a Cruise Information

Cruise ID:

Go to a Dive Information

Dive ID:

