

## MIRAI MR10-01 Leg1 Zooplankton biomass data

Last Modified: 2012-09-28

[ReadMe](#) [Observation Data](#)

Cruise ID: [MR10-01 Leg1](#)

Zooplankton biomass data: Processed (PI)

Data Policy: [JAMSTEC](#)

Observation Items:

Science Keywords:

### Data Information

Bulk biomass of zooplankton (dry mass) collected using multiple opening/closing plankton net system (IONESS) at two time-series stations, K2 and S1.

### Cruise Report

[http://www.godac.jamstec.go.jp/catalog/data/doc\\_catalog/media/MR10-01\\_leg1-2\\_all.pdf](http://www.godac.jamstec.go.jp/catalog/data/doc_catalog/media/MR10-01_leg1-2_all.pdf)

### For Using Data

#### Principal Investigator

Minoru Kitamura (JAMSTEC)

#### Use Constraints

None

#### Data Citation

None

### Instrument

Instrument:

Zooplankton samplings : IONESS

Instrument Information:

Multiple opening/closing plankton net.

See following URL;

system[http://www.seanet.co.jp/html/product/product01\\_03/product03\\_01.html](http://www.seanet.co.jp/html/product/product01_03/product03_01.html)



### Sample

Zoolankton

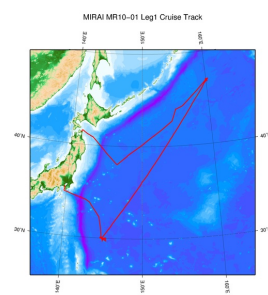
### Sample ID

I100131A, I100201A, I100204A, I100209A, I100210A, I100215A, I100216A

### Data Format

Excell file

### Related Information



[Enlarge Image](#)

### MR10-01 Leg1

Ship Name: MIRAI

Period: 2010-01-19 - 2010-02-06

Chief Scientist: Kazuhiko Matsumoto (JAMSTEC)

Project Name: [Station K2, Station S1, Station KEO, Station KNOT]

Proposal ▶ Change in material cycles and ecosystem by the climate change and its feed back Title:

### Update History

2012-09-28 An observation data was registered.

### JAMSTEC

[Site Policy](#)

[Privacy Policy](#)

[Application for Data and Samples](#)

[Data Policy](#)

### What's New

[Update History](#)

[Feeds](#)

### Lists

[Publication List](#)

[Amount of Public Info.](#)

### Data

[Map Search](#)

[Data Tree](#)

[Detailed Search](#)

### Information of the Ships

[NATSUSHIMA](#)

[KAIYO](#)

[YOKOSUKA](#)

[MIRAI](#)

[KAIREI](#)

[CHIKYU](#)

[KAIMEI](#)

[SHINSEI MARU](#)

[HAKUHO MARU](#)

### Information of the Submersibles

[KAIKO](#)

[SHINKAI 2000](#)

[SHINKAI 6500](#)

[DEEP TOW](#)

[HYPER-DOLPHIN](#)

[URASHIMA](#)

[YOKOSUKA DEEP TOW](#)

[6K Camera DEEP TOW](#)

[6K Sonar DEEP TOW](#)

[KM-ROV](#)

### Go to a Cruise Information

Cruise ID:

### Go to a Dive Information

Dive ID:

POWER GRAB SAMPLER  
(SHELL)  
POWER GRAB SAMPLER  
(CLOW)  
BMS

Copyright 2011 Japan Agency for Marine-Earth Science and  
Technology



**JAMSTEC** 国立研究開発法人  
海洋研究開発機構  
JAPAN AGENCY FOR MARINE-EARTH SCIENCE AND TECHNOLOGY

## MIRAI MR10-01 Leg1 Zooplankton biomass data

Last Modified: 2012-09-28

[ReadMe](#) [Observation Data](#)

Cruise ID: [MR10-01 Leg1](#)

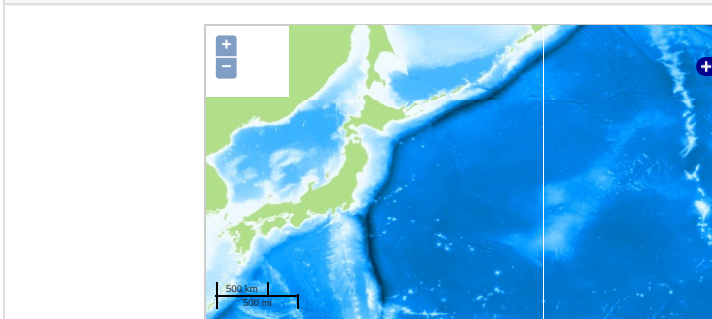
Zooplankton biomass data Processed (PI)

Data Policy: [JAMSTEC](#)

Observation Items:

Science Keywords:

### Observation Map



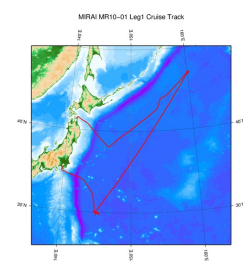
... Observation Line ... Navigation ... Observation, Dive Point, Hole

### Data List

#### File names

☐ MR10-01\_zoop.zip

### Related Information



[Enlarge Image](#)

#### MR10-01 Leg1

Ship Name: MIRAI

Period: 2010-01-19 - 2010-02-06

Chief Scientist: Kazuhiko Matsumoto (JAMSTEC)

Project Name: [Station K2, Station S1, Station KEO, Station KNOT]

Proposal ▶ Change in material cycles and ecosystem by the climate change and its feed back

Title:

### Update History

2012-09-28 An observation data was registered.

#### JAMSTEC

[Site Policy](#)

[Privacy Policy](#)

[Application for Data and Samples](#)

[Data Policy](#)

[What's New](#)

[Update History](#)

[Feeds](#)

#### Lists

[Publication List](#)

[Amount of Public Info.](#)

[Data](#)

[Map Search](#)

[Data Tree](#)

[Detailed Search](#)

#### Information of the Ships

[NATSUSHIMA](#)

[KAIYO](#)

[YOKOSUKA](#)

[MIRAI](#)

[KAIREI](#)

[CHIKYU](#)

[KAIMEI](#)

[SHINSEI MARU](#)

[HAKUHO MARU](#)

#### Information of the Submersibles

[KAIKO](#)

[SHINKAI 2000](#)

[SHINKAI 6500](#)

[DEEP TOW](#)

[HYPER-DOLPHIN](#)

[URASHIMA](#)

[YOKOSUKA DEEP TOW](#)

[6K Camera DEEP TOW](#)

[6K Sonar DEEP TOW](#)

[KM-ROV](#)

[POWER GRAB SAMPLER \(SHELL\)](#)

[POWER GRAB SAMPLER \(CLOW\)](#)

[BMS](#)

#### Go to a Cruise Information

Cruise ID:

#### Go to a Dive Information

Dive ID:

