

## KAIYO KY01-11 Leg2 Dissolved Oxygen

Last Modified: 2012-12-26

[ReadMe](#) [Observation Data](#)

Cruise ID: [KY01-11 Leg2](#)

Dissolved Oxygen: Processed (DMO)-QCed

Data Policy: [JAMSTEC](#)

Observation Items: Dissolved Oxygen

Science Keywords:

OCEANS > OCEAN CHEMISTRY > OXYGEN

Cruise Report

[http://www.godac.jamstec.go.jp/catalog/data/doc\\_catalog/media/KY01-11\\_all.pdf](http://www.godac.jamstec.go.jp/catalog/data/doc_catalog/media/KY01-11_all.pdf)

### For Using Data

Principal Investigator

Yuji Kashino (JAMSTEC)

Use Constraints

See [Terms and Conditions](#) about constrain of use.

Data Citation

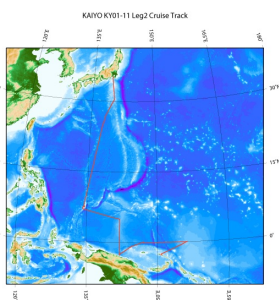
See [Terms and Conditions](#) about data citation.

### Overview

This data is the same as KY01-11 Leg1.

Please see the cruise report for details of data.

### Related Information



#### KY01-11 Leg2

Ship Name: KAIYO

Period: 2001-12-13 - 2002-01-07

Chief Scientist: Yuji Kashino (JAMSTEC)

 [Enlarge Image](#)

### Update History

2012-12-26	An observation data was registered.
------------	-------------------------------------

#### JAMSTEC

[Site Policy](#)  
[Privacy Policy](#)  
[Application for Data and Samples](#)  
[Data Policy](#)

#### What's New

[Update History](#)  
[Feeds](#)

#### Lists

[Publication List](#)  
[Amount of Public Info.](#)

#### Data

[Map Search](#)  
[Data Tree](#)  
[Detailed Search](#)

#### Information of the Ships

NATSUSHIMA  
KAIYO  
YOKOSUKA  
MIRAI  
KAIREI  
CHIKYU  
KAIMEI  
SHINSEI MARU  
HAKUHO MARU

#### Information of the Submersibles

KAIKO  
SHINKAI 2000  
SHINKAI 6500  
DEEP TOW  
HYPER-DOLPHIN  
URASHIMA  
YOKOSUKA DEEP TOW  
6K Camera DEEP TOW  
6K Sonar DEEP TOW  
KM-ROV  
POWER GRAB SAMPLER (SHELL)  
POWER GRAB SAMPLER (CLOW)  
BMS

#### Go to a Cruise Information

Cruise ID:

#### Go to a Dive Information

Dive ID:

## KAIYO KY01-11 Leg2 Dissolved Oxygen

Last Modified: 2012-12-26

[ReadMe](#) [Observation Data](#)

Cruise ID: [KY01-11 Leg2](#)

Dissolved Oxygen: Processed (DMO)-QCed

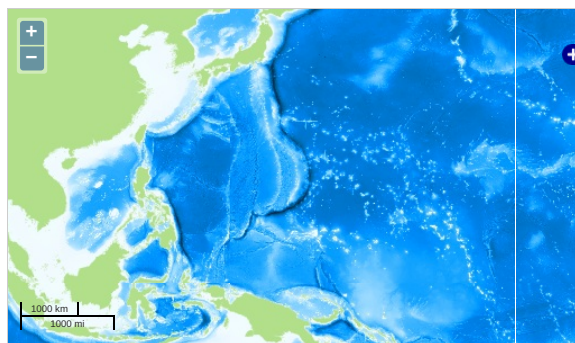
Data Policy: [JAMSTEC](#)

Observation Items: Dissolved Oxygen

Science Keywords:

OCEANS > OCEAN CHEMISTRY > OXYGEN

### Observation Map



... Observation Line ... Navigation ... Observation, Dive Point, Hole

Imagery reproduced from ...

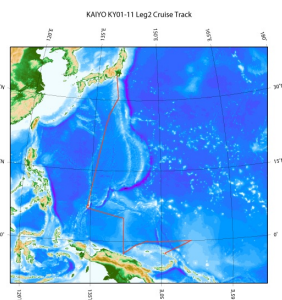
### Data List

☐ File names

☐ KY01-11\_DO.txt

☐ KY01-11\_leg2.sum

### Related Information



[Enlarge Image](#)

#### KY01-11 Leg2

Ship Name: KAIYO

Period: 2001-12-13 - 2002-01-07

Chief Scientist: Yuji Kashino (JAMSTEC)

### Update History

2012-12-26 An observation data was registered.

#### JAMSTEC

[Site Policy](#)

[Privacy Policy](#)

[Application for Data and Samples](#)

[Data Policy](#)

[What's New](#)

[Update History](#)

[Feeds](#)

#### Lists

[Publication List](#)

[Amount of Public Info.](#)

#### Data

[Map Search](#)

[Data Tree](#)

[Detailed Search](#)

#### Information of the Ships

[NATSUSHIMA](#)

[KAIYO](#)

[YOKOSUKA](#)

[MIRAI](#)

[KAIREI](#)

[CHIKYU](#)

[KAIMEI](#)

[SHINSEI MARU](#)

[HAKUHO MARU](#)

#### Information of the Submersibles

[KAIKO](#)

[SHINKAI 2000](#)

[SHINKAI 6500](#)

[DEEP TOW](#)

[HYPER-DOLPHIN](#)

[URASHIMA](#)

[YOKOSUKA DEEP TOW](#)

[6K Camera DEEP TOW](#)

[6K Sonar DEEP TOW](#)

[KM-ROV](#)

[POWER GRAB SAMPLER](#)

[\(SHELL\)](#)

[POWER GRAB SAMPLER](#)

[\(CLOW\)](#)

[BMS](#)

#### Go to a Cruise Information

Cruise ID:

#### Go to a Dive Information

Dive ID: