

KAIREI KR08-09 Shipboard Three Component Magnetometer (STCM)

Last Modified: 2019-06-19

[ReadMe](#) [Observation Data](#) [Data Format](#)

Cruise ID: [KR08-09](#)

Shipboard Three Component Magnetometer (STCM): Processed (DMO)-Corrected

Data Policy: [JAMSTEC](#)

Observation Items: X, Y and Z component of geomagnetic field anomaly, Absolute value of geomagnetic field anomaly

Science Keywords:

OCEANS > MARINE GEOPHYSICS > MARINE MAGNETICS
SOLID EARTH > GEOMAGNETISM

Cruise Report

http://www.godac.jamstec.go.jp/catalog/data/doc_catalog/media/KR08-09_all.pdf

For Using Data

Principal Investigator

Data Management Office

Use Constraints

See [Terms and Conditions](#) about constrain of use.

Data Citation

See [Terms and Conditions](#) about data citation.

Period (UTC)

2008-07-27 00:47 – 2008-08-11 23:26

Instrument

Instrument:

3 component magnetometer



Overview

The data provided is for corrected three component geomagnetic field anomalies. Three-axes flux-gate sensors with ring-cored coils were fixed on the roof of the bridge.

They measure the following items :

- h-component : along track line component, positive for the bow direction pitch.
- s-component : across track line component, positive for the starboard side roll.
- v-component : vertical component, positive for the downward direction.

The effect of ship motion was eliminated by roll and pitch data which was provided by a tilt sensor. The apparent magnetic influence can be detected through a "Figure of 8 turn"(a pair of clockwise and anti-clockwise turns) on each cruise. If no Figure of 8 turn on the cruise was completed, the latest Figure of 8 turn from the previous cruise was applied (see section 4.). As a quality control, data of low reliability was removed (see section 5. for quality control criteria).

Synthetic geomagnetic field values were calculated from IGRF models.

Measurement System

(1) Magnetometer

Manufacturer : Tierra Technica Ltd.
Type : SFG1214
Measurement range : $\pm 100,000$ nT
Accuracy : less than 100 nT
Resolution : 1 nT
Location : No.2 Laboratory (Dry laboratory)

(2) Magnetic Sensor

Manufacturer : Tierra Technica Ltd.
Form : flux-gate sensors with ring-cored coils
Location : Compass deck

(3) Attitude sensor

Manufacturer : Tierra Technica Ltd.
Type : TVM-4
Measurement range : ± 45 degree
Accuracy : ± 0.2 degree (<30 degree)
Resolution : 0.0055 degree/LSB
Location : Gravimeter Room

(4) Gyro compass

Manufacturer : Yokogawa Denshikiki Co.,Ltd.
Type : CMZ500
Follow-Up Speed : 12 degree / sec
Accuracy : ± 0.2 degree *Secant(Lat.)
Location : Bridge deck

Direction of the Figure of 8 turn

Duration of the Figure of 8 turn

In KR08-04 cruise

Date (UTC)

2008/04/28 01:23:00 - 2008/04/28 01:41:00

2008/05/09 10:47:00 - 2008/05/09 11:05:00

Data processing

The following corrections and calculations were performed.

(1) Ship magnetization correction

$$Hob = ARPYF + H_p \text{ ---(i)}$$

Hob: Observed magnetic field vector (Ship coordinates)

A: Effect of induced magnetization of the ship

R: Matrix of rotation due to the roll

P: Matrix of rotation due to the pitch

Y: Matrix of rotation due to the heading

F: Geomagnetic field vector

H_p: Ship's permanent magnetic moment

Following the equation(i), we calculate the geomagnetic field F.

$$RPYF = BHob + H_{bp} \text{ ---(ii)}$$

B: coefficient of Figure of 8 turn

H_{bp}: Permanent magnetic field vector of the ship

Reference: Isezaki,N., A new shipboard three-component magnetometer, GEOPHYSICS. VOL.51,NO10(1986);P1992-1998

(2) International Geomagnetic Reference Field (IGRF)

Synthetic geomagnetic field values are calculated from IGRF 11th Generation models by using navigation data ; latitude, longitude and date.

Reference: IAGA Division V-MOD Geomagnetic Field Modeling[<http://www.ngdc.noaa.gov/IAGA/vmod/igrf.html>]

(3) Calculation of the geomagnetic field anomaly

$$An = F - Figrf$$

An: Geomagnetic field anomaly vector

F: Geomagnetic field vector

Figrf: Synthetic geomagnetic field vector from IGRF

(4) Quality control of data

Following criteria were used for removal of data of low reliability:

- Time error (inversion of time, continuation of same timestamps)
- Summation of the difference of heading by one second exceeding 20 degree per 5 minutes
- Ground speed of the ship below 3knot or exceeding 20knot
- X, Y, or Z component of geomagnetic field anomaly exceeding ±4000nT

(5) Filtering of the geomagnetic field anomaly

Due to the residual undulation of the ship, a 120 second length Gaussian filter was applied for each component of the geomagnetic field anomaly data.

(6) Output of the data

Time (UTC)

Latitude (degree)

Longitude (degree)

X: Northward (positive on the north) component of geomagnetic field anomaly (nT)

Y: Eastward (positive on the east) component of geomagnetic field anomaly (nT)

Z: Vertical (positive for downward) component of geomagnetic field anomaly (nT)

T: Absolute value of geomagnetic field anomaly (nT)

Coefficient of the Figure of 8 turn and Permanent magnetic field vector of the ship

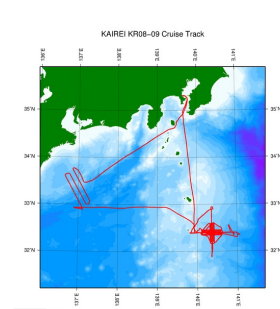
This coefficient was calculated from the Figure of 8 turn (see above)

	1.0898	0.0936	0.0041		-2789.1616
B=	-0.0890	1.2982	-0.0567	H _{bp} =	-4934.7851
	-0.0313	0.0052	0.8415		-5859.7319

Note

- (1) File naming rule: Cruise ID_corr.stcm
- (2) Sampling rate: 10 seconds
- (3) Geodetic system: WGS84
- (4) If you would like the raw data set, please contact us from "Contact Us" above.

Related Information



 [Enlarge Image](#)

KR08-09

Ship Name: KAIRES

Period: 2008-07-27 - 2008-08-11

Chief Scientist: Shuichi Kodaira (JAMSTEC)

Project Name: [Seismic study]

Proposal: Crustal growth of the Izu-Ogasawara oceanic island arc -Seismicity study for IODP Project

Title: IBM-

Update History

2019-06-19	An observation data was registerd.
2018-03-09	An observation data was registerd.
2014-09-23	An observation data was registerd.
2012-10-25	An observation data was registerd.

JAMSTEC

[Site Policy](#)
[Privacy Policy](#)
[Application for Data and Samples](#)
[Data Policy](#)

What's New

[Update History](#)
[Feeds](#)

Lists

[Publication List](#)
[Amount of Public Info.](#)

Data

[Map Search](#)
[Data Tree](#)
[Detailed Search](#)

Information of the Ships

[NATSUSHIMA](#)
[KAIYO](#)
[YOKOSUKA](#)
[MIRAI](#)
[KAIREI](#)
[CHIKYU](#)
[KAIMEI](#)
[SHINSEI MARU](#)
[HAKUHO MARU](#)

Information of the Submersibles

[KAIKO](#)
[SHINKAI 2000](#)
[SHINKAI 6500](#)
[DEEP TOW](#)
[HYPER-DOLPHIN](#)
[URASHIMA](#)
[YOKOSUKA DEEP TOW](#)
[6K Camera DEEP TOW](#)
[6K Sonar DEEP TOW](#)
[KM-ROV](#)
[POWER GRAB SAMPLER \(SHELL\)](#)
[POWER GRAB SAMPLER \(CLOW\)](#)
[BMS](#)

Go to a Cruise Information

Cruise ID:

Go to a Dive Information

Dive ID:

Copyright 2011 Japan Agency for Marine-Earth Science and Technology



JAMSTEC

国立研究開発法人
海洋研究開発機構
JAPAN AGENCY FOR MARINE-EARTH SCIENCE AND TECHNOLOGY

KAIREI KR08-09 Shipboard Three Component Magnetometer (STCM)

Last Modified: 2019-06-19

[ReadMe](#) [Observation Data](#) [Data Format](#)

Cruise ID: [KR08-09](#)

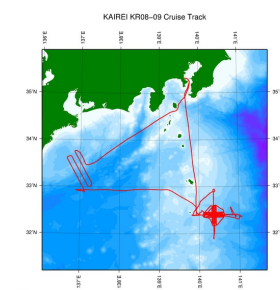
Shipboard Three Component Magnetometer (STCM): Processed (DMO)-Corrected

Data Policy: [JAMSTEC](#)

STCM Corrected

No.	Column	Content	Format	Unit	Remarks
1	1 - 8	Date	i4,i2,i2		YYYYMMDD (UTC)
2	10 -15	Time	i2,i2,i2		hhmmss (UTC)
3	17 -25	Latitude	f9.5	degree	No sign for the northern hemisphere. Negative for the southern hemisphere.
4	27 -36	Longitude	f10.5	degree	No sign for eastern hemisphere. Negative for the western hemisphere.
5	38 -43	X component of geomagnetic field anomaly	f6.0	nT	Positive on the north
6	45 -50	Y component of geomagnetic field anomaly	f6.0	nT	Positive on the east
7	52 -57	Z component of geomagnetic field anomaly	f6.0	nT	Positive for downward
8	59 -64	Absolute value of geomagnetic field anomaly	f6.0	nT	

Related Information



[Enlarge Image](#)

KR08-09

Ship Name: KAIREI

Period: 2008-07-27 - 2008-08-11

Chief Scientist: Shuichi Kodaira (JAMSTEC)

Project Name: [Seismic study]

Proposal Title: Crustal growth of the Izu-Ogasawara oceanic island arc -Seismicity study for IODP Project IBM-

Update History

2019-06-19	An observation data was registered.
2018-03-09	An observation data was registered.
2014-09-23	An observation data was registered.
2012-10-25	An observation data was registered.

JAMSTEC

[Site Policy](#)
[Privacy Policy](#)
[Application for Data and Samples](#)
[Data Policy](#)

[What's New](#)
[Update History](#)
[Feeds](#)

Lists

[Publication List](#)
[Amount of Public Info.](#)

Data
[Map Search](#)
[Data Tree](#)
[Detailed Search](#)

Information of the Ships

NATSUSHIMA
KAIYO
YOKOSUKA
MIRAI
KAIREI
CHIKYU
KAIMEI
SHINSEI MARU
HAKUHO MARU

Information of the Submersibles

KAIKO
SHINKAI 2000
SHINKAI 6500
DEEP TOW
HYPER-DOLPHIN
URASHIMA
YOKOSUKA DEEP TOW
6K Camera DEEP TOW
6K Sonar DEEP TOW
KM-ROV
POWER GRAB SAMPLER (SHELL)
POWER GRAB SAMPLER (CLOW)
BMS

Go to a Cruise Information

Cruise ID:

Go to a Dive Information

Dive ID:

KAIREI KR08-09 Shipboard Three Component Magnetometer (STCM)

Last Modified: 2019-06-19

[ReadMe](#) [Observation Data](#) [Data Format](#)

Cruise ID: **KR08-09**

Shipboard Three Component Magnetometer (STCM): Processed (DMO)-Corrected

Data Policy: **JAMSTEC**

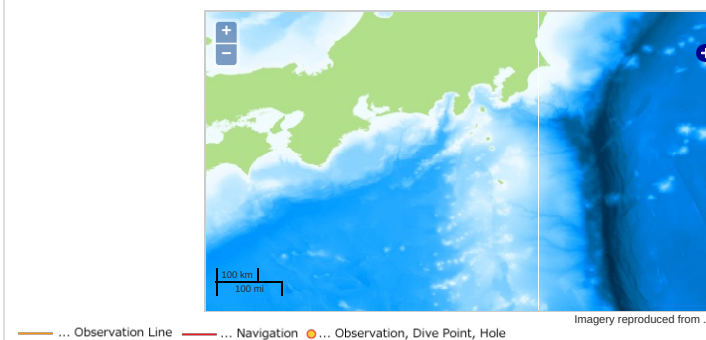
Observation Items: X, Y and Z component of geomagnetic field anomaly, Absolute value of geomagnetic field anomaly

Science Keywords:

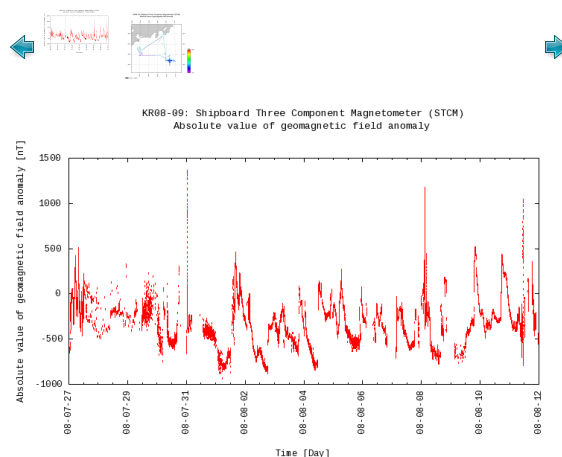
OCEANS > MARINE GEOPHYSICS > MARINE
MAGNETICS

SOLID EARTH > GEOMAGNETISM

Observation Map



Figures



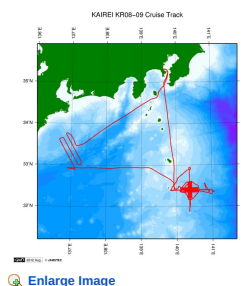
Data List

[Add to Basket](#)

File names

☐ KR08-09_corr.stcm

Related Information



[Enlarge Image](#)

KR08-09

Ship Name: KAIKEI

Period: 2008-07-27 - 2008-08-11

Chief Scientist: Shuichi Kodaira (JAMSTEC)

Project Name: [Seismic study]

Proposal: Crustal growth of the Izu-Ogasawara oceanic island arc - Seismicity study for IODP Project

Title: IBM-

Update History

2019-06-19	An observation data was registered.
2018-03-09	An observation data was registered.
2014-09-23	An observation data was registered.
2012-10-25	An observation data was registered.

[Site Policy](#)
[Privacy Policy](#)
[Application for Data and Samples](#)
[Data Policy](#)

What's New
[Update History](#)
[Feeds](#)

[Publication List](#)
[Amount of Public Info.](#)

Data
[Map Search](#)
[Data Tree](#)
[Detailed Search](#)

[NATSUSHIMA](#)
[KAIYO](#)
[YOKOSUKA](#)
[MIRAI](#)
[KAIREI](#)
[CHIKYU](#)
[KAIMEI](#)
[SHINSEI MARU](#)
[HAKUHO MARU](#)

Submersibles
[KAIKO](#)
[SHINKAI 2000](#)
[SHINKAI 6500](#)
[DEEP TOW](#)
[HYPER-DOLPHIN](#)
[URASHIMA](#)
[YOKOSUKA DEEP TOW](#)
[6K Camera DEEP TOW](#)
[6K Sonar DEEP TOW](#)
[KM-ROV](#)
[POWER GRAB SAMPLER \(SHELL\)](#)
[POWER GRAB SAMPLER \(CLOW\)](#)
[BMS](#)

Cruise ID:

Go to a Dive Information

Dive ID:

Copyright 2011 Japan Agency for Marine-Earth Science and Technology



JAMSTEC 国立研究開発法人
海洋研究開発機構
JAPAN AGENCY FOR MARINE-EARTH SCIENCE AND TECHNOLOGY