

MIRAI MR11-03 Primary Productivity data

Last Modified: 2013-05-31

[ReadMe](#) [Observation Data](#)

Cruise ID: [MR11-03](#)

Primary Productivity data: Processed (PI)

Data Policy: [JAMSTEC](#)

Observation Items:

Science Keywords:

Data Information

Primary productivity measured by ¹³C uptake rate

Cruise Report

http://www.godac.jamstec.go.jp/catalog/data/doc_catalog/media/MR11-03_all.pdf

For Using Data

Principal Investigator

Kazuhiko Matsumoto (JAMSTEC)

Use Constraints

Please contact PI (Kazuhiko Matsumoto, matsumotok@jamstec.go.jp)

Data Citation

Please contact PI (Kazuhiko Matsumoto, matsumotok@jamstec.go.jp)

Instrument

Instrument:

Incubation : in situ or simulated in situ,

Analysis : Mass Spectrometry

Instrument Information:

Incubation : in situ (Drifting system),

simulated in situ (onboard water bath),

Analysis : Mass Spectrometry (ANCA-

SL). (See MR11-03cruise report_3.1.4.

Primary production and new

production p.99 for details)



Sample

Primary Productivity

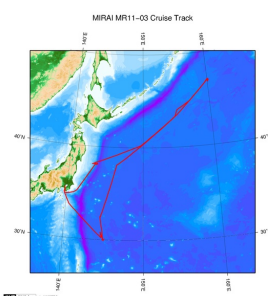
Sample ID

PP

Data Format

Excel file

Related Information



[Enlarge Image](#)

MR11-03

Ship Name: MIRAI

Period: 2011-04-14 - 2011-05-05

Chief Scientist: Makio Honda (JAMSTEC)

Project Name: [Station K2, Station S1, Station KEO, Station KNOT]

Proposal ▶ Studies on the microbial-geochemical processes that regulate the operation of the biological pump in the subarctic and subtropical regions of the western North Pacific

Update History

2013-05-31 An observation data was registered.

What's New
Update History
Feeds

Detailed Search

KAIMEI
SHINSEI MARU
HAKUHO MARU

URASHIMA
YOKOSUKA DEEP TOW
6K Camera DEEP TOW
6K Sonar DEEP TOW
KM-ROV
POWER GRAB SAMPLER
(SHELL)
POWER GRAB SAMPLER
(CLOW)
BMS

Dive ID:

Copyright 2011 Japan Agency for Marine-Earth Science and Technology



JAMSTEC
JAPAN AGENCY FOR MARINE-EARTH SCIENCE AND TECHNOLOGY

国立研究開発法人
海洋研究開発機構

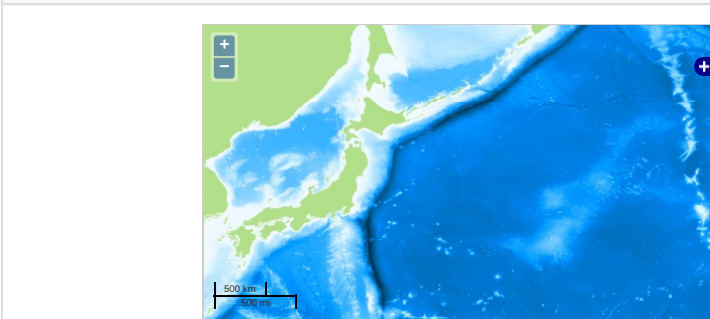
MIRAI MR11-03 Primary Productivity data

Last Modified: 2013-05-31

[ReadMe](#) [Observation Data](#)

Cruise ID: **MR11-03**
Primary Productivity data: Processed (PI)
Data Policy: [JAMSTEC](#)
Observation Items:
Science Keywords:

Observation Map



... Observation Line ... Navigation ... Observation, Dive Point, Hole

Imagery reproduced from ...

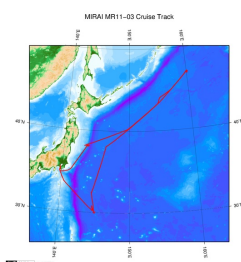
Data List

[Add to Basket](#)

File names

☐ MR11-03_PP.xlsx

Related Information



[Enlarge Image](#)

MR11-03

Ship Name: MIRAI
Period: 2011-04-14 - 2011-05-05
Chief Scientist: Makio Honda (JAMSTEC)
Project Name: [Station K2, Station S1, Station KEO, Station KNOT]
Proposal: Studies on the microbial-geochemical processes that regulate the operation of the biological pump in the subarctic and subtropical regions of the western North Pacific
Title:

Update History

2013-05-31 An observation data was registerd.

JAMSTEC

[Site Policy](#)
[Privacy Policy](#)
[Application for Data and Samples](#)
[Data Policy](#)
[What's New](#)
[Update History](#)
[Feeds](#)

[Lists](#)
[Publication List](#)
[Amount of Public Info.](#)
[Data](#)
[Map Search](#)
[Data Tree](#)
[Detailed Search](#)

Information of the Ships

NATSUSHIMA
KAIYO
YOKOSUKA
MIRAI
KAIREI
CHIKYU
KAIMEI
SHINSEI MARU
HAKUHO MARU

Information of the Submersibles

KAIKO
SHINKAI 2000
SHINKAI 6500
DEEP TOW
HYPER-DOLPHIN
URASHIMA
YOKOSUKA DEEP TOW
6K Camera DEEP TOW
6K Sonar DEEP TOW
KM-ROV
POWER GRAB SAMPLER (SHELL)
POWER GRAB SAMPLER (CLOW)
BMS

Go to a Cruise Information

Cruise ID:

Go to a Dive Information

Dive ID: