

KAIREI KR17-04 Leg1 Expendable Conductivity-Temperature-Depth Profiler (XCTD)

Last Modified: 2019-09-06

[ReadMe](#) [Observation Data](#) [Data Format](#)

Cruise ID: [KR17-04 Leg1](#)

Expendable Conductivity-Temperature-Depth Profiler (XCTD): Processed (DMO)-QCed

Data Policy: [JAMSTEC](#)

Observation Items: Depth, Temperature, Salinity

Science Keywords:

OCEANS > OCEAN TEMPERATURE > WATER TEMPERATURE

OCEANS > SALINITY/DENSITY > SALINITY

Cruise Report

http://www.godac.jamstec.go.jp/catalog/data/doc_catalog/media/KR17-04_leg1-2_all.pdf

For Using Data

Principal Investigator

Data Management Office

Use Constraints

See [Terms and Conditions](#) about constrain of use.

Data Citation

See [Terms and Conditions](#) about data citation.

Instrument

Instrument:

XBT/XCTD



Overview

Using XCTD (eXpendable Conductivity Temperature Depth profiler) system, the vertical distribution of water temperature and salinity are observed during free fall of its probe part in the seawater. Observed temperature and conductivity are transmitted to the data processor on board by the digital signal. The digital signal is converted to the temperature, conductivity and depth by data processor as binary data. Binary data is transmitted from data processor to PC. The PC calculates salinity from temperature, conductivity and depth, and those properties are recorded in PC as the ASCII files.

System

(1) Launcher

Hand launcher

Manufacturer : Sippican, Inc.

Operation area : Rear upper deck

(2) Converter

Manufacturer : Tsurumi Seiki Co., LTD.

Location : Investigation room

Sampling rate : 40 msec

(3) XCTD probe specifications

Probe Type	TSK XCTD-1	TSK XCTD-2	TSK XCTD-3	TSK XCTD-4
Temperature range [deg-C]	-2 to 35			
Temperature accuracy [deg-C]	+/- 0.02			
Temperature resolution [deg-C]	0.01			
Conductivity range [mS/cm]	0 to 60			
Conductivity accuracy [mS/cm]	+/- 0.03			
Conductivity resolution [mS/cm]	0.015			
Measurement depth [m]	1000	1850	1000	1850
Depth accuracy [m]	5 or +/- 2% of depth; whichever is larger			
Maximum elapsed time [sec]	300	600	200	502
Rated ship speed [knot]	12	3.5	20	6

Since XCTD carries no pressure sensor, we need to estimate depth from the elapsed time. The fall-rate equation is as follows.

$$Z = at + 10E^{-3} * bt^2$$

Where Z(m) is the depth and t(sec) is the elapsed time.

In addition, coefficients of the fall-rate equation are different by probe types.

Probe Type	TSK XCTD-1	TSK XCTD-2	TSK XCTD-3	TSK XCTD-4
Coefficient-a	3.42543	3.43898	5.07598	3.68081
Coefficient-b	-0.47	-0.31	-0.72	-0.47

* Coefficients listed above are supplied by Sippican, Inc., in USA.

The list of an XCTD type used in each cast is as follows.

Cast name	Probe Serial No.	Probe Type	Launcher	Converter
XCTD-201703050030	16016985	XCTD-2	Hand	MK-130
XCTD-201703080219	16016987	XCTD-2	Hand	MK-130
XCTD-201703100029	16016986	XCTD-2	Hand	MK-130
XCTD-201703120006	16016988	XCTD-2	Hand	MK-130

Data processing

(1) For sensor's stability, values of less than 1 m for temperature and less than 3 m for salinity are replaced by missing values, respectively, based on manufacturer's recommendation.

(2) Quality control

QCed data were added flag according to the NODC (National Oceanographic Data Center) quality control procedure.

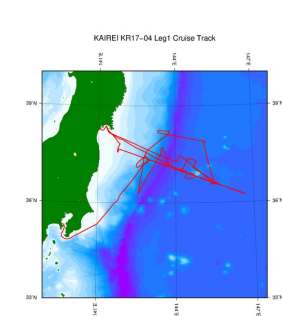
- 1) The gradient check of adjacent depth data
- 2) The density inversion check
- 3) The broad range check set up at given ocean space and depth

Please see the site of NODC of the following link for quality control procedure in detail.

[QUALITY CONTROL AND PROCESSING OF HISTORICAL OCEANOGRAPHIC TEMPERATURE, SALINITY, AND OXYGEN DATA](#)

In addition, an abnormal value is identified by a visual check, and the data after visual QC is released.

Related Information



[Enlarge Image](#)

KR17-04 Leg1

Ship Name: KAIKEI

Period: 2017-02-26 - 2017-03-16

Chief Scientist: Gou Fujie (JAMSTEC)

Proposal Marine Geological and Geophysical surveys to investigate the nature of subduction zone

Title: mega earthquakes and tsunamis 1. Seismic survey in the outer rise region

Update History

2019-09-06	An observation data was registered.
2019-03-29	An observation data was registered.

JAMSTEC

Site Policy

Privacy Policy

Application for Data and Samples

Data Policy

What's New

Update History

Feeds

Lists

Publication List

Amount of Public Info.

Data

Map Search

Data Tree

Detailed Search

Information of the Ships

NATSUSHIMA

KAIYO

YOKOSUKA

MIRAI

KAIKEI

CHIKYU

KAIKEI

SHINSEI MARU

HAKUHO MARU

Information of the Submersibles

KAIKO

SHINKAI 2000

SHINKAI 6500

DEEP TOW

HYPER-DOLPHIN

URASHIMA

YOKOSUKA DEEP TOW

6K Camera DEEP TOW

6K Sonar DEEP TOW

KM-ROV

POWER GRAB SAMPLER (SHELL)

POWER GRAB SAMPLER (CLOW)

BMS

Go to a Cruise Information

Cruise ID:

Go

Go to a Dive Information

Dive ID:

Go

Copyright 2011 Japan Agency for Marine-Earth Science and Technology

JAMSTEC
JAPAN AGENCY FOR MARINE-EARTH SCIENCE AND TECHNOLOGY

国立研究開発法人
海洋研究開発機構

KAIREI KR17-04 Leg1 Expendable Conductivity-Temperature-Depth Profiler (XCTD)

Last Modified: 2019-09-06

[ReadMe](#) [Observation Data](#) [Data Format](#)

 Cruise ID: [KR17-04 Leg1](#)

Expendable Conductivity-Temperature-Depth Profiler (XCTD): Processed (DMO)-QCed

 Data Policy: [JAMSTEC](#)

XCTD DMO

Format Description for the Corrected Data

Provided in the Exchange Format of CCHDO (CLIVAR and Carbon Hydrographic Data Office). Please see the following link for details of Exchange Format.

[CCHDO | CLIVAR & Carbon Hydrographic Data Office](#)

Data in following cruise is not expressed with Exchange Format. Please see the site of each cruise for format.

MR02-K05 Leg1

MR04-05

Format Description for the QCed Data

Each data file contains one line header (meta data) followed by data lines for each cast.

The number of data lines are recorded in the header.

Header part

No.	Column	Content	Format	Remarks
1	1	Header ID	a1	fixed as '#'
2	3 - 6	Data ID	a4	XCTD
3	8 - 22	Cruise ID	a15	
4	33 - 40	Date	i8	YYYYMMDD (UTC)
5	42 - 45	Time	i4	hhmm (UTC)
6	47 - 55	Latitude	i2,a1,f5.2,a1	dd-mm.mmN(S)
7	57 - 66	Longitude	i3,a1,f5.2,a1	ddd-mm.mmE(W)
8	68 - 71	Number of data lines	i4	
9	72 - 73	Terminator	-	CR+LF

Data part

No.	Column	Content	Unit	Format	Remarks
1	1 - 11	Depth	m	f11.1	
2	12 - 22	Temperature	deg-C	f11.2	ITS-90
3	23 - 33	Salinity	PSU	f11.3	PSS-78
4	45 - 55	Flag	-	i11	1 - 7 : space 8 : flag of depth 9 : flag of temperature 10 : flag of salinity 11 : space * reference : Definition of Quality Control Flags
5	56 - 57	Terminator	-	-	CR+LF

Each contents of the data part is stored in 11 bytes.

Missing value is presented by '-5', and error value is presented by '-9'.

Definition of Quality Control Flags

1. Depth Flags

- 0 - accepted value
- 1 - error in recorded depth (same or less than previous depth)
- 2 - density inversion

2. Observed Level Flags

- N - missing value
- 0 - accepted value
- 1 - range outlier (outside of broad range check)
- 2 - failed inversion check
- 3 - failed gradient check
- 4 - zero anomaly
- 5 - failed combined gradient and inversion checks
- 6 - failed range and inversion checks
- 7 - failed range and gradient checks
- 8 - failed range and zero anomaly checks
- 9 - failed range and combined gradient and inversion checks
- A - failed visual check

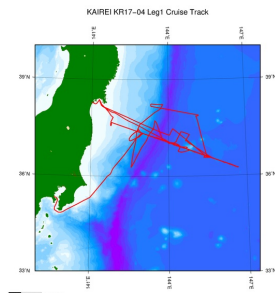
QCed data were added flag according to the NODC (National Oceanographic Data Center) quality control procedure, additionally visually checked. Please see the site of NODC of the following link for quality control procedure.

[QUALITY CONTROL AND PROCESSING OF HISTORICAL OCEANOGRAPHIC TEMPERATURE, SALINITY, AND OXYGEN DATA](#)

Sample Program

[ex_read2.f](#)

Related Information



[Enlarge Image](#)

KR17-04 Leg1

Ship Name: KAIKEI

Period: 2017-02-26 - 2017-03-16

Chief Scientist: Gou Fujie (JAMSTEC)

Proposal Marine Geological and Geophysical surveys to investigate the nature of subduction zone
Title: mega earthquakes and tsunamis 1. Seismic survey in the outer rise region

Update History

2019-09-06	An observation data was registered.
2019-03-29	An observation data was registered.

JAMSTEC

[Site Policy](#)
[Privacy Policy](#)
[Application for Data and Samples](#)
[Data Policy](#)
[What's New](#)
[Update History](#)
[Feeds](#)

Lists

[Publication List](#)
[Amount of Public Info.](#)
Data
[Map Search](#)
[Data Tree](#)
[Detailed Search](#)

Information of the Ships

[NATSUSHIMA](#)
[KAIYO](#)
[YOKOSUKA](#)
[MIRAI](#)
[KAIKEI](#)
[CHIKYU](#)
[KAIMEI](#)
[SHINSEI MARU](#)
[HAKUHO MARU](#)

Information of the Submersibles

[KAIKO](#)
[SHINKAI 2000](#)
[SHINKAI 6500](#)
[DEEP TOW](#)
[HYPER-DOLPHIN](#)
[URASHIMA](#)
[YOKOSUKA DEEP TOW](#)
[6K Camera DEEP TOW](#)
[6K Sonar DEEP TOW](#)
[KM-ROV](#)
[POWER GRAB SAMPLER \(SHELL\)](#)
[POWER GRAB SAMPLER \(CLOW\)](#)
[BMS](#)

Go to a Cruise Information

Cruise ID:

Go to a Dive Information

Dive ID:

Copyright 2011 Japan Agency for Marine-Earth Science and Technology



JAMSTEC

国立研究開発法人
海洋研究開発機構
JAPAN AGENCY FOR MARINE-EARTH SCIENCE AND TECHNOLOGY

KAIREI KR17-04 Leg1 Expendable Conductivity-Temperature-Depth Profiler (XCTD)

Last Modified: 2019-09-06

[ReadMe](#) [Observation Data](#) [Data Format](#)

Cruise ID: [KR17-04 Leg1](#)

Expendable Conductivity-Temperature-Depth Profiler (XCTD): Processed (DMO)-QCed

Data Policy: [JAMSTEC](#)

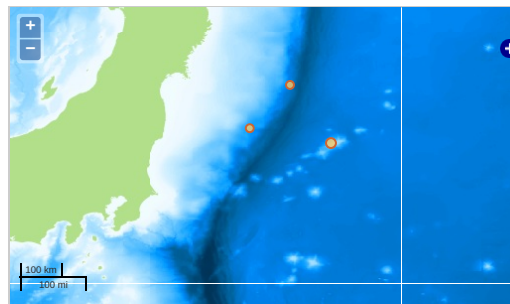
Observation Items: Depth, Temperature, Salinity

Science Keywords:

OCEANS > OCEAN > WATER
TEMPERATURE
OCEANS > SALINITY/DENSITY > SALINITY

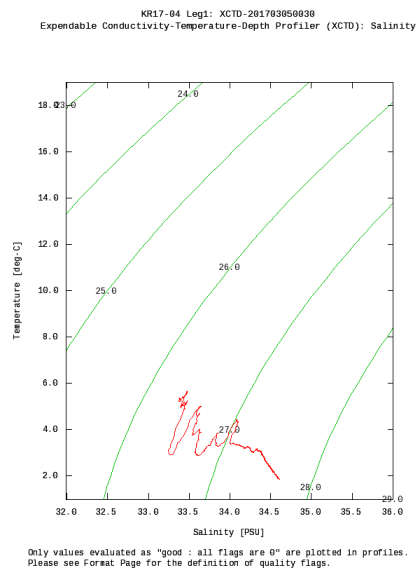
Observation Map

1. Clicking the icon displays a balloon with observation information.
2. Then click the observation name, figures will be displayed.



Figures

XCTD-201703050030



Data List

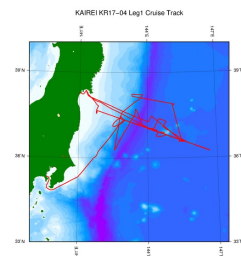
[Add to Basket](#)

File names
<input type="checkbox"/> XCTD-201703050030.dat
<input type="checkbox"/> XCTD-201703080219.dat
<input type="checkbox"/> XCTD-201703100029.dat
<input type="checkbox"/> XCTD-201703120006.dat
<input type="checkbox"/> ex_read2.f (Sample Program)

- Observation List
The list of observation is shown as follows.

Observation	Time and Date	Lat. [°]	Lon. [°]
XCTD-201703050030	2017-03-05 00:31	37.2308	142.8658
XCTD-201703080219	2017-03-08 02:20	38.1916	143.7591
XCTD-201703100029	2017-03-10 00:30	36.9008	144.6685
XCTD-201703120006	2017-03-12 00:07	36.7516	144.4988

Related Information



[Enlarge Image](#)

KR17-04 Leg1

Ship Name: KAIREI

Period: 2017-02-26 - 2017-03-16

Chief Scientist: Gou Fujie (JAMSTEC)

Proposal: Marine Geological and Geophysical surveys to investigate the nature of subduction zone
Title: mega earthquakes and tsunamis 1. Seismic survey in the outer rise region

Update History

2019-09-06	An observation data was registerd.
2019-03-29	An observation data was registerd.

JAMSTEC

[Site Policy](#)

[Privacy Policy](#)

[Application for Data and Samples](#)

[Data Policy](#)

[What's New](#)

[Update History](#)

[Feeds](#)

Lists

[Publication List](#)

[Amount of Public Info.](#)

Data

[Map Search](#)

[Data Tree](#)

[Detailed Search](#)

Information of the Ships

[NATSUSHIMA](#)

[KAIYO](#)

[YOKOSUKA](#)

[MIRAI](#)

[KAIREI](#)

[CHIKYU](#)

[KAIMEI](#)

[SHINSEI MARU](#)

[HAKUHO MARU](#)

Information of the Submersibles

[KAIKO](#)

[SHINKAI 2000](#)

[SHINKAI 6500](#)

[DEEP TOW](#)

[HYPER-DOLPHIN](#)

[URASHIMA](#)

[YOKOSUKA DEEP TOW](#)

[6K Camera DEEP TOW](#)

[6K Sonar DEEP TOW](#)

[KM-ROV](#)

[POWER GRAB SAMPLER \(SHELL\)](#)

[POWER GRAB SAMPLER \(CLOW\)](#)

[BMS](#)

Go to a Cruise Information

Cruise ID:

Go to a Dive Information

Dive ID:

Copyright 2011 Japan Agency for Marine-Earth Science and Technology



JAMSTEC 国立研究開発法人
海洋研究開発機構
JAPAN AGENCY FOR MARINE-EARTH SCIENCE AND TECHNOLOGY