

MIRAI MR09-01 Leg1 Mie-scattering lidar data

Last Modified: 2012-09-28

[ReadMe](#) [Observation Data](#)

Cruise ID: [MR09-01 Leg1](#)

Mie-scattering lidar data: Processed (PI)

Data Policy: [JAMSTEC](#)

Observation Items:

Science Keywords:

Data Information

Time-height sections of attenuated backscatter coefficients at 532/1064nm, and volume depolarization ratio at 532 nm. Attenuated backscatter coefficient is estimated using results of inversion with Fernald's method($S_1=50\text{sr}$). Definition of depolarization ratio is S/P. Resolutions are 15 min and 30 m.

Cruise Report

http://www.godac.jamstec.go.jp/catalog/data/doc_catalog/media/MR09-01_leg1-3_all.pdf

For Using Data

Principal Investigator

Nobuo Sugimoto (NIES)
Ichiro Matsui (NIES)
Atsushi Shimizu (NIES)
Tomoaki Nishizawa (NIES)

Use Constraints

Attenuated backscatter coefficients include both of backscatter from molecules and aerosols. They are attenuated by two-way transmittance between the lidar and the target air volume. There is no special treatment above clouds etc.

Data Citation

When lidar data is published, include at least one of scientists in NIES lidar team.

Instrument

Instrument:

NIES dual wavelength polarization
lidar

Instrument Information:

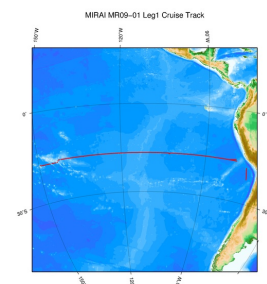
Flash lamp pumped Nd/YAG laser with
Q-switching is employed as light
source. Pulse repetition is 10 Hz.
Diameter of telescope is 20 cm with
1mrad field of view. PMT/APD are
employed for light detection and the
intensities are digitized with 12bit A/D
converters in 6m range resolution.
Data is acquired in every 10 minutes.



Data Format

netCDF(self documentation)

Related Information



 [Enlarge Image](#)

MR09-01 Leg1

Ship Name: MIRAI

Period: 2009-04-10 - 2009-05-19

Chief Scientist: Akihiko Murata (JAMSTEC)

Project Name: [POST-WOCE Hydrography, South Pacific Ocean Research Activity 2009]

Update History

2012-09-28 An observation data was registered.

Application for Data and
Samples
Data Policy

What's New
Update History
Feeds

Data
Map Search
Data Tree
Detailed Search

YOKOSUKA
MIRAI
KAIREI
CHIKYU
KAIMEI
SHINSEI MARU
HAKUHO MARU

SHINKAI 2000
SHINKAI 6500
DEEP TOW
HYPER-DOLPHIN
URASHIMA
YOKOSUKA DEEP TOW
6K Camera DEEP TOW
6K Sonar DEEP TOW
KM-ROV
POWER GRAB SAMPLER
(SHELL)
POWER GRAB SAMPLER
(CLOW)
BMS

Go to a Dive Information

Dive ID:

Copyright 2011 Japan Agency for Marine-Earth Science and
Technology



JAMSTEC 国立研究開発法人
海洋研究開発機構
JAPAN AGENCY FOR MARINE-EARTH SCIENCE AND TECHNOLOGY

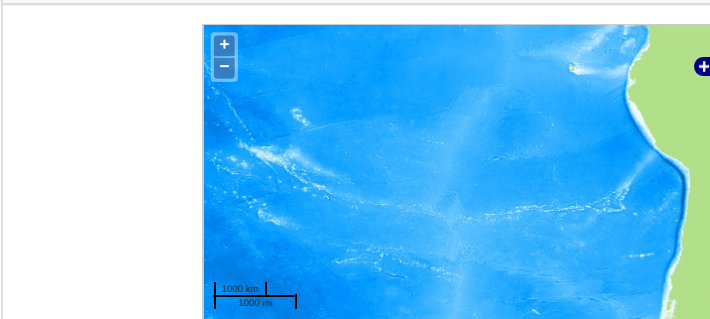
MIRAI MR09-01 Leg1 Mie-scattering lidar data

Last Modified: 2012-09-28

[ReadMe](#) [Observation Data](#)

Cruise ID: [MR09-01 Leg1](#)
Mie-scattering lidar data: Processed (PI)
Data Policy: [JAMSTEC](#)
Observation Items:
Science Keywords:

Observation Map



— ... Observation Line — ... Navigation ● ... Observation, Dive Point, Hole

Imagery reproduced from ...

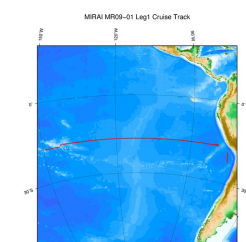
Data List

[Add to Basket](#)

File names

☐ MR09-01_leg1_lidar.ncdf

Related Information



[Enlarge Image](#)

MR09-01 Leg1

Ship Name: MIRAI
Period: 2009-04-10 - 2009-05-19
Chief Scientist: Akihiko Murata (JAMSTEC)
Project Name: [POST-WOCE Hydrography, South Pacific Ocean Research Activity 2009]

Update History

2012-09-28 An observation data was registerd.

JAMSTEC

[Site Policy](#)
[Privacy Policy](#)
[Application for Data and Samples](#)
[Data Policy](#)

[What's New](#)
[Update History](#)
[Feeds](#)

Lists

[Publication List](#)
[Amount of Public Info.](#)

[Data](#)
[Map Search](#)
[Data Tree](#)
[Detailed Search](#)

Information of the Ships

NATSUSHIMA
KAIYO
YOKOSUKA
MIRAI
KAIREI
CHIKYU
KAIMEI
SHINSEI MARU
HAKUHO MARU

Information of the Submersibles

KAIKO
SHINKAI 2000
SHINKAI 6500
DEEP TOW
HYPER-DOLPHIN
URASHIMA
YOKOSUKA DEEP TOW
6K Camera DEEP TOW
6K Sonar DEEP TOW
KM-ROV
POWER GRAB SAMPLER (SHELL)
POWER GRAB SAMPLER (CLOW)
BMS

Go to a Cruise Information

Cruise ID:

Go to a Dive Information

Dive ID:

