

## MIRAI MR98-01 Underway Thermosalinograph

Last Modified: 2018-04-30

[ReadMe](#) [Observation Data](#) [Data Format](#)

Cruise ID: [MR98-01](#)

Underway Thermosalinograph: Processed (DMO)-QCed

Data Policy: [JAMSTEC](#)

Observation Items: Temperature, Salinity, Dissolved oxygen

Science Keywords:

OCEANS > OCEAN CHEMISTRY > OXYGEN  
OCEANS > SALINITY/DENSITY > SALINITY  
OCEANS > OCEAN > SEA SURFACE TEMPERATURE  
OCEANS TEMPERATURE TEMPERATURE

### For Using Data

#### Principal Investigator

Data Management Office

#### Use Constraints

See [Terms and Conditions](#) about constrain of use.

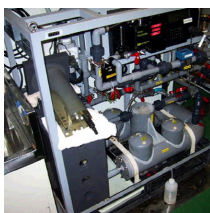
#### Data Citation

See [Terms and Conditions](#) about data citation.

### Instrument

Instrument:

Continuous sea surface water monitoring system ( - MR10-03 Leg2)



### Overview

Thermosalinograph measures the following surface parameters continuously.

- temperature
- salinity
- dissolved oxygen

Sea surface water is continuously pumped up at 4.5 meters depth to the sea surface monitoring laboratory and then flowed into each analysis equipment through a steel pipe and a vinyl-chloride pipe.

The flow rate of this system is controlled by some valves. Data are recorded in the personal computer.

### Number of significant figures of data

The accuracy of the sensors are as following.

Data	Raw / On this web site
Temperature	0.0001 [deg-C]
Salinity	0.0001 [PSU]
Dissolved oxygen	0.0001 [mg/l]

### Data processing

(1) Quality control

QCed data were added flag according to the NODC (National Oceanographic Data Center) quality control procedure.

1) The gradient check of adjacent depth data

Please see the site of NODC of the following link for quality control procedure in detail.

[QUALITY CONTROL AND PROCESSING OF HISTORICAL OCEANOGRAPHIC TEMPERATURE, SALINITY, AND OXYGEN DATA](#)

In addition, an abnormal value is identified by a visual check, and the data after visual QC is released.

### Related Information



[MR98-01](#)  
Ship Name: MIRAI  
Period: 1998-01-24 - 1998-02-26

### Update History

2018-04-30 An observation data was registerd.

What's New  
Update History  
Feeds

Detailed Search

CHIKYU  
KAIMEI  
SHINSEI MARU  
HAKUHO MARU

URASHIMA  
YOKOSUKA DEEP TOW  
6K Camera DEEP TOW  
6K Sonar DEEP TOW  
KM-ROV  
POWER GRAB  
SAMPLER (SHELL)  
POWER GRAB  
SAMPLER (CLOW)  
BMS

Dive ID:

Copyright 2011 Japan Agency for Marine-Earth Science and Technology



**JAMSTEC** 国立研究開発法人  
海洋研究開発機構  
JAPAN AGENCY FOR MARINE-EARTH SCIENCE AND TECHNOLOGY

## MIRAI MR98-01 Underway Thermosalinograph

Last Modified: 2018-04-30

[ReadMe](#)   [Observation Data](#)   [Data Format](#)

 Cruise ID: [MR98-01](#)

Underway Thermosalinograph: Processed (DMO)-QCed

 Data Policy: [JAMSTEC](#)

### TSG DMO (MR98-K01 - MR10-03)

#### Format Description for the Corrected Data

Please see the site of each cruise.

#### Format Description for the QCed Data (MR98-K01 - MR10-03)

Each data file contains one line header (meta data) followed by data lines for one day.

The number of data lines are recorded in the header.

Header part

No.	Column	Content	Format	Remarks
1	1	Header ID	a1	fixed as '#'
2	3 - 6	Data ID	a4	TSG
3	8 - 22	Cruise ID	a15	MYYY-(K)XX(_legx)
4	68 - 71	Number of data lines	i4	
5	72 - 73	Terminator	-	CR+LF

Data part

No.	Column	Content	Unit	Format	Remarks
1	1 - 8	Date	-	i8	YYYYMMDD (UTC)
2	10 - 13	Time	-	i4	hhmm (UTC)
3	15 - 23	Latitude	-	i2,a1,f5.2,a1	dd-mm.mmN(S)
4	25 - 34	Longitude	-	i3,a1,f5.2,a1	ddd-mm.mmE(W)
5	35 - 45	Temperature	deg-C	f11.4	ITS-90
6	46 - 56	Salinity	PSU	f11.4	PSS-78
7	57 - 67	Dissolved oxygen	mg/l	f11.4	
8	68 - 78	Flag	-	i11	1 - 6 : space 7 : flag of date/time 8 : flag of latitude/longitude 9 : flag of temperature 10 : flag of salinity 11 : flag of dissolved oxygen * reference : <a href="#">Definition of Quality Control Flags</a>
9	79 - 80	Terminator	-	-	CR+LF

#### Definition of Quality Control Flags

##### 1. Depth Flags

- 0 - accepted value
- 1 - error in recorded depth ( same or less than previous depth )
- 2 - density inversion

##### 2. Observed Level Flags

- N - missing value
- 0 - accepted value
- 1 - range outlier ( outside of broad range check )
- 2 - failed inversion check
- 3 - failed gradient check
- 4 - zero anomaly
- 5 - failed combined gradient and inversion checks
- 6 - failed range and inversion checks
- 7 - failed range and gradient checks
- 8 - failed range and zero anomaly checks
- 9 - failed range and combined gradient and inversion checks
- A - failed visual check

\* The check only about range check for Thermosalinograph data.

##### 3. Date and time flag (Thermosalinograph only)

- 0 - accepted data and time
- 1 - failed duplicate/missing/incorrect date and time

##### 4. Position flag (Thermosalinograph only)

- 0 - accepted position
- 1 - failed estimated ship speed check including missing/incorrect position

QCed data were added flag according to the NODC (National Oceanographic Data Center) quality control procedure, additionally visually checked. Please see the site of NODC of the following link for quality control procedure.

[QUALITY CONTROL AND PROCESSING OF HISTORICAL OCEANOGRAPHIC TEMPERATURE, SALINITY, AND OXYGEN DATA](#)

#### Sample Program

[ex\\_read.f](#)

#### Related Information

NO IMAGE

MR98-01

Ship Name: MIRAI

Period: 1998-01-24 - 1998-02-26

#### Update History

2018-04-30	An observation data was registerd.
------------	------------------------------------

#### JAMSTEC

[Site Policy](#)  
[Privacy Policy](#)  
[Application for Data and Samples](#)  
[Data Policy](#)

#### What's New

[Update History](#)  
[Feeds](#)

#### Lists

[Publication List](#)  
[Amount of Public Info.](#)

#### Data

[Map Search](#)  
[Data Tree](#)  
[Detailed Search](#)

#### Information of the Ships

[NATSUSHIMA](#)  
[KAIYO](#)  
[YOKOSUKA](#)  
[MIRAI](#)  
[KAIREI](#)  
[CHIKYU](#)  
[KAIMEI](#)  
[SHINSEI MARU](#)  
[HAKUHO MARU](#)

#### Information of the Submersibles

[KAIKO](#)  
[SHINKAI 2000](#)  
[SHINKAI 6500](#)  
[DEEP TOW](#)  
[HYPER-DOLPHIN](#)  
[URASHIMA](#)  
[YOKOSUKA DEEP TOW](#)  
[6K Camera DEEP TOW](#)  
[6K Sonar DEEP TOW](#)  
[KM-ROV](#)  
[POWER GRAB SAMPLER \(SHELL\)](#)  
[POWER GRAB SAMPLER \(CLOW\)](#)  
[BMS](#)

#### Go to a Cruise Information

Cruise ID:

#### Go to a Dive Information

Dive ID:

Copyright 2011 Japan Agency for Marine-Earth Science and Technology



**JAMSTEC**

国立研究開発法人  
海洋研究開発機構  
JAPAN AGENCY FOR MARINE-EARTH SCIENCE AND TECHNOLOGY

## MIRAI MR98-01 Underway Thermosalinograph

Last Modified: 2018-04-30

[ReadMe](#) [Observation Data](#) [Data Format](#)

Cruise ID: **MR98-01**

Underway Thermosalinograph: Processed (DMO)-QCed

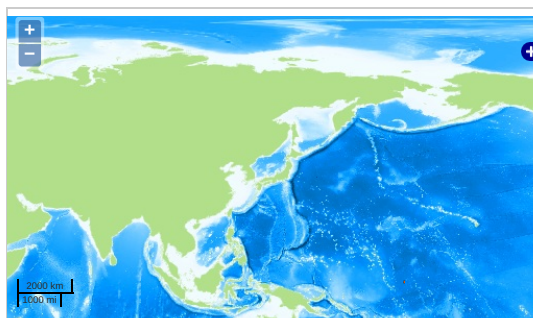
Data Policy: [JAMSTEC](#)

Observation Items: Temperature, Salinity, Dissolved oxygen

Science Keywords:

OCEANS > OCEAN CHEMISTRY > OXYGEN  
OCEANS > SALINITY/DENSITY > SALINITY  
> OCEAN > SEA SURFACE  
OCEANS TEMPERATURE TEMPERATURE

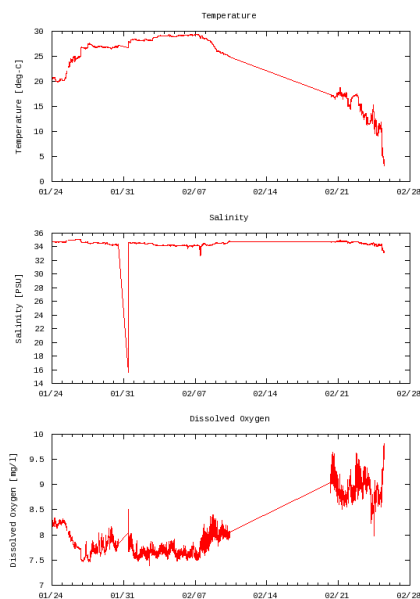
### Observation Map



— ... Observation Line — ... Navigation ● ... Observation, Dive Point, Hole

### Figures

MR98-01: Underway Thermosalino Graph



### Data List

[Add to Basket](#)

☐ File names

☐ 19980124.dat

☐ 19980125.dat

☐ 19980126.dat

☐ 19980127.dat

☐ 19980128.dat

☐ 19980129.dat

☐ 19980130.dat

☐ 19980131.dat

☐ 19980201.dat

☐ 19980202.dat

☐ 19980203.dat

☐ 19980204.dat

☐ 19980205.dat

☐ 19980206.dat

☐ 19980207.dat

☐ 19980208.dat

☐ 19980209.dat

<input type="checkbox"/>	File names
<input type="checkbox"/>	19980210.dat
<input type="checkbox"/>	19980220.dat
<input type="checkbox"/>	19980221.dat
<input type="checkbox"/>	19980222.dat
<input type="checkbox"/>	19980223.dat
<input type="checkbox"/>	19980224.dat
<input type="checkbox"/>	19980225.dat
<input type="checkbox"/>	ex_read.f (Sample Program)

#### Related Information



**MR98-01**  
 Ship Name: MIRAI  
 Period: 1998-01-24 - 1998-02-26

#### Update History

2018-04-30	An observation data was registered.
------------	-------------------------------------

#### JAMSTEC

Site Policy  
 Privacy Policy  
 Application for Data and Samples  
 Data Policy  
**What's New**  
 Update History  
 Feeds

#### Lists

Publication List  
 Amount of Public Info.  
**Data**  
 Map Search  
 Data Tree  
 Detailed Search

#### Information of the Ships

NATSUSHIMA  
 KAIYO  
 YOKOSUKA  
 MIRAI  
 KAIREI  
 CHIKYU  
 KAIMEI  
 SHINSEI MARU  
 HAKUHO MARU

#### Information of the Submersibles

KAIKO  
 SHINKAI 2000  
 SHINKAI 6500  
 DEEP TOW  
 HYPER-DOLPHIN  
 URASHIMA  
 YOKOSUKA DEEP TOW  
 6K Camera DEEP TOW  
 6K Sonar DEEP TOW  
 KM-ROV  
 POWER GRAB  
 SAMPLER (SHELL)  
 POWER GRAB  
 SAMPLER (CLOW)  
 BMS

#### Go to a Cruise Information

Cruise ID:

#### Go to a Dive Information

Dive ID:

Copyright 2011 Japan Agency for Marine-Earth Science and Technology



**JAMSTEC**

国立研究開発法人  
 海洋研究開発機構  
 JAPAN AGENCY FOR MARINE-EARTH SCIENCE AND TECHNOLOGY