

KAIREI KR17-04 Leg1 Gravity

Last Modified: 2019-07-05

ReadMe

Cruise ID: [KR17-04 Leg1](#)

Gravity: Raw

Data Policy: [JAMSTEC](#)

Observation Items: Absolute gravity

Science Keywords:

OCEANS > MARINE GEOPHYSICS > MARINE GRAVITY FIELD
SOLID EARTH > GEODETICS/GRAVITY > GRAVITY

Cruise Report

http://www.godac.jamstec.go.jp/catalog/data/doc_catalog/media/KR17-04_leg1-2_all.pdf

For Using Data

Principal Investigator

Data Management Office

Use Constraints

See [Terms and Conditions](#) about constrain of use.

Data Citation

See [Terms and Conditions](#) about data citation.

Instrument

Instrument:

Shipboard gravimeter (KR16-E03 -)



Instrument:

Microgravimeter (KR08-02 -)



Measurement System

(1) Shipboard gravity meter

The system consists of two main assemblies; the gyro-stabilized platform including the gravity sensor and the data handling & control system.

Manufacturer : Micro-g LaCoste, Inc.

Model : MGS-6

Measuring range : 500,000 mGal

Accuracy : 0.6 mGal

Drift rate : < 3.0 mGal/month

Installation : Gravity meter room

Reference: "MGS-6 Marine Gravity System 6 User's Manual", Micro-g LaCoste 2015

(2) Portable gravity meter

The portable gravity meter consists of two modules; the data acquisition/control module and the gravity sensor module. The gravity sensor is enclosed in a thermostatically controlled vacuum chamber. The portable gravity meter is used to calculate the absolute gravity of the port with reference to the gravity station of the Japan Gravity Standardization Net of the Geographical Survey Institute of Japan.

Manufacturer : SCINTREX

Model : CG-5

Measurement range : 8,000 mGal

Standard deviation : 0.005 mGal

Drift rate : < 0.02 mGal/day

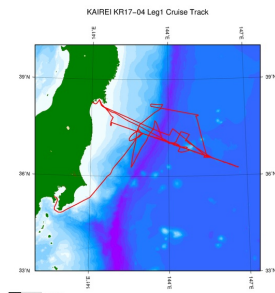
Reference: "CG-5 OPERATION MANUAL", SCINTREX

About this data

We have no plan to process the data due to equipment adjustment.

Please refer to the "Contact Us" if you wish to use the raw data.

Related Information



[Enlarge Image](#)

KR17-04 Leg1

Ship Name: KAIKEI

Period: 2017-02-26 - 2017-03-16

Chief Scientist: Gou Fujie (JAMSTEC)

Proposal Marine Geological and Geophysical surveys to investigate the nature of subduction zone
Title: mega earthquakes and tsunamis 1. Seismic survey in the outer rise region

Update History

| | |
|------------|-------------------------------------|
| 2019-07-05 | An observation data was registered. |
| 2019-05-31 | An observation data was registered. |

JAMSTEC

[Site Policy](#)
[Privacy Policy](#)
[Application for Data and Samples](#)
[Data Policy](#)
[What's New](#)
[Update History](#)
[Feeds](#)

Lists

[Publication List](#)
[Amount of Public Info.](#)
Data
[Map Search](#)
[Data Tree](#)
[Detailed Search](#)

Information of the Ships

[NATSUSHIMA](#)
[KAIYO](#)
[YOKOSUKA](#)
[MIRAI](#)
[KAIKEI](#)
[CHIKYU](#)
[KAIKEI](#)
[SHINSEI MARU](#)
[HAKUHO MARU](#)

Information of the Submersibles

[KAIKO](#)
[SHINKAI 2000](#)
[SHINKAI 6500](#)
[DEEP TOW](#)
[HYPER-DOLPHIN](#)
[URASHIMA](#)
[YOKOSUKA DEEP TOW](#)
[6K Camera DEEP TOW](#)
[6K Sonar DEEP TOW](#)
[KM-ROV](#)
[POWER GRAB SAMPLER \(SHELL\)](#)
[POWER GRAB SAMPLER \(CLOW\)](#)
[BMS](#)

Go to a Cruise Information

Cruise ID:

Go to a Dive Information

Dive ID:

Copyright 2011 Japan Agency for Marine-Earth Science and Technology



JAMSTEC

国立研究開発法人
海洋研究開発機構
JAPAN AGENCY FOR MARINE-EARTH SCIENCE AND TECHNOLOGY

KAIREI KR17-04 Leg1 Gravity

Last Modified: 2019-07-05

ReadMe

Cruise ID: [KR17-04 Leg1](#)

Gravity: Raw

Data Policy: [JAMSTEC](#)

Observation Items: Absolute gravity

Science Keywords:

OCEANS > MARINE GEOPHYSICS > MARINE GRAVITY FIELD
SOLID EARTH > GEODETICS/GRAVITY > GRAVITY

Cruise Report

http://www.godac.jamstec.go.jp/catalog/data/doc_catalog/media/KR17-04_leg1-2_all.pdf

For Using Data

Principal Investigator

Data Management Office

Use Constraints

See [Terms and Conditions](#) about constrain of use.

Data Citation

See [Terms and Conditions](#) about data citation.

Instrument

Instrument:

Shipboard gravimeter (KR16-E03 -)



Instrument:

Microgravimeter (KR08-02 -)



Measurement System

(1) Shipboard gravity meter

The system consists of two main assemblies; the gyro-stabilized platform including the gravity sensor and the data handling & control system.

Manufacturer : Micro-g LaCoste, Inc.

Model : MGS-6

Measuring range : 500,000 mGal

Accuracy : 0.6 mGal

Drift rate : < 3.0 mGal/month

Installation : Gravity meter room

Reference: "MGS-6 Marine Gravity System 6 User's Manual", Micro-g LaCoste 2015

(2) Portable gravity meter

The portable gravity meter consists of two modules; the data acquisition/control module and the gravity sensor module. The gravity sensor is enclosed in a thermostatically controlled vacuum chamber. The portable gravity meter is used to calculate the absolute gravity of the port with reference to the gravity station of the Japan Gravity Standardization Net of the Geographical Survey Institute of Japan.

Manufacturer : SCINTREX

Model : CG-5

Measurement range : 8,000 mGal

Standard deviation : 0.005 mGal

Drift rate : < 0.02 mGal/day

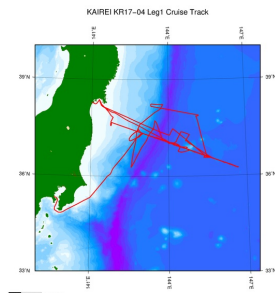
Reference: "CG-5 OPERATION MANUAL", SCINTREX

About this data

We have no plan to process the data due to equipment adjustment.

Please refer to the "Contact Us" if you wish to use the raw data.

Related Information



[Enlarge Image](#)

KR17-04 Leg1

Ship Name: KAIKEI

Period: 2017-02-26 - 2017-03-16

Chief Scientist: Gou Fujie (JAMSTEC)

Proposal Marine Geological and Geophysical surveys to investigate the nature of subduction zone
Title: mega earthquakes and tsunamis 1. Seismic survey in the outer rise region

Update History

| | |
|------------|-------------------------------------|
| 2019-07-05 | An observation data was registered. |
| 2019-05-31 | An observation data was registered. |

JAMSTEC

[Site Policy](#)
[Privacy Policy](#)
[Application for Data and Samples](#)
[Data Policy](#)

[What's New](#)
[Update History](#)
[Feeds](#)

Lists

[Publication List](#)
[Amount of Public Info.](#)

Data

[Map Search](#)
[Data Tree](#)
[Detailed Search](#)

Information of the Ships

NATSUSHIMA
KAIYO
YOKOSUKA
MIRAI
KAIKEI
CHIKYU
KAIKEI
SHINSEI MARU
HAKUHO MARU

Information of the Submersibles

KAIKO
SHINKAI 2000
SHINKAI 6500
DEEP TOW
HYPER-DOLPHIN
URASHIMA
YOKOSUKA DEEP TOW
6K Camera DEEP TOW
6K Sonar DEEP TOW
KM-ROV
POWER GRAB SAMPLER (SHELL)
POWER GRAB SAMPLER (CLOW)
BMS

Go to a Cruise Information

Cruise ID:

Go to a Dive Information

Dive ID:

Copyright 2011 Japan Agency for Marine-Earth Science and Technology



JAMSTEC 国立研究開発法人
海洋研究開発機構
JAPAN AGENCY FOR MARINE-EARTH SCIENCE AND TECHNOLOGY

KAIREI KR17-04 Leg1 Gravity

Last Modified: 2019-07-05

ReadMe

Cruise ID: **KR17-04 Leg1**

Gravity: Raw

Data Policy: **JAMSTEC**

Observation Items: Absolute gravity

Science Keywords:

OCEANS > MARINE GEOPHYSICS > MARINE GRAVITY FIELD
SOLID EARTH > GEODETICS/GRAVITY > GRAVITY

Cruise Report

http://www.godac.jamstec.go.jp/catalog/data/doc_catalog/media/KR17-04_leg1-2_all.pdf

For Using Data

Principal Investigator

Data Management Office

Use Constraints

See [Terms and Conditions](#) about constrain of use.

Data Citation

See [Terms and Conditions](#) about data citation.

Instrument

Instrument:

Shipboard gravimeter (KR16-E03 -)



Instrument:

Microgravimeter (KR08-02 -)



Measurement System

(1) Shipboard gravity meter

The system consists of two main assemblies; the gyro-stabilized platform including the gravity sensor and the data handling & control system.

Manufacturer : Micro-g LaCoste, Inc.

Model : MGS-6

Measuring range : 500,000 mGal

Accuracy : 0.6 mGal

Drift rate : < 3.0 mGal/month

Installation : Gravity meter room

Reference: "MGS-6 Marine Gravity System 6 User's Manual", Micro-g LaCoste 2015

(2) Portable gravity meter

The portable gravity meter consists of two modules; the data acquisition/control module and the gravity sensor module. The gravity sensor is enclosed in a thermostatically controlled vacuum chamber. The portable gravity meter is used to calculate the absolute gravity of the port with reference to the gravity station of the Japan Gravity Standardization Net of the Geographical Survey Institute of Japan.

Manufacturer : SCINTREX

Model : CG-5

Measurement range : 8,000 mGal

Standard deviation : 0.005 mGal

Drift rate : < 0.02 mGal/day

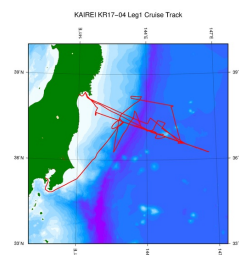
Reference: "CG-5 OPERATION MANUAL", SCINTREX

About this data

We have no plan to process the data due to equipment adjustment.

Please refer to the "Contact Us" if you wish to use the raw data.

Related Information



[Enlarge Image](#)

KR17-04 Leg1

Ship Name: KAIKEI

Period: 2017-02-26 - 2017-03-16

Chief Scientist: Gou Fujie (JAMSTEC)

Proposal Marine Geological and Geophysical surveys to investigate the nature of subduction zone

Title: mega earthquakes and tsunamis 1. Seismic survey in the outer rise region

Update History

| | |
|------------|-------------------------------------|
| 2019-07-05 | An observation data was registered. |
| 2019-05-31 | An observation data was registered. |

[Privacy Policy](#)
[Application for Data and Samples](#)
[Data Policy](#)

What's New
[Update History](#)
[Feeds](#)

[Amount of Public Info.](#)

Data
[Map Search](#)
[Data Tree](#)
[Detailed Search](#)

[KAIYO](#)
[YOKOSUKA](#)
[MIRAI](#)
[KAIREI](#)
[CHIKYU](#)
[KAIMEI](#)
[SHINSEI MARU](#)
[HAKUHO MARU](#)

[SHINKAI 2000](#)
[SHINKAI 6500](#)
[DEEP TOW](#)
[HYPER-DOLPHIN](#)
[URASHIMA](#)
[YOKOSUKA DEEP TOW](#)
[6K Camera DEEP TOW](#)
[6K Sonar DEEP TOW](#)
[KM-ROV](#)
[POWER GRAB SAMPLER \(SHELL\)](#)
[POWER GRAB SAMPLER \(CLOW\)](#)
[BMS](#)

Cruise ID:

[Go to a Dive Information](#)

Dive ID:

Copyright 2011 Japan Agency for Marine-Earth Science and Technology



JAMSTEC 国立研究開発法人
海洋研究開発機構
JAPAN AGENCY FOR MARINE-EARTH SCIENCE AND TECHNOLOGY