

## NATSUSHIMA NT13-21 Leg2 Bathymetry (MBES)

Last Modified: 2014-08-27

ReadMe Observation Data Data Format

Cruise ID: [NT13-21 Leg2](#)

Bathymetry (MBES): Processed (DMO)-Basic

Data Policy: [JAMSTEC](#)

Observation Items: Depth

Science Keywords:

OCEANS > BATHYMETRY/SEAFLOOR TOPOGRAPHY > BATHYMETRY  
SOLID EARTH > GEOMORHOLOGY

Cruise Report

[http://www.godac.jamstec.go.jp/catalog/data/doc\\_catalog/media/NT13-21\\_leg2\\_all.pdf](http://www.godac.jamstec.go.jp/catalog/data/doc_catalog/media/NT13-21_leg2_all.pdf)

### For Using Data

#### Principal Investigator

Data Management Office

#### Use Constraints

See [Terms and Conditions](#) about constrain of use.

#### Data Citation

See [Terms and Conditions](#) about data citation.

### Instrument

Instrument:

Multi-narrow beam echo sounder



### Overview

The data provided here are the bathymetric data obtained from the multibeam echo sounder system (MBES). The system transmits the shape echo sounder beam from the transmitter and receives the beam reflected from the seabed using the hydrophone. The water depth is calculated from the travel time of the beam between the transmitter and the receiver. Having many transmitters make fan beams across the keel, this system can obtain a lot of bathymetric data on a wide angle at once.

The travel time of the beam (from the transmitter to the seabed and from the seabed to the receiver) is corrected using the vertical profile of the sound velocity obtained from the in situ observations. (see section Sound velocity profile correction). The raw data with the low reliability such as the noise are removed using the software (see section Processed data).

### Measurement System

Manufacturer: Reson Inc.  
Type: SeaBat 8160  
Frequency: 50kHz  
Swath angle: Max 130°  
Beam angle: 1.5 \* 1.5°  
Beam number: 126  
Range: 10m - 3,000m  
Resolution (Depth) :1.4cm/2.9cm/8.6cm (It depends on depth.)

### Sound velocity profile correction

In the survey area, the sound velocity profile correction is made using the XBT data acquired during the cruise. On the other hand, in the transit area, e.g., from the survey area to the port, where we do not conduct the XBT observations, the data are corrected using the historical XBT data or the Argo float data.

### Processed Data

Following raw data with the low reliability are removed using the processing software "HIPS and SIPS" of CARIS Inc:

- Navigation error data.
- Data more than manufacturer specification (see section Measurement System)
- Spike noise data (If both of slopes calculated from the evaluated beam and prior/post one on the same swath are less than 5 degrees.)
- Side beam (Beam No.1-20,107-126 : Starboard is No.1 beam.)

The data quality is different in the survey and transit area because of the difference of the temperature data for the sound velocity profile correction. Therefore, we open the survey and transit area data separately. The rule of the file name is as follows.

File name :

- Survey area data : YYYYMMDD.dat
- Transit area data : TYYYYMMDD.dat

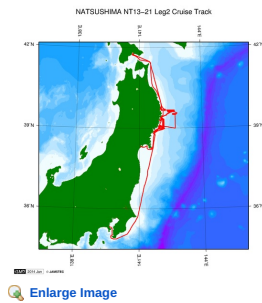
YYYY: year, MM: month, DD: day

"T" of the header indicates the transit area data.

### Note

- (1) Geodetic system: WGS84
- (2) The tide is not corrected.
- (3) These data are compressed in zip format, please use that after unpacking.
- (4) If you would like the raw data set, please contact us from "Contact Us" above.

### Related Information



**NT13-21 Leg2**

Ship Name: NATSUSHIMA  
 Period: 2013-10-20 - 2013-11-03  
 Chief Scientist: Takafumi Kasaya (JAMSTEC)  
 Project Name: [Tohoku Ecosystem-Associated Marine Sciences (TEAMS)]  
 Proposal Title: Marine Ecosystems Investigation, Impact by the mega-earthquake(the 2011 Earthquake off the Pacific coast of Tohoku) and Tsunami: For Recover and Rebuild of Sanriku Fisheries Activities

**Update History**

2014-08-27 An observation data was registerd.

**JAMSTEC**

- [Site Policy](#)
- [Privacy Policy](#)
- [Application for Data and Samples](#)
- [Data Policy](#)
- [What's New](#)
- [Update History](#)
- [Feeds](#)

**Lists**

- [Publication List](#)
- [Amount of Public Info.](#)
- Data**
- [Map Search](#)
- [Data Tree](#)
- [Detailed Search](#)

**Information of the Ships**

- NATSUSHIMA
- KAIYO
- YOKOSUKA
- MIRAI
- KAIREI
- CHIKYU
- KAIIMEI
- SHINSEI MARU
- HAKUHO MARU

**Information of the Submersibles**

- KAIKO
- SHINKAI 2000
- SHINKAI 6500
- DEEP TOW
- HYPER-DOLPHIN
- URASHIMA
- YOKOSUKA DEEP TOW
- 6K Camera DEEP TOW
- 6K Sonar DEEP TOW
- KM-ROV
- POWER GRAB SAMPLER (SHELL)
- POWER GRAB SAMPLER (CLOW)
- BMS

**Go to a Cruise Information**

Cruise ID:

**Go to a Dive Information**

Dive ID:

## NATSUSHIMA NT13-21 Leg2 Bathymetry (MBES)

Last Modified: 2014-08-27

[ReadMe](#) [Observation Data](#) [Data Format](#)

Cruise ID: [NT13-21 Leg2](#)

Bathymetry (MBES): Processed (DMO)-Basic

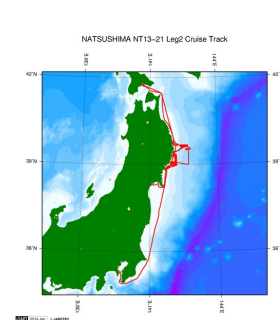
Data Policy: [JAMSTEC](#)

### Bathymetry XYZ

The one record length of the Processed Data file is 33 bytes.

No.	Column	Description	Format	Unit	Remarks
1	1 - 11	Longitude	f11.6	degree	+ : Eastern hemisphere - : Western hemisphere
2	13 - 22	Latitude	f10.6	degree	+ : Northern hemisphere - : Southern hemisphere
3	24 - 31	Depth	f9.3	m	
4	32 - 33	Terminator	a2		[CR][LF]

### Related Information



[Enlarge Image](#)

#### NT13-21 Leg2

Ship Name: NATSUSHIMA

Period: 2013-10-20 - 2013-11-03

Chief Scientist: Takafumi Kasaya (JAMSTEC)

Project Name: [Tohoku Ecosystem-Associated Marine Sciences (TEAMS)]

Proposal Title: Marine Ecosystems Investigation, Impact by the mega-earthquake(the 2011 Earthquake of the Pacific coast of Tohoku) and Tsunami: For Recover and Rebuild of Sanriku Fisheries Activities

### Update History

2014-08-27 An observation data was registered.

#### JAMSTEC

[Site Policy](#)  
[Privacy Policy](#)  
[Application for Data and Samples](#)  
[Data Policy](#)  
  
[What's New](#)  
[Update History](#)  
[Feeds](#)

[Lists](#)  
[Publication List](#)  
[Amount of Public Info.](#)  
  
[Data](#)  
[Map Search](#)  
[Data Tree](#)  
[Detailed Search](#)

#### Information of the Ships

NATSUSHIMA  
KAIYO  
YOKOSUKA  
MIRAI  
KAIREI  
CHIKYU  
KAIMEI  
SHINSEI MARU  
HAKUHO MARU

#### Information of the Submersibles

KAIKO  
SHINKAI 2000  
SHINKAI 6500  
DEEP TOW  
HYPER-DOLPHIN  
URASHIMA  
YOKOSUKA DEEP TOW  
6K Camera DEEP TOW  
6K Sonar DEEP TOW  
KM-ROV  
POWER GRAB SAMPLER (SHELL)  
POWER GRAB SAMPLER (CLOW)  
BMS

#### Go to a Cruise Information

Cruise ID:

#### Go to a Dive Information

Dive ID:

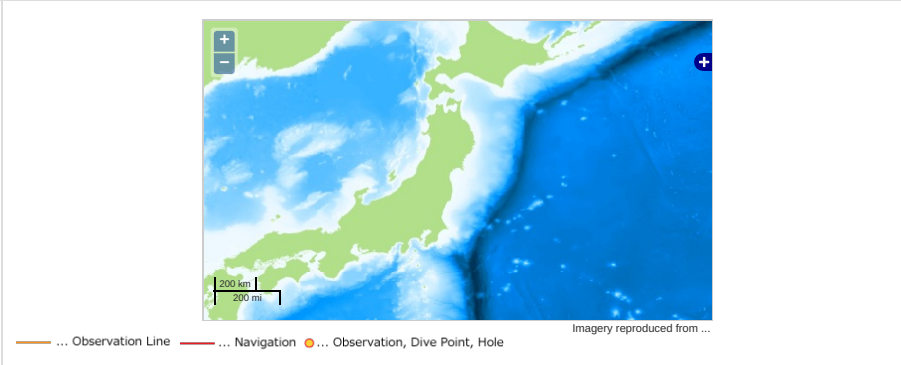
**NATSUSHIMA NT13-21 Leg2 Bathymetry (MBES)**

Last Modified: 2014-08-27

[ReadMe](#) [Observation Data](#) [Data Format](#)

Cruise ID: **NT13-21 Leg2**  
 Bathymetry (MBES): Processed (DMO)-Basic  
 Data Policy: **JAMSTEC**  
 Observation Items: Depth  
 Science Keywords:  
 OCEANS > BATHYMETRY/SEAFLOOR > BATHYMETRY  
 TOPOGRAPHY  
 SOLID EARTH > GEOMORPHOLOGY

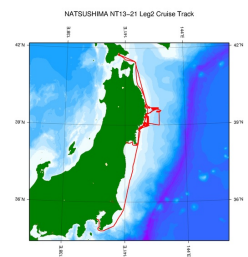
**Observation Map**



**Data List**

File names
<input type="checkbox"/> 20131023.dat
<input type="checkbox"/> 20131024.dat
<input type="checkbox"/> 20131027.dat
<input type="checkbox"/> 20131028.dat
<input type="checkbox"/> 20131029.dat
<input type="checkbox"/> 20131030.dat
<input type="checkbox"/> 20131031.dat
<input type="checkbox"/> 20131101.dat
<input type="checkbox"/> 20131102.dat

**Related Information**



**NT13-21 Leg2**  
 Ship Name: NATSUSHIMA  
 Period: 2013-10-20 - 2013-11-03  
 Chief Scientist: Takafumi Kasaya (JAMSTEC)  
 Project Name: [Tohoku Ecosystem-Associated Marine Sciences (TEAMS)]  
 Proposal: Marine Ecosystems Investigation, Impact by the mega-earthquake(the 2011 Earthquake of the Pacific coast of Tohoku) and Tsunami: For Recover and Rebuild of Sanriku Fisheries Activities

**Update History**

2014-08-27    An observation data was registerd.

JAMSTEC  
 Site Policy  
 Privacy Policy  
 Application for Data and Samples  
 Data Policy  
 What's New  
 Update History  
 Feeds

Lists  
 Publication List  
 Amount of Public Info.  
 Data  
 Map Search  
 Data Tree  
 Detailed Search

Information of the Ships  
 NATSUSHIMA  
 KAIYO  
 YOKOSUKA  
 MIRAI  
 KAIREI  
 CHIKYU  
 KAJIMEI  
 SHINSEI MARU  
 HAKUHO MARU

Information of the Submersibles  
 KAIKO  
 SHINKAI 2000  
 SHINKAI 6500  
 DEEP TOW  
 HYPER-DOLPHIN  
 URASHIMA  
 YOKOSUKA DEEP TOW  
 6K Camera DEEP TOW  
 6K Sonar DEEP TOW  
 KM-ROV  
 POWER GRAB SAMPLER (SHELL)  
 POWER GRAB SAMPLER (CLOW)  
 BMS

Go to a Cruise Information  
 Cruise ID:

Go to a Dive Information  
 Dive ID: