

MIRAI MR13-06 Leg2 Sea-surface Photosynthetically Active Radiation (PAR)

Last Modified: 2017-11-09

[ReadMe](#) [Observation Data](#) [Data Format](#)

Cruise ID: [MR13-06 Leg2](#)

Sea-surface Photosynthetically Active Radiation (PAR) : Raw

Data Policy: [JAMSTEC](#)

Observation Items:

Science Keywords:

OCEANS > OCEAN OPTICS > PHOTOSYNTHETICALLY ACTIVE RADIATION

Cruise Report

http://www.godac.jamstec.go.jp/catalog/data/doc_catalog/media/MR13-06_leg1-2_all.pdf

For Using Data

Principal Investigator

Data Management Office

Use Constraints

See [Terms and Conditions](#) about constrain of use.

Data Citation

See [Terms and Conditions](#) about data citation.

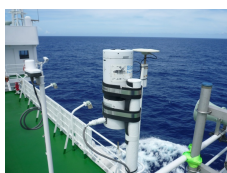
Period (UTC)

2013-10-09 19:38 – 2013-10-20 23:50

Instrument

Instrument:

Surface Photosynthetically available radiation (PAR) (~MR15-E01)



Overview

Photosynthetically available radiation (PAR) in the air was acquired by the radiometer PUV-510B, which was set up on the deck of the anti-rolling system .

Specifications

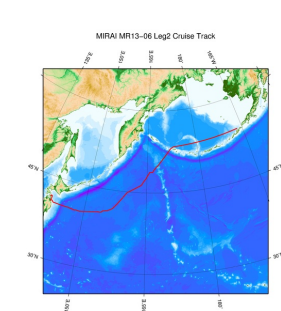
| | |
|-------------------------|--|
| Manufacturer: | Biospherical Instruments Inc. |
| Type: | PUV-510B |
| Logging rate: | 6 [second] |
| Location: | Starboard side of the deck on the anti-rolling system (18m from the sea surface) |
| Measurement wavelength: | 400 - 700 [nm] (PAR) |

Note

File naming rule for PAR_YYYYMMDD.txt.

| | |
|--------|-----------------------------|
| PAR_ : | Fixed as 'PAR_' |
| YYYY : | Recording start Year (UTC) |
| MM : | Recording start month (UTC) |
| DD : | Recording start day (UTC) |

Related Information



 [Enlarge Image](#)

MR13-06 Leg2

Ship Name: MIRAI
Period: 2013-10-09 - 2013-10-20
Chief Scientist: Shigeto Nishino (JAMSTEC)
Project Name: [Arctic Ocean Climate System Reaserch]
Proposal ▶ Study on environmental changes in the sea-ice reduction regions of the Arctic Ocean
Title:

Update History

| | |
|------------|------------------------------------|
| 2017-11-09 | An observation data was registerd. |
| 2015-03-31 | An observation data was registerd. |

[Privacy Policy](#)
[Application for Data and Samples](#)
[Data Policy](#)

[What's New](#)
[Update History](#)
[Feeds](#)

[Amount of Public Info.](#)

[Data](#)
[Map Search](#)
[Data Tree](#)
[Detailed Search](#)

[KAIYO](#)
[YOKOSUKA](#)
[MIRAI](#)
[KAIREI](#)
[CHIKYU](#)
[KAIMEI](#)
[SHINSEI MARU](#)
[HAKUHO MARU](#)

[KAIKO](#)
[SHINKAI 2000](#)
[SHINKAI 6500](#)
[DEEP TOW](#)
[HYPER-DOLPHIN](#)
[URASHIMA](#)
[YOKOSUKA DEEP TOW](#)
[6K Camera DEEP TOW](#)
[6K Sonar DEEP TOW](#)
[KM-ROV](#)
[POWER GRAB SAMPLER \(SHELL\)](#)
[POWER GRAB SAMPLER \(CLOW\)](#)
[BMS](#)

Cruise ID:

[Go to a Dive Information](#)

Dive ID:

Copyright 2011 Japan Agency for Marine-Earth Science and Technology



JAMSTEC 国立研究開発法人
海洋研究開発機構
JAPAN AGENCY FOR MARINE-EARTH SCIENCE AND TECHNOLOGY

MIRAI MR13-06 Leg2 Sea-surface Photosynthetically Active Radiation (PAR)

Last Modified: 2017-11-09

[ReadMe](#) [Observation Data](#) [Data Format](#)

Cruise ID: [MR13-06 Leg2](#)

Sea-surface Photosynthetically Active Radiation (PAR) Raw

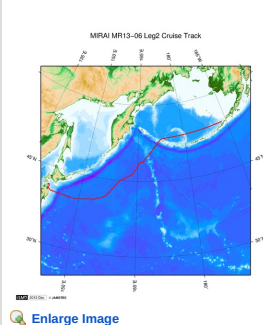
Data Policy: [JAMSTEC](#)

Sea-surface PAR

Comma Separated Value

| Column No. | Content | Remarks |
|------------|---------|---|
| 1 | DATE | Year, Month Day [YYYYMMDD] |
| 2 | TIME | Hour, Minute, Second [hhmmss] |
| 3 | PAR | PAR (Variable length, Floating-point, Exponential Form) [microEinsteins/cm^2/sec] |

Related Information



[Enlarge Image](#)

MR13-06 Leg2

Ship Name: MIRAI

Period: 2013-10-09 - 2013-10-20

Chief Scientist: Shigeto Nishino (JAMSTEC)

Project Name: [Arctic Ocean Climate System Reaserch]

Proposal ▶ Study on environmental changes in the sea-ice reduction regions of the Arctic Ocean

Title:

Update History

| | |
|------------|------------------------------------|
| 2017-11-09 | An observation data was registerd. |
| 2015-03-31 | An observation data was registerd. |

JAMSTEC

[Site Policy](#)

[Privacy Policy](#)

[Application for Data and Samples](#)

[Data Policy](#)

[Map Search](#)

[Data Tree](#)

[Detailed Search](#)

[What's New](#)

[Update History](#)

[Feeds](#)

Lists

[Publication List](#)

[Amount of Public Info.](#)

Data

[Map Search](#)

[Data Tree](#)

[Detailed Search](#)

Information of the Ships

[NATSUSHIMA](#)

[KAIYO](#)

[YOKOSUKA](#)

[MIRAI](#)

[KAIREI](#)

[CHIKYU](#)

[KAIMEI](#)

[SHINSEI MARU](#)

[HAKUHO MARU](#)

Information of the Submersibles

[KAIKO](#)

[SHINKAI 2000](#)

[SHINKAI 6500](#)

[DEEP TOW](#)

[HYPER-DOLPHIN](#)

[URASHIMA](#)

[YOKOSUKA DEEP TOW](#)

[6K Camera DEEP TOW](#)

[6K Sonar DEEP TOW](#)

[KM-ROV](#)

[POWER GRAB SAMPLER \(SHELL\)](#)

[POWER GRAB SAMPLER \(CLOW\)](#)

[BMS](#)

Go to a Cruise Information

Cruise ID:

Go to a Dive Information

Dive ID:

MIRAI MR13-06 Leg2 Sea-surface Photosynthetically Active Radiation (PAR)

Last Modified: 2017-11-09

[ReadMe](#) [Observation Data](#) [Data Format](#)

Cruise ID: [MR13-06 Leg2](#)

Sea-surface Photosynthetically Active Radiation (PAR) : Raw

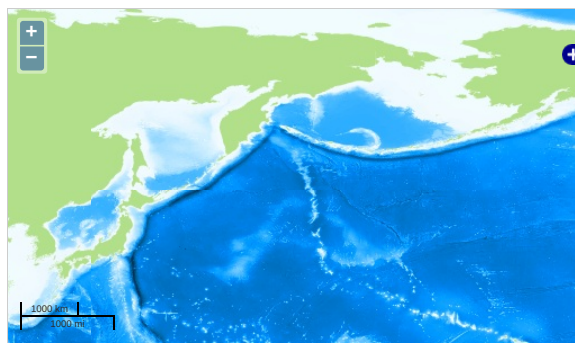
Data Policy: [JAMSTEC](#)

Observation Items:

Science Keywords:

OCEANS > OCEAN OPTICS > PHOTOSYNTHETICALLY ACTIVE RADIATION

Observation Map



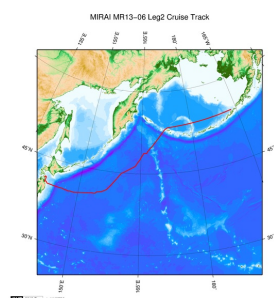
... Observation Line ... Navigation ... Observation, Dive Point, Hole

Data List

File names

- ☐ PAR_20131009.txt
- ☐ PAR_20131010.txt
- ☐ PAR_20131011.txt
- ☐ PAR_20131012.txt
- ☐ PAR_20131013.txt
- ☐ PAR_20131014.txt
- ☐ PAR_20131015.txt
- ☐ PAR_20131016.txt
- ☐ PAR_20131017.txt
- ☐ PAR_20131018.txt
- ☐ PAR_20131019.txt
- ☐ PAR_20131020.txt

Related Information



[Enlarge Image](#)

MR13-06 Leg2

Ship Name: MIRAI

Period: 2013-10-09 - 2013-10-20

Chief Scientist: Shigeto Nishino (JAMSTEC)

Project Name: [Arctic Ocean Climate System Research]

Proposal ▶ Study on environmental changes in the sea-ice reduction regions of the Arctic Ocean

Title:

Update History

2017-11-09 An observation data was registered.
2015-03-31 An observation data was registered.

JAMSTEC

[Site Policy](#)
[Privacy Policy](#)
[Application for Data and Samples](#)
[Data Policy](#)
[What's New](#)
[Update History](#)
[Feeds](#)

Lists

[Publication List](#)
[Amount of Public Info.](#)
[Data](#)
[Map Search](#)
[Data Tree](#)
[Detailed Search](#)

Information of the Ships

[NATSUSHIMA](#)
[KAIYO](#)
[YOKOSUKA](#)
[MIRAI](#)
[KAIREI](#)
[CHIKYU](#)
[KAIMEI](#)
[SHINSEI MARU](#)

Information of the Submersibles

[KAIKO](#)
[SHINKAI 2000](#)
[SHINKAI 6500](#)
[DEEP TOW](#)
[HYPER-DOLPHIN](#)
[URASHIMA](#)
[YOKOSUKA DEEP TOW](#)
[6K Camera DEEP TOW](#)

Go to a Cruise Information

Cruise ID:

Go to a Dive Information

Dive ID:

HAKUHO MARU

6K Sonar DEEP TOW

KM-ROV

POWER GRAB SAMPLER
(SHELL)

POWER GRAB SAMPLER
(CLOW)

BMS

Copyright 2011 Japan Agency for Marine-Earth Science and
Technology



JAMSTEC

国立研究開発法人
海洋研究開発機構
JAPAN AGENCY FOR MARINE EARTH SCIENCE AND TECHNOLOGY