

## KAIYO KY14-07 Bathymetry (MBES)

Last Modified: 2016-08-27

[ReadMe](#) [Observation Data](#) [Data Format](#)

Cruise ID: **KY14-07**

Bathymetry (MBES): Processed (DMO)-Basic

Data Policy: [JAMSTEC](#)

Observation Items: Depth

Science Keywords:

OCEANS > BATHYMETRY/SEAFLOOR TOPOGRAPHY > BATHYMETRY  
SOLID EARTH > GEOMORPHOLOGY

Cruise Report

[http://www.godac.jamstec.go.jp/catalog/data/doc\\_catalog/media/KY14-07\\_all.pdf](http://www.godac.jamstec.go.jp/catalog/data/doc_catalog/media/KY14-07_all.pdf)

### For Using Data

#### Principal Investigator

Data Management Office

#### Use Constraints

See [Terms and Conditions](#) about constrain of use.

#### Data Citation

See [Terms and Conditions](#) about data citation.

### Instrument

Instrument:

Multi-narrow beam echo sounder



### Overview

The data provided here are the bathymetric data obtained from the multibeam echo sounder system (MBES). The system transmits the shape echo sounder beam from the transmitter and receives the beam reflected from the seabed using the hydrophone. The water depth is calculated from the travel time of the beam between the transmitter and the receiver. Having many transmitters make fan beams across the keel, this system can obtain a lot of bathymetric data on a wide angle at once.

The travel time of the beam (from the transmitter to the seabed and from the seabed to the receiver) is corrected using the vertical profile of the sound velocity obtained from the in situ observations. (see section Sound velocity profile correction). The raw data with the low reliability such as the noise are removed using the software (see section Processed data).

### Measurement System

Manufacturer: SEABEAM INSTRUMENTS  
Type : SEABEAM 2112(Shipboard System)  
CLASSIC SEABEAM(Transducer)  
Frequency : 12kHz  
Swath angle: Max 150°  
Beam angle: 2.67 \* 2.67°  
Beam number: 151  
Range: 100m - 11,000m  
Resolution (Depth) : Depth(m) \* 2% or Depth(m) \* ±1m (One with large value is adopted.)

### Sound velocity profile correction

In the survey area, the sound velocity profile correction is made using the XBT data acquired during the cruise. On the other hand, in the transit area, e.g., from the survey area to the port, where we do not conduct the XBT observations, the data are corrected using the historical XBT data or the Argo float data.

### Processed Data

Following raw data with the low reliability are removed using the processing software "HIPS and SIPS" of CARIS Inc:

- Navigation error data.
- Data more than manufacturer specification (see section 2. System)
- Spike noise data (If both of slopes calculated from the evaluated beam and prior/post one on the same swath are less than 5 degrees.)
- Side beam (Beam No.1-45,105-151 : Starboard is No.1 beam.)

The data quality is different in the survey and transit area because of the difference of the temperature data for the sound velocity profile correction. Therefore, we open the survey and transit area data separately. The rule of the file name is as follows.

File name :

- Survey area data : YYYYMMDD.dat
- Transit area data : TYYYYMMDD.dat

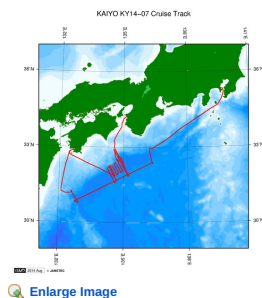
YYYY: year, MM: month, DD: day

"T" of the header indicates the transit area data.

### Note

- (1) Geodetic system: WGS84
- (2) The tide is not corrected.
- (3) These data are compressed in zip format, please use that after unpacking.
- (4) If you would like the raw data set, please contact us from "Contact Us" above.

### Related Information



[Enlarge Image](#)

#### KY14-07

Ship Name: KAIYO

Period: 2014-05-28 - 2014-06-09

Chief Scientist: Mikiya Yamashita (JAMSTEC)

Project Name: [Research project for earthquake and disaster prevention in the wide area around the Nankai Trough]

Proposal Title: ▶ Research project for compound disaster mitigation on the great earthquakes and tsunamis around the Nankai trough region (PMCS)

#### Update History

2016-08-27

An observation data was registered.

#### JAMSTEC

[Site Policy](#)  
[Privacy Policy](#)  
[Application for Data and Samples](#)  
[Data Policy](#)

[What's New](#)  
[Update History](#)  
[Feeds](#)

#### Lists

[Publication List](#)  
[Amount of Public Info.](#)

#### Data

[Map Search](#)  
[Data Tree](#)  
[Detailed Search](#)

#### Information of the Ships

[NATSUSHIMA](#)  
[KAIYO](#)  
[YOKOSUKA](#)  
[MIRAI](#)  
[KAIREI](#)  
[CHIKYU](#)  
[KAIMEI](#)  
[SHINSEI MARU](#)  
[HAKUHO MARU](#)

#### Information of the Submersibles

[KAIKO](#)  
[SHINKAI 2000](#)  
[SHINKAI 6500](#)  
[DEEP TOW](#)  
[HYPER-DOLPHIN](#)  
[URASHIMA](#)  
[YOKOSUKA DEEP TOW](#)  
[6K Camera DEEP TOW](#)  
[6K Sonar DEEP TOW](#)  
[KM-ROV](#)  
[POWER GRAB SAMPLER \(SHELL\)](#)  
[POWER GRAB SAMPLER \(CLOW\)](#)  
[BMS](#)

#### Go to a Cruise Information

Cruise ID:

#### Go to a Dive Information

Dive ID:

Copyright 2011 Japan Agency for Marine-Earth Science and Technology



**JAMSTEC**

国立研究開発法人  
海洋研究開発機構  
JAPAN AGENCY FOR MARINE-EARTH SCIENCE AND TECHNOLOGY

## KAIYO KY14-07 Bathymetry (MBES)

Last Modified: 2016-08-27

[ReadMe](#) [Observation Data](#) [Data Format](#)

Cruise ID: [KY14-07](#)

Bathymetry (MBES): Processed (DMO)-Basic

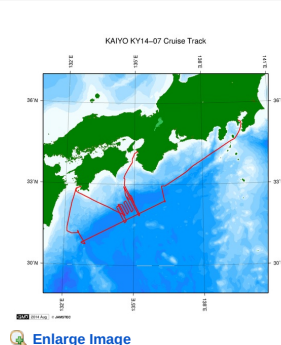
Data Policy: [JAMSTEC](#)

### Bathymetry XYZ

The one record length of the Processed Data file is 33 bytes.

No.	Column	Description	Format	Unit	Remarks
1	1 - 11	Longitude	f11.6	degree	+ : Eastern hemisphere - : Western hemisphere
2	13 - 22	Latitude	f10.6	degree	+ : Northern hemisphere - : Southern hemisphere
3	24 - 31	Depth	f9.3	m	
4	32 - 33	Terminator	a2		[CR][LF]

### Related Information



#### KY14-07

Ship Name: KAIYO

Period: 2014-05-28 - 2014-06-09

Chief Scientist: Mikiya Yamashita (JAMSTEC)

Project Name: [Research project for earthquake and disaster prevention in the wide area around the Nankai Trough]

Proposal Title: ▶ Research project for compound disaster mitigation on the great earthquakes and tsunamis around the Nankai trough region (PMCS)

[Enlarge Image](#)

### Update History

2016-08-27 An observation data was registered.

#### JAMSTEC

[Site Policy](#)

[Privacy Policy](#)

[Application for Data and Samples](#)

[Data Policy](#)

[What's New](#)

[Update History](#)

[Feeds](#)

#### Lists

[Publication List](#)

[Amount of Public Info.](#)

#### Data

[Map Search](#)

[Data Tree](#)

[Detailed Search](#)

#### Information of the Ships

[NATSUSHIMA](#)

[KAIYO](#)

[YOKOSUKA](#)

[MIRAI](#)

[KAIREI](#)

[CHIKYU](#)

[KAIMEI](#)

[SHINSEI MARU](#)

[HAKUHO MARU](#)

#### Information of the Submersibles

[KAIKO](#)

[SHINKAI 2000](#)

[SHINKAI 6500](#)

[DEEP TOW](#)

[HYPER-DOLPHIN](#)

[URASHIMA](#)

[YOKOSUKA DEEP TOW](#)

[6K Camera DEEP TOW](#)

[6K Sonar DEEP TOW](#)

[KM-ROV](#)

[POWER GRAB SAMPLER \(SHELL\)](#)

[POWER GRAB SAMPLER \(CLOW\)](#)

[BMS](#)

#### Go to a Cruise Information

Cruise ID:

#### Go to a Dive Information

Dive ID:

## KAIYO KY14-07 Bathymetry (MBES)

Last Modified: 2016-08-27

[ReadMe](#) [Observation Data](#) [Data Format](#)

Cruise ID: **KY14-07**

Bathymetry (MBES): Processed (DMO)-Basic

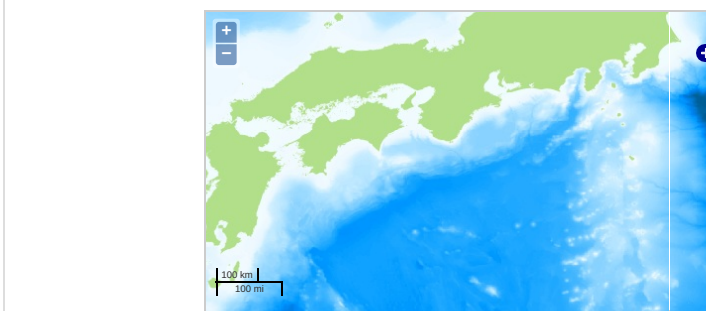
Data Policy: **JAMSTEC**

Observation Items: Depth

Science Keywords:

OCEANS > BATHYMETRY/SEAFLOOR > BATHYMETRY  
TOPOGRAPHY  
SOLID EARTH > GEOMORPHOLOGY

### Observation Map



... Observation Line ... Navigation ... Observation, Dive Point, Hole

Imagery reproduced from ...

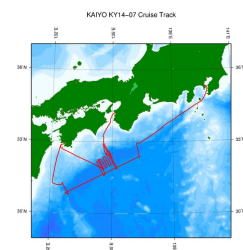
### Data List

[Add to Basket](#)

#### File names

<input type="checkbox"/>	20140528.dat
<input type="checkbox"/>	20140529.dat
<input type="checkbox"/>	20140530.dat
<input type="checkbox"/>	20140531.dat
<input type="checkbox"/>	20140601.dat
<input type="checkbox"/>	20140602.dat
<input type="checkbox"/>	20140605.dat
<input type="checkbox"/>	20140606.dat
<input type="checkbox"/>	20140607.dat
<input type="checkbox"/>	20140608.dat
<input type="checkbox"/>	T20140528.dat
<input type="checkbox"/>	T20140602.dat
<input type="checkbox"/>	T20140604.dat
<input type="checkbox"/>	T20140605.dat
<input type="checkbox"/>	T20140608.dat
<input type="checkbox"/>	T20140609.dat

### Related Information



[Enlarge Image](#)

#### KY14-07

Ship Name: KAIYO

Period: 2014-05-28 - 2014-06-09

Chief Scientist: Mikiya Yamashita (JAMSTEC)

Project Name: [Research project for earthquake and disaster prevention in the wide area around the Nankai Trough]

Proposal ▶ Research project for compound disaster mitigation on the great earthquakes and tsunamis around the Nankai trough region (PMCS)

Title:

### Update History

2016-08-27 An observation data was registerd.

#### JAMSTEC

[Site Policy](#)  
[Privacy Policy](#)  
[Application for Data and Samples](#)  
[Data Policy](#)

#### What's New

[Update History](#)  
[Feeds](#)

#### Lists

[Publication List](#)  
[Amount of Public Info.](#)

#### Data

[Map Search](#)  
[Data Tree](#)  
[Detailed Search](#)

#### Information of the Ships

[NATSUSHIMA](#)  
[KAIYO](#)  
[YOKOSUKA](#)  
[MIRAI](#)  
[KAIREI](#)  
[CHIKYU](#)  
[KAIMEI](#)  
[SHINSEI MARU](#)  
[HAKUHO MARU](#)

#### Information of the Submersibles

[KAIKO](#)  
[SHINKAI 2000](#)  
[SHINKAI 6500](#)  
[DEEP TOW](#)  
[HYPER-DOLPHIN](#)  
[URASHIMA](#)  
[YOKOSUKA DEEP TOW](#)  
[6K Camera DEEP TOW](#)  
[6K Sonar DEEP TOW](#)  
[KM-ROV](#)  
[POWER GRAB SAMPLER \(SHELL\)](#)  
[POWER GRAB SAMPLER](#)

#### Go to a Cruise Information

Cruise ID:

#### Go to a Dive Information

Dive ID:

