

## MIRAI MR13-E02 Leg1 Sea-surface Photosynthetically Active Radiation (PAR)

Last Modified: 2017-11-09

[ReadMe](#) [Observation Data](#) [Data Format](#)

Cruise ID: [MR13-E02 Leg1](#)

Sea-surface Photosynthetically Active Radiation (PAR) : Raw

Data Policy: [JAMSTEC](#)

Observation Items:

Science Keywords:

OCEANS > OCEAN OPTICS > PHOTOSYNTHETICALLY ACTIVE RADIATION

Cruise Report

[http://www.godac.jamstec.go.jp/catalog/data/doc\\_catalog/media/MR13-E02\\_leg1\\_all.pdf](http://www.godac.jamstec.go.jp/catalog/data/doc_catalog/media/MR13-E02_leg1_all.pdf)

### For Using Data

#### Principal Investigator

Data Management Office

#### Use Constraints

See [Terms and Conditions](#) about constrain of use.

#### Data Citation

See [Terms and Conditions](#) about data citation.

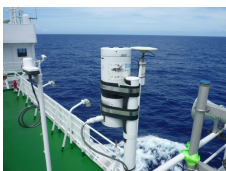
### Period (UTC)

2013-11-24 23:50 – 2013-12-09 00:20

### Instrument

Instrument:

Surface Photosynthetically available radiation (PAR) (~MR15-E01)



### Overview

Photosynthetically available radiation (PAR) in the air was acquired by the radiometer PUV-510B, which was set up on the deck of the anti-rolling system .

### Specifications

Manufacturer:	Biospherical Instruments Inc.
Type:	PUV-510B
Logging rate:	6 [second]
Location:	Starboard side of the deck on the anti-rolling system (18m from the sea surface)
Measurement wavelength:	400 - 700 [nm] (PAR)

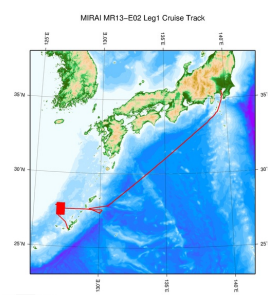
### Note

File naming rule for PAR\_YYYYMMDD.txt.

PAR_ :	Fixed as 'PAR_'
YYYY :	Recording start Year (UTC)
MM :	Recording start month (UTC)
DD :	Recording start day (UTC)

### Related Information

☒ Cruise Data ☐ Dive Data



 [Enlarge Image](#)

#### [MR13-E02 Leg1](#)

Ship Name: MIRAI

Period: 2013-11-24 - 2013-12-09

Chief Scientist: Takafumi Kasaya (JAMSTEC)

Proposal Marine electro-magnetic survey around Iheya North knoll field

Title:

### Update History

2017-11-09	An observation data was registerd.
2015-08-26	An observation data was registerd.

[Site Policy](#)  
[Privacy Policy](#)  
[Application for Data and Samples](#)  
[Data Policy](#)  
  
**What's New**  
[Update History](#)  
[Feeds](#)

[Publication List](#)  
[Amount of Public Info.](#)  
  
**Data**  
[Map Search](#)  
[Data Tree](#)  
[Detailed Search](#)

[NATSUSHIMA](#)  
[KAIYO](#)  
[YOKOSUKA](#)  
[MIRAI](#)  
[KAIREI](#)  
[CHIKYU](#)  
[KAIMEI](#)  
[SHINSEI MARU](#)  
[HAKUHO MARU](#)

#### Submersibles

[KAIKO](#)  
[SHINKAI 2000](#)  
[SHINKAI 6500](#)  
[DEEP TOW](#)  
[HYPER-DOLPHIN](#)  
[URASHIMA](#)  
[YOKOSUKA DEEP TOW](#)  
[6K Camera DEEP TOW](#)  
[6K Sonar DEEP TOW](#)  
[KM-ROV](#)  
[POWER GRAB SAMPLER \(SHELL\)](#)  
[POWER GRAB SAMPLER \(CLOW\)](#)  
[BMS](#)

Cruise ID:

#### Go to a Dive Information

Dive ID:

Copyright 2011 Japan Agency for Marine-Earth Science and Technology



**JAMSTEC**  
JAPAN AGENCY FOR MARINE-EARTH SCIENCE AND TECHNOLOGY

国立研究開発法人  
海洋研究開発機構

## MIRAI MR13-E02 Leg1 Sea-surface Photosynthetically Active Radiation (PAR)

Last Modified: 2017-11-09

[ReadMe](#) [Observation Data](#) [Data Format](#)

Cruise ID: [MR13-E02 Leg1](#)

Sea-surface Photosynthetically Active Radiation (PAR) Raw

Data Policy: [JAMSTEC](#)

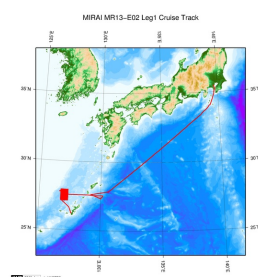
### Sea-surface PAR

Comma Separated Value

Column No.	Content	Remarks
1	DATE	Year, Month Day [YYYYMMDD]
2	TIME	Hour, Minute, Second [hhmmss]
3	PAR	PAR ( Variable length, Floating-point, Exponential Form) [microEinsteins/cm^2/sec]

### Related Information

[Cruise Data](#) [Dive Data](#)



[Enlarge Image](#)

#### MR13-E02 Leg1

Ship Name: MIRAI

Period: 2013-11-24 - 2013-12-09

Chief Scientist: Takafumi Kasaya (JAMSTEC)

Proposal Marine electro-magnetic survey around Iheya North knoll field

Title:

### Update History

2017-11-09	An observation data was registerd.
2015-08-26	An observation data was registerd.

**JAMSTEC**  
[Site Policy](#)  
[Privacy Policy](#)  
[Application for Data and Samples](#)  
[Data Policy](#)

**What's New**  
[Update History](#)  
[Feeds](#)

**Lists**  
[Publication List](#)  
[Amount of Public Info.](#)  
**Data**  
[Map Search](#)  
[Data Tree](#)  
[Detailed Search](#)

**Information of the Ships**  
[NATSUSHIMA](#)  
[KAIYO](#)  
[YOKOSUKA](#)  
[MIRAI](#)  
[KAIREI](#)  
[CHIKYU](#)  
[KAIMEI](#)  
[SHINSEI MARU](#)  
[HAKUHO MARU](#)

**Information of the Submersibles**  
[KAIKO](#)  
[SHINKAI 2000](#)  
[SHINKAI 6500](#)  
[DEEP TOW](#)  
[HYPER-DOLPHIN](#)  
[URASHIMA](#)  
[YOKOSUKA DEEP TOW](#)  
[6K Camera DEEP TOW](#)  
[6K Sonar DEEP TOW](#)  
[KM-ROV](#)  
[POWER GRAB](#)  
[SAMPLER \(SHELL\)](#)  
[POWER GRAB](#)  
[SAMPLER \(CLOW\)](#)  
[BMS](#)

#### Go to a Cruise Information

Cruise ID:

#### Go to a Dive Information

Dive ID:

## MIRAI MR13-E02 Leg1 Sea-surface Photosynthetically Active Radiation (PAR)

Last Modified: 2017-11-09

[ReadMe](#) [Observation Data](#) [Data Format](#)

Cruise ID: [MR13-E02 Leg1](#)

Sea-surface Photosynthetically Active Radiation (PAR) : Raw

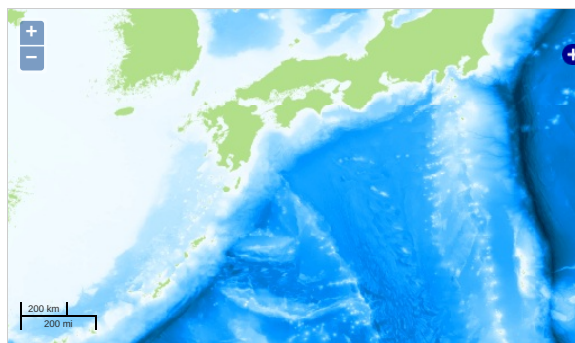
Data Policy: [JAMSTEC](#)

Observation Items:

Science Keywords:

OCEANS > OCEAN OPTICS > PHOTOSYNTHETICALLY ACTIVE RADIATION

### Observation Map



... Observation Line ... Navigation ... Observation, Dive Point, Hole

Imagery reproduced from ...

### Data List

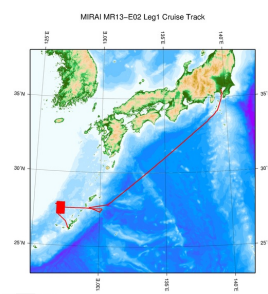
[Add to Basket](#)

#### File names

- ☐ PAR\_20131124.txt
- ☐ PAR\_20131125.txt
- ☐ PAR\_20131126.txt
- ☐ PAR\_20131127.txt
- ☐ PAR\_20131128.txt
- ☐ PAR\_20131129.txt
- ☐ PAR\_20131130.txt
- ☐ PAR\_20131201.txt
- ☐ PAR\_20131202.txt
- ☐ PAR\_20131203.txt
- ☐ PAR\_20131204.txt
- ☐ PAR\_20131205.txt
- ☐ PAR\_20131206.txt
- ☐ PAR\_20131207.txt
- ☐ PAR\_20131208.txt
- ☐ PAR\_20131209.txt

### Related Information

☒ Cruise Data ☐ Dive Data



[Enlarge Image](#)

#### MR13-E02 Leg1

Ship Name: MIRAI

Period: 2013-11-24 - 2013-12-09

Chief Scientist: Takafumi Kasaya (JAMSTEC)

Proposal Marine electro-magnetic survey around Iheya North knoll field

Title:

### Update History

2017-11-09	An observation data was registered.
2015-08-26	An observation data was registered.

Application for Data and  
Samples  
Data Policy

What's New  
Update History  
Feeds

Data  
Map Search  
Data Tree  
Detailed Search

YOKOSUKA  
MIRAI  
KAIREI  
CHIKYU  
KAIMEI  
SHINSEI MARU  
HAKUHO MARU

SHINKAI 2000  
SHINKAI 6500  
DEEP TOW  
HYPER-DOLPHIN  
URASHIMA  
YOKOSUKA DEEP TOW  
6K Camera DEEP TOW  
6K Sonar DEEP TOW  
KM-ROV  
POWER GRAB SAMPLER  
(SHELL)  
POWER GRAB SAMPLER  
(CLOW)  
BMS

Go to a Dive Information

Dive ID:

Copyright 2011 Japan Agency for Marine-Earth Science and  
Technology



**JAMSTEC**  
JAPAN AGENCY FOR MARINE-EARTH SCIENCE AND TECHNOLOGY

国立研究開発法人  
海洋研究開発機構