

KAIREI KR18-12C Gravity

Last Modified: 2019-07-05

ReadMe

Cruise ID: [KR18-12C](#)

Gravity: Raw

Data Policy: [JAMSTEC](#)

Observation Items: Absolute gravity

Science Keywords:

OCEANS > MARINE GEOPHYSICS > MARINE GRAVITY FIELD
SOLID EARTH > GEODETICS/GRAVITY > GRAVITY

Cruise Report

http://www.godac.jamstec.go.jp/catalog/data/doc_catalog/media/KR18-12C_all.pdf

For Using Data

Principal Investigator

Data Management Office

Use Constraints

See [Terms and Conditions](#) about constrain of use.

Data Citation

See [Terms and Conditions](#) about data citation.

Instrument

Instrument:

Shipboard gravimeter (KR16-E03 -)



Instrument:

Microgravimeter (KR08-02 -)



Measurement System

(1) Shipboard gravity meter

The system consists of two main assemblies; the gyro-stabilized platform including the gravity sensor and the data handling & control system.

Manufacturer : Micro-g LaCoste, Inc.

Model : MGS-6

Measuring range : 500,000 mGal

Accuracy : 0.6 mGal

Drift rate : < 3.0 mGal/month

Installation : Gravity meter room

Reference: "MGS-6 Marine Gravity System 6 User's Manual", Micro-g LaCoste 2015

(2) Portable gravity meter

The portable gravity meter consists of two modules; the data acquisition/control module and the gravity sensor module. The gravity sensor is enclosed in a thermostatically controlled vacuum chamber. The portable gravity meter is used to calculate the absolute gravity of the port with reference to the gravity station of the Japan Gravity Standardization Net of the Geographical Survey Institute of Japan.

Manufacturer : SCINTREX

Model : CG-5

Measurement range : 8,000 mGal

Standard deviation : 0.005 mGal

Drift rate : < 0.02 mGal/day

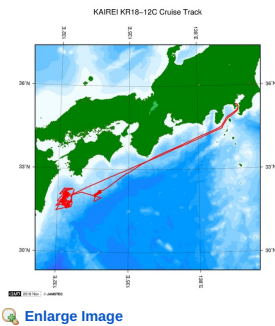
Reference: "CG-5 OPERATION MANUAL", SCINTREX

About this data

We have no plan to process the data due to equipment adjustment.

Please refer to the "Contact Us" if you wish to use the raw data.

Related Information



KR18-12C

Ship Name: KAIKEI

Period: 2018-09-07 - 2018-09-21

Chief Scientist: Toshiya Kanamatsu (JAMSTEC)

Project Name: [Research project for earthquake and disaster prevention in the wide area around the Nankai Trough]

Proposal Title: Research Project for Compound Disaster Mitigation on the Great Earthquakes and Tsunamis around the Nankai Trough Region

Update History

| | |
|------------|-------------------------------------|
| 2019-07-05 | An observation data was registered. |
| 2019-05-31 | An observation data was registered. |

JAMSTEC

Site Policy

Privacy Policy

Application for Data and Samples

Data Policy

What's New

Update History

Feeds

Lists

Publication List

Amount of Public Info.

Data

Map Search

Data Tree

Detailed Search

Information of the Ships

NATSUSHIMA

KAIYO

YOKOSUKA

MIRAI

KAIKEI

CHIKYU

KAMEI

SHINSEI MARU

HAKUHO MARU

Information of the Submersibles

KAIKO

SHINKAI 2000

SHINKAI 6500

DEEP TOW

HYPER-DOLPHIN

URASHIMA

YOKOSUKA DEEP TOW

6K Camera DEEP TOW

6K Sonar DEEP TOW

KM-ROV

POWER GRAB SAMPLER

(SHELL)

POWER GRAB SAMPLER

(CLOW)

BMS

Go to a Cruise Information

Cruise ID:

Go to a Dive Information

Dive ID:

Copyright 2011 Japan Agency for Marine-Earth Science and Technology



JAMSTEC 国立研究開発法人
海洋研究開発機構
JAPAN AGENCY FOR MARINE-EARTH SCIENCE AND TECHNOLOGY

KAIREI KR18-12C Gravity

Last Modified: 2019-07-05

ReadMe

Cruise ID: [KR18-12C](#)

Gravity: Raw

Data Policy: [JAMSTEC](#)

Observation Items: Absolute gravity

Science Keywords:

OCEANS > MARINE GEOPHYSICS > MARINE GRAVITY FIELD
SOLID EARTH > GEODETICS/GRAVITY > GRAVITY

Cruise Report

http://www.godac.jamstec.go.jp/catalog/data/doc_catalog/media/KR18-12C_all.pdf

For Using Data

Principal Investigator

Data Management Office

Use Constraints

See [Terms and Conditions](#) about constrain of use.

Data Citation

See [Terms and Conditions](#) about data citation.

Instrument

Instrument:

Shipboard gravimeter (KR16-E03 -)



Instrument:

Microgravimeter (KR08-02 -)



Measurement System

(1) Shipboard gravity meter

The system consists of two main assemblies; the gyro-stabilized platform including the gravity sensor and the data handling & control system.

Manufacturer : Micro-g LaCoste, Inc.

Model : MGS-6

Measuring range : 500,000 mGal

Accuracy : 0.6 mGal

Drift rate : < 3.0 mGal/month

Installation : Gravity meter room

Reference: "MGS-6 Marine Gravity System 6 User's Manual", Micro-g LaCoste 2015

(2) Portable gravity meter

The portable gravity meter consists of two modules; the data acquisition/control module and the gravity sensor module. The gravity sensor is enclosed in a thermostatically controlled vacuum chamber. The portable gravity meter is used to calculate the absolute gravity of the port with reference to the gravity station of the Japan Gravity Standardization Net of the Geographical Survey Institute of Japan.

Manufacturer : SCINTREX

Model : CG-5

Measurement range : 8,000 mGal

Standard deviation : 0.005 mGal

Drift rate : < 0.02 mGal/day

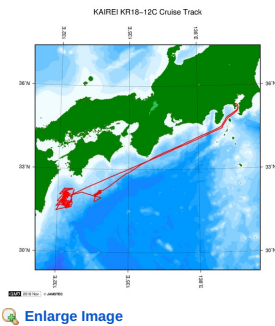
Reference: "CG-5 OPERATION MANUAL", SCINTREX

About this data

We have no plan to process the data due to equipment adjustment.

Please refer to the "Contact Us" if you wish to use the raw data.

Related Information



KR18-12C

Ship Name: KAIKEI

Period: 2018-09-07 - 2018-09-21

Chief Scientist: Toshiya Kanamatsu (JAMSTEC)

Project Name: [Research project for earthquake and disaster prevention in the wide area around the Nankai Trough]

Proposal Title: Research Project for Compound Disaster Mitigation on the Great Earthquakes and Tsunamis around the Nankai Trough Region

Update History

| | |
|------------|-------------------------------------|
| 2019-07-05 | An observation data was registered. |
| 2019-05-31 | An observation data was registered. |

JAMSTEC

Site Policy

Privacy Policy

Application for Data and Samples

Data Policy

What's New

Update History

Feeds

Lists

Publication List

Amount of Public Info.

Data

Map Search

Data Tree

Detailed Search

Information of the Ships

NATSUSHIMA

KAIYO

YOKOSUKA

MIRAI

KAIKEI

CHIKYU

KAMEI

SHINSEI MARU

HAKUHO MARU

Information of the Submersibles

KAIKO

SHINKAI 2000

SHINKAI 6500

DEEP TOW

HYPER-DOLPHIN

URASHIMA

YOKOSUKA DEEP TOW

6K Camera DEEP TOW

6K Sonar DEEP TOW

KM-ROV

POWER GRAB SAMPLER

(SHELL)

POWER GRAB SAMPLER

(CLOW)

BMS

Go to a Cruise Information

Cruise ID:

Go to a Dive Information

Dive ID:

Copyright 2011 Japan Agency for Marine-Earth Science and Technology



JAMSTEC 国立研究開発法人
海洋研究開発機構
JAPAN AGENCY FOR MARINE-EARTH SCIENCE AND TECHNOLOGY

KAIREI KR18-12C Gravity

Last Modified: 2019-07-05

ReadMe

Cruise ID: **KR18-12C**

Gravity: Raw

Data Policy: **JAMSTEC**

Observation Items: Absolute gravity

Science Keywords:

OCEANS > MARINE GEOPHYSICS > MARINE GRAVITY FIELD
SOLID EARTH > GEODETICS/GRAVITY > GRAVITY

Cruise Report

http://www.godac.jamstec.go.jp/catalog/data/doc_catalog/media/KR18-12C_all.pdf

For Using Data

Principal Investigator

Data Management Office

Use Constraints

See [Terms and Conditions](#) about constrain of use.

Data Citation

See [Terms and Conditions](#) about data citation.

Instrument

Instrument:

Shipboard gravimeter (KR16-E03 -)



Instrument:

Microgravimeter (KR08-02 -)



Measurement System

(1) Shipboard gravity meter

The system consists of two main assemblies; the gyro-stabilized platform including the gravity sensor and the data handling & control system.

Manufacturer : Micro-g LaCoste, Inc.

Model : MGS-6

Measuring range : 500,000 mGal

Accuracy : 0.6 mGal

Drift rate : < 3.0 mGal/month

Installation : Gravity meter room

Reference: "MGS-6 Marine Gravity System 6 User's Manual", Micro-g LaCoste 2015

(2) Portable gravity meter

The portable gravity meter consists of two modules; the data acquisition/control module and the gravity sensor module. The gravity sensor is enclosed in a thermostatically controlled vacuum chamber. The portable gravity meter is used to calculate the absolute gravity of the port with reference to the gravity station of the Japan Gravity Standardization Net of the Geographical Survey Institute of Japan.

Manufacturer : SCINTREX

Model : CG-5

Measurement range : 8,000 mGal

Standard deviation : 0.005 mGal

Drift rate : < 0.02 mGal/day

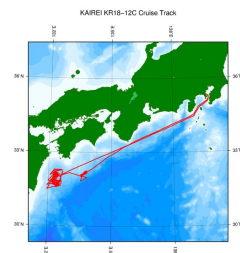
Reference: "CG-5 OPERATION MANUAL", SCINTREX

About this data

We have no plan to process the data due to equipment adjustment.

Please refer to the "Contact Us" if you wish to use the raw data.

Related Information



[Enlarge Image](#)

KR18-12C

Ship Name: KAIKEI

Period: 2018-09-07 - 2018-09-21

Chief Scientist: Toshiya Kanamatsu (JAMSTEC)

Project Name: [Research project for earthquake and disaster prevention in the wide area around the Nankai Trough]

Proposal Research Project for Compound Disaster Mitigation on the Great Earthquakes and Tsunamis

Title: around the Nankai Trough Region

Update History

| | |
|------------|-------------------------------------|
| 2019-07-05 | An observation data was registered. |
| 2019-05-31 | An observation data was registered. |

[Privacy Policy](#)
[Application for Data and Samples](#)
[Data Policy](#)

What's New
[Update History](#)
[Feeds](#)

[Amount of Public Info.](#)

Data
[Map Search](#)
[Data Tree](#)
[Detailed Search](#)

[KAIYO](#)
[YOKOSUKA](#)
[MIRAI](#)
[KAIREI](#)
[CHIKYU](#)
[KAIMEI](#)
[SHINSEI MARU](#)
[HAKUHO MARU](#)

[SHINKAI 2000](#)
[SHINKAI 6500](#)
[DEEP TOW](#)
[HYPER-DOLPHIN](#)
[URASHIMA](#)
[YOKOSUKA DEEP TOW](#)
[6K Camera DEEP TOW](#)
[6K Sonar DEEP TOW](#)
[KM-ROV](#)
[POWER GRAB SAMPLER \(SHELL\)](#)
[POWER GRAB SAMPLER \(CLOW\)](#)
[BMS](#)

Cruise ID:

[Go to a Dive Information](#)

Dive ID:

Copyright 2011 Japan Agency for Marine-Earth Science and Technology



JAMSTEC 国立研究開発法人
海洋研究開発機構
JAPAN AGENCY FOR MARINE-EARTH SCIENCE AND TECHNOLOGY