

MIRAI MR16-09 Leg1 Sea-surface Photosynthetically Active Radiation (PAR)

Last Modified: 2017-11-09

[ReadMe](#) [Observation Data](#) [Data Format](#)

Cruise ID: [MR16-09 Leg1](#)

Sea-surface Photosynthetically Active Radiation (PAR) : Raw

Data Policy: [JAMSTEC](#)

Observation Items: PAR

Science Keywords:

OCEANS > OCEAN OPTICS > PHOTOSYNTHETICALLY ACTIVE RADIATION

Cruise Report

http://www.godac.jamstec.go.jp/catalog/data/doc_catalog/media/MR16-09_leg1-4_all.pdf

For Using Data

Principal Investigator

Data Management Office

Use Constraints

See [Terms and Conditions](#) about constrain of use.

Data Citation

See [Terms and Conditions](#) about data citation.

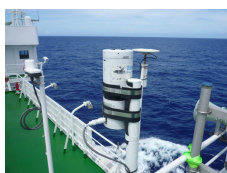
Period (UTC)

2016-12-28 18:46 – 2017-01-15 06:13

Instrument

Instrument:

Surface Photosynthetically available radiation (PAR) (MR15-01~)



Overview

Photosynthetically available radiation (PAR) in the air was acquired by the radiometer PUV-510B, which was set up on the deck of the anti-rolling system. In addition, Ultraviolet irradiance (4 wavelengths) are also collected since May 2015 (after MR15-01 cruise).

Specifications

Manufacturer: Biospherical Instruments Inc.
Type: PUV-510B
Logging rate: 6 [second]
Location: Starboard side of the deck on the anti-rolling system (18m from the sea surface)

[PAR]

Measurement wavelength: 400 - 700 [nm]

[Ultraviolet irradiance]

Measurement wavelength: 305, 320, 340, 380 [nm]

Note

File naming rule for PAR_YYYYMMDD.txt.

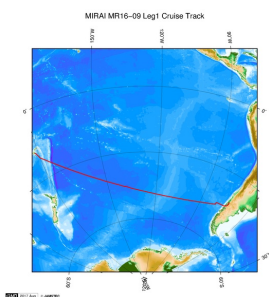
PAR_ : Fixed as 'PAR_'

YYYY : Recording start Year (UTC)

MM : Recording start month (UTC)

DD : Recording start day (UTC)

Related Information



 [Enlarge Image](#)

MR16-09 Leg1

Ship Name: MIRAI

Period: 2016-12-26 - 2017-01-17

Chief Scientist: Akihiko Murata (JAMSTEC)

Proposal ▶ Ship-borne measurements of aerosols in the marine atmosphere: Investigation of potential influence of marine aerosol particles on the climate;

Title:

Update History

2017-11-09	An observation data was registered.
2017-07-31	An observation data was registered.

JAMSTEC

[Site Policy](#)
[Privacy Policy](#)
[Application for Data and Samples](#)
[Data Policy](#)

What's New
[Update History](#)
[Feeds](#)

Lists

[Publication List](#)
[Amount of Public Info.](#)

Data

[Map Search](#)
[Data Tree](#)
[Detailed Search](#)

Information of the Ships

[NATSUSHIMA](#)
[KAIYO](#)
[YOKOSUKA](#)
[MIRAI](#)
[KAIREI](#)
[CHIKYU](#)
[KAIMEI](#)
[SHINSEI MARU](#)
[HAKUHO MARU](#)

Information of the Submersibles

[KAIKO](#)
[SHINKAI 2000](#)
[SHINKAI 6500](#)
[DEEP TOW](#)
[HYPER-DOLPHIN](#)
[URASHIMA](#)
[YOKOSUKA DEEP TOW](#)
[6K Camera DEEP TOW](#)
[6K Sonar DEEP TOW](#)
[KM-ROV](#)
[POWER GRAB SAMPLER \(SHELL\)](#)
[POWER GRAB SAMPLER \(CLOW\)](#)
[BMS](#)

Go to a Cruise Information

Cruise ID:

Go to a Dive Information

Dive ID:

Copyright 2011 Japan Agency for Marine-Earth Science and Technology



JAMSTEC 国立研究開発法人
海洋研究開発機構
JAPAN AGENCY FOR MARINE-EARTH SCIENCE AND TECHNOLOGY

MIRAI MR16-09 Leg1 Sea-surface Photosynthetically Active Radiation (PAR)

Last Modified: 2017-11-09

[ReadMe](#) [Observation Data](#) [Data Format](#)

Cruise ID: [MR16-09 Leg1](#)

Sea-surface Photosynthetically Active Radiation (PAR) Raw

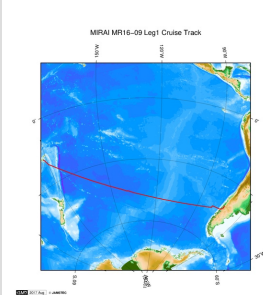
Data Policy: [JAMSTEC](#)

Sea-surface PAR (MR15-01-)

Comma Separated Value

Column No.	Content	Remarks
1	DATE	Year, Month Day [YYYYMMDD]
2	TIME	Hour, Minute, Second [hhmmss]
3	PAR	PAR (Variable length, Floating-point, Exponential Form) [microEinsteins/cm ² /sec]
4	UV(305nm)	Ultraviolet Irradiance;305nm (Variable length, Floating-point, Exponential Form) [microW/cm ² /nm]
5	UV(320nm)	Ultraviolet Irradiance;320nm (Variable length, Floating-point, Exponential Form) [microW/cm ² /nm]
6	UV(340nm)	Ultraviolet Irradiance;340nm (Variable length, Floating-point, Exponential Form) [microW/cm ² /nm]
7	UV(380nm)	Ultraviolet Irradiance;380nm (Variable length, Floating-point, Exponential Form) [microW/cm ² /nm]

Related Information



[Enlarge Image](#)

MR16-09 Leg1

Ship Name: MIRAI

Period: 2016-12-26 ~ 2017-01-17

Chief Scientist: Akihiko Murata (JAMSTEC)

Proposal ▶ Ship-borne measurements of aerosols in the marine atmosphere: Investigation of potential influence of marine aerosol particles on the climate;

Update History

2017-11-09	An observation data was registered.
2017-07-31	An observation data was registered.

JAMSTEC
[Site Policy](#)
[Privacy Policy](#)
[Application for Data and Samples](#)
[Data Policy](#)
What's New
[Update History](#)
[Feeds](#)

Lists
[Publication List](#)
[Amount of Public Info.](#)
Data
[Map Search](#)
[Data Tree](#)
[Detailed Search](#)

Information of the Ships
[NATSUSHIMA](#)
[KAIYO](#)
[YOKOSUKA](#)
[MIRAI](#)
[KAIREI](#)
[CHIKYU](#)
[KAIMEI](#)
[SHINSEI MARU](#)
[HAKUHO MARU](#)

Information of the Submersibles
[KAIKO](#)
[SHINKAI 2000](#)
[SHINKAI 6500](#)
[DEEP TOW](#)
[HYPER-DOLPHIN](#)
[URASHIMA](#)
[YOKOSUKA DEEP TOW](#)
[6K Camera DEEP TOW](#)
[6K Sonar DEEP TOW](#)
[KM-ROV](#)
[POWER GRAB SAMPLER \(SHELL\)](#)
[POWER GRAB SAMPLER \(CLOW\)](#)
[BMS](#)

Go to a Cruise Information

Cruise ID:

Go to a Dive Information

Dive ID:

MIRAI MR16-09 Leg1 Sea-surface Photosynthetically Active Radiation (PAR)

Last Modified: 2017-11-09

[ReadMe](#) [Observation Data](#) [Data Format](#)

Cruise ID: [MR16-09 Leg1](#)

Sea-surface Photosynthetically Active Radiation (PAR) : Raw

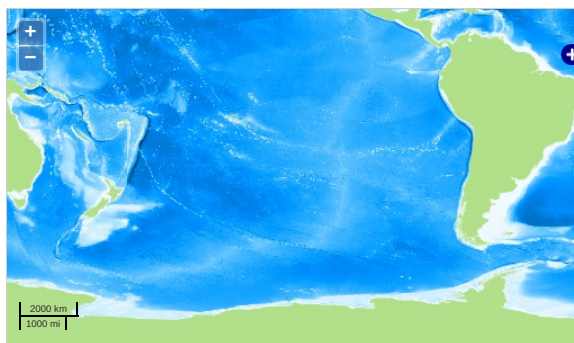
Data Policy: [JAMSTEC](#)

Observation Items: PAR

Science Keywords:

OCEANS > OCEAN OPTICS > PHOTOSYNTHETICALLY ACTIVE RADIATION

Observation Map



— ... Observation Line — ... Navigation ● ... Observation, Dive Point, Hole

Imagery reproduced from ...

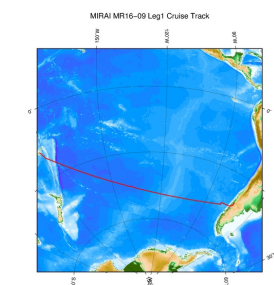
Data List

[Add to Basket](#)

File names

<input type="checkbox"/>	PAR_20161228.txt
<input type="checkbox"/>	PAR_20161229.txt
<input type="checkbox"/>	PAR_20161230.txt
<input type="checkbox"/>	PAR_20161231.txt
<input type="checkbox"/>	PAR_20170101.txt
<input type="checkbox"/>	PAR_20170102.txt
<input type="checkbox"/>	PAR_20170103.txt
<input type="checkbox"/>	PAR_20170104.txt
<input type="checkbox"/>	PAR_20170105.txt
<input type="checkbox"/>	PAR_20170106.txt
<input type="checkbox"/>	PAR_20170107.txt
<input type="checkbox"/>	PAR_20170108.txt
<input type="checkbox"/>	PAR_20170109.txt
<input type="checkbox"/>	PAR_20170110.txt
<input type="checkbox"/>	PAR_20170111.txt
<input type="checkbox"/>	PAR_20170112.txt
<input type="checkbox"/>	PAR_20170113.txt
<input type="checkbox"/>	PAR_20170114.txt
<input type="checkbox"/>	PAR_20170115.txt

Related Information



[Enlarge Image](#)

MR16-09 Leg1

Ship Name: MIRAI

Period: 2016-12-26 - 2017-01-17

Chief Scientist: Akihiko Murata (JAMSTEC)

Proposal ▶ Ship-borne measurements of aerosols in the marine atmosphere: Investigation of potential influence of marine aerosol particles on the climate;

Update History

2017-11-09	An observation data was registered.
2017-07-31	An observation data was registered.

JAMSTEC

Site Policy
Privacy Policy
Application for Data and
Samples
Data Policy

What's New
Update History
Feeds

Lists

Publication List
Amount of Public Info.

Data

Map Search
Data Tree
Detailed Search

Information of the Ships

NATSUSHIMA
KAIYO
YOKOSUKA
MIRAI
KAIREI
CHIKYU
KAIMEI
SHINSEI MARU
HAKUHO MARU

Information of the
Submersibles

KAIKO
SHINKAI 2000
SHINKAI 6500
DEEP TOW
HYPER-DOLPHIN
URASHIMA
YOKOSUKA DEEP TOW
6K Camera DEEP TOW
6K Sonar DEEP TOW
KM-ROV
POWER GRAB SAMPLER
(SHELL)
POWER GRAB SAMPLER
(CLOW)
BMS

Go to a Cruise Information

Cruise ID:

Go to a Dive Information

Dive ID:

Copyright 2011 Japan Agency for Marine-Earth Science and
Technology



JAMSTEC

国立研究開発法人
海洋研究開発機構
JAPAN AGENCY FOR MARINE-EARTH SCIENCE AND TECHNOLOGY