

KAIMEI KM17-09 Marine Meteorology

Last Modified: 2021-02-18

[ReadMe](#) [Observation Data](#) [Data Format](#)

Cruise ID: **KM17-09**

Marine Meteorology: Processed (DMO)-Corrected

Data Policy: **JAMSTEC**

Observation Items: Atmospheric pressure, Air temperature, Dew point temperature, Relative humidity, Sea surface temperature, Zonal and meridional wind component, Precipitation, Shortwave radiation, Longwave radiation

Science Keywords:

ATMOSPHERE > ATMOSPHERIC PRESSURE > SEA LEVEL PRESSURE
ATMOSPHERE > ATMOSPHERIC RADIATION > LONGWAVE RADIATION
ATMOSPHERE > ATMOSPHERIC RADIATION > SHORTWAVE RADIATION
ATMOSPHERE > ATMOSPHERIC TEMPERATURE > AIR TEMPERATURE
ATMOSPHERE > ATMOSPHERIC WATER VAPOR > DEW POINT TEMPERATURE
ATMOSPHERE > ATMOSPHERIC WATER VAPOR > HUMIDITY
ATMOSPHERE > PRECIPITATION
OCEANS > OCEAN TEMPERATURE > SEA SURFACE TEMPERATURE
OCEANS > OCEAN WAVES > SIGNIFICANT WAVE HEIGHT
OCEANS > OCEAN WINDS > SURFACE WINDS

Cruise Report

http://www.godac.jamstec.go.jp/catalog/data/doc_catalog/media/KM17-09_all.pdf

For Using Data

Principal Investigator

Data Management Office

Use Constraints

See [Terms and Conditions](#) about constrain of use.

Data Citation

See [Terms and Conditions](#) about data citation.

Period (UTC)

2017-09-13 00:00 – 2017-09-22 00:30

Instrument

Instrument:

General maritime meteorological observation system

Instrument:

Sea surface radiometer



Overview

The data provided here is a set of "suitably composed data" which consists of 10-minute-average corrected Atmospheric Pressure, Air Temperature, Relative Humidity, Wind Direction and Speed, Precipitation, Radiation, Sea Surface Temperature, and Wave Height observed by R/V KAIMEI. See [here](#) for detailed correction and processing method.

Specifications

Sensors	Type	Manufacturer	Location (from sea surface)
Anemometer	WMT700	Vaisala, Finland	Foremast (23m), Compass deck (28m)
Tair/RH	HMP155	Vaisala, Finland with DTR13 radiation shield Vaisala, Finland	Foremast (23m), Compass deck (28m)
Barometer	PTB330	Vaisala, Finland	Navigation bridge deck (15m)
Rain gauge	50202	R.M. Young, USA	Compass deck (18m)
Radiometer (shortwave)	CMP-22	Kipp & Zonen, The Netherlands	Foremast (22m)
Radiometer (long-wave)	CGR-4	Kipp & Zonen, The Netherlands	Foremast (22m)
Wave height meter	PR-002	MIROS, Norway	Radar mast (23m)
Thermometer (SST)	SBE38	Sea-Bird Electronics, USA	Bow thruster room (-3m)
Sea surface radiometer (SSST)	ROSR1	Remote Measurement & Research Co., USA	Foremast (21m)

Sensors information

Tair/RH sensor calibration date

Foremast : 2015/5/15

Compass deck : 2015/5/15

Need raw data?

Sea surface radiometer data was also collected in this cruise, but we have no plan to process the sea surface radiometer data.

If you would like the raw data set, please contact us from "Contact Us" above.

Note

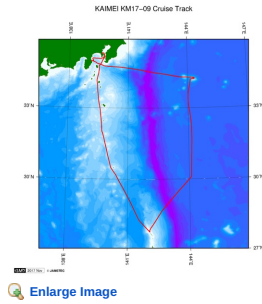
During this cruise, rainfall intensity data are invalid due to the system maintenance.

Related Information

[Cruise Data](#) [Dive Data](#)

KM17-09

Ship Name: KAIMEI
Period: 2017-09-13 - 2017-09-22
Chief Scientist: Masanobu Yanagitani (JAMSTEC)



Update History

Date	Description
2021-02-18	An observation data was registered.

JAMSTEC

[Site Policy](#)
[Privacy Policy](#)
[Application for Data and Samples](#)
[Data Policy](#)

[What's New](#)
[Update History](#)
[Feeds](#)

Lists

[Publication List](#)
[Amount of Public Info.](#)

Data

[Map Search](#)
[Data Tree](#)
[Detailed Search](#)

Information of the Ships

[NATSUSHIMA](#)
[KAIYO](#)
[YOKOSUKA](#)
[MIRAI](#)
[KAIREI](#)
[CHIKYU](#)
[KAIMEI](#)
[SHINSEI MARU](#)
[HAKUHO MARU](#)

Information of the Submersibles

[KAIKO](#)
[SHINKAI 2000](#)
[SHINKAI 6500](#)
[DEEP TOW](#)
[HYPER-DOLPHIN](#)
[URASHIMA](#)
[YOKOSUKA DEEP TOW](#)
[6K Camera DEEP TOW](#)
[6K Sonar DEEP TOW](#)
[KM-ROV](#)
[POWER GRAB SAMPLER \(SHELL\)](#)
[POWER GRAB SAMPLER \(CLOW\)](#)
[BMS](#)

Go to a Cruise Information

Cruise ID:

Go to a Dive Information

Dive ID:

Copyright 2011 Japan Agency for Marine-Earth Science and Technology



JAMSTEC

国立研究開発法人
海洋研究開発機構
JAPAN AGENCY FOR MARINE-EARTH SCIENCE AND TECHNOLOGY

KAIMEI KM17-09 Marine Meteorology

Last Modified: 2021-02-18

[ReadMe](#) [Observation Data](#) [Data Format](#)

Cruise ID: [KM17-09](#)

Marine Meteorology: Processed (DMO)-Corrected

Data Policy: [JAMSTEC](#)

Meteorology Corrected (KAIMEI)

The one record of this data has 125 bytes of data part and 7 bytes of flag part.

Single space separated.

No.	Column	Content	Unit	format (nodata or baddata)	Remarks
1	1-12	Date and time [YYYYMMDDhhmm]		i12	Every 10 minutes* * Time stamp is set at the end of average
2	14-21	Julian day [DDD.DDDD]		f8.4	Every 10 minutes*
3	23-29	Longitude [0 to 360]	degree	f7.3 (999.999)	Location at time stamp East longitude
4	31-37	Latitude [-90 to 90]	degree	f7.3 (999.999)	Location at time stamp +: North latitude -: South latitude
5	39-44	Atmospheric pressure	hPa	f6.1 (9999.9)	10-minute mean*
6	46-50	Air temperature	deg-C	f5.1 (999.9)	10-minute mean*
7	52-56	Dewpoint temperature	deg-C	f5.1 (999.9)	10-minute mean* Calculated from 'Air temperature' and 'Relative humidity' using WMO's Formula(**) for liquid water ** WMO-No.8 (Guide to Meteorological Instruments and Methods of Observation)
8	58-62	Relative humidity	%	f5.1 (999.9)	10-minute mean*
9	64-70	Sea surface temperature (SST)	deg-C	f7.4 (99.9999)	10-minute mean* From TSG
10	72-76	Wind speed (zonal)	m/sec	f5.1 (999.9)	10-minute mean* No anemometer height adjustment
11	78-82	Wind speed (meridional)	m/sec	f5.1 (999.9)	10-minute mean* No anemometer height adjustment
12	84-89	Rainfall intensity	mm/hr	f6.2 (999.99)	10-minute mean*
13	91-96	Shortwave radiation	W/m2	f6.1 (9999.9)	10-minute mean*
14	98-102	Long-wave radiation	W/m2	f5.1 (999.9)	10-minute mean*
15	104-108	Significant wave height	m	f5.2 (99.99)	10-minute mean*
16	110-114	Wave period	second	f5.2 (99.99)	10-minute mean*
17	116-119	Relative wind speed	m/sec	f4.1 (99.9)	10-minute mean* No anemometer height adjustment
18	121-123	Relative wind direction	degree	i3 (999)	10-minute mean* No anemometer height adjustment

Flag part

No.	Column	Description	Format	Remarks
19	125	Flag 1	i1	QC flag for 'Atmospheric pressure'
20	126	Flag 2	i1	QC flag for 'Air temperature' and 'Relative humidity'
21	127	Flag 3	i1	QC flag for 'Wind speed'
22	128	Flag 4	i1	QC flag for 'Rainfall intensity'
23	129	Flag 5	i1	QC flag for 'Shortwave radiation'
24	130	Flag 6	i1	QC flag for 'Long-wave radiation'
25	131	Flag 7	i1	QC flag for 'Significant wave height' and 'Wave period'

Definition of Quality Control Flags

Flag 1 : Atmospheric pressure

- 0 - accepted
- 4 - questionable
- 8 - bad (system error or non-use)

Flag 2 : Air temperature and Relative humidity

- 0 - accepted
- 4 - questionable
- 8 - bad (system error or non-use)

Flag 3 : Wind speed

- 0 - accepted
- 4 - questionable
- 8 - bad (system error or non-use)

Flag 4 : Rainfall intensity

- 0 - accepted
- 4 - questionable

8 - bad (system error or non-use)

Flag 5 : Shortwave radiation

0 - accepted

4 - questionable

8 - bad (system error or non-use)

Flag 6 : Long-wave radiation

0 - accepted

4 - questionable

8 - bad (system error or non-use)

Flag 7 : Significant wave height and period

0 - accepted

4 - questionable

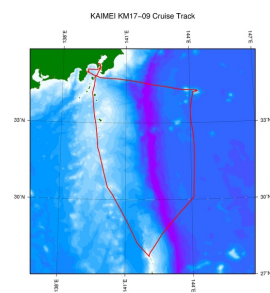
8 - bad (system error or non-use)

Data Example

YYYYMMDDhhmm	DDD.DDDD	Lon	Lat	Press	AT	DT	RH	SST	WindU	WindV	Rain	SWR	LWR	WH	WP	RWS	RWD	QualityFlag
201806260400	177.1667	139.679	35.419	9999.9	999.9	999.9	999.9	99.9999	999.9	999.99	999.99	999.99	99.99	99.99	99.99	99.99	999	8888888
201806260410	177.1736	139.681	35.420	1014.2	27.2	20.6	65.9	99.9999	-0.2	5.9	0.00	932.0	396.0	99.99	99.99	5.8	285	0000008
201806260420	177.1806	139.684	35.421	1014.1	26.3	20.9	70.9	99.9999	-0.7	7.1	0.00	916.0	394.0	99.99	99.99	5.8	298	0000008
201806260430	177.1875	139.696	35.415	1013.7	25.4	21.3	76.7	99.9999	-0.5	9.5	0.00	860.0	393.0	99.99	99.99	11.1	37	0000008

Related Information

☒ Cruise Data ☐ Dive Data



[Enlarge Image](#)

KM17-09

Ship Name: KAI MEI

Period: 2017-09-13 - 2017-09-22

Chief Scientist: Masanobu Yanagitani (JAMSTEC)

Update History

2021-02-18

An observation data was registered.

JAMSTEC

Site Policy

Privacy Policy

Application for Data and Samples

Data Policy

What's New

Update History

Feeds

Lists

Publication List

Amount of Public Info.

Data

Map Search

Data Tree

Detailed Search

Information of the Ships

NATSUSHIMA

KAIYO

YOKOSUKA

MIRAI

KAIREI

CHIKYU

KAI MEI

SHINSEI MARU

HAKUHO MARU

Information of the Submersibles

KAIKO

SHINKAI 2000

SHINKAI 6500

DEEP TOW

HYPER-DOLPHIN

URASHIMA

YOKOSUKA DEEP TOW

6K Camera DEEP TOW

6K Sonar DEEP TOW

KM-ROV

POWER GRAB SAMPLER

(SHELL)

POWER GRAB SAMPLER

(CLOW)

BMS

Go to a Cruise Information

Cruise ID:

Go

Go to a Dive Information

Dive ID:

Go

Copyright 2011 Japan Agency for Marine-Earth Science and Technology



JAMSTEC

国立研究開発法人
海洋研究開発機構
JAPAN AGENCY FOR MARINE-EARTH SCIENCE AND TECHNOLOGY

KAIMEI KM17-09 Marine Meteorology

Last Modified: 2021-02-18

[ReadMe](#) [Observation Data](#) [Data Format](#)

Cruise ID: **KM17-09**

Marine Meteorology: Processed (DMO)-Corrected

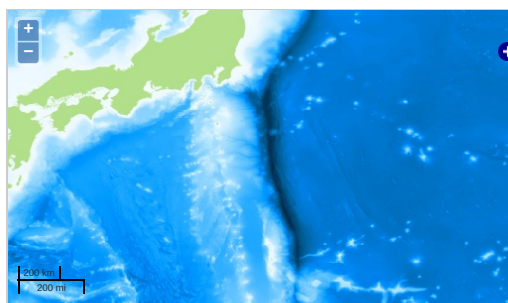
Data Policy: **JAMSTEC**

Observation Items: Atmospheric pressure, Air temperature, Dew point temperature, Relative humidity, Sea surface temperature, Zonal and meridional wind component, Precipitation, Shortwave radiation, Longwave radiation

Science Keywords:

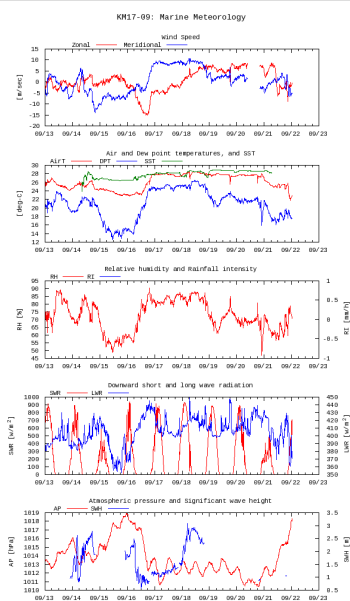
ATMOSPHERE	> ATMOSPHERIC PRESSURE	> SEA LEVEL PRESSURE
ATMOSPHERE	> ATMOSPHERIC RADIATION	> LONGWAVE RADIATION
ATMOSPHERE	> ATMOSPHERIC RADIATION	> SHORTWAVE RADIATION
ATMOSPHERE	> ATMOSPHERIC TEMPERATURE	> AIR TEMPERATURE
ATMOSPHERE	> ATMOSPHERIC WATER VAPOR	> DEW POINT TEMPERATURE
ATMOSPHERE	> ATMOSPHERIC WATER VAPOR	> HUMIDITY
ATMOSPHERE	> PRECIPITATION	
OCEANS	> OCEAN TEMPERATURE	> SEA SURFACE TEMPERATURE
OCEANS	> OCEAN WAVES	> SIGNIFICANT WAVE HEIGHT
OCEANS	> OCEAN WINDS	> SURFACE WINDS

Observation Map



— ... Observation Line — ... Navigation ● ... Observation, Dive Point, Hole

Figures



Data List

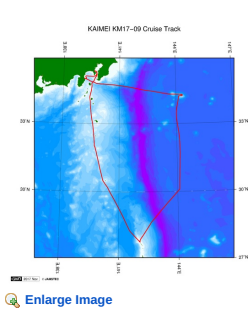
[Add to Basket](#)

File names

☐ KM17-09.dat

Related Information

[Cruise Data](#) [Dive Data](#)



KM17-09
Ship Name: KAIMEI
Period: 2017-09-13 - 2017-09-22
Chief Scientist: Masanobu Yanagitani (JAMSTEC)

Update History

2021-02-18	An observation data was registered.
------------	-------------------------------------

JAMSTEC

Site Policy
Privacy Policy
Application for Data and Samples
Data Policy
What's New
Update History
Feeds

Lists
Publication List
Amount of Public Info.
Data
Map Search
Data Tree
Detailed Search

Information of the Ships
NATSUSHIMA
KAIYO
YOKOSUKA
MIRAI
KAIREI
CHIKYU
KAIMEI
SHINSEI MARU
HAKUHO MARU

Information of the Submersibles
KAIKO
SHINKAI 2000
SHINKAI 6500
DEEP TOW
HYPER-DOLPHIN
URASHIMA
YOKOSUKA DEEP TOW
6K Camera DEEP TOW
6K Sonar DEEP TOW
KM-ROV
POWER GRAB SAMPLER (SHELL)
POWER GRAB SAMPLER (CLOW)
BMS

Go to a Cruise Information

Cruise ID:

Go to a Dive Information

Dive ID: