

MIRAI MR10-03 Leg2 Bottle Sampling Water Chemical Analysis

Last Modified: 2015-05-29

[ReadMe](#) [Observation Data](#) [Data Format](#) [Quality Information](#)

Cruise ID: [MR10-03 Leg2](#)

Bottle Sampling Water Chemical Analysis: Processed (PI)

Data Policy: [JAMSTEC](#)

Observation Items: Temperature, Salinity, Dissolved oxygen, Density

Science Keywords:

OCEANS > OCEAN CHEMISTRY > OXYGEN
OCEANS > OCEAN CHEMISTRY > SALINITY
OCEANS > OCEAN TEMPERATURE > WATER TEMPERATURE
OCEANS > SALINITY/DENSITY > SALINITY
OCEANS > OCEAN TEMPERATURE > SEA SURFACE TEMPERATURE

Cruise Report

http://www.godac.jamstec.go.jp/catalog/data/doc_catalog/media/MR10-03_leg1-2_all.pdf

For Using Data

Principal Investigator

CTDTMP Hiroyuki Yamada (JAMSTEC)
CTDSAL Hiroyuki Yamada (JAMSTEC)
SALNTY Hiroyuki Yamada (JAMSTEC)
CTDOXY Hiroyuki Yamada (JAMSTEC)
OXYGEN Hiroyuki Yamada (JAMSTEC)

Use Constraints

See [Terms and Conditions](#) about constrain of use.

Data Citation

See [Terms and Conditions](#) about data citation.

Instrument

Instrument:

Salinity measurement system



Instrument:

Titration for DO (- MR11-05 Leg2)



Notice

- Temperature data measured by a mercury thermometer is listed in CTDTMP column at SAMPNO 0 which means sampled by bucket. Please notice that this data is different from other data in format (f9.1) and instrument.
- 28 Feb. 2014 The data flag of SAMPNO 0 are added sampled by bucket.

Information on CTD data

(1) Temperature sensor

Model : SBE3, Sea-Bird Electronics, Inc.
Measurement range : -5.0 to +35degC
Accuracy : 0.001degC
Resolution : 0.0002degC

(2) Salinity sensor

Model : SBE4, Sea-Bird Electronics, Inc.
Measurement range : 0.0 to 7S/m
Accuracy : 0.0003S/m
Resolution : 0.00004S/m

(3) Pressure sensor

Model : SBE9plus, Sea-Bird Electronics, Inc.
Measurement range : up to 10500m
Accuracy : 0.015%F.S.
Resolution : 0.001%F.S.

(4) DO sensor

Model : SBE43, Sea-Bird Electronics, Inc.
Measurement range : 0-15ml/l
Accuracy : 0.1ml/l
Resolution : 0.01ml/l

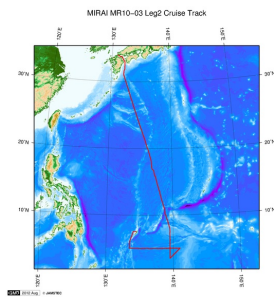
Information on Chemical and Biological data

1. Dissolved Oxygen

- (1) Instruments : Burette: APB-510 manufactured by Kyoto Electronic Co. Ltd. / 10 cm³ of titration vessel
Detector and Software: Automatic photometric titrator manufactured by Kimoto Electronic Co. Ltd
- (2) Methods : Winkler method/photometric methods
- (3) Precision : 0.09 umol kg⁻¹
- (4) Reference Material/Calibration : 0.001667M KIO₃ solution

2. Salinity

- (1) Instruments : Autosol salinometer model 8400B (Guildline Instruments Ltd.)
- (2) Methods : -
- (3) Precision : 0.0002 PSU
- (4) Reference Material/Calibration : IAPSO Standard Sea Water batch P151 (Ocean Scientific International Ltd.)



[Enlarge Image](#)

MR10-03 Leg2

Ship Name: MIRAI

Period: 2010-05-13 - 2010-06-27

Chief Scientist: Hiroyuki Yamada (JAMSTEC)

Project Name: [MJO Research]

Proposal ▶ Observational Study on Air-Sea Interaction in the Tropical Western Pacific Ocean

Title:

Update History

2015-05-29	An observation data was registerd.
2014-02-28	An observation data was registerd.
2013-10-12	An observation data was registerd.
2013-08-29	An observation data was registerd.
2012-11-30	An observation data was registerd.

JAMSTEC

[Site Policy](#)
[Privacy Policy](#)
[Application for Data and Samples](#)
[Data Policy](#)

[What's New](#)
[Update History](#)
[Feeds](#)

Lists

[Publication List](#)
[Amount of Public Info.](#)

[Data](#)
[Map Search](#)
[Data Tree](#)
[Detailed Search](#)

Information of the Ships

[NATSUSHIMA](#)
[KAIYO](#)
[YOKOSUKA](#)
[MIRAI](#)
[KAIREI](#)
[CHIKYU](#)
[KAIMEI](#)
[SHINSEI MARU](#)
[HAKUHO MARU](#)

Information of the Submersibles

[KAIKO](#)
[SHINKAI 2000](#)
[SHINKAI 6500](#)
[DEEP TOW](#)
[HYPER-DOLPHIN](#)
[URASHIMA](#)
[YOKOSUKA DEEP TOW](#)
[6K Camera DEEP TOW](#)
[6K Sonar DEEP TOW](#)
[KM-ROV](#)
[POWER GRAB SAMPLER \(SHELL\)](#)
[POWER GRAB SAMPLER \(CLOW\)](#)
[BMS](#)

Go to a Cruise Information

Cruise ID:

Go to a Dive Information

Dive ID:

Copyright 2011 Japan Agency for Marine-Earth Science and Technology



JAMSTEC 国立研究開発法人
海洋研究開発機構
JAPAN AGENCY FOR MARINE-EARTH SCIENCE AND TECHNOLOGY

MIRAI MR10-03 Leg2 Bottle Sampling Water Chemical Analysis

Last Modified: 2015-05-29

[ReadMe](#) [Observation Data](#) [Data Format](#) [Quality Information](#)

Cruise ID: [MR10-03 Leg2](#)

Bottle Sampling Water Chemical Analysis: Processed (PI)

Data Policy: [JAMSTEC](#)

Exchange Format

Provided in the Exchange Format of CCHDO (CLIVAR and Carbon Hydrographic Data Office).

Please see the following link for details of Exchange Format.

[CCHDO | CLIVAR & Carbon Hydrographic Data Office](#)

Format Information

Column No.	Column Heading Mnemonic	Units Mnemonic	Reporting Precision FORTRAN Format	Comments
1	EXPCODE		A14	Expedition code
2	SECT		A6	For WOCE data the WHP section identifier
3	STNNBR		A6	Station number
4	CASTNO		I3	Cast number
5	SAMPNO		A7	Sample number
6	BTLNBR		A7	Bottle identification number
7	BTLNBR_FLAG_W		I1	Bottle quality flag
8	DATE		I8	Cast date(UTC)
9	TIME	UTC	I4	Cast time (UTC)
10	LATITUDE	DEG	F8.3	LATITUDE
11	LONGITUDE	DEG	F9.3	LONGITUDE
12	DEPTH	M	I5	Reported depth to bottom.
13	CTDPRS	DBAR	F9.1	Pressure
14	CTDPRS_FLAG_W		I1	Quality flag for CTD data
15	CTDTMP	ITS-90	F9.4	Temperature
16	CTDTMP_FLAG_W		I1	Quality flag for CTD data
17	CTDSAL	PSS-78	F9.4	CTD Salinity sensor
18	CTDSAL_FLAG_W		I1	Quality flag for CTD data
19	SALNTY	PSS-78	F9.4	Salinity
20	SALNTY_FLAG_W		I1	Quality flags for water samples
21	CTDOXY	UMOL/KG	F9.2	CTD Oxygen sensor
22	CTDOXY_FLAG_W		I1	Quality flag for CTD data
23	OXYGEN	UMOL/KG	F9.2	Oxygen
24	OXYGEN_FLAG_W		I1	Quality flags for water samples
25	SIG0	KG/CUM	F9.4	Density

ODV Format

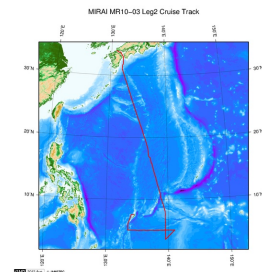
Please see the following link for details of ODV Format and ODV Software.

[Ocean Data View \(ODV\)](#)

Format Information

Column No.	Column Heading	Comments
1	Cruise	Cruise Label
2	Station	Station number_Cast number
3	Type	Station type
4	mon/day/yr	Cast date(UTC)
5	hh:mm	Cast time (UTC)
6	Latitude [degrees_north]	LATITUDE
7	Longitude [degrees_east]	LONGITUDE
8	Bot. Depth [m]	Reported depth to bottom.
9	CTDDPT[M]	Depth(Calculate from CTDPRS and LATITUDE)
10	QF	Quality flag for CTD data
11	CTDPRS[DBAR]	Pressure
12	QF	Quality flag for CTD data
13	CTDTMP[ITS-90]	Temperature
14	QF	Quality flag for CTD data
15	CTDSAL[PSS-78]	CTD Salinity sensor
16	QF	Quality flag for CTD data
17	SALNTY[PSS-78]	Salinity
18	QF	Quality flags for water samples
19	CTDOXY[UMOL/KG]	CTD Oxygen sensor
20	QF	Quality flag for CTD data
21	OXYGEN[UMOL/KG]	Oxygen
22	QF	Quality flags for water samples
23	SIG0[KG/CUM]	Density
24	QF	Quality flag for CTD data
25	SAMPNO	Sample number
26	QF	Bottle quality flag

Related Information



[Enlarge Image](#)

MR10-03 Leg2

Ship Name: MIRAI
Period: 2010-05-13 - 2010-06-27
Chief Scientist: Hiroyuki Yamada (JAMSTEC)
Project Name: [MJO Research]
Proposal ▶ Observational Study on Air-Sea Interaction in the Tropical Western Pacific Ocean
Title:

Update History

2015-05-29	An observation data was registerd.
2014-02-28	An observation data was registerd.
2013-10-12	An observation data was registerd.
2013-08-29	An observation data was registerd.
2012-11-30	An observation data was registerd.

JAMSTEC
[Site Policy](#)
[Privacy Policy](#)
[Application for Data and Samples](#)
[Data Policy](#)
What's New
[Update History](#)
[Feeds](#)

Lists
[Publication List](#)
[Amount of Public Info.](#)
Data
[Map Search](#)
[Data Tree](#)
[Detailed Search](#)

Information of the Ships
[NATSUSHIMA](#)
[KAIYO](#)
[YOKOSUKA](#)
[MIRAI](#)
[KAIREI](#)
[CHIKYU](#)
[KAIMEI](#)
[SHINSEI MARU](#)
[HAKUHO MARU](#)

Information of the Submersibles
[KAIKO](#)
[SHINKAI 2000](#)
[SHINKAI 6500](#)
[DEEP TOW](#)
[HYPER-DOLPHIN](#)
[URASHIMA](#)
[YOKOSUKA DEEP TOW](#)
[6K Camera DEEP TOW](#)
[6K Sonar DEEP TOW](#)
[KM-ROV](#)
[POWER GRAB](#)
[SAMPLER \(SHELL\)](#)
[POWER GRAB](#)
[SAMPLER \(CLOW\)](#)
[BMS](#)

Go to a Cruise Information

Cruise ID:

Go to a Dive Information

Dive ID:

Copyright 2011 Japan Agency for Marine-Earth Science and Technology

 **JAMSTEC** 国立研究開発法人
海洋研究開発機構
JAPAN AGENCY FOR MARINE-EARTH SCIENCE AND TECHNOLOGY

MIRAI MR10-03 Leg2 Bottle Sampling Water Chemical Analysis

Last Modified: 2015-05-29

[ReadMe](#) [Observation Data](#) [Data Format](#) [Quality Information](#)

Cruise ID: [MR10-03 Leg2](#)

Bottle Sampling Water Chemical Analysis: Processed (PI)

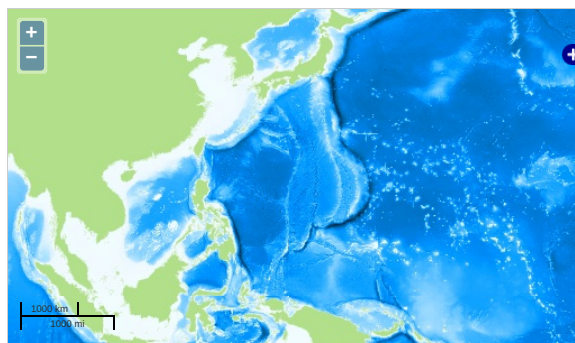
Data Policy: [JAMSTEC](#)

Observation Items: Temperature, Salinity, Dissolved oxygen, Density

Science Keywords:

OCEANS > OCEAN CHEMISTRY > OXYGEN
OCEANS > OCEAN CHEMISTRY > SALINITY
OCEANS > OCEAN TEMPERATURE > WATER TEMPERATURE
OCEANS > SALINITY/DENSITY > SALINITY
OCEANS > OCEAN TEMPERATURE > SEA SURFACE TEMPERATURE

Observation Map



Imagery reproduced from ...

... Observation Line ... Navigation ... Observation, Dive Point, Hole

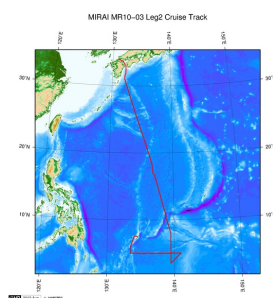
Data List

☐ File names

☐ MR100302_ex_bot.csv

☐ MR100302_odv_bot.txt

Related Information



[Enlarge Image](#)

MR10-03 Leg2

Ship Name: MIRAI

Period: 2010-05-13 - 2010-06-27

Chief Scientist: Hiroyuki Yamada (JAMSTEC)

Project Name: [MJO Research]

Proposal ▶ Observational Study on Air-Sea Interaction in the Tropical Western Pacific Ocean

Title:

Update History

2015-05-29	An observation data was registerd.
2014-02-28	An observation data was registerd.
2013-10-12	An observation data was registerd.
2013-08-29	An observation data was registerd.
2012-11-30	An observation data was registerd.

JAMSTEC
[Site Policy](#)
[Privacy Policy](#)
[Application for Data and Samples](#)
[Data Policy](#)
What's New
[Update History](#)
[Feeds](#)

Lists
[Publication List](#)
[Amount of Public Info.](#)
Data
[Map Search](#)
[Data Tree](#)
[Detailed Search](#)

Information of the Ships
[NATSUSHIMA](#)
[KAIYO](#)
[YOKOSUKA](#)
[MIRAI](#)
[KAIREI](#)
[CHIKYU](#)
[KAIMEI](#)
[SHINSEI MARU](#)
[HAKUHO MARU](#)

Information of the Submersibles
[KAIKO](#)
[SHINKAI 2000](#)
[SHINKAI 6500](#)
[DEEP TOW](#)
[HYPER-DOLPHIN](#)
[URASHIMA](#)
[YOKOSUKA DEEP TOW](#)
[6K Camera DEEP TOW](#)
[6K Sonar DEEP TOW](#)
[KM-ROV](#)
[POWER GRAB SAMPLER \(SHELL\)](#)
[POWER GRAB SAMPLER \(CLOW\)](#)
[BMS](#)

Go to a Cruise Information

Cruise ID:

Go to a Dive Information

Dive ID:

