

MIRAI MR00-K02 Cloud Ceiling

Last Modified: 2014-07-12

[ReadMe](#) [Observation Data](#) [Data Format](#)

Cruise ID: [MR00-K02](#)

Cloud Ceiling: Raw

Data Policy: [JAMSTEC](#)

Observation Items: Cloud base height

Science Keywords:

ATMOSPHERE > CLOUDS > CLOUD
BASE

For Using Data

Principal Investigator

Data Management Office

Use Constraints

See [Terms and Conditions](#) about constrain of use.

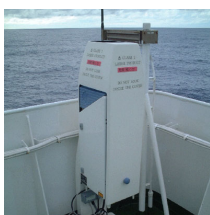
Data Citation

See [Terms and Conditions](#) about data citation.

Instrument

Instrument:

Ceiliometer (- MR12-05Leg3)



Overview

Ceiliometer is the system that measures cloud base height by laser pulse emitted vertically.

Up to three levels of cloud base can be detected by measuring the change of strength of backscatter signal.

And the cloud base height is calculated from the elapsed time from laser pulse emission to backscatter detection.

In case the cloud base is obscured, it measures the vertical visibility.

System

Manufacturer: Vaisala Inc.
Type: CT25K Ver2.01
Serial number: T18102
Measurement range: up to 7500m
Resolution: 15m
Sampling rate: 15-120 seconds available (60sec as default)
Accuracy: $\pm 2\%$ or $\pm 1/2 \times \text{Resolution}$
Location: Compass deck bow side (18 meters high from sea surface)
Recording software: CT-VIEW Ver1.05 (before MR01-K04)
CT-VIEW Ver2.10 (MR01-K05 or later)

Note

(1) File naming rule for CYMMDDHH.DAT(Ver1.05) and AYMMDH.DAT(Ver2.10).

C or A : Fixed as 'C' or 'A'

Y : Year in 1 digit

MM : Recording start month (UTC)

DD : Recording start day (UTC)

HH : Recording start time (UTC)

(2) Adjustment for the height : No sea surface level adjustment is applied to the raw data.

(3) Invalid data information : Ceiliometer data files include the invalid data in this cruise as follows.

Date/Time : Date,Time data is invalid

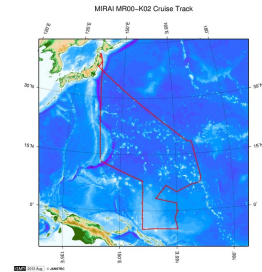
Format : Format error data

DataLack : Lack of data

Start Stop

File name	Date,Time	File name	Date,Time	Remarks
C0021711.DAT20000217,123409-C0021723.DAT20000217,231505				DataLack
C0021917.DAT20000219,174347-C0022223.DAT20000223,034510				DataLack
C0030323.DAT20000304,023026-C0030402.DAT20000304,023226				DataLack
C0031620.DAT20000316,204212-C0032013.DAT20000320,135037				DataLack

Related Information



[Enlarge Image](#)

MR00-K02

Ship Name: MIRAI
Period: 2000-02-12 - 2000-03-25
Chief Scientist: Yoshifumi Kuroda (JAMSTEC)
Project Name: [Tropical Ocean Climate Study (TOCS)]

Update History

2014-07-12	An observation data was registerd.
2012-12-25	An observation data was registerd.

JAMSTEC
Site Policy
Privacy Policy
Application for Data and Samples
Data Policy
What's New
Update History
Feeds

Lists
Publication List
Amount of Public Info.

Data
Map Search
Data Tree
Detailed Search

Information of the Ships
NATSUSHIMA
KAIYO
YOKOSUKA
MIRAI
KAIREI
CHIKYU
KAIMEI
SHINSEI MARU
HAKUHO MARU

Information of the Submersibles
KAIKO
SHINKAI 2000
SHINKAI 6500
DEEP TOW
HYPER-DOLPHIN
URASHIMA
YOKOSUKA DEEP TOW
6K Camera DEEP TOW
6K Sonar DEEP TOW
KM-ROV
POWER GRAB
SAMPLER (SHELL)
POWER GRAB
SAMPLER (CLOW)
BMS

Go to a Cruise Information

Cruise ID:

Go to a Dive Information

Dive ID:

Copyright 2011 Japan Agency for Marine-Earth Science and Technology

 **JAMSTEC** 国立研究開発法人 海洋研究開発機構
JAPAN AGENCY FOR MARINE-EARTH SCIENCE AND TECHNOLOGY

MIRAI MR00-K02 Cloud Ceiling

Last Modified: 2014-07-12

[ReadMe](#) [Observation Data](#) [Data Format](#)

Cruise ID: [MR00-K02](#)

Cloud Ceiling: Raw

Data Policy: [JAMSTEC](#)

Ceiling Raw

The record length of the data file is 56 bytes.

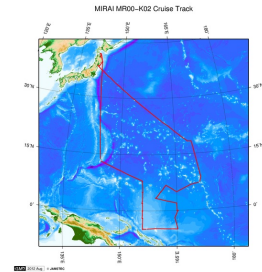
No.	Column	Content	Format	Remarks
1	1 - 8	Date	i4,i2,i2	YYYYMMDD (UTC)
2	10 - 15	Time	i2,i2,i2	hhmmss (UTC)
3	17 - 19	Operating software	a3	'CT0' : CT-VIEW 'CL0' : CL-VIEW
4	20 - 21	Software version	i2	Version of operating software
5	22	Data status	i1	1: Cloud base height/vertical visibility data 2: Cloud base height/vertical visibility, backscatter signal 6: Cloud base height/vertical visibility, cloud amount/height of cloud layer 7: Cloud base height/vertical visibility, backscatter signal, cloud amount/height of cloud layer
6	23	Spare character	a1	
7	25	Detection status	i1	0: Clear 1: One cloud base detected 2: Two cloud bases detected 3: Three cloud bases detected 4: Full obscuration determined but no cloud base detected 5: Some obscuration detected but determined to transparent
8	26	Warning and alarm information	a1	0: Self-check OK W: At least one warning active, no alarms A: At least one alarm active See No.12:observation information
9	28 - 32	Lowest cloud base height or vertical visibility	i5	In the case of detection status is 1,2 or 3: Lowest cloud base height In the case of detection status is 4: Calculation of vertical visibility In the case of detection status is 0 or 5: ///// Unit: See No.12:observation information
10	34 - 38	Second lowest cloud base height or highest signal detected	i5	In the case of detection status is 2 or 3: Second lowest cloud base height In the case of detection status is 4: Maximum height that a signal was detected In the case of detection status is 0,1 or 5: ///// Unit: See No.12:observation information
11	40 - 44	Highest cloud base height	i5	In the case of detection status is 3: Highest cloud base height In the case of detection status is 0,1,2,4,5: ///// Unit: See No.12:observation information
12	46 - 53	Observation information	a8	*1
13	55 - 56	Terminator	a2	CR+LF

*1: Observation information

The information is presented using 8 bytes characters. Each character, indicated in hexadecimal character, shows the following meanings;

Byte	Hexadecimal character (0:on, -:off)																Message(A:alarm, W:warning)
	0	1	2	3	4	5	6	7	8	9	A	B	C	D	E	F	
1	-	-	-	-	-	-	-	0	0	0	0	0	0	0	0	0	Laser temperature shut-off(A)
	-	-	-	0	0	0	0	-	-	-	-	0	0	0	0	0	Laser failure(A)
	-	0	0	-	0	0	0	-	0	0	-	-	0	0	0	0	Receiver failure(A)
	-	0	-	0	-	0	-	0	-	0	-	0	-	0	-	0	Voltage failure(A)
2	-	-	-	-	-	-	-	0	0	0	0	0	0	0	0	0	Spare(A)
	-	-	-	0	0	0	0	-	-	-	0	0	0	0	0	0	Spare(A)
	-	0	0	-	-	0	0	-	0	0	-	-	0	0	0	0	Spare(A)
	-	0	-	0	-	0	-	0	-	0	-	0	-	0	-	0	Spare(A)
3	-	-	-	-	-	-	-	0	0	0	0	0	0	0	0	0	Windows contaminated(W)
	-	-	-	0	0	0	0	-	-	-	-	0	0	0	0	0	Battery low(W)
	-	0	0	-	-	0	0	-	-	0	0	-	-	0	0	0	Laser power low(W)
	-	0	-	0	-	0	-	0	-	0	-	0	-	0	-	0	Laser temperature high or low(W)
4	-	-	-	-	-	-	-	0	0	0	0	0	0	0	0	0	Internal temperature high or low(W)
	-	-	-	0	0	0	0	-	-	-	-	0	0	0	0	0	Voltage high or low(W)
	-	0	0	-	-	0	0	-	-	0	0	-	-	0	0	0	Relative Humidity is > 85%(W)
	-	0	-	0	-	0	-	0	-	0	-	0	-	0	-	0	Receiver cross-talk compensation poor(W)
5	-	-	-	-	-	-	-	0	0	0	0	0	0	0	0	0	Blower suspect(W)
	-	-	-	0	0	0	0	-	-	-	0	0	0	0	0	0	Spare(W)
	-	0	0	-	-	0	0	-	-	0	0	-	-	0	0	0	Spare(W)
	-	0	-	0	-	0	-	0	-	0	-	0	-	0	-	0	Spare(W)
6	-	-	-	-	-	-	-	0	0	0	0	0	0	0	0	0	Blower is ON
	-	-	-	0	0	0	0	-	-	-	-	0	0	0	0	0	Blower heater is ON
	-	0	0	-	-	0	0	-	-	0	0	-	-	0	0	0	Internal heater is ON
	-	0	-	0	-	0	-	0	-	0	-	0	-	0	-	0	Units are METERS if ON , else FEET
7	-	-	-	-	-	-	-	0	0	0	0	0	0	0	0	0	Polling mode is ON
	-	-	-	0	0	0	0	-	-	-	0	0	0	0	0	0	Working from battery
	-	0	0	-	-	0	0	-	-	0	0	-	-	0	0	0	Single sequence mode is ON
	-	0	-	0	-	0	-	0	-	0	-	0	-	0	-	0	Manual settings are effective
8	-	-	-	-	-	-	-	0	0	0	0	0	0	0	0	0	Tilt angle is > 45 degrees
	-	-	-	0	0	0	0	-	-	-	-	0	0	0	0	0	High background radiance
	-	0	0	-	-	0	0	-	-	0	0	-	-	0	0	0	Manual blower control
	-	0	-	0	-	0	-	0	-	0	-	0	-	0	-	0	Spare

Related Information



[Enlarge Image](#)

MR00-K02

Ship Name: MIRAI
Period: 2000-02-12 - 2000-03-25
Chief Scientist: Yoshifumi Kuroda (JAMSTEC)
Project Name: [Tropical Ocean Climate Study (TOCS)]

Update History

2014-07-12	An observation data was registerd.
2012-12-25	An observation data was registerd.

JAMSTEC
Site Policy
Privacy Policy
Application for Data and Samples
Data Policy
What's New
Update History
Feeds

Lists
Publication List
Amount of Public Info.

Data
Map Search
Data Tree
Detailed Search

Information of the Ships
NATSUSHIMA
KAIYO
YOKOSUKA
MIRAI
KAIREI
CHIKYU
KAIMEI
SHINSEI MARU
HAKUHO MARU

Information of the Submersibles
KAIKO
SHINKAI 2000
SHINKAI 6500
DEEP TOW
HYPER-DOLPHIN
URASHIMA
YOKOSUKA DEEP TOW
6K Camera DEEP TOW
6K Sonar DEEP TOW
KM-ROV
POWER GRAB
SAMPLER (SHELL)
POWER GRAB
SAMPLER (CLOW)
BMS

Go to a Cruise Information

Cruise ID:

Go to a Dive Information

Dive ID:

Copyright 2011 Japan Agency for Marine-Earth Science and Technology

 **JAMSTEC** 国立研究開発法人 海洋研究開発機構
JAPAN AGENCY FOR MARINE-EARTH SCIENCE AND TECHNOLOGY

MIRAI MR00-K02 Cloud Ceiling

Last Modified: 2014-07-12

[ReadMe](#) [Observation Data](#) [Data Format](#)

Cruise ID: [MR00-K02](#)

Cloud Ceiling: Raw

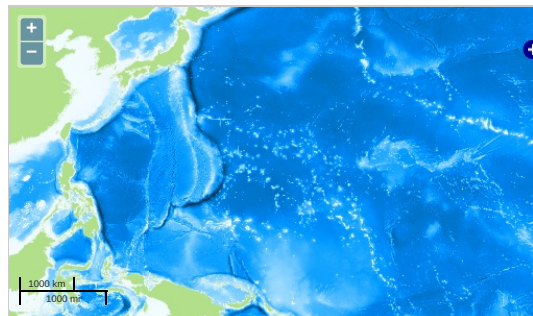
Data Policy: [JAMSTEC](#)

Observation Items: Cloud base height

Science Keywords:

ATMOSPHERE > CLOUDS > CLOUD
BASE

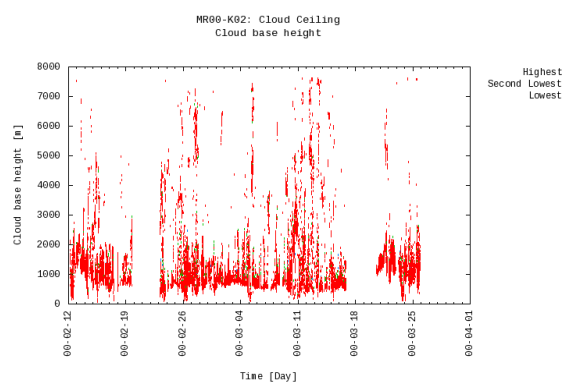
Observation Map



— ... Observation Line — ... Navigation ● ... Observation, Dive Point, Hole

Imagery reproduced from ...

Figures



Data List

[Add to Basket](#)

☐ File names

☐ C0021205.DAT

☐ C0021211.DAT

☐ C0021217.DAT

☐ C0021223.DAT

☐ C0021305.DAT

☐ C0021311.DAT

☐ C0021317.DAT

☐ C0021323.DAT

☐ C0021405.DAT

☐ C0021411.DAT

☐ C0021417.DAT

☐ C0021423.DAT

☐ C0021505.DAT

☐ C0021511.DAT

☐ C0021517.DAT

☐ C0021523.DAT

☐ C0021605.DAT

☐ C0021611.DAT

☐ C0021617.DAT

☐ C0021623.DAT

☐ C0021705.DAT

☐ C0021711.DAT

☐ C0021723.DAT

☐ C0021805.DAT

☐ C0021811.DAT

☐ C0021817.DAT

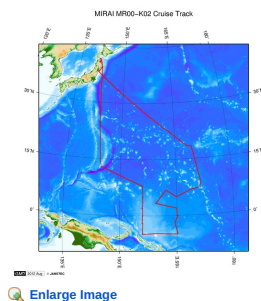
☐ C0021823.DAT

☐ C0021905.DAT

	C0021903.DAT
	File names
	C0021911.DAT
	C0021917.DAT
	C0022223.DAT
	C0022305.DAT
	C0022311.DAT
	C0022317.DAT
	C0022323.DAT
	C0022405.DAT
	C0022411.DAT
	C0022417.DAT
	C0022423.DAT
	C0022505.DAT
	C0022511.DAT
	C0022517.DAT
	C0022523.DAT
	C0022605.DAT
	C0022611.DAT
	C0022617.DAT
	C0022623.DAT
	C0022705.DAT
	C0022711.DAT
	C0022717.DAT
	C0022723.DAT
	C0022805.DAT
	C0022811.DAT
	C0022817.DAT
	C0022823.DAT
	C0022905.DAT
	C0022911.DAT
	C0022917.DAT
	C0022923.DAT
	C0030105.DAT
	C0030111.DAT
	C0030117.DAT
	C0030123.DAT
	C0030205.DAT
	C0030211.DAT
	C0030217.DAT
	C0030223.DAT
	C0030305.DAT
	C0030311.DAT
	C0030317.DAT
	C0030323.DAT
	C0030402.DAT
	C0030408.DAT
	C0030414.DAT
	C0030420.DAT
	C0030502.DAT
	C0030508.DAT
	C0030514.DAT
	C0030520.DAT
	C0030602.DAT
	C0030608.DAT
	C0030614.DAT
	C0030620.DAT
	C0030702.DAT
	C0030708.DAT
	C0030714.DAT
	C0030720.DAT
	C0030802.DAT
	C0030808.DAT
	C0030814.DAT
	C0030820.DAT
	C0030902.DAT
	C0030908.DAT
	C0030914.DAT
	C0030920.DAT
	C0031002.DAT
	C0031008.DAT
	C0031014.DAT
	C0031020.DAT
	C0031102.DAT
	C0031108.DAT
	C0031114.DAT
	C0031120.DAT
	C0031202.DAT
	C0031208.DAT
	C0031214.DAT
	C0031220.DAT
	C0031302.DAT
	C0031308.DAT

File names
<input type="checkbox"/> C0031314.DAT
<input type="checkbox"/> C0031320.DAT
<input type="checkbox"/> C0031402.DAT
<input type="checkbox"/> C0031408.DAT
<input type="checkbox"/> C0031414.DAT
<input type="checkbox"/> C0031420.DAT
<input type="checkbox"/> C0031502.DAT
<input type="checkbox"/> C0031508.DAT
<input type="checkbox"/> C0031514.DAT
<input type="checkbox"/> C0031520.DAT
<input type="checkbox"/> C0031602.DAT
<input type="checkbox"/> C0031608.DAT
<input type="checkbox"/> C0031614.DAT
<input type="checkbox"/> C0031620.DAT
<input type="checkbox"/> C0032013.DAT
<input type="checkbox"/> C0032019.DAT
<input type="checkbox"/> C0032101.DAT
<input type="checkbox"/> C0032107.DAT
<input type="checkbox"/> C0032113.DAT
<input type="checkbox"/> C0032119.DAT
<input type="checkbox"/> C0032201.DAT
<input type="checkbox"/> C0032207.DAT
<input type="checkbox"/> C0032213.DAT
<input type="checkbox"/> C0032219.DAT
<input type="checkbox"/> C0032301.DAT
<input type="checkbox"/> C0032307.DAT
<input type="checkbox"/> C0032313.DAT
<input type="checkbox"/> C0032319.DAT
<input type="checkbox"/> C0032401.DAT
<input type="checkbox"/> C0032407.DAT
<input type="checkbox"/> C0032413.DAT
<input type="checkbox"/> C0032419.DAT
<input type="checkbox"/> C0032501.DAT
<input type="checkbox"/> C0032507.DAT
<input type="checkbox"/> C0032513.DAT
<input type="checkbox"/> C0032519.DAT

Related Information



MR00-K02

Ship Name: MIRAI
 Period: 2000-02-12 - 2000-03-25
 Chief Scientist: Yoshifumi Kuroda (JAMSTEC)
 Project Name: [Tropical Ocean Climate Study (TOCS)]

Update History

2014-07-12	An observation data was registered.
2012-12-25	An observation data was registered.

JAMSTEC
 Site Policy
 Privacy Policy
 Application for Data and Samples
 Data Policy
 What's New
 Update History
 Feeds

Lists
 Publication List
 Amount of Public Info.
 Data
 Map Search
 Data Tree
 Detailed Search

Information of the Ships
 NATSUSHIMA
 KAIYO
 YOKOSUKA
 MIRAI
 KAIREI
 CHIKYU
 KAIIMEI
 SHINSEI MARU
 HAKUHO MARU

Information of the Submersibles
 KAIKO
 SHINKAI 2000
 SHINKAI 6500
 DEEP TOW
 HYPER-DOLPHIN
 URASHIMA
 YOKOSUKA DEEP TOW
 6K Camera DEEP TOW
 6K Sonar DEEP TOW
 KM-ROV
 POWER GRAB
 SAMPLER (SHELL)
 POWER GRAB
 SAMPLER (CLOW)
 BMS

Go to a Cruise Information

Cruise ID:

Go to a Dive Information

Dive ID: