

KAIREI KR04-04 Shipboard Three Component Magnetometer (STCM)

Last Modified: 2019-06-21

[ReadMe](#) [Observation Data](#) [Data Format](#)

Cruise ID: [KR04-04](#)

Shipboard Three Component Magnetometer (STCM): Processed (DMO)-Corrected

Data Policy: [JAMSTEC](#)

Observation Items: X, Y and Z component of geomagnetic field

Science Keywords:

OCEANS > MARINE GEOPHYSICS > MARINE MAGNETICS
SOLID EARTH > GEOMAGNETISM

Cruise Report

http://www.godac.jamstec.go.jp/catalog/data/doc_catalog/media/KR04-04_all.pdf

For Using Data

Principal Investigator

Data Management Office

Use Constraints

See [Terms and Conditions](#) about constrain of use.

Data Citation

See [Terms and Conditions](#) about data citation.

Period (UTC)

2004-04-15 06:50 – 2004-04-29 23:04

Instrument

Instrument:

3 component magnetometer



Overview

The data provided is for corrected three component geomagnetic field anomalies. Three-axes flux-gate sensors with ring-cored coils were fixed on the roof of the bridge.

They measure the following items :

- h-component : along track line component, positive for the bow direction pitch.
- s-component : across track line component, positive for the starboard side roll.
- v-component : vertical component, positive for the downward direction.

The effect of ship motion was eliminated by roll and pitch data which was provided by a tilt sensor. The apparent magnetic influence can be detected through a "Figure of 8 turn"(a pair of clockwise and anti-clockwise turns) on each cruise. If no Figure of 8 turn on the cruise was completed, the latest Figure of 8 turn from the previous cruise was applied (see section 4.). As a quality control, data of low reliability was removed (see section 5. for quality control criteria).

Synthetic geomagnetic field values were calculated from IGRF models.

Measurement System

(1) Magnetometer

Manufacturer : Tierra Technica Ltd.
Type : SFG1214
Measurement range : $\pm 100,000$ nT
Accuracy : less than 100 nT
Resolution : 1 nT
Location : No.2 Laboratory (Dry laboratory)

(2) Magnetic Sensor

Manufacturer : Tierra Technica Ltd.
Form : flux-gate sensors with ring-cored coils
Location : Compass deck

(3) Attitude sensor

Manufacturer : Tierra Technica Ltd.
Type : TVM-4
Measurement range : ± 45 degree
Accuracy : ± 0.2 degree (<30 degree)
Resolution : 0.0055 degree / LSB
Location : Gravimeter Room

(4) Gyro compass

Manufacturer : Yokogawa Denshikiki Co.,Ltd.
Type : CMZ500
Follow-Up Speed : 12 degree / sec
Accuracy : ± 0.2 degree *Secant(Lat.)
Location : Bridge deck

Direction of the Figure of 8 turn

Duration of the Figure of 8 turn

On this cruise

Date (UTC)

2004/04/15 20:33:00 - 2004/04/15 20:44:00

2004/04/19 20:12:00 - 2004/04/19 20:23:00

Data processing

The following corrections and calculations were performed.

(1) Ship magnetization correction

$$Hob = ARPYF + Hp \text{ ---(i)}$$

Hob: Observed magnetic field vector (Ship coordinates)

A: Effect of induced magnetization of the ship

R: Matrix of rotation due to the roll

P: Matrix of rotation due to the pitch

Y: Matrix of rotation due to the heading

F: Geomagnetic field vector

Hp: Ship's permanent magnetic moment

Following the equation(i), we calculate the geomagnetic field F.

$$RPYF = BHob + Hbp \text{ ---(ii)}$$

B: coefficient of Figure of 8 turn

Hbp: Permanent magnetic field vector of the ship

Reference: Isezaki,N., A new shipboard three-component magnetometer, GEOPHYSICS. VOL.51,NO10(1986);P1992-1998

(2) International Geomagnetic Reference Field (IGRF)

Synthetic geomagnetic field values are calculated from IGRF 11th Generation models by using navigation data ; latitude, longitude and date.

Reference: IAGA Division V-MOD Geomagnetic Field Modeling[<http://www.ngdc.noaa.gov/IAGA/vmod/igrf.html>]

(3) Calculation of the geomagnetic field anomaly

$$An = F - Figrf$$

An: Geomagnetic field anomaly vector

F: Geomagnetic field vector

Figrf: Synthetic geomagnetic field vector from IGRF

(4) Quality control of data

Following criteria were used for removal of data of low reliability:

- Time error (inversion of time, continuation of same timestamps)
- Summation of the difference of heading by one second exceeding 20 degree per 5 minutes
- Ground speed of the ship below 3knot or exceeding 20knot
- X, Y, or Z component of geomagnetic field anomaly exceeding $\pm 4000\text{nT}$

(5) Filtering of the geomagnetic field anomaly

Due to the residual undulation of the ship, a 120 second length Gaussian filter was applied for each component of the geomagnetic field anomaly data.

(6) Output of the data

Time (UTC)

Latitude (degree)

Longitude (degree)

X: Northward (positive on the north) component of geomagnetic field anomaly (nT)

Y: Eastward (positive on the east) component of geomagnetic field anomaly (nT)

Z: Vertical (positive for downward) component of geomagnetic field anomaly (nT)

T: Absolute value of geomagnetic field anomaly (nT)

Coefficient of the Figure of 8 turn and Permanent magnetic field vector of the ship

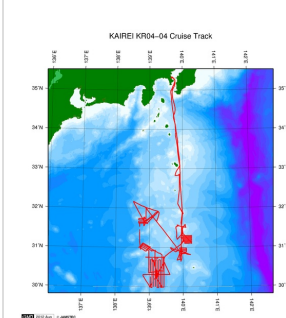
This coefficient was calculated from the Figure of 8 turn (see above)

	1.0917	0.0901	-0.0437		-807.3410
B=	-0.0959	1.2958	-0.0792	Hbp=	-3540.2195
	-0.0233	0.0041	0.8239		-5718.5633

Note

- (1) File naming rule: Cruise_ID_corr.stcm
- (2) Sampling rate: 10 seconds
- (3) Geodetic system: WGS84
- (4) If you would like the raw data set, please contact us from "Contact Us" above.

Related Information



KR04-04

Ship Name: KAIKEI
Period: 2004-04-15 - 2004-04-29
Chief Scientist: Yoshihiko Tamura (JAMSTEC)

Enlarge Image

Update History

2019-06-21	An observation data was registerd.
2018-03-23	An observation data was registerd.
2014-09-23	An observation data was registerd.
2013-12-06	An observation data was registerd.
2012-11-25	An observation data was registerd.

JAMSTEC

[Site Policy](#)

[Privacy Policy](#)

[Application for Data and Samples](#)

[Data Policy](#)

What's New

[Update History](#)

[Feeds](#)

Lists

[Publication List](#)

[Amount of Public Info.](#)

Data

[Map Search](#)

[Data Tree](#)

[Detailed Search](#)

Information of the Ships

[NATSUSHIMA](#)

[KAIYO](#)

[YOKOSUKA](#)

[MIRAI](#)

[KAIREI](#)

[CHIKYU](#)

[KAIMEI](#)

[SHINSEI MARU](#)

[HAKUHO MARU](#)

Information of the Submersibles

[KAIKO](#)

[SHINKAI 2000](#)

[SHINKAI 6500](#)

[DEEP TOW](#)

[HYPER-DOLPHIN](#)

[URASHIMA](#)

[YOKOSUKA DEEP TOW](#)

[6K Camera DEEP TOW](#)

[6K Sonar DEEP TOW](#)

[KM-ROV](#)

[POWER GRAB SAMPLER \(SHELL\)](#)

[POWER GRAB SAMPLER \(CLOW\)](#)

[BMS](#)

Go to a Cruise Information

Cruise ID:

Go to a Dive Information

Dive ID:

Copyright 2011 Japan Agency for Marine-Earth Science and Technology



JAMSTEC

国立研究開発法人
海洋研究開発機構

JAPAN AGENCY FOR MARINE-EARTH SCIENCE AND TECHNOLOGY

KAIREI KR04-04 Shipboard Three Component Magnetometer (STCM)

Last Modified: 2019-06-21

[ReadMe](#) [Observation Data](#) [Data Format](#)

Cruise ID: [KR04-04](#)

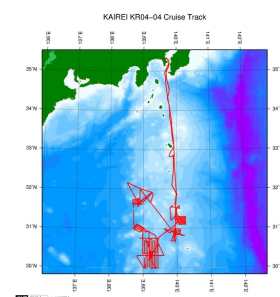
Shipboard Three Component Magnetometer (STCM): Processed (DMO)-Corrected

Data Policy: [JAMSTEC](#)

STCM Corrected

No.	Column	Content	Format	Unit	Remarks
1	1 - 8	Date	i4,i2,i2		YYYYMMDD (UTC)
2	10 -15	Time	i2,i2,i2		hhmmss (UTC)
3	17 -25	Latitude	f9.5	degree	No sign for the northern hemisphere. Negative for the southern hemisphere.
4	27 -36	Longitude	f10.5	degree	No sign for eastern hemisphere. Negative for the western hemisphere.
5	38 -43	X component of geomagnetic field anomaly	f6.0	nT	Positive on the north
6	45 -50	Y component of geomagnetic field anomaly	f6.0	nT	Positive on the east
7	52 -57	Z component of geomagnetic field anomaly	f6.0	nT	Positive for downward
8	59 -64	Absolute value of geomagnetic field anomaly	f6.0	nT	

Related Information



[Enlarge Image](#)

KR04-04

Ship Name: KAIKEI

Period: 2004-04-15 - 2004-04-29

Chief Scientist: Yoshihiko Tamura (JAMSTEC)

Update History

2019-06-21	An observation data was registerd.
2018-03-23	An observation data was registerd.
2014-09-23	An observation data was registerd.
2013-12-06	An observation data was registerd.
2012-11-25	An observation data was registerd.

JAMSTEC

[Site Policy](#)
[Privacy Policy](#)
[Application for Data and Samples](#)
[Data Policy](#)
[What's New](#)
[Update History](#)
[Feeds](#)

Lists

[Publication List](#)
[Amount of Public Info.](#)
[Data](#)
[Map Search](#)
[Data Tree](#)
[Detailed Search](#)

Information of the Ships

[NATSUSHIMA](#)
[KAIYO](#)
[YOKOSUKA](#)
[MIRAI](#)
[KAIREI](#)
[CHIKYU](#)
[KAIMEI](#)
[SHINSEI MARU](#)
[HAKUHO MARU](#)

Information of the Submersibles

[KAIKO](#)
[SHINKAI 2000](#)
[SHINKAI 6500](#)
[DEEP TOW](#)
[HYPER-DOLPHIN](#)
[URASHIMA](#)
[YOKOSUKA DEEP TOW](#)
[6K Camera DEEP TOW](#)
[6K Sonar DEEP TOW](#)
[KM-ROV](#)
[POWER GRAB SAMPLER \(SHELL\)](#)
[POWER GRAB SAMPLER \(CLOW\)](#)
[BMS](#)

Go to a Cruise Information

Cruise ID:

Go to a Dive Information

Dive ID:



KAIREI KR04-04 Shipboard Three Component Magnetometer (STCM)

Last Modified: 2019-06-21

[ReadMe](#) [Observation Data](#) [Data Format](#)

Cruise ID: **KR04-04**

Shipboard Three Component Magnetometer (STCM): Processed (DMO)-Corrected

Data Policy: **JAMSTEC**

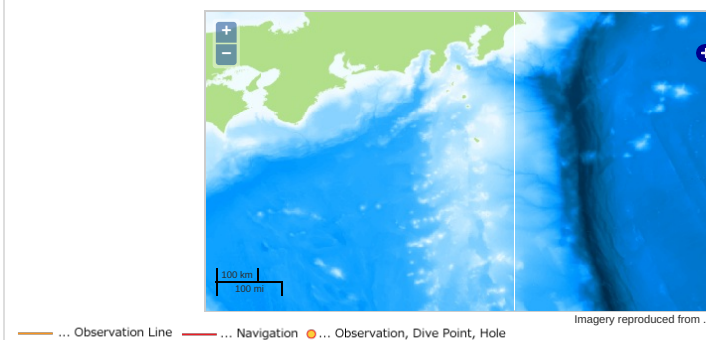
Observation Items: X, Y and Z component of geomagnetic field

Science Keywords:

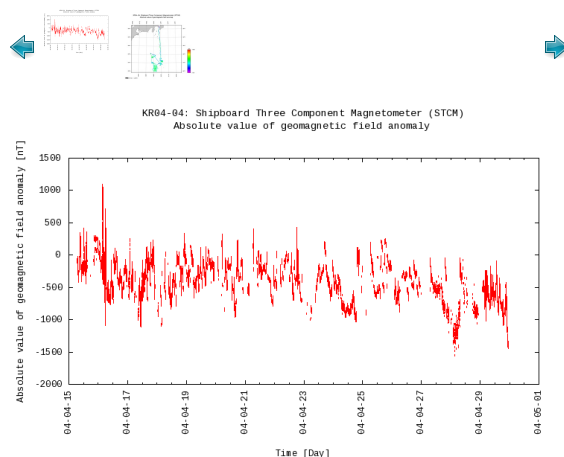
OCEANS > MARINE GEOPHYSICS > MARINE
MAGNETICS

SOLID EARTH > GEOMAGNETISM

Observation Map



Figures



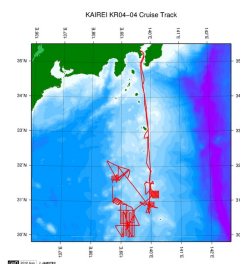
Data List

[Add to Basket](#)

File names

☐ KR04-04_corr.stcm

Related Information



KR04-04

Ship Name: KAIREI

Period: 2004-04-15 - 2004-04-29

Chief Scientist: Yoshihiko Tamura (JAMSTEC)

[Enlarge Image](#)

Update History

2019-06-21	An observation data was registered.
2018-03-23	An observation data was registered.
2014-09-23	An observation data was registered.
2013-12-06	An observation data was registered.
2012-11-25	An observation data was registered.

JAMSTEC

Site Policy

Privacy Policy

Application for Data and Samples

Data Policy

What's New

Update History

Feeds

Lists

Publication List

Amount of Public Info.

Data

Map Search

Data Tree

Detailed Search

Information of the Ships

NATSUSHIMA

KAIYO

YOKOSUKA

MIRAI

KAIREI

CHIKYU

KAIMEI

SHINSEI MARU

HAKUHO MARU

Information of the

Submersibles

KAIKO

SHINKAI 2000

SHINKAI 6500

DEEP TOW

HYPER-DOLPHIN

URASHIMA

YOKOSUKA DEEP TOW

6K Camera DEEP TOW

6K Sonar DEEP TOW

KM-ROV

POWER GRAB SAMPLER

(SHELL)

POWER GRAB SAMPLER

(CLOW)

BMS

Go to a Cruise Information

Cruise ID:

Go

Go to a Dive Information

Dive ID:

Go

Copyright 2011 Japan Agency for Marine-Earth Science and Technology



JAMSTEC

国立研究開発法人
海洋研究開発機構
JAPAN AGENCY FOR MARINE-EARTH SCIENCE AND TECHNOLOGY