

MIRAI MR00-K03 Th-234, POC, and PON data

Last Modified: 2020-06-30

ReadMe

Cruise ID: [MR00-K03](#)

Th-234, POC, and PON data : Processed (PI)

Data Policy: [JAMSTEC](#)

Observation Items:

Science Keywords:

Data Information

Th-234, POC, and PON data for estimate of flux of the particulate organic carbon from the surface layer. The samples of seawater and suspended particle were collected by CTD-RMS or in situ pumping system. Data obtained from the cruises were electrically compiled as excel files in the database (<https://doi.org/10.17596/0001986>), and were depth, potential temperature (Theta), salinity, potential density (Sigma-theta), POC, PON, particulate Th-234 (P-234Th), dissolved Th-234 (D-234Th), and chlorophyll a. The data of depth, potential temperature, salinity, and potential density were measured by CTD sensors. The error of P-234Th and D-234Th was estimated from counting error.

Please contact to "http://www.godac.jamstec.go.jp/catalog/data_catalog/metadataDisp/234Th_data?lang=en&view=detail".

Cruise Report

http://www.godac.jamstec.go.jp/catalog/data/doc_catalog/media/MR00-K03_all.pdf

For Using Data

Principal Investigator

Hajime Kawakami (JAMSTEC)

Use Constraints

Please contact PI (Hajime Kawakami, kawakami@jamstec.go.jp)

Data Citation

Data Citation: Hajime Kawakami (2019) 234Th and POC data in the North Pacific. JAMSTEC. doi:10.17596/0001986 (accessed YYYY-MM-DD)

Instrument

Instrument:

elemental analyzer

Instrument Information:

Model 2400II, PerkinElmer Inc.

Instrument:

Alpha-ray detector

Instrument Information:

Octéte, Seiko EG&G Co. Ltd.



Sample

Seawater, the others

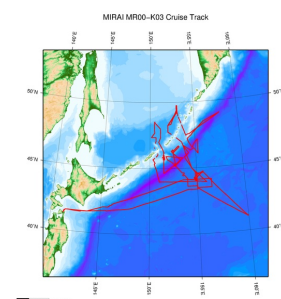
Sample ID

Seawater, suspended particle

Data Format

Excel file

Related Information



[Enlarge Image](#)

MR00-K03

Ship Name: MIRAI
Period: 2000-05-09 - 2000-06-09
Chief Scientist: Masashi Kusakabe (JAMSTEC)
Project Name: [Station KNOT]

Update History

2020-06-30 An observation data was registered.

Update History
Feeds

SHINSEI MARU
HAKUHO MARU

YOKOSUKA DEEP TOW
6K Camera DEEP TOW
6K Sonar DEEP TOW
KM-ROV
POWER GRAB SAMPLER
(SHELL)
POWER GRAB SAMPLER
(CLOW)
BMS

Copyright 2011 Japan Agency for Marine-Earth Science and
Technology



JAMSTEC 国立研究開発法人
海洋研究開発機構
JAPAN AGENCY FOR MARINE-EARTH SCIENCE AND TECHNOLOGY

MIRAI MR00-K03 Th-234, POC, and PON data

Last Modified: 2020-06-30

ReadMe

Cruise ID: **MR00-K03**

Th-234, POC, and PON data Processed (PI)

Data Policy: [JAMSTEC](#)

Observation Items:

Science Keywords:

Data Information

Th-234, POC, and PON data for estimate of flux of the particulate organic carbon from the surface layer. The samples of seawater and suspended particle were collected by CTD-RMS or in situ pumping system. Data obtained from the cruises were electrically compiled as excel files in the database (<https://doi.org/10.17596/0001986>), and were depth, potential temperature (Theta), salinity, potential density (Sigma-theta), POC, PON, particulate Th-234 (P-234Th), dissolved Th-234 (D-234Th), and chlorophyll a. The data of depth, potential temperature, salinity, and potential density were measured by CTD sensors. The error of P-234Th and D-234Th was estimated from counting error.

Please contact to "http://www.godac.jamstec.go.jp/catalog/data_catalog/metadataDisp/234Th_data?lang=en&view=detail".

Cruise Report

http://www.godac.jamstec.go.jp/catalog/data/doc_catalog/media/MR00-K03_all.pdf

For Using Data

Principal Investigator

Hajime Kawakami (JAMSTEC)

Use Constraints

Please contact PI (Hajime Kawakami, kawakami@jamstec.go.jp)

Data Citation

Data Citation: Hajime Kawakami (2019) 234Th and POC data in the North Pacific. JAMSTEC. doi:10.17596/0001986 (accessed YYYY-MM-DD)

Instrument

Instrument:

elemental analyzer

Instrument Information:

Model 2400II, PerkinElmer Inc.

Instrument:

Alpha-ray detector

Instrument Information:

Octete, Seiko EG&G Co. Ltd.



Sample

Seawater, the others

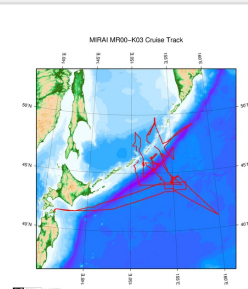
Sample ID

Seawater, suspended particle

Data Format

Excel file

Related Information



[Enlarge Image](#)

MR00-K03

Ship Name: MIRAI

Period: 2000-05-09 - 2000-06-09

Chief Scientist: Masashi Kusakabe (JAMSTEC)

Project Name: [Station KNOT]

Update History

2020-06-30

An observation data was registered.

JAMSTEC

[Site Policy](#)

[Privacy Policy](#)

[Application for Data and Samples](#)

[Data Policy](#)

[What's New](#)

[Update History](#)

[Feeds](#)

Lists

[Publication List](#)

[Amount of Public Info.](#)

Data

[Map Search](#)

[Data Tree](#)

[Detailed Search](#)

Information of the Ships

[NATSUSHIMA](#)

[KAIYO](#)

[YOKOSUKA](#)

[MIRAI](#)

[KAIREI](#)

[CHIKYU](#)

[KAIMEI](#)

[SHINSEI MARU](#)

[HAKUHO MARU](#)

Information of the Submersibles

[KAIKO](#)

[SHINKAI 2000](#)

[SHINKAI 6500](#)

[DEEP TOW](#)

[HYPER-DOLPHIN](#)

[URASHIMA](#)

[YOKOSUKA DEEP TOW](#)

[6K Camera DEEP TOW](#)

[6K Sonar DEEP TOW](#)

[KM-ROV](#)

[POWER GRAB SAMPLER \(SHELL\)](#)

[POWER GRAB SAMPLER \(CLOW\)](#)

[BMS](#)

Go to a Cruise Information

Cruise ID:

Go to a Dive Information

Dive ID: