

KAIMEI KM17-09 Sea-surface Photosynthetically Active Radiation (PAR)

Last Modified: 2018-03-22

[ReadMe](#) [Observation Data](#) [Data Format](#)

Cruise ID: [KM17-09](#)

Sea-surface Photosynthetically Active Radiation (PAR) : Raw

Data Policy: [JAMSTEC](#)

Observation Items: PAR

Science Keywords:

OCEANS > OCEAN OPTICS > PHOTOSYNTHETICALLY ACTIVE RADIATION

Cruise Report

http://www.godac.jamstec.go.jp/catalog/data/doc_catalog/media/KM17-09_all.pdf

For Using Data

Principal Investigator

Data Management Office

Use Constraints

See [Terms and Conditions](#) about constrain of use.

Data Citation

See [Terms and Conditions](#) about data citation.

Period (UTC)

2017-09-13 00:00 – 2017-09-22 00:30

Instrument

Instrument:

Surface Photosynthetically available radiation (PAR)



Overview

Photosynthetically available radiation (PAR) and ultraviolet irradiance (6 wavelength) in the air were acquired by the radiometer PUV-2510, which was set up on foremast.

Specifications

Manufacturer:	Biospherical Instruments Inc.
Type:	PUV-2510
Logging rate:	1 [second]
Location:	Foremast (22m from the sea surface)

[PAR]

Measurement wavelength:	400 - 700 [nm]
-------------------------	----------------

[Ultraviolet irradiane]

Measurement wavelength:	305, 313, 320, 340, 380, 395 [nm]
-------------------------	-----------------------------------

Note

1) File naming rule for PAR_YYYYMMDD.txt.

PAR_ :	Fixed as 'PAR_'
YYYY :	Recording start Year (UTC)
MM :	Recording start month (UTC)
DD :	Recording start day (UTC)

2) The following period, PAR and UV data were invalid due to the instrument trouble.

2017/09/16 21:58 - 21:59UTC

Related Information

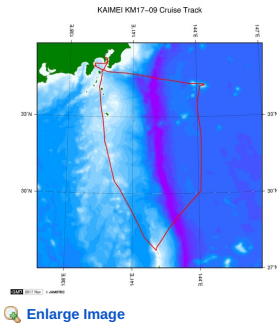
 Cruise Data  Dive Data

KM17-09

Ship Name: KAIMEI

Period: 2017-09-13 - 2017-09-22

Chief Scientist: Masanobu Yanagitani (JAMSTEC)



Update History

2018-03-22	An observation data was registerd.
------------	------------------------------------

JAMSTEC

Site Policy

Privacy Policy

Application for Data and Samples

Data Policy

What's New

Update History

Feeds

Lists

Publication List

Amount of Public Info.

Data

Map Search

Data Tree

Detailed Search

Information of the Ships

NATSUSHIMA

KAIYO

YOKOSUKA

MIRAI

KAIREI

CHIKYU

KAIMEI

SHINSEI MARU

HAKUHO MARU

Information of the Submersibles

KAIKO

SHINKAI 2000

SHINKAI 6500

DEEP TOW

HYPER-DOLPHIN

URASHIMA

YOKOSUKA DEEP TOW

6K Camera DEEP TOW

6K Sonar DEEP TOW

KM-ROV

POWER GRAB SAMPLER

(SHELL)

POWER GRAB SAMPLER

(CLOW)

BMS

Go to a Cruise Information

Cruise ID:

Go

Go to a Dive Information

Dive ID:

Go

Copyright 2011 Japan Agency for Marine-Earth Science and Technology



JAMSTEC

国立研究開発法人
海洋研究開発機構
JAPAN AGENCY FOR MARINE-EARTH SCIENCE AND TECHNOLOGY

KAIMEI KM17-09 Sea-surface Photosynthetically Active Radiation (PAR)

Last Modified: 2018-03-22

[ReadMe](#) [Observation Data](#) [Data Format](#)

Cruise ID: **KM17-09**

Sea-surface Photosynthetically Active Radiation (PAR) Raw

Data Policy: [JAMSTEC](#)

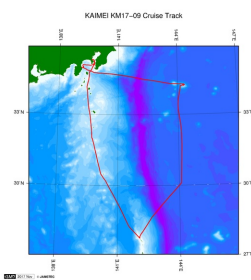
Sea-surface PAR(KAIMEI)

Comma Separated Value

Column No.	Content	Remarks
1	DATE	Year, Month Day [YYYYMMDD]
2	TIME	Hour, Minute, Second [hhmmss]
3	LATITUDE	Latitude [dd-mm.mmmmmN(S)]
4	LONGITUDE	Longitude [ddd-mm.mmmmmE(W)]
5	PAR	PAR (Variable length, Floating-point, Exponential Form) [microEinsteins/cm ² /sec]
6	UV(305nm)	Ultraviolet Irradiance;305nm (Variable length, Floating-point, Exponential Form) [microW/cm ² /nm]
5	UV(313nm)	Ultraviolet Irradiance;313nm (Variable length, Floating-point, Exponential Form) [microW/cm ² /nm]
6	UV(320nm)	Ultraviolet Irradiance;320nm (Variable length, Floating-point, Exponential Form) [microW/cm ² /nm]
7	UV(340nm)	Ultraviolet Irradiance;340nm (Variable length, Floating-point, Exponential Form) [microW/cm ² /nm]
8	UV(380nm)	Ultraviolet Irradiance;380nm (Variable length, Floating-point, Exponential Form) [microW/cm ² /nm]
9	UV(395nm)	Ultraviolet Irradiance;395nm (Variable length, Floating-point, Exponential Form) [microW/cm ² /nm]

Related Information

[Cruise Data](#) [Dive Data](#)



[Enlarge Image](#)

KM17-09

Ship Name: KAIMEI

Period: 2017-09-13 - 2017-09-22

Chief Scientist: Masanobu Yanagitani (JAMSTEC)

Update History

2018-03-22 An observation data was registered.

JAMSTEC
[Site Policy](#)
[Privacy Policy](#)
[Application for Data and Samples](#)
[Data Policy](#)
What's New
[Update History](#)
[Feeds](#)

Lists
[Publication List](#)
[Amount of Public Info.](#)
Data
[Map Search](#)
[Data Tree](#)
[Detailed Search](#)

Information of the Ships
[NATSUSHIMA](#)
[KAIYO](#)
[YOKOSUKA](#)
[MIRAI](#)
[KAIREI](#)
[CHIKYU](#)
[KAIMEI](#)
[SHINSEI MARU](#)
[HAKUHO MARU](#)

Information of the Submersibles
[KAIKO](#)
[SHINKAI 2000](#)
[SHINKAI 6500](#)
[DEEP TOW](#)
[HYPER-DOLPHIN](#)
[URASHIMA](#)
[YOKOSUKA DEEP TOW](#)
[6K Camera DEEP TOW](#)
[6K Sonar DEEP TOW](#)
[KM-ROV](#)
[POWER GRAB SAMPLER \(SHELL\)](#)
[POWER GRAB SAMPLER \(CLOW\)](#)
[BMS](#)

Go to a Cruise Information

Cruise ID:

Go to a Dive Information

Dive ID:

KAIMEI KM17-09 Sea-surface Photosynthetically Active Radiation (PAR)

Last Modified: 2018-03-22

[ReadMe](#) [Observation Data](#) [Data Format](#)

Cruise ID: [KM17-09](#)

Sea-surface Photosynthetically Active Radiation (PAR) : Raw

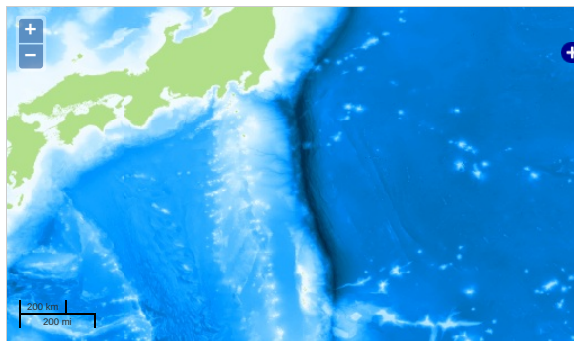
Data Policy: [JAMSTEC](#)

Observation Items: PAR

Science Keywords:

OCEANS > OCEAN OPTICS > PHOTOSYNTHETICALLY ACTIVE RADIATION

Observation Map



... Observation Line ... Navigation ... Observation, Dive Point, Hole

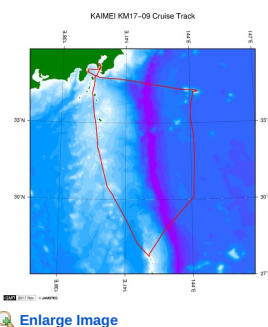
Data List

File names

☐ PAR_20170913.txt
☐ PAR_20170914.txt
☐ PAR_20170915.txt
☐ PAR_20170916.txt
☐ PAR_20170917.txt
☐ PAR_20170918.txt
☐ PAR_20170919.txt
☐ PAR_20170920.txt
☐ PAR_20170921.txt
☐ PAR_20170922.txt

Related Information

☒ Cruise Data ☐ Dive Data



KM17-09

Ship Name: KAIMEI

Period: 2017-09-13 - 2017-09-22

Chief Scientist: Masanobu Yanagitani (JAMSTEC)

Update History

2018-03-22 An observation data was registered.

JAMSTEC
Site Policy
Privacy Policy
Application for Data and Samples
Data Policy
What's New
Update History
Feeds

Lists
Publication List
Amount of Public Info.
Data
Map Search
Data Tree
Detailed Search

Information of the Ships
NATSUSHIMA
KAIYO
YOKOSUKA
MIRAI
KAIREI
CHIKYU
KAIMEI
SHINSEI MARU
HAKUHO MARU

Information of the Submersibles
KAIKO
SHINKAI 2000
SHINKAI 6500
DEEP TOW
HYPER-DOLPHIN
URASHIMA
YOKOSUKA DEEP TOW
6K Camera DEEP TOW
6K Sonar DEEP TOW
KM-ROV
POWER GRAB SAMPLER

Go to a Cruise Information

Cruise ID:

Go to a Dive Information

Dive ID:

(SHELL)
POWER GRAB SAMPLER
(CLOW)
BMS

Copyright 2011 Japan Agency for Marine-Earth Science and
Technology



JAMSTEC 国立研究開発法人
海洋研究開発機構
JAPAN AGENCY FOR MARINE-EARTH SCIENCE AND TECHNOLOGY