

## MIRAI MR10-03 Leg2 PAR (Photosynthetically available radiation)

Last Modified: 2014-03-06

[ReadMe](#) [Observation Data](#)

Cruise ID: [MR10-03 Leg2](#)

PAR (Photosynthetically available radiation): Processed (PI)

Data Policy: [JAMSTEC](#)

Observation Items:

Science Keywords:

### Data Information

Data obtained by LI-1400 DataLogger from LI-COR Biosciences. DataLogger was set up on the compass deck.

### Cruise Report

[http://www.godac.jamstec.go.jp/catalog/data/doc\\_catalog/media/MR10-03\\_leg1-2\\_all.pdf](http://www.godac.jamstec.go.jp/catalog/data/doc_catalog/media/MR10-03_leg1-2_all.pdf)

### For Using Data

#### Principal Investigator

Ken Furuya (Department of Aquatic Bioscience, The University of Tokyo)

#### Use Constraints

Please make preliminary contacts with us, before use.

#### Data Citation

Please make preliminary contacts with us, before use.

### Instrument

Instrument:

LI-1400 (LI-COR, Co.)

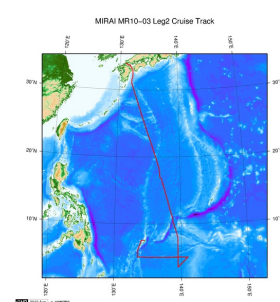
Instrument Information:



### Data Format

Excel file (.xls)

### Related Information



[Enlarge Image](#)

#### MR10-03 Leg2

Ship Name: MIRAI

Period: 2010-05-13 - 2010-06-27

Chief Scientist: Hiroyuki Yamada (JAMSTEC)

Project Name: [MJO Research]

Proposal ▶ Observational Study on Air-Sea Interaction in the Tropical Western Pacific Ocean

Title:

### Update History

2014-03-06	An observation data was registered.
2012-09-28	An observation data was registered.

#### JAMSTEC

[Site Policy](#)  
[Privacy Policy](#)  
[Application for Data and Samples](#)  
[Data Policy](#)  
[What's New](#)  
[Update History](#)  
[Feeds](#)

#### Lists

[Publication List](#)  
[Amount of Public Info.](#)  
  
[Data](#)  
[Map Search](#)  
[Data Tree](#)  
[Detailed Search](#)

#### Information of the Ships

[NATSUSHIMA](#)  
[KAIYO](#)  
[YOKOSUKA](#)  
[MIRAI](#)  
[KAIREI](#)  
[CHIKYU](#)  
[KAIMEI](#)  
[SHINSEI MARU](#)  
[HAKUHO MARU](#)

#### Information of the Submersibles

[KAIKO](#)  
[SHINKAI 2000](#)  
[SHINKAI 6500](#)  
[DEEP TOW](#)  
[HYPER-DOLPHIN](#)  
[URASHIMA](#)  
[YOKOSUKA DEEP TOW](#)  
[6K Camera DEEP TOW](#)  
[6K Sonar DEEP TOW](#)  
[KM-ROV](#)  
[POWER GRAB SAMPLER \(SHELL\)](#)  
[POWER GRAB SAMPLER \(CLOW\)](#)  
[BMS](#)

#### Go to a Cruise Information

Cruise ID:

#### Go to a Dive Information

Dive ID:

## MIRAI MR10-03 Leg2 PAR (Photosynthetically available radiation)

Last Modified: 2014-03-06

[ReadMe](#) [Observation Data](#)

Cruise ID: [MR10-03 Leg2](#)

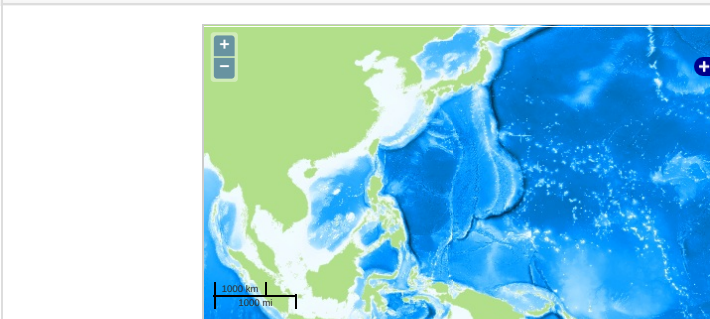
PAR (Photosynthetically available radiation): Processed (PI)

Data Policy: [JAMSTEC](#)

Observation Items:

Science Keywords:

### Observation Map



... Observation Line ... Navigation ... Observation, Dive Point, Hole

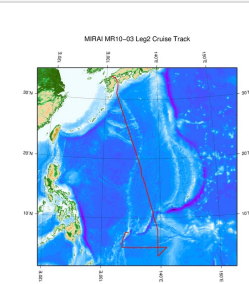
### Data List

[Add to Basket](#)

File names

☐ MR10-03\_leg2\_par.zip

### Related Information



[Enlarge Image](#)

#### MR10-03 Leg2

Ship Name: MIRAI

Period: 2010-05-13 - 2010-06-27

Chief Scientist: Hiroyuki Yamada (JAMSTEC)

Project Name: [MJO Research]

Proposal: ▶ Observational Study on Air-Sea Interaction in the Tropical Western Pacific Ocean

Title:

### Update History

2014-03-06	An observation data was registered.
2012-09-28	An observation data was registered.

#### JAMSTEC

[Site Policy](#)  
[Privacy Policy](#)  
[Application for Data and Samples](#)  
[Data Policy](#)  
[What's New](#)  
[Update History](#)  
[Feeds](#)

#### Lists

[Publication List](#)  
[Amount of Public Info.](#)  
[Data](#)  
[Map Search](#)  
[Data Tree](#)  
[Detailed Search](#)

#### Information of the Ships

[NATSUSHIMA](#)  
[KAIYO](#)  
[YOKOSUKA](#)  
[MIRAI](#)  
[KAIREI](#)  
[CHIKYU](#)  
[KAIMEI](#)  
[SHINSEI MARU](#)  
[HAKUHO MARU](#)

#### Information of the Submersibles

[KAIKO](#)  
[SHINKAI 2000](#)  
[SHINKAI 6500](#)  
[DEEP TOW](#)  
[HYPER-DOLPHIN](#)  
[URASHIMA](#)  
[YOKOSUKA DEEP TOW](#)  
[6K Camera DEEP TOW](#)  
[6K Sonar DEEP TOW](#)  
[KM-ROV](#)  
[POWER GRAB SAMPLER \(SHELL\)](#)  
[POWER GRAB SAMPLER \(CLOW\)](#)  
[BMS](#)

#### Go to a Cruise Information

Cruise ID:

#### Go to a Dive Information

Dive ID:



**JAMSTEC** 国立研究開発法人  
海洋研究開発機構  
JAPAN AGENCY FOR MARINE-EARTH SCIENCE AND TECHNOLOGY