

## MIRAI MR14-02 Ozone concentration Carbon monoxide concentration

Last Modified: 2018-01-23

[ReadMe](#) [Observation Data](#)

Cruise ID: [MR14-02](#)

Ozone concentration Carbon monoxide concentration: Processed (PI)

Data Policy: [JAMSTEC](#)

Observation Items:

Science Keywords:

### Data Information

Ozone (O3) and carbon monoxide (CO) measurements were continuously conducted during the cruise using a UV ozone analyzer (Model 49C, Thermo) and an IR CO analyzer (Model 48C, Thermo) located in the Research Information Center, to which ambient air was drawn through ~20-m-long Teflon tubes.

### Cruise Report

[http://www.godac.jamstec.go.jp/catalog/data/doc\\_catalog/media/MR14-02\\_all.pdf](http://www.godac.jamstec.go.jp/catalog/data/doc_catalog/media/MR14-02_all.pdf)

### For Using Data

#### Principal Investigator

Yugo Kanaya (Department of Environmental Geochemical Cycle Research)

#### Use Constraints

It is recommended to contact the above investigator before use for publication.

#### Data Citation

It is recommended to contact the above investigator before use for publication.

### Instrument

Instrument:

UV ozone analyzer (Model 49C,  
Thermo) IR CO analyzer (Model 48C,  
Thermo)

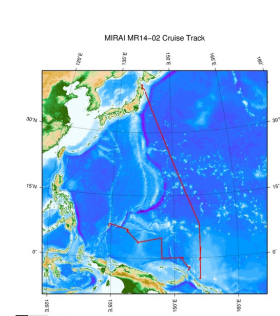
Instrument Information:



### Data Format

Text format. See the header of the data files for more details.

## Related Information



[Enlarge Image](#)

### MR14-02

Ship Name: MIRAI

Period: 2014-02-15 - 2014-03-23

Chief Scientist: Takuya Hasegawa (JAMSTEC)

Project Name: [Tropical Ocean Climate Study (TOCS)]

Proposal ▶ Tropical Ocean Climate Study

Title:

## Update History

2018-01-23	An observation data was registerd.
2016-04-30	An observation data was registerd.

JAMSTEC  
Site Policy  
Privacy Policy  
Application for Data and Samples  
Data Policy  
What's New  
Update History  
Feeds

Lists  
Publication List  
Amount of Public Info.  
Data  
Map Search  
Data Tree  
Detailed Search

Information of the Ships  
NATSUSHIMA  
KAIYO  
YOKOSUKA  
MIRAI  
KAIREI  
CHIKYU  
KAIMEI  
SHINSEI MARU  
HAKUHO MARU

Information of the Submersibles  
KAIKO  
SHINKAI 2000  
SHINKAI 6500  
DEEP TOW  
HYPER-DOLPHIN  
URASHIMA  
YOKOSUKA DEEP TOW  
6K Camera DEEP TOW  
6K Sonar DEEP TOW  
KM-ROV

### Go to a Cruise Information

Cruise ID:

### Go to a Dive Information

Dive ID:

POWER GRAB SAMPLER  
(SHELL)  
POWER GRAB SAMPLER  
(CLOW)  
BMS

Copyright 2011 Japan Agency for Marine-Earth Science and  
Technology



**JAMSTEC** 国立研究開発法人  
海洋研究開発機構  
JAPAN AGENCY FOR MARINE-EARTH SCIENCE AND TECHNOLOGY

## MIRAI MR14-02 Ozone concentration Carbon monoxide concentration

Last Modified: 2018-01-23

[ReadMe](#) [Observation Data](#)

Cruise ID: [MR14-02](#)

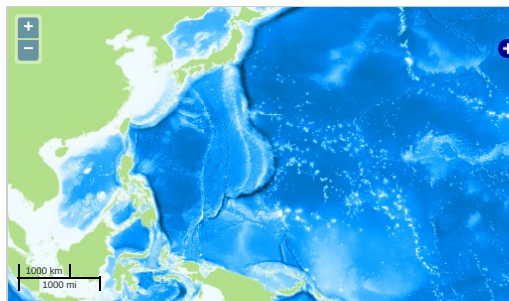
Ozone concentration Carbon monoxide concentration: Processed (PI)

Data Policy: [JAMSTEC](#)

Observation Items:

Science Keywords:

### Observation Map



... Observation Line ... Navigation ... Observation, Dive Point, Hole

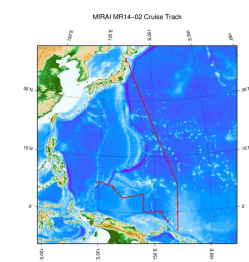
### Data List

[Add to Basket](#)

#### File names

☐ mr14-02\_o3cofinal\_1h.csv

### Related Information



[Enlarge Image](#)

#### MR14-02

Ship Name: MIRAI

Period: 2014-02-15 - 2014-03-23

Chief Scientist: Takuya Hasegawa (JAMSTEC)

Project Name: [Tropical Ocean Climate Study (TOCS)]

Proposal ▶ Tropical Ocean Climate Study

Title:

### Update History

2018-01-23	An observation data was registered.
2016-04-30	An observation data was registered.

#### JAMSTEC

[Site Policy](#)  
[Privacy Policy](#)  
[Application for Data and Samples](#)  
[Data Policy](#)  
  
[What's New](#)  
[Update History](#)  
[Feeds](#)

#### Lists

[Publication List](#)  
[Amount of Public Info.](#)  
  
[Data](#)  
[Map Search](#)  
[Data Tree](#)  
[Detailed Search](#)

#### Information of the Ships

[NATSUSHIMA](#)  
[KAIYO](#)  
[YOKOSUKA](#)  
[MIRAI](#)  
[KAIREI](#)  
[CHIKYU](#)  
[KAIMEI](#)  
[SHINSEI MARU](#)  
[HAKUHO MARU](#)

#### Information of the Submersibles

[KAIKO](#)  
[SHINKAI 2000](#)  
[SHINKAI 6500](#)  
[DEEP TOW](#)  
[HYPER-DOLPHIN](#)  
[URASHIMA](#)  
[YOKOSUKA DEEP TOW](#)  
[6K Camera DEEP TOW](#)  
[6K Sonar DEEP TOW](#)  
[KM-ROV](#)  
[POWER GRAB SAMPLER \(SHELL\)](#)  
[POWER GRAB SAMPLER \(CLOW\)](#)  
[BMS](#)

#### Go to a Cruise Information

Cruise ID:

#### Go to a Dive Information

Dive ID:



**JAMSTEC** 国立研究開発法人  
海洋研究開発機構  
JAPAN AGENCY FOR MARINE-EARTH SCIENCE AND TECHNOLOGY