

## MIRAI MR15-03 Leg2 Underway Thermosalinograph

Last Modified: 2017-06-29

[ReadMe](#) [Observation Data](#) [Data Format](#)

Cruise ID: [MR15-03 Leg2](#)

Underway Thermosalinograph: Processed (DMO)-QCed

Data Policy: [JAMSTEC](#)

Observation Items: Temperature, Salinity, Dissolved oxygen

Science Keywords:

OCEANS > OCEAN CHEMISTRY > OXYGEN  
OCEANS > SALINITY/DENSITY > SALINITY  
OCEANS > OCEAN > SEA SURFACE  
OCEANS TEMPERATURE TEMPERATURE

Cruise Report

[http://www.godac.jamstec.go.jp/catalog/data/doc\\_catalog/media/MR15-03\\_leg2\\_all.pdf](http://www.godac.jamstec.go.jp/catalog/data/doc_catalog/media/MR15-03_leg2_all.pdf)

### [For Using Data](#)

#### Principal Investigator

Data Management Office

#### Use Constraints

See [Terms and Conditions](#) about constrain of use.

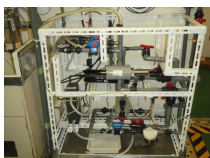
#### Data Citation

See [Terms and Conditions](#) about data citation.

### Instrument

Instrument:

Continuous sea surface water monitoring system (MR14-03 - )



### Overview

Thermosalinograph measures the following surface parameters continuously.

- temperature
- salinity
- dissolved oxygen

Sea surface water is continuously pumped up at 4.5 meters depth to the sea surface monitoring laboratory and then flowed into each analysis equipment through a steel pipe and a vinyl-chloride pipe.

The flow rate of this system is controlled by some valves. Data are recorded in the personal computer.

### System

- Temperature sensor
  - Model : SBE 38, Sea-Bird Electronics, Inc.
  - Serial number : 3852788-0457
  - Measurement range : -5 to 35 deg-C (ITS-90)
  - Sensor location : Bow thruster room
- Salinity sensor
  - MicroTSG (Thermosalinograph)
  - Model : SBE-45, Sea-Bird Electronics, Inc.
  - Serial number : 4552788-0264
  - Measurement range : [temperature] -5 to +35 deg-C (ITS-90), [conductivity] 0 to 7 S/m
  - Sensor location : Sea surface monitoring laboratory
- DO sensor
  - Model : OPTODE3835, AANDERAA Instruments.
  - Serial number : 1915
  - Measurement range : 0 to 500  $\mu\text{mol dm}^{-3}$
  - Sensor location : Sea surface monitoring laboratory

### Number of significant figures of data

After considering the accuracy of the sensors, the significant digit of data was changed as in the following list.

Data	Raw (ASCII data)	On this web site
Temperature	0.0001 [deg-C]	0.001 [deg-C]
Salinity	0.0001 [PSU]	0.001 [PSU]
Dissolved oxygen	0.01 [ $\mu\text{mol/kg}$ ]	0.1 [ $\mu\text{mol/kg}$ ]

\* The unit of the dissolved oxygen was changed from ml/l into  $\mu\text{mol/kg}$  since MR10-04.

### Data acquisition

Date/Time (UTC)	Start/Stop	Remarks
2015/10/09, 23:15	start	54-13.41N, 167-14.20W
2015/10/19, 05:30	stop	40-14.38N, 147-37.24E

### Calibration Information

Calibration Information is as follows.

[Calibration Information](#)

### Data processing

(1) Quality control

QCed data were added flag according to the NODC (National Oceanographic Data Center) quality control procedure.

1) The gradient check of adjacent depth data

Please see the site of NODC of the following link for quality control procedure in detail.

[QUALITY CONTROL AND PROCESSING OF HISTORICAL OCEANOGRAPHIC TEMPERATURE, SALINITY, AND OXYGEN DATA](#)

In addition, an abnormal value is identified by a visual check, and the data after visual QC is released.

**Note**

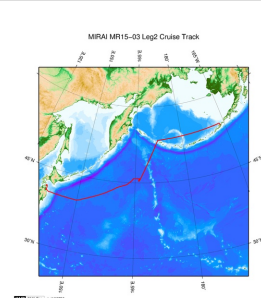
(1) In this cruise, there is extra data (turbidity, fluorescence intensity, dissolved oxygen obtained by RINKO sensor) in additional to temperature, salinity, dissolved oxygen obtained by OPTODE sensor that has been opened to the public. Please contact us from "Contact Us" above if necessary.

(2) The drift that exceeded the sensor specification (0.003PSU/month) turned out from the comparison between analysis data and the sensor data about the salinity data. Please see calibration information for details.

[Calibration Information](#)

**Figure: The comparison between analysis data and the sensor data**

**Related Information**



[Enlarge Image](#)

**MR15-03 Leg2**

Ship Name: MIRAI

Period: 2015-10-09 - 2015-10-21

Chief Scientist: Shigeto Nishino (JAMSTEC)

Project Name: [Arctic Ocean Climate System Research]

Proposal ▶ Observational studies on the Arctic Ocean climate and ecosystem variability

Title:

**Update History**

2017-06-29	An observation data was registered.
2016-04-23	An observation data was registered.

**JAMSTEC**

[Site Policy](#)

[Privacy Policy](#)

[Application for Data and Samples](#)

[Data Policy](#)

[What's New](#)

[Update History](#)

[Feeds](#)

**Lists**

[Publication List](#)

[Amount of Public Info.](#)

**Data**

[Map Search](#)

[Data Tree](#)

[Detailed Search](#)

**Information of the Ships**

[NATSUSHIMA](#)

[KAIYO](#)

[YOKOSUKA](#)

[MIRAI](#)

[KAIREI](#)

[CHIKYU](#)

[KAIMEI](#)

[SHINSEI MARU](#)

[HAKUHO MARU](#)

**Information of the Submersibles**

[KAIKO](#)

[SHINKAI 2000](#)

[SHINKAI 6500](#)

[DEEP TOW](#)

[HYPER-DOLPHIN](#)

[URASHIMA](#)

[YOKOSUKA DEEP TOW](#)

[6K Camera DEEP TOW](#)

[6K Sonar DEEP TOW](#)

[KM-ROV](#)

[POWER GRAB](#)

[SAMPLER \(SHELL\)](#)

[POWER GRAB](#)

[SAMPLER \(CLOW\)](#)

[BMS](#)

**Go to a Cruise Information**

Cruise ID:

**Go to a Dive Information**

Dive ID:

Copyright 2011 Japan Agency for Marine-Earth Science and Technology



**JAMSTEC**

国立研究開発法人  
海洋研究開発機構  
JAPAN AGENCY FOR MARINE-EARTH SCIENCE AND TECHNOLOGY

## MIRAI MR15-03 Leg2 Underway Thermosalinograph

Last Modified: 2017-06-29

[ReadMe](#) [Observation Data](#) [Data Format](#)

Cruise ID: [MR15-03 Leg2](#)

Underway Thermosalinograph: Processed (DMO)-QCed

Data Policy: [JAMSTEC](#)

### TSG DMO

#### Format Description for the QCed Data

Each data file contains one line header and daily observation data.

#### Header part

No.	Column	Content	Format	Remarks
1	1	Header ID	a1	fixed as '#'
2	3 - 6	Data ID	a4	TSG
3	8 - 22	Cruise ID	a15	e.g. MRYX-XX_legx
4	68 - 71	Number of data lines	i4	
5	72 - 73	Terminator	-	CR+LF

#### Data part

No.	Column	Content	Unit	Format	Remarks
1	1 - 8	Date	-	i8	YYYYMMDD (UTC)
2	10 - 13	Time	-	i4	hhmm (UTC)
3	15 - 23	Latitude	-	i2,a1,f5.2,a1	dd-mm.mmN(S)
4	25 - 34	Longitude	-	i3,a1,f5.2,a1	ddd-mm.mmE(W)
5	35 - 45	Temperature	deg-C	f11.3	ITS-90
6	46 - 56	Salinity	PSU	f11.3	PSS-78
7	57 - 67	Dissolved oxygen	μmol/kg	f11.1	
8	68 - 78	Flag	-	i11	1 - 6 : space 7 : flag of date/time 8 : flag of latitude/longitude 9 : flag of temperature 10 : flag of salinity 11 : flag of dissolved oxygen
9	79 - 80	Terminator	-	-	CR+LF

\* This format has been applied since MR10-04 cruise of R/V Mirai.

\* Temperature, Salinity, Dissolved oxygen: Missing value is presented by '-5', and error value is presented by '-9'.

#### Definition of Quality Control Flags

##### 1. Observed Level Flags

- 0 - accepted value
- 1 - range outlier ( outside of broad range check )
- A - doubtful value
- N - missing value

##### 2. Date and time flag (Thermosalinograph only)

- 0 - accepted date and time
- 1 - failed duplicate/missing/incorrect date and time

##### 3. Position flag (Thermosalinograph only)

- 0 - accepted position
- 1 - failed estimated ship speed check including missing/incorrect position

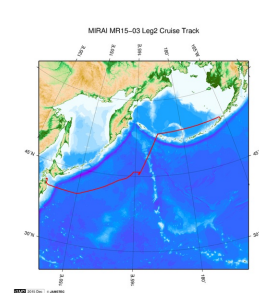
For details about range set of temperature, salinity and oxygen data, please refer the web site of NODC (National Oceanographic Data Center) from the following link for quality control procedure.

[QUALITY CONTROL AND PROCESSING OF HISTORICAL OCEANOGRAPHIC TEMPERATURE, SALINITY, AND OXYGEN DATA](#)

#### Sample Program

[ex\\_read2.f](#)

### Related Information



[Enlarge Image](#)

#### MR15-03 Leg2

Ship Name: MIRAI  
Period: 2015-10-09 - 2015-10-21  
Chief Scientist: Shigeto Nishino (JAMSTEC)  
Project Name: [Arctic Ocean Climate System Reaserch]  
Proposal: ▶ Observational studies on the Arctic Ocean climate and ecosystem variability  
Title:

### Update History

2017-06-29	An observation data was registerd.
2016-04-23	An observation data was registerd.

[Privacy Policy](#)  
[Application for Data and Samples](#)  
[Data Policy](#)  
**What's New**  
[Update History](#)  
[Feeds](#)

[Amount of Public Info.](#)  
**Data**  
[Map Search](#)  
[Data Tree](#)  
[Detailed Search](#)

[KAIYO](#)  
[YOKOSUKA](#)  
[MIRAI](#)  
[KAIREI](#)  
[CHIKYU](#)  
[KAIMEI](#)  
[SHINSEI MARU](#)  
[HAKUHO MARU](#)

[SHINKAI 2000](#)  
[SHINKAI 6500](#)  
[DEEP TOW](#)  
[HYPER-DOLPHIN](#)  
[URASHIMA](#)  
[YOKOSUKA DEEP TOW](#)  
[6K Camera DEEP TOW](#)  
[6K Sonar DEEP TOW](#)  
[KM-ROV](#)  
[POWER GRAB SAMPLER \(SHELL\)](#)  
[POWER GRAB SAMPLER \(CLOW\)](#)  
[BMS](#)

Cruise ID:

Go to a Dive Information

Dive ID:

Copyright 2011 Japan Agency for Marine-Earth Science and Technology



**JAMSTEC** 国立研究開発法人  
海洋研究開発機構  
JAPAN AGENCY FOR MARINE-EARTH SCIENCE AND TECHNOLOGY

## MIRAI MR15-03 Leg2 Underway Thermosalinograph

Last Modified: 2017-06-29

[ReadMe](#) [Observation Data](#) [Data Format](#)

Cruise ID: [MR15-03 Leg2](#)

Underway Thermosalinograph: Processed (DMO)-QCed

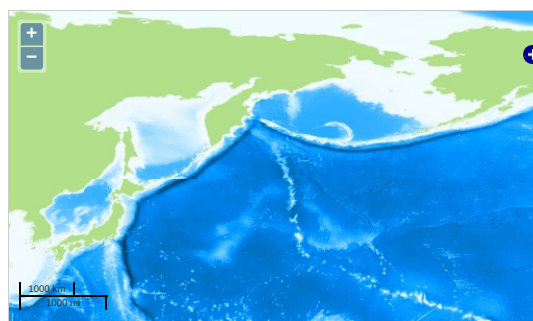
Data Policy: [JAMSTEC](#)

Observation Items: Temperature, Salinity, Dissolved oxygen

Science Keywords:

OCEANS > OCEAN CHEMISTRY > OXYGEN  
OCEANS > SALINITY/DENSITY > SALINITY  
> OCEAN > SEA SURFACE  
OCEANS TEMPERATURE TEMPERATURE

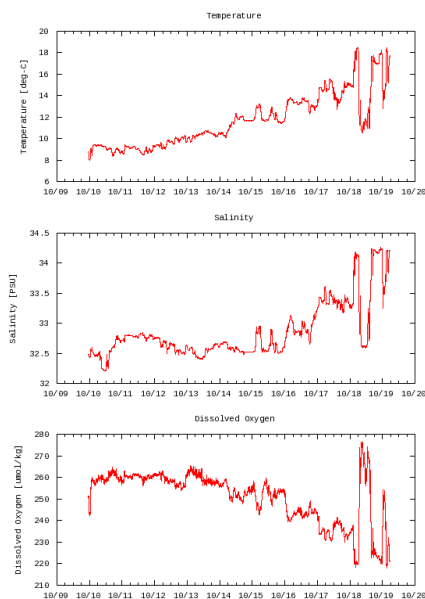
### Observation Map



— ... Observation Line — ... Navigation ● ... Observation, Dive Point, Hole

### Figures

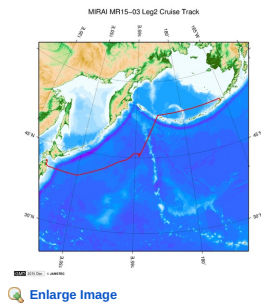
MR15-03 Leg2: Underway Thermosalino Graph



### Data List

[Add to Basket](#)

- ☐ File names
- ☐ 20151009.dat
  - ☐ 20151010.dat
  - ☐ 20151011.dat
  - ☐ 20151012.dat
  - ☐ 20151013.dat
  - ☐ 20151014.dat
  - ☐ 20151015.dat
  - ☐ 20151016.dat
  - ☐ 20151017.dat
  - ☐ 20151018.dat
  - ☐ 20151019.dat
  - ☐ ex\_read2.f (Sample Program)



#### MR15-03 Leg2

Ship Name: MIRAI

Period: 2015-10-09 - 2015-10-21

Chief Scientist: Shigeto Nishino (JAMSTEC)

Project Name: [Arctic Ocean Climate System Research]

Proposal ▶ Observational studies on the Arctic Ocean climate and ecosystem variability

Title:

#### Update History

2017-06-29	An observation data was registered.
2016-04-23	An observation data was registered.

#### JAMSTEC

Site Policy  
Privacy Policy  
Application for Data and Samples  
Data Policy

What's New  
Update History  
Feeds

#### Lists

Publication List  
Amount of Public Info.

#### Data

Map Search  
Data Tree  
Detailed Search

#### Information of the Ships

NATSUSHIMA  
KAIYO  
YOKOSUKA  
MIRAI  
KAIREI  
CHIKYU  
KAIMEI  
SHINSEI MARU  
HAKUHO MARU

#### Information of the Submersibles

KAIKO  
SHINKAI 2000  
SHINKAI 6500  
DEEP TOW  
HYPER-DOLPHIN  
URASHIMA  
YOKOSUKA DEEP TOW  
6K Camera DEEP TOW  
6K Sonar DEEP TOW  
KM-ROV  
POWER GRAB  
SAMPLER (SHELL)  
POWER GRAB  
SAMPLER (CLOW)  
BMS

#### Go to a Cruise Information

Cruise ID:

#### Go to a Dive Information

Dive ID:

Copyright 2011 Japan Agency for Marine-Earth Science and Technology



**JAMSTEC**

国立研究開発法人  
海洋研究開発機構  
JAPAN AGENCY FOR MARINE-EARTH SCIENCE AND TECHNOLOGY