

MIRAI MR11-03 Turbidity

Last Modified: 2013-05-31

[ReadMe](#) [Observation Data](#)

Cruise ID: [MR11-03](#)

Turbidity: Processed (PI)

Data Policy: [JAMSTEC](#)

Observation Items:

Science Keywords:

Data Information

We analyzed the turbidity on seawater samples of Station A to C from the epicentral area of 2011 Tohoku-oki earthquake during MR11-3 in 2011.

Turbidity analysis were conducted by TR-55 (Kasahara Chemical Instruments Co.) onboard R/V Miral.

Formazine standard solution were used to make the calibration curve (unit: FTU).

Reported turbidities were the average value of three time repetition.

Cruise Report

http://www.godac.jamstec.go.jp/catalog/data/doc_catalog/media/MR11-03_all.pdf

For Using Data

Principal Investigator

Takuroh Noguchi (Kochi Univ. -> present address JAMSTEC)

Use Constraints

Contact to Investigator

Data Citation

Contact to Investigator

Instrument

Instrument:

TR-55

Instrument Information:

Refere to homepage of TR-55

(Kasahara Chemical Instruments Co.)

([http://www.krjpn.co.jp/handy/TR-](http://www.krjpn.co.jp/handy/TR-55.htm)

55.htm)



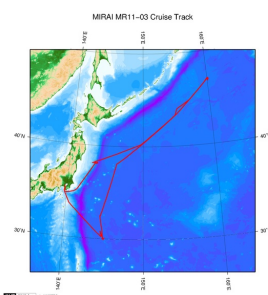
Sample

Seawater

Data Format

Excel file

Related Information



 [Enlarge Image](#)

MR11-03

Ship Name: MIRAI

Period: 2011-04-14 - 2011-05-05

Chief Scientist: Makio Honda (JAMSTEC)

Project Name: [Station K2, Station S1, Station KEO, Station KNOT]

Proposal ▶ Studies on the microbial-geochemical processes that regulate the operation of the biological pump in the subarctic and subtropical regions of the western North Pacific

Title:

Update History

2013-05-31 An observation data was registerd.

JAMSTEC
Site Policy
Privacy Policy
Application for Data and Samples
Data Policy

What's New
Update History
Feeds

Lists
Publication List
Amount of Public Info.

Data
Map Search
Data Tree
Detailed Search

Information of the Ships
NATSUSHIMA
KAIYO
YOKOSUKA
MIRAI
KAIREI
CHIKYU
KAIMEI
SHINSEI MARU
HAKUHO MARU

Information of the Submersibles
KAIKO
SHINKAI 2000
SHINKAI 6500
DEEP TOW
HYPER-DOLPHIN
URASHIMA
YOKOSUKA DEEP TOW
6K Camera DEEP TOW

Go to a Cruise Information

Cruise ID:

Go to a Dive Information

Dive ID:

6K Sonar DEEP TOW
KM-ROV
POWER GRAB SAMPLER
(SHELL)
POWER GRAB SAMPLER
(CLOW)
BMS

Copyright 2011 Japan Agency for Marine-Earth Science and
Technology



JAMSTEC 国立研究開発法人
海洋研究開発機構
JAPAN AGENCY FOR MARINE EARTH SCIENCE AND TECHNOLOGY

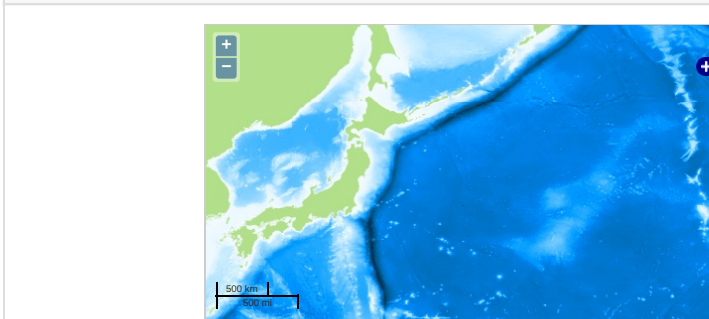
MIRAI MR11-03 Turbidity

Last Modified: 2013-05-31

[ReadMe](#) [Observation Data](#)

Cruise ID: **MR11-03**
Turbidity: Processed (PI)
Data Policy: [JAMSTEC](#)
Observation Items:
Science Keywords:

Observation Map



Imagery reproduced from ...

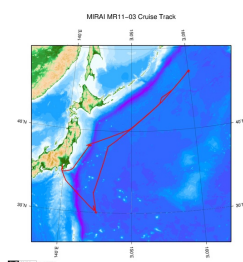
Data List

[Add to Basket](#)

File names

MR11-03_turbidity_noguchi.xls

Related Information



[Enlarge Image](#)

MR11-03

Ship Name: MIRAI
Period: 2011-04-14 - 2011-05-05
Chief Scientist: Makio Honda (JAMSTEC)
Project Name: [Station K2, Station S1, Station KEO, Station KNOT]
Proposal: [► Studies on the microbial-geochemical processes that regulate the operation of the biological pump in the subarctic and subtropical regions of the western North Pacific](#)
Title:

Update History

2013-05-31 An observation data was registerd.

JAMSTEC

[Site Policy](#)
[Privacy Policy](#)
[Application for Data and Samples](#)
[Data Policy](#)
[What's New](#)
[Update History](#)
[Feeds](#)

[Lists](#)
[Publication List](#)
[Amount of Public Info.](#)
[Data](#)
[Map Search](#)
[Data Tree](#)
[Detailed Search](#)

Information of the Ships

NATSUSHIMA
KAIYO
YOKOSUKA
MIRAI
KAIREI
CHIKYU
KAIMEI
SHINSEI MARU
HAKUHO MARU

Information of the Submersibles

KAIKO
SHINKAI 2000
SHINKAI 6500
DEEP TOW
HYPER-DOLPHIN
URASHIMA
YOKOSUKA DEEP TOW
6K Camera DEEP TOW
6K Sonar DEEP TOW
KM-ROV
POWER GRAB SAMPLER (SHELL)
POWER GRAB SAMPLER (CLOW)
BMS

Go to a Cruise Information

Cruise ID:

Go to a Dive Information

Dive ID:

