

MIRAI MR98-K02 Partial Pressure of CO2 (pCO2)

Last Modified: 2018-08-25

[ReadMe](#) [Observation Data](#) [Data Format](#)

Cruise ID: [MR98-K02](#)

Partial Pressure of CO2 (pCO2): Processed (PI)

Data Policy: [JAMSTEC](#)

Observation Items: CO2, Air temperature, Atmospheric pressure, Wind direction, Wind speed, Sea surface temperature, Sea surface salinity

Science Keywords:

OCEANS > OCEAN CHEMISTRY > CARBON DIOXIDE

Cruise Report

http://www.godac.jamstec.go.jp/catalog/data/doc_catalog/media/MR98-K02_all.pdf

[For Using Data](#)

Principal Investigator

Masao Ishii (Meteorological Research Institute)

Use Constraints

See [Terms and Conditions](#) about constrain of use.

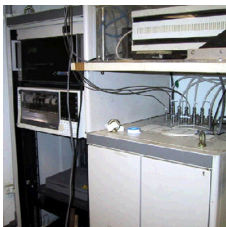
Data Citation

See [Terms and Conditions](#) about data citation.

Instrument

Instrument:

pCO2 measurement system (- MR10-06)



Information on pCO2 measurement

Instrument : pCO₂ measuring system ; Nippon ANS Ltd.

Method : Non-dispersive infrared gas analyzer (NDIR) / Equilibrator : showerhead-type

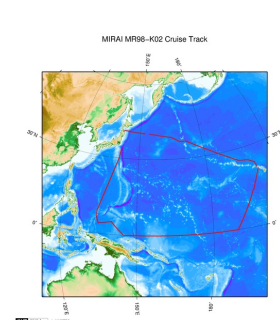
Precision : -

Reference Material/Calibration : MRI_87 scale

Please refer to Ishii et al. (2004) for calculation of sea-surface CO₂ concentration and for relationship between MRI_87 scale and WMO1985 mole fraction scale.

Ishii, M., S. Saito, T. Tokieda, T. Kawano, K. Matsumoto, and H. Y. Inoue (2004) Variability of Surface Layer CO₂ Parameters in the Western and Central Equatorial Pacific. Global Environmental Change in the Ocean and on Land, Eds., M. Shiyomi et al., pp. 59-94.

Related Information



[Enlarge Image](#)

MR98-K02

Ship Name: MIRAI

Period: 1998-12-22 - 1999-01-31

Chief Scientist: Takeshi Kawano (JAMSTEC)

Update History

2018-08-25	An observation data was registerd.
2013-01-25	An observation data was registerd.

JAMSTEC

[Site Policy](#)

[Privacy Policy](#)

[Application for Data and Samples](#)

[Data Policy](#)

[What's New](#)

[Update History](#)

[Feeds](#)

Lists

[Publication List](#)

[Amount of Public Info.](#)

Data

[Map Search](#)

[Data Tree](#)

[Detailed Search](#)

Information of the Ships

[NATSUSHIMA](#)

[KAIYO](#)

[YOKOSUKA](#)

[MIRAI](#)

[KAIREI](#)

[CHIKYU](#)

[KAIMEI](#)

[SHINSEI MARU](#)

[HAKUHO MARU](#)

Information of the Submersibles

[KAIKO](#)

[SHINKAI 2000](#)

[SHINKAI 6500](#)

[DEEP TOW](#)

[HYPER-DOLPHIN](#)

[URASHIMA](#)

[YOKOSUKA DEEP TOW](#)

[6K Camera DEEP TOW](#)

Go to a Cruise Information

Cruise ID:

Go to a Dive Information

Dive ID:

6K Sonar DEEP TOW
KM-ROV
POWER GRAB SAMPLER
(SHELL)
POWER GRAB SAMPLER
(CLOW)
BMS

Copyright 2011 Japan Agency for Marine-Earth Science and
Technology



JAMSTEC

国立研究開発法人
海洋研究開発機構
JAPAN AGENCY FOR MARINE EARTH SCIENCE AND TECHNOLOGY

MIRAI MR98-K02 Partial Pressure of CO₂ (pCO₂)

Last Modified: 2018-08-25

[ReadMe](#) [Observation Data](#) [Data Format](#)

Cruise ID: [MR98-K02](#)

Partial Pressure of CO₂ (pCO₂): Processed (PI)

Data Policy: [JAMSTEC](#)

pCO₂ FORMAT_M

Data Format

The file is in variable length, comma separated text file (csv) format.

The line starts with "#" is a comment line which contains version information and so on.

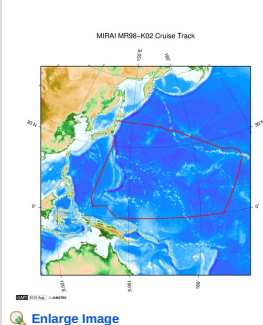
Column NO.	Column Heading	Comments
1	Ship	Ship name
2	Cruise	Cruise ID
3	Serial No.	Serial No.
4	Date	year (YYYY) in UTC
5		month (MM) in UTC
6		day (DD) in UTC
7	Time	hour (hh) in UTC
8		minute (mm) in UTC
9	Latitude	Latitude (degree) ; Positive in north
10	Longitude	Longitude (degree) ; degree in eastward (0 - 360)
11	xCO ₂ _Air	CO ₂ mixing ratio (ppm) in the air
12	F	Quality flag for xCO ₂ _Air
13	xCO ₂ _Sea	CO ₂ mixing ratio (ppm) in the sea surface water (*)
14	F	Quality flag for xCO ₂ _Sea
15	Wind_Dir	Wind direction (degree) ; Positive in clockwise from the north
16	Wind_Spd	Wind speed (m/s)
17	Atm_Prs	Barometric pressure (hPa)
18	Atm_Tmp.	Air temperature (degree-C)
19	SST	Sea surface temperature (degree-C)
20	F	Quality flag for SST
21	SSS	Sea surface salinity (PSU)
22	F	Quality flag for SSS
23	pH ₂ O	Vapor pressure of in-situ sea water (hPa)

Definition of Quality Control Flags

- 2 - Good
- 3 - Questionable
- 4 - Bad
- 5 - Not reported
- 9 - No data

*: Please refer to "Information on pCO₂ data" shown in ReadMe tab for xCO₂_Sea data calculation.

Related Information



[Enlarge Image](#)

MR98-K02

Ship Name: MIRAI
Period: 1998-12-22 - 1999-01-31
Chief Scientist: Takeshi Kawano (JAMSTEC)

Update History

2018-08-25	An observation data was registered.
2013-01-25	An observation data was registered.

JAMSTEC
[Site Policy](#)
[Privacy Policy](#)
[Application for Data and Samples](#)
[Data Policy](#)
What's New
[Update History](#)
[Feeds](#)

Lists
[Publication List](#)
[Amount of Public Info.](#)
Data
[Map Search](#)
[Data Tree](#)
[Detailed Search](#)

Information of the Ships
NATSUSHIMA
KAIO
YOKOSUKA
MIRAI
KAIREI
CHIKYU
KAIMEI
SHINSEI MARU
HAKUHO MARU

Information of the Submersibles
KAIKO
SHINKAI 2000
SHINKAI 6500
DEEP TOW
HYPER-DOLPHIN
URASHIMA
YOKOSUKA DEEP TOW
6K Camera DEEP TOW
6K Sonar DEEP TOW
KM-ROV
POWER GRAB
SAMPLER (SHELL)
POWER GRAB
SAMPLER (CLOW)
BMS

Go to a Cruise Information

Cruise ID:

Go to a Dive Information

Dive ID:

MIRAI MR98-K02 Partial Pressure of CO2 (pCO2)

Last Modified: 2018-08-25

[ReadMe](#) [Observation Data](#) [Data Format](#)

Cruise ID: [MR98-K02](#)

Partial Pressure of CO2 (pCO2): Processed (PI)

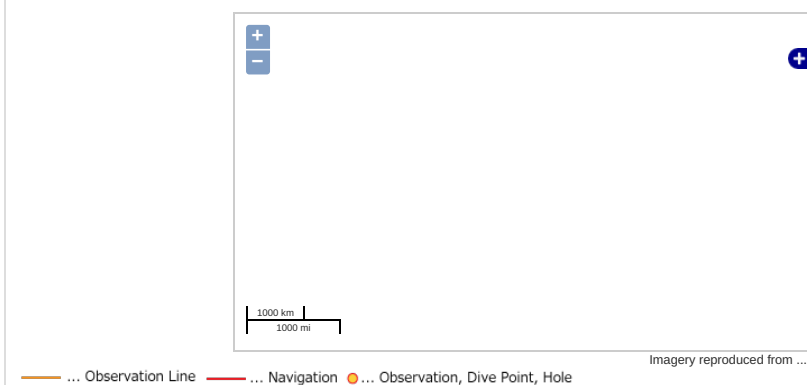
Data Policy: [JAMSTEC](#)

Observation Items: CO2, Air temperature, Atmospheric pressure, Wind direction, Wind speed, Sea surface temperature, Sea surface salinity

Science Keywords:

OCEANS > OCEAN CHEMISTRY > CARBON DIOXIDE

Observation Map

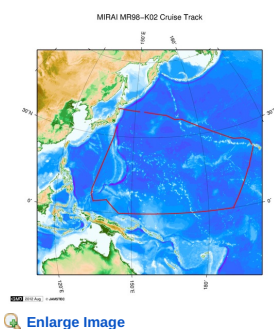


Data List

File names

☐ MR98-K02_pco2.zip

Related Information



[Enlarge Image](#)

MR98-K02

Ship Name: MIRAI

Period: 1998-12-22 - 1999-01-31

Chief Scientist: Takeshi Kawano (JAMSTEC)

Update History

2018-08-25	An observation data was registered.
2013-01-25	An observation data was registered.

JAMSTEC

[Site Policy](#)
[Privacy Policy](#)
[Application for Data and Samples](#)
[Data Policy](#)

[What's New](#)
[Update History](#)
[Feeds](#)

Lists

[Publication List](#)
[Amount of Public Info.](#)
[Data](#)
[Map Search](#)
[Data Tree](#)
[Detailed Search](#)

Information of the Ships

[NATSUSHIMA](#)
[KAIYO](#)
[YOKOSUKA](#)
[MIRAI](#)
[KAIREI](#)
[CHIKYU](#)
[KAIMEI](#)
[SHINSEI MARU](#)
[HAKUHO MARU](#)

Information of the Submersibles

[KAICO](#)
[SHINKAI 2000](#)
[SHINKAI 6500](#)
[DEEP TOW](#)
[HYPER-DOLPHIN](#)
[URASHIMA](#)
[YOKOSUKA DEEP TOW](#)
[6K Camera DEEP TOW](#)
[6K Sonar DEEP TOW](#)
[KM-ROV](#)
[POWER GRAB SAMPLER \(SHELL\)](#)
[POWER GRAB SAMPLER \(CLOW\)](#)
[BMS](#)

Go to a Cruise Information

Cruise ID:

Go to a Dive Information

Dive ID: