

MIRAI MR12-E02 Leg3 Underway Thermosalinograph

Last Modified: 2014-10-31

[ReadMe](#) [Observation Data](#) [Data Format](#)

Cruise ID: [MR12-E02 Leg3](#)

Underway Thermosalinograph: Processed (PI)

Data Policy: [JAMSTEC](#)

Observation Items: Temperature, Salinity, Dissolved oxygen

Science Keywords:

OCEANS > OCEAN CHEMISTRY > OXYGEN
OCEANS > SALINITY/DENSITY > SALINITY
OCEANS > OCEAN > SEA SURFACE
OCEANS TEMPERATURE TEMPERATURE
OCEANS > OCEAN OPTICS > FLUORESCENCE

Cruise Report

http://www.godac.jamstec.go.jp/catalog/data/doc_catalog/media/MR12-E02_leg3_all.pdf

[For Using Data](#)

Principal Investigator

Masahide Wakita (JAMSTEC)

Use Constraints

See [Terms and Conditions](#) about constrain of use.

Data Citation

See [Terms and Conditions](#) about data citation.

Instrument

Instrument:

Continuous sea surface water monitoring system (MR10-04 Leg1 - MR14-02)



Overview

Thermosalinograph measures the following surface parameters continuously.

- temperature
- salinity
- dissolved oxygen

Sea surface water is continuously pumped up at 4.5 meters depth to the sea surface monitoring laboratory and then flowed into each analysis equipment through a steel pipe and a vinyl-chloride pipe.

The flow rate of this system is controlled by some valves. Data are recorded in the personal computer.

System

- Temperature and Conductivity sensor : SBE-45, SEA-BIRD ELECTRONICS, INC.
- Bottom of ship thermometer : SBE 38, SEA-BIRD ELECTRONICS, INC.
- Dissolved oxygen sensor : OPTODE 3835, AANDERAA Instruments.
- Fluorometer: C3, TURNER DESIGNS.

Notice

When use a data sample and result, please inform parson about the data of a title, author, publication year, title, form of the publication and the medium of the publication.

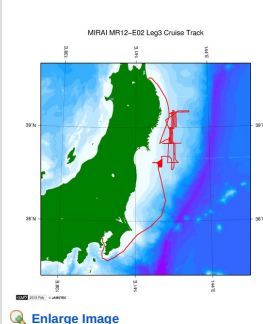
Contact parson about the data: Masahide Wakita

Organization: JAMSTEC Mutsu Institute for Oceanography

TEL: 81-175-45-1012

E-mail: mwakita@jamstec.go.jp

Related Information



MR12-E02 Leg3

Ship Name: MIRAI

Period: 2012-03-22 - 2012-03-30

Chief Scientist: Hidetaka Nomaki (JAMSTEC)

Project Name: [Tohoku Ecosystem-Associated Marine Sciences (TEAMS)]

Proposal Marine Ecosystems Investigation, Impact by the mega-earthquake (the 2011 Earthquake of the Pacific coast of Tohoku) and Tsunami: For Recovery and Rebuilding of Sanriku Fisheries Activities

[Enlarge Image](#)

Update History

2014-10-31 An observation data was registerd.

[Data Policy](#)

[Privacy Policy](#)

[Application for Data and Samples](#)

[Data Policy](#)

What's New

[Update History](#)

[Feeds](#)

[Publication List](#)

[Amount of Public Info.](#)

Data

[Map Search](#)

[Data Tree](#)

[Detailed Search](#)

[NATSUSHIMA](#)

[KAIYO](#)

[YOKOSUKA](#)

[MIRAI](#)

[KAIREI](#)

[CHIKYU](#)

[KAIMEI](#)

[SHINSEI MARU](#)

[HAKUHO MARU](#)

[KAIKO](#)

[SHINKAI 2000](#)

[SHINKAI 6500](#)

[DEEP TOW](#)

[HYPER-DOLPHIN](#)

[URASHIMA](#)

[YOKOSUKA DEEP TOW](#)

[6K Camera DEEP TOW](#)

[6K Sonar DEEP TOW](#)

[KM-ROV](#)

[POWER GRAB](#)

[SAMPLER \(SHELL\)](#)

[POWER GRAB](#)

[SAMPLER \(CLOW\)](#)

[BMS](#)

Cruise ID:

Go to a Dive Information

Dive ID:

Copyright 2011 Japan Agency for Marine-Earth Science and Technology



JAMSTEC

国立研究開発法人
海洋研究開発機構
JAPAN AGENCY FOR MARINE-EARTH SCIENCE AND TECHNOLOGY

MIRAI MR12-E02 Leg3 Underway Thermosalinograph

Last Modified: 2014-10-31

[ReadMe](#) [Observation Data](#) [Data Format](#)

Cruise ID: [MR12-E02 Leg3](#)

Underway Thermosalinograph: Processed (PI)

Data Policy: [JAMSTEC](#)

About data format

We provide the dataset as AWI Ocean Data View format (generic spreadsheet format).

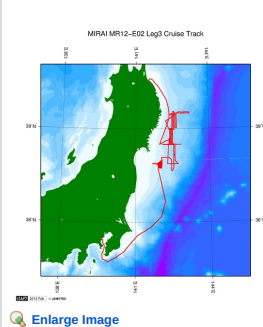
Ocean Data View : <http://odv.awi.de/>

Japanese Guide : http://www.jodc.go.jp/jodc_pub/digitalpub_j.html

Quality flag

- 0 - good
- 3 - questionable
- 4 - bad
- 9 - missing

Related Information



MR12-E02 Leg3

Ship Name: MIRAI

Period: 2012-03-22 - 2012-03-30

Chief Scientist: Hidetaka Nomaki (JAMSTEC)

Project Name: [Tohoku Ecosystem-Associated Marine Sciences (TEAMS)]

Proposal Marine Ecosystems Investigation, Impact by the mega-earthquake (the 2011 Earthquake of the

Title: Pacific coast of Tohoku) and Tsunami: For Recovery and Rebuilding of Sanriku Fisheries

Activities

[Enlarge Image](#)

Update History

2014-10-31 An observation data was registered.

JAMSTEC
Site Policy
Privacy Policy
Application for Data and Samples
Data Policy
What's New
Update History
Feeds

Lists
Publication List
Amount of Public Info.
Data
Map Search
Data Tree
Detailed Search

Information of the Ships
NATSUSHIMA
KAIYO
YOKOSUKA
MIRAI
KAIREI
CHIKYU
KAIMEI
SHINSEI MARU
HAKUHO MARU

Information of the Submersibles
KAIKO
SHINKAI 2000
SHINKAI 6500
DEEP TOW
HYPER-DOLPHIN
URASHIMA
YOKOSUKA DEEP TOW
6K Camera DEEP TOW
6K Sonar DEEP TOW
KM-ROV
POWER GRAB
SAMPLER (SHELL)
POWER GRAB
SAMPLER (CLOW)
BMS

Go to a Cruise Information

Cruise ID:

Go to a Dive Information

Dive ID:

MIRAI MR12-E02 Leg3 Underway Thermosalinograph

Last Modified: 2014-10-31

[ReadMe](#) [Observation Data](#) [Data Format](#)

Cruise ID: [MR12-E02 Leg3](#)

Underway Thermosalinograph: Processed (PI)

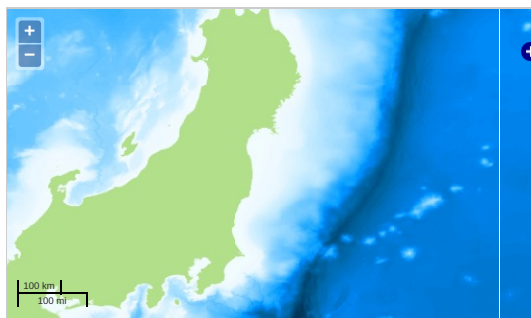
Data Policy: [JAMSTEC](#)

Observation Items: Temperature, Salinity, Dissolved oxygen

Science Keywords:

OCEANS > OCEAN CHEMISTRY > OXYGEN
OCEANS > SALINITY/DENSITY > SALINITY
> OCEAN > SEA SURFACE
OCEANS TEMPERATURE TEMPERATURE
OCEANS > OCEAN OPTICS > FLUORESCENCE

Observation Map



— ... Observation Line — ... Navigation ● ... Observation, Dive Point, Hole

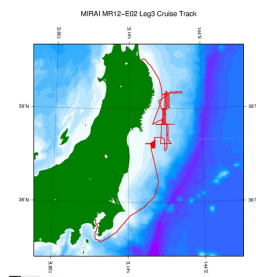
Imagery reproduced from ...

Data List

File names

☐ MR12-E02_Leg3_TSG.txt

Related Information



[Enlarge Image](#)

MR12-E02 Leg3

Ship Name: MIRAI

Period: 2012-03-22 - 2012-03-30

Chief Scientist: Hidetaka Nomaki (JAMSTEC)

Project Name: [Tohoku Ecosystem-Associated Marine Sciences (TEAMS)]

Proposal Title: Marine Ecosystems Investigation, Impact by the mega-earthquake (the 2011 Earthquake of the Pacific coast of Tohoku) and Tsunami: For Recovery and Rebuilding of Sanriku Fisheries Activities

Update History

2014-10-31 An observation data was registered.

JAMSTEC

[Site Policy](#)
[Privacy Policy](#)
[Application for Data and Samples](#)
[Data Policy](#)

[What's New](#)
[Update History](#)
[Feeds](#)

Lists

[Publication List](#)
[Amount of Public Info.](#)

Data

[Map Search](#)
[Data Tree](#)
[Detailed Search](#)

Information of the Ships

NATSUSHIMA
KAIYO
YOKOSUKA
MIRAI
KAIREI
CHIKYU
KAIMEI
SHINSEI MARU
HAKUHO MARU

Information of the Submersibles

KAIKO
SHINKAI 2000
SHINKAI 6500
DEEP TOW
HYPER-DOLPHIN
URASHIMA
YOKOSUKA DEEP TOW
6K Camera DEEP TOW
6K Sonar DEEP TOW
KM-ROV
POWER GRAB SAMPLER (SHELL)
POWER GRAB SAMPLER (CLOW)
BMS

Go to a Cruise Information

Cruise ID:

Go to a Dive Information

Dive ID: