

MIRAI MR05-03 Leg2 Partial Pressure of CO2 (pCO2)

Last Modified: 2018-06-26

[ReadMe](#) [Observation Data](#) [Data Format](#)

Cruise ID: [MR05-03 Leg2](#)

Partial Pressure of CO2 (pCO2): Processed (DMO)-QCed

Data Policy: [JAMSTEC](#)

Observation Items: CO2, Atmospheric pressure, Sea surface temperature, Sea surface salinity

Science Keywords:

OCEANS > OCEAN CHEMISTRY > CARBON DIOXIDE

Cruise Report

http://www.godac.jamstec.go.jp/catalog/data/doc_catalog/media/MR05-03_leg1-3_all.pdf

For Using Data

Principal Investigator

Data Management Office

JAMSTEC / BPPT joint cruise in the Indonesian waters.

Use Constraints

See [Terms and Conditions](#) about constrain of use.

Data Citation

See [Terms and Conditions](#) about data citation.

Instrument

Instrument:

pCO2 measurement system (- MR10-06)



Information on pCO2 measurement

Instrument : pCO₂ measuring system ; Nippon ANS Ltd.

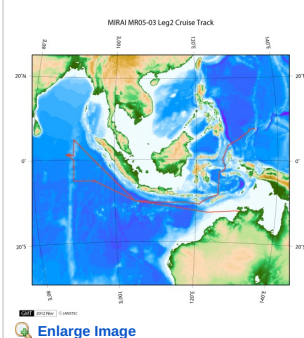
Method : Non-dispersive infrared gas analyzer (NDIR) ; BINOSTM / Equilibrator : showerhead-type

Precision : -

Reference Material/Calibration : -

[About data processing method](#)

Related Information



MR05-03 Leg2

Ship Name: MIRAI

Period: 2005-07-26 - 2005-08-24

Chief Scientist: Hideaki Hase (JAMSTEC)

Project Name: [Tropical Ocean Climate Study (TOCS)]

[Enlarge Image](#)

Update History

2018-06-26	An observation data was registerd.
2018-05-31	An observation data was registerd.

JAMSTEC

[Site Policy](#)
[Privacy Policy](#)
[Application for Data and Samples](#)
[Data Policy](#)

[What's New](#)
[Update History](#)
[Feeds](#)

Lists

[Publication List](#)
[Amount of Public Info.](#)

[Data](#)
[Map Search](#)
[Data Tree](#)
[Detailed Search](#)

Information of the Ships

[NATSUSHIMA](#)
[KAIYO](#)
[YOKOSUKA](#)
[MIRAI](#)
[KAIREI](#)
[CHIKYU](#)
[KAIMEI](#)
[SHINSEI MARU](#)
[HAKUHO MARU](#)

Information of the Submersibles

[KAIKO](#)
[SHINKAI 2000](#)
[SHINKAI 6500](#)
[DEEP TOW](#)
[HYPER-DOLPHIN](#)
[URASHIMA](#)
[YOKOSUKA DEEP TOW](#)
[6K Camera DEEP TOW](#)
[6K Sonar DEEP TOW](#)
[KM-ROV](#)
[POWER GRAB SAMPLER \(SHELL\)](#)
[POWER GRAB SAMPLER \(CLOW\)](#)

Go to a Cruise Information

Cruise ID:

Go to a Dive Information

Dive ID:



MIRAI MR05-03 Leg2 Partial Pressure of CO2 (pCO2)

Last Modified: 2018-06-26

[ReadMe](#) [Observation Data](#) [Data Format](#)

Cruise ID: [MR05-03 Leg2](#)

Partial Pressure of CO2 (pCO2): Processed (DMO)-QCed

Data Policy: [JAMSTEC](#)

Data Format

The file is in variable length, comma separated text file (csv) format.

The line starts with "#" is a comment line which contains version information and so on.

"-999" is missing data value.

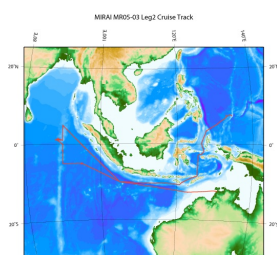
Column No.	Column Heading	Comments
1	Ship	Ship name
2	Cruise	Cruise ID
3	Serial No.	Serial No.
4	Date	year (YYYY) in UTC
5		month (MM) in UTC
6		day (DD) in UTC
7	Time	hour (HH) in UTC
8		minute (MM) in UTC
9	Latitude	Latitude (degree) ; Positive in north
10	Longitude	Longitude (degree) ; degree in eastward (0 - 360)
11	xCO2_Air	CO ₂ mixing ratio (ppm) in the atmosphere.
12	F	Quality flag for xCO2_Air
13	xCO2_Sea	CO ₂ mixing ratio (ppm) in the sea surface water.
14	F	Quality flag for xCO2_Sea
15	Atm_Prs	Barometric pressure (hPa)
17	Eq_Prs	Air pressure in equilibrator (hPa)
18	Eq_Tmp	Water temperature in equilibrator (degC)
19	SST	Sea surface temperature
20	F	Quality flag for SST
21	SSS	Sea surface salinity (PSU)
22	F	Quality flag for SSS
23	pH2O	In-situ vapor pressure of water (hPa)

Data quality flag

- 2 - Good
- 3 - Questionable
- 4 - Bad
- 5 - Not reported
- 9 - No data

*: Please refer [Sea-surface pCO₂ data analysis](#) for xCO2_Sea data calculation.

Related Information



[Enlarge Image](#)

MR05-03 Leg2

Ship Name: MIRAI
Period: 2005-07-26 - 2005-08-24
Chief Scientist: Hideaki Hase (JAMSTEC)
Project Name: [Tropical Ocean Climate Study (TOCS)]

Update History

2018-06-26	An observation data was registered.
2018-05-31	An observation data was registered.

JAMSTEC
[Site Policy](#)
[Privacy Policy](#)
[Application for Data and Samples](#)
[Data Policy](#)

[What's New](#)
[Update History](#)
[Feeds](#)

[Lists](#)
[Publication List](#)
[Amount of Public Info.](#)

[Data](#)
[Map Search](#)
[Data Tree](#)
[Detailed Search](#)

[Information of the Ships](#)
NATSUSHIMA
KAIYO
YOKOSUKA
MIRAI
KAIREI
CHIKYU
KAIMEI
SHINSEI MARU
HAKUHO MARU

[Information of the Submersibles](#)
KAIKO
SHINKAI 2000
SHINKAI 6500
DEEP TOW
HYPER-DOLPHIN
URASHIMA
YOKOSUKA DEEP TOW
6K Camera DEEP TOW
6K Sonar DEEP TOW
KM-ROV
POWER GRAB
SAMPLER (SHELL)
POWER GRAB
SAMPLER (CLOW)
BMS

Go to a Cruise Information

Cruise ID:

Go to a Dive Information

Dive ID:

MIRAI MR05-03 Leg2 Partial Pressure of CO2 (pCO2)

Last Modified: 2018-06-26

[ReadMe](#) [Observation Data](#) [Data Format](#)

Cruise ID: [MR05-03 Leg2](#)

Partial Pressure of CO2 (pCO2): Processed (DMO)-QCed

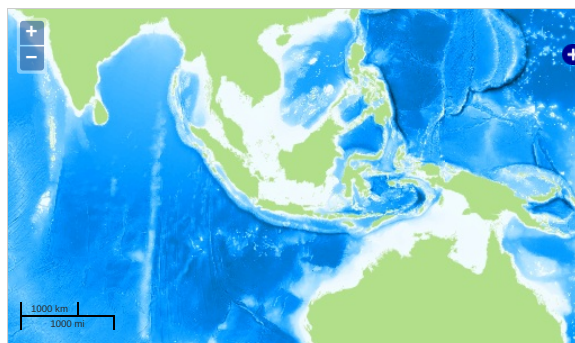
Data Policy: [JAMSTEC](#)

Observation Items: CO2, Atmospheric pressure, Sea surface temperature, Sea surface salinity

Science Keywords:

OCEANS > OCEAN CHEMISTRY > CARBON DIOXIDE

Observation Map



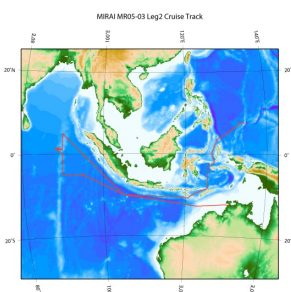
... Observation Line ... Navigation ... Observation, Dive Point, Hole

Data List

File names

☐ MR05-03_leg2_xCO2.csv

Related Information



[Enlarge Image](#)

MR05-03 Leg2

Ship Name: MIRAI

Period: 2005-07-26 - 2005-08-24

Chief Scientist: Hideaki Hase (JAMSTEC)

Project Name: [Tropical Ocean Climate Study (TOCS)]

Update History

2018-06-26	An observation data was registered.
2018-05-31	An observation data was registered.

JAMSTEC

[Site Policy](#)
[Privacy Policy](#)
[Application for Data and Samples](#)
[Data Policy](#)

[What's New](#)
[Update History](#)
[Feeds](#)

Lists

[Publication List](#)
[Amount of Public Info.](#)

Data

[Map Search](#)
[Data Tree](#)
[Detailed Search](#)

Information of the Ships

[NATSUSHIMA](#)
[KAIYO](#)
[YOKOSUKA](#)
[MIRAI](#)
[KAIREI](#)
[CHIKYU](#)
[KAIMEI](#)
[SHINSEI MARU](#)
[HAKUHO MARU](#)

Information of the Submersibles

[KAIKO](#)
[SHINKAI 2000](#)
[SHINKAI 6500](#)
[DEEP TOW](#)
[HYPER-DOLPHIN](#)
[URASHIMA](#)
[YOKOSUKA DEEP TOW](#)
[6K Camera DEEP TOW](#)
[6K Sonar DEEP TOW](#)
[KM-ROV](#)
[POWER GRAB SAMPLER \(SHELL\)](#)
[POWER GRAB SAMPLER \(CLOW\)](#)
[BMS](#)

Go to a Cruise Information

Cruise ID:

Go to a Dive Information

Dive ID: