

## MIRAI MR10-03 Leg2 Cell density and pigment concentrations for phytoplankton

Last Modified: 2012-09-28

[ReadMe](#) [Observation Data](#)

Cruise ID: [MR10-03 Leg2](#)

Cell density and pigment concentrations for phytoplankton : Processed (PI)

Data Policy: [JAMSTEC](#)

Observation Items:

Science Keywords:

### Data Information

Phytoplankton cell density : Synechococcus and pico- and nano-sized eucaryotes were analyzed by Flow Cytometry.

Phytoplankton pigment : phytoplankton pigments concentrations were analyzed following Zapata et al., 2000.

### Cruise Report

[http://www.godac.jamstec.go.jp/catalog/data/doc\\_catalog/media/MR10-03\\_leg1-2\\_all.pdf](http://www.godac.jamstec.go.jp/catalog/data/doc_catalog/media/MR10-03_leg1-2_all.pdf)

### For Using Data

#### Principal Investigator

Ken Furuya (Department of Aquatic Bioscience, The University of Tokyo)

#### Use Constraints

Please make preliminary contacts with us, before use.

#### Data Citation

Please make preliminary contacts with us, before use.

### Instrument

Instrument:

Pigment concentrations : LC-10AD  
and detector SPD-M10AV (Shimadzu)

Instrument Information:



Instrument:

Cell density : Flow Cytometer (PASIII,  
Partec)

Instrument Information:



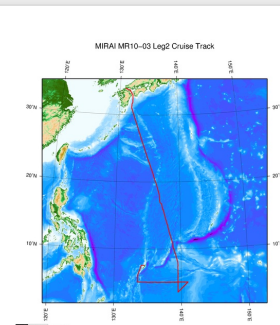
### Sample

Seawater samples

### Data Format

Excel file (.xls)

### Related Information



[Enlarge Image](#)

#### MR10-03 Leg2

Ship Name: MIRAI

Period: 2010-05-13 - 2010-06-27

Chief Scientist: Hiroyuki Yamada (JAMSTEC)

Project Name: [MJO Research]

Proposal ▶ Observational Study on Air-Sea Interaction in the Tropical Western Pacific Ocean

Title:

### Update History

2012-09-28 An observation data was registered.

#### JAMSTEC

[Site Policy](#)

[Privacy Policy](#)

[Application for Data and Samples](#)

[Data Policy](#)

[What's New](#)

[Update History](#)

[Feeds](#)

#### Lists

[Publication List](#)

[Amount of Public Info.](#)

#### Data

[Map Search](#)

[Data Tree](#)

[Detailed Search](#)

#### Information of the Ships

[NATSUSHIMA](#)

[KAIYO](#)

[YOKOSUKA](#)

[MIRAI](#)

[KAIREI](#)

[CHIKYU](#)

[KAIMEI](#)

[SHINSEI MARU](#)

[HAKUHO MARU](#)

#### Information of the Submersibles

[KAIKO](#)

[SHINKAI 2000](#)

[SHINKAI 6500](#)

[DEEP TOW](#)

[HYPER-DOLPHIN](#)

[URASHIMA](#)

[YOKOSUKA DEEP TOW](#)

[6K Camera DEEP TOW](#)

[6K Sonar DEEP TOW](#)

[KM-ROV](#)

[POWER GRAB SAMPLER \(SHELL\)](#)

[POWER GRAB SAMPLER \(CLOW\)](#)

[BMS](#)

#### Go to a Cruise Information

Cruise ID:

#### Go to a Dive Information

Dive ID:



## MIRAI MR10-03 Leg2 Cell density and pigment concentrations for phytoplankton

Last Modified: 2012-09-28

[ReadMe](#) [Observation Data](#)

Cruise ID: [MR10-03 Leg2](#)

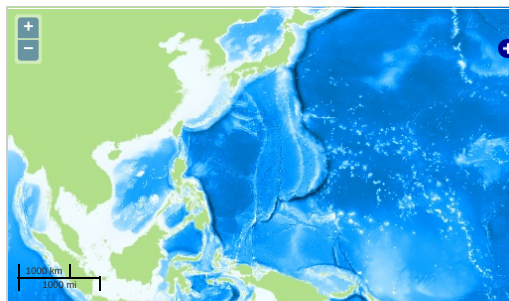
Cell density and pigment concentrations for phytoplankton: Processed (P1)

Data Policy: [JAMSTEC](#)

Observation Items:

Science Keywords:

### Observation Map



... Observation Line ... Navigation ... Observation, Dive Point, Hole

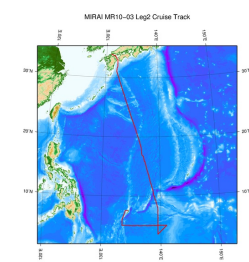
### Data List

[Add to Basket](#)

#### File names

☐ MR10-03\_leg2\_fcm.zip

### Related Information



[Enlarge Image](#)

#### MR10-03 Leg2

Ship Name: MIRAI

Period: 2010-05-13 - 2010-06-27

Chief Scientist: Hiroyuki Yamada (JAMSTEC)

Project Name: [MJO Research]

Proposal ▶ Observational Study on Air-Sea Interaction in the Tropical Western Pacific Ocean

Title:

### Update History

2012-09-28 An observation data was registered.

#### JAMSTEC

[Site Policy](#)

[Privacy Policy](#)

[Application for Data and Samples](#)

[Data Policy](#)

#### What's New

[Update History](#)

[Feeds](#)

#### Lists

[Publication List](#)

[Amount of Public Info.](#)

#### Data

[Map Search](#)

[Data Tree](#)

[Detailed Search](#)

#### Information of the Ships

[NATSUSHIMA](#)

[KAIYO](#)

[YOKOSUKA](#)

[MIRAI](#)

[KAIREI](#)

[CHIKYU](#)

[KAIMEI](#)

[SHINSEI MARU](#)

[HAKUHO MARU](#)

#### Information of the Submersibles

[KAIKO](#)

[SHINKAI 2000](#)

[SHINKAI 6500](#)

[DEEP TOW](#)

[HYPER-DOLPHIN](#)

[URASHIMA](#)

[YOKOSUKA DEEP TOW](#)

[6K Camera DEEP TOW](#)

[6K Sonar DEEP TOW](#)

[KM-ROV](#)

[POWER GRAB SAMPLER \(SHELL\)](#)

[POWER GRAB SAMPLER \(CLOW\)](#)

[BMS](#)

#### Go to a Cruise Information

Cruise ID:

#### Go to a Dive Information

Dive ID:

