

YOKOSUKA YK18-13C Water temperature and pressure at seafloor

Last Modified: 2021-10-27

[ReadMe](#) [Observation Data](#)

Cruise ID: [YK18-13C](#)

Water temperature and pressure at seafloor : Processed (PI)

Data Policy: [JAMSTEC](#)

Observation Items:

Science Keywords:

Data Information

Data of water temperature and pressure at seafloor. Instrument was equipped on the ocean bottom seismograph. Internal clock was calibrated after recovery.

Cruise Report

http://www.godac.jamstec.go.jp/catalog/data/doc_catalog/media/YK18-13C_all.pdf

For Using Data

Principal Investigator

Tsutomu Takahashi (JAMSTEC)

Use Constraints

See [Terms and Conditions](#) about constrain of use.

Data Citation

See [Terms and Conditions](#) about data citation.

Instrument

Instrument:

RBRduet T.D.

Instrument Information:

Compact data logger of temperature and pressure

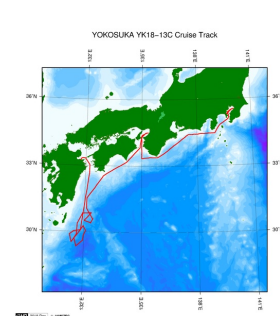


Data Format

*.rsk: Raw-data. This format can be read by the software Ruskin (<https://rbr-global.com/products/software>).

*.txt: Ascii file. Temperature (°C), pressure (dbar), sea pressure(dbar), depth (m)

Related Information



[Enlarge Image](#)

YK18-13C

Ship Name: YOKOSUKA

Period: 2018-09-29 - 2018-10-10

Chief Scientist: Tsutomu Takahashi (JAMSTEC)

Project Name: [Research project for earthquake and disaster prevention in the wide area around the Nankai Trough]

Proposal Title: Research project for compound disaster mitigation on the great earthquakes and tsunamis around the Nankai trough region

Update History

| | |
|------------|-------------------------------------|
| 2021-10-27 | An observation data was registered. |
| 2020-11-30 | An observation data was registered. |

JAMSTEC

[Site Policy](#)

[Privacy Policy](#)

[Application for Data and Samples](#)

[Data Policy](#)

[What's New](#)

[Update History](#)

[Feeds](#)

Lists

[Publication List](#)

[Amount of Public Info.](#)

Data

[Map Search](#)

[Data Tree](#)

[Detailed Search](#)

Information of the Ships

[NATSUSHIMA](#)

[KAIYO](#)

[YOKOSUKA](#)

[MIRAI](#)

[KAIREI](#)

[CHIKYU](#)

[KAIMEI](#)

[SHINSEI MARU](#)

[HAKUHO MARU](#)

Information of the Submersibles

[KAIKO](#)

[SHINKAI 2000](#)

[SHINKAI 6500](#)

[DEEP TOW](#)

[HYPER-DOLPHIN](#)

[URASHIMA](#)

[YOKOSUKA DEEP TOW](#)

[6K Camera DEEP TOW](#)

[6K Sonar DEEP TOW](#)

[KM-ROV](#)

[POWER GRAB SAMPLER \(SHELL\)](#)

[POWER GRAB SAMPLER \(CLOW\)](#)

[BMS](#)

Go to a Cruise Information

Cruise ID:

Go to a Dive Information

Dive ID:



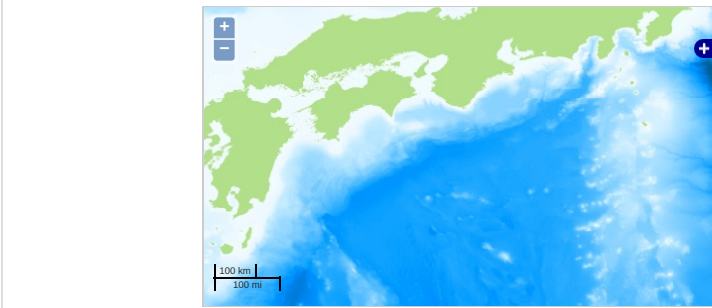
YOKOSUKA YK18-13C Water temperature and pressure at seafloor

Last Modified: 2021-10-27

ReadMe **Observation Data**

Cruise ID: **YK18-13C**
 Water temperature and pressure at seafloor. Processed (PI)
 Data Policy: [JAMSTEC](#)
 Observation Items:
 Science Keywords:

Observation Map

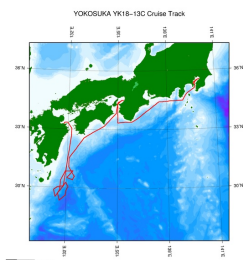


— ... Observation Line — ... Navigation ● ... Observation, Dive Point, Hole

Data List

- File names**
- 095934_20181008_1753.zip
 - 095934_20181008_1753_eng.zip
 - 095935_20181008_1412.zip
 - 095935_20181008_1412_eng.zip
 - 095937_20181008_1537.zip
 - 095937_20181008_1537_eng.zip
 - 095938_20181008_1309.zip
 - 095938_20181008_1309_eng.zip
 - C01_095936_20190915_0949.zip
 - C01_095936_20190915_0949_eng.zip
 - C02_095934_20190914_0934.zip
 - C02_095934_20190914_0934_eng.zip
 - C05_095935_20190914_1000.zip
 - C05_095935_20190914_1000_eng.zip
 - C06_095938_20190914_1031.zip
 - C06_095938_20190914_1031_eng.zip
 - position_and_dt.txt
 - positions_and_dt_20190914-15.zip

Related Information



YK18-13C
 Ship Name: YOKOSUKA
 Period: 2018-09-29 - 2018-10-10
 Chief Scientist: Tsutomu Takahashi (JAMSTEC)
 Project Name: [Research project for earthquake and disaster prevention in the wide area around the Nankai Trough]
 Proposal: Research project for compound disaster mitigation on the great earthquakes and tsunamis
 Title: around the Nankai trough region

Update History

- 2021-10-27 An observation data was registered.
- 2020-11-30 An observation data was registered.

JAMSTEC

- [Site Policy](#)
- [Privacy Policy](#)
- [Application for Data and Samples](#)
- [Data Policy](#)
- [What's New](#)
- [Update History](#)
- [Feeds](#)

- [Lists](#)
- [Publication List](#)
- [Amount of Public Info.](#)
- [Data](#)
- [Map Search](#)
- [Data Tree](#)
- [Detailed Search](#)

Information of the Ships

- [NATSUSHIMA](#)
- [KAIYO](#)
- [YOKOSUKA](#)
- [MIRAI](#)
- [KAIREI](#)
- [CHIKYU](#)
- [KAIMEI](#)
- [SHINSEI MARU](#)
- [HAKUHO MARU](#)

Information of the Submersibles

- [KAIKO](#)
- [SHINKAI 2000](#)
- [SHINKAI 6500](#)
- [DEEP TOW](#)
- [HYPER-DOLPHIN](#)
- [URASHIMA](#)
- [YOKOSUKA DEEP TOW](#)
- [BK Camera DEEP TOW](#)
- [BK Sonar DEEP TOW](#)
- [KM-ROV](#)
- [POWER GRAB SAMPLER \(SHELL\)](#)

Go to a Cruise Information

Cruise ID:

Go to a Dive Information

Dive ID:

POWER GRAB SAMPLER
(GLOW)
BMS

Copyright 2011 Japan Agency for Marine-Earth Science and Technology



JAMSTEC

国立研究開発法人
海洋研究開発機構

JAPAN AGENCY FOR MARINE-EARTH SCIENCE AND TECHNOLOGY