

## MIRAI MR15-03 Leg2 Radiocesium

Last Modified: 2018-01-23

[ReadMe](#) [Observation Data](#)

Cruise ID: [MR15-03 Leg2](#)

Radiocesium: Processed (PI)

Data Policy: [JAMSTEC](#)

Observation Items:

Science Keywords:

### Data Information

- (1) Instrument: Ge semi-conductor detector, Well-type GCW2022-7915-30-ULB, Canberra Industries, Inc.
- (2) Method: Concentration on Ammonum Phosphomolybdate and Platinate, gamma-ray measurement.
- (3) Uncertainty: about 5%
- (4) Standard/calibration: gamma-ray volume sources (Eckert & Ziegler Isotope Products) certificated by Deutscher Kalibrierdienst (DKD)

### Cruise Report

[http://www.godac.jamstec.go.jp/catalog/data/doc\\_catalog/media/MR15-03\\_leg2\\_all.pdf](http://www.godac.jamstec.go.jp/catalog/data/doc_catalog/media/MR15-03_leg2_all.pdf)

### For Using Data

#### Principal Investigator

Yuichiro Kumamoto (RCGC/JAMSTEC)

#### Use Constraints

None

#### Data Citation

None

### Instrument

Instrument:

Ge semi-conductor detector, Well-type  
GCW2022-7915-30-ULB, Canberra  
Industries, Inc.

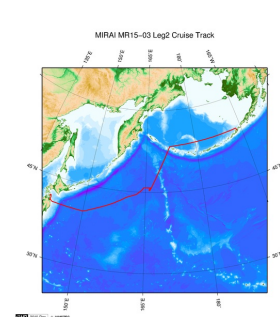
Instrument Information:



### Data Format

File Name: Cs\_datasheet\_171010  
Serial: Sample ID  
Cruise: Cruise  
Station: Station  
Sampling date (UTC): Sampling date (UTC)  
Latitude N: Latitude N  
Longitude E: Longitude E  
Depth (m): Depth (m)  
Cs-134 (Bq/m3): Cs-134 concentration  
Error(Bq/m3): Error for Cs-134 concentration  
D.L. (Bq/m3): Detection limit for Cs-134 concentration  
Cs-137 (Bq/m3): Cs-137 concentration  
Error(Bq/m3): Error for Cs-137 concentration  
D.L. (Bq/m3): Detection limit for Cs-137 concentration

### Related Information



 [Enlarge Image](#)

#### MR15-03 Leg2

Ship Name: MIRAI  
Period: 2015-10-09 - 2015-10-21  
Chief Scientist: Shigeto Nishino (JAMSTEC)  
Project Name: [Arctic Ocean Climate System Reaserch]  
Proposal [►](#) Observational s tudies on the Arctic Ocean c limate and e cosystem v ariability  
Title:

### Update History

2018-01-23	An observation data was registerd.
2017-11-30	An observation data was registerd.

#### JAMSTEC

[Site Policy](#)  
[Privacy Policy](#)  
[Application for Data and Samples](#)  
[Data Policy](#)

[What's New](#)  
[Update History](#)  
[Feeds](#)

#### Lists

[Publication List](#)  
[Amount of Public Info.](#)

#### Data

[Map Search](#)  
[Data Tree](#)  
[Detailed Search](#)

#### Information of the Ships

[NATSUSHIMA](#)  
[KAIYO](#)  
[YOKOSUKA](#)  
[MIRAI](#)  
[KAIREI](#)  
[CHIKYU](#)  
[KAIMEI](#)  
[SHINSEI MARU](#)  
[HAKUHO MARU](#)

#### Information of the Submersibles

[KAIKO](#)  
[SHINKAI 2000](#)  
[SHINKAI 6500](#)  
[DEEP TOW](#)  
[HYPER-DOLPHIN](#)  
[URASHIMA](#)  
[YOKOSUKA DEEP TOW](#)  
[6K Camera DEEP TOW](#)  
[6K Sonar DEEP TOW](#)  
[KM-ROV](#)  
[POWER GRAB SAMPLER \(SHELL\)](#)  
[POWER GRAB SAMPLER \(CLOW\)](#)  
[BMS](#)

#### Go to a Cruise Information

Cruise ID:

#### Go to a Dive Information

Dive ID:

Copyright 2011 Japan Agency for Marine-Earth Science and Technology



**JAMSTEC** 国立研究開発法人  
海洋研究開発機構  
JAPAN AGENCY FOR MARINE-EARTH SCIENCE AND TECHNOLOGY

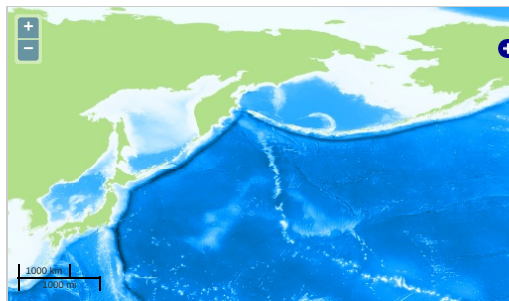
## MIRAI MR15-03 Leg2 Radiocesium

Last Modified: 2018-01-23

[ReadMe](#) [Observation Data](#)

Cruise ID: **MR15-03 Leg2**  
Radiocesium: Processed (PI)  
Data Policy: [JAMSTEC](#)  
Observation Items:  
Science Keywords:

### Observation Map



— ... Observation Line — ... Navigation ● ... Observation, Dive Point, Hole

Imagery reproduced from ...

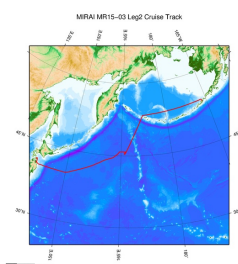
### Data List

[Add to Basket](#)

#### File names

☐ MR15-03\_Cs\_datasheet\_171010.xls

### Related Information



[Enlarge Image](#)

#### MR15-03 Leg2

Ship Name: MIRAI  
Period: 2015-10-09 - 2015-10-21  
Chief Scientist: Shigeto Nishino (JAMSTEC)  
Project Name: [Arctic Ocean Climate System Research]  
Proposal: ▶ Observational studies on the Arctic Ocean climate and ecosystem variability  
Title:

### Update History

2018-01-23	An observation data was registered.
2017-11-30	An observation data was registered.

#### JAMSTEC

[Site Policy](#)  
[Privacy Policy](#)  
[Application for Data and Samples](#)  
[Data Policy](#)

#### What's New

[Update History](#)  
[Feeds](#)

#### Lists

[Publication List](#)  
[Amount of Public Info.](#)

#### Data

[Map Search](#)  
[Data Tree](#)  
[Detailed Search](#)

#### Information of the Ships

NATSUSHIMA  
KAIYO  
YOKOSUKA  
MIRAI  
KAIREI  
CHIKYU  
KAIMEI  
SHINSEI MARU  
HAKUHO MARU

#### Information of the Submersibles

KAIKO  
SHINKAI 2000  
SHINKAI 6500  
DEEP TOW  
HYPER-DOLPHIN  
URASHIMA  
YOKOSUKA DEEP TOW  
6K Camera DEEP TOW  
6K Sonar DEEP TOW  
KM-ROV  
POWER GRAB SAMPLER (SHELL)  
POWER GRAB SAMPLER (CLOW)  
BMS

#### Go to a Cruise Information

Cruise ID:

#### Go to a Dive Information

Dive ID: