

KAIREI KR02-16 Gravity

Last Modified: 2019-07-09

ReadMe

Cruise ID: [KR02-16](#)

Gravity: Raw

Data Policy: [JAMSTEC](#)

Observation Items: Relative gravity

Science Keywords:

OCEANS > MARINE GEOPHYSICS > MARINE GRAVITY FIELD
SOLID EARTH > GEODETICS/GRAVITY > GRAVITY

Cruise Report

http://www.godac.jamstec.go.jp/catalog/data/doc_catalog/media/KR02-16_all.pdf

For Using Data

Principal Investigator

Data Management Office

Use Constraints

See [Terms and Conditions](#) about constrain of use.

Data Citation

See [Terms and Conditions](#) about data citation.

Instrument

Instrument:

Shipboard gravimeter (- KR16-07)



Instrument:

Microgravimeter (- KR07-18)



Measurement System

(1) Shipboard gravity meter

The system consists of two main assemblies; the gyro-stabilized platform including the gravity sensor and the data handling & control system.

Manufacturer : BODENSEEWERK

Model : KSS 31

Measuring range : 10,000 mGal

Accuracy : 1.0 mGal

Drift rate : < 3 mGal/month

Installation : Gravity meter room

Reference:"INSTRUCTION MANUAL for MARINE/AIR GRAVITYMETER SYSTEM KSS 31", Bodenseewerk 1996

(2) Portable gravity meter

The portable gravity meter consists of two modules; the data acquisition/control module and the gravity sensor module. The gravity sensor is enclosed in a thermostatically controlled vacuum chamber. The portable gravity meter is used to calculate the absolute gravity of the port with reference to the gravity station of the Japan Gravity Standardization Net of the Geographical Survey Institute of Japan.

Manufacturer : SCINTREX

Model : CG-3M

Measurement range : 7,000 mGal

Standard deviation : 0.01 mGal

Drift rate : < 0.02 mGal/day

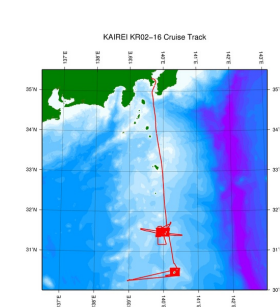
Reference:"CG-3M AUTOGRAV AUTOMATED GRAVITY METER OPERATOR MANUAL", SCINTREX

About this data

We have no plan to process the data due to equipment failure etc.

Please refer to the "Contact Us" if you wish to use the raw data.

Related Information



[Enlarge Image](#)

KR02-16

Ship Name: KAIREI

Period: 2002-12-10 - 2002-12-27

Chief Scientist: Yoshihiko Tamura (JAMSTEC)

Update History	
2019-07-09	An observation data was registerd.
2017-09-06	An observation data was registerd.
2012-12-27	An observation data was registerd.

JAMSTEC

Site Policy

Privacy Policy

Application for Data and Samples

Data Policy

What's New

Update History

Feeds

Lists

Publication List

Amount of Public Info.

Data

Map Search

Data Tree

Detailed Search

Information of the Ships

NATSUSHIMA

KAIYO

YOKOSUKA

MIRAI

KAIREI

CHIKYU

KAIMEI

SHINSEI MARU

HAKUHO MARU

Information of the Submersibles

KAIKO

SHINKAI 2000

SHINKAI 6500

DEEP TOW

HYPER-DOLPHIN

URASHIMA

YOKOSUKA DEEP TOW

6K Camera DEEP TOW

6K Sonar DEEP TOW

KM-ROV

POWER GRAB SAMPLER

(SHELL)

POWER GRAB SAMPLER

(CLOW)

BMS

Go to a Cruise Information

Cruise ID:

Go

Go to a Dive Information

Dive ID:

Go

Copyright 2011 Japan Agency for Marine-Earth Science and Technology



JAMSTEC

国立研究開発法人
海洋研究開発機構
JAPAN AGENCY FOR MARINE-EARTH SCIENCE AND TECHNOLOGY

KAIREI KR02-16 Gravity

Last Modified: 2019-07-09

ReadMe

Cruise ID: [KR02-16](#)

Gravity: Raw

Data Policy: [JAMSTEC](#)

Observation Items: Relative gravity

Science Keywords:

OCEANS > MARINE GEOPHYSICS > MARINE GRAVITY FIELD
SOLID EARTH > GEODETICS/GRAVITY > GRAVITY

Cruise Report

http://www.godac.jamstec.go.jp/catalog/data/doc_catalog/media/KR02-16_all.pdf

For Using Data

Principal Investigator

Data Management Office

Use Constraints

See [Terms and Conditions](#) about constrain of use.

Data Citation

See [Terms and Conditions](#) about data citation.

Instrument

Instrument:

Shipboard gravimeter (- KR16-07)



Instrument:

Microgravimeter (- KR07-18)



Measurement System

(1) Shipboard gravity meter

The system consists of two main assemblies; the gyro-stabilized platform including the gravity sensor and the data handling & control system.

Manufacturer : BODENSEEWERK

Model : KSS 31

Measuring range : 10,000 mGal

Accuracy : 1.0 mGal

Drift rate : < 3 mGal/month

Installation : Gravity meter room

Reference:"INSTRUCTION MANUAL for MARINE/AIR GRAVITYMETER SYSTEM KSS 31", Bodenseewerk 1996

(2) Portable gravity meter

The portable gravity meter consists of two modules; the data acquisition/control module and the gravity sensor module. The gravity sensor is enclosed in a thermostatically controlled vacuum chamber. The portable gravity meter is used to calculate the absolute gravity of the port with reference to the gravity station of the Japan Gravity Standardization Net of the Geographical Survey Institute of Japan.

Manufacturer : SCINTREX

Model : CG-3M

Measurement range : 7,000 mGal

Standard deviation : 0.01 mGal

Drift rate : < 0.02 mGal/day

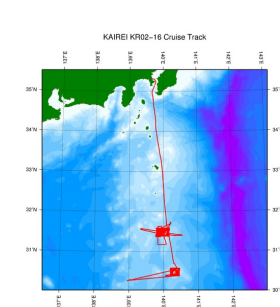
Reference:"CG-3M AUTOGRAV AUTOMATED GRAVITY METER OPERATOR MANUAL", SCINTREX

About this data

We have no plan to process the data due to equipment failure etc.

Please refer to the "Contact Us" if you wish to use the raw data.

Related Information



[Enlarge Image](#)

KR02-16

Ship Name: KAIREI

Period: 2002-12-10 - 2002-12-27

Chief Scientist: Yoshihiko Tamura (JAMSTEC)

Update History	
2019-07-09	An observation data was registerd.
2017-09-06	An observation data was registerd.
2012-12-27	An observation data was registerd.

[JAMSTEC](#)
[Site Policy](#)
[Privacy Policy](#)
[Application for Data and Samples](#)
[Data Policy](#)
[What's New](#)
[Update History](#)
[Feeds](#)

[Lists](#)
[Publication List](#)
[Amount of Public Info.](#)
Data
[Map Search](#)
[Data Tree](#)
[Detailed Search](#)

[Information of the Ships](#)
[NATSUSHIMA](#)
[KAIYO](#)
[YOKOSUKA](#)
[MIRAI](#)
[KAIREI](#)
[CHIKYU](#)
[KAIMEI](#)
[SHINSEI MARU](#)
[HAKUHO MARU](#)

[Information of the Submersibles](#)
[KAIKO](#)
[SHINKAI 2000](#)
[SHINKAI 6500](#)
[DEEP TOW](#)
[HYPER-DOLPHIN](#)
[URASHIMA](#)
[YOKOSUKA DEEP TOW](#)
[6K Camera DEEP TOW](#)
[6K Sonar DEEP TOW](#)
[KM-ROV](#)
[POWER GRAB SAMPLER \(SHELL\)](#)
[POWER GRAB SAMPLER \(CLOW\)](#)
[BMS](#)

[Go to a Cruise Information](#)

Cruise ID:

[Go to a Dive Information](#)

Dive ID:

Copyright 2011 Japan Agency for Marine-Earth Science and Technology



JAMSTEC
 国立研究開発法人
 海洋研究開発機構
 JAPAN AGENCY FOR MARINE-EARTH SCIENCE AND TECHNOLOGY

KAIREI KR02-16 Gravity

Last Modified: 2019-07-09

ReadMe

Cruise ID: **KR02-16**

Gravity: Raw

Data Policy: **JAMSTEC**

Observation Items: Relative gravity

Science Keywords:

OCEANS > MARINE GEOPHYSICS > MARINE GRAVITY FIELD
SOLID EARTH > GEODETICS/GRAVITY > GRAVITY

Cruise Report

http://www.godac.jamstec.go.jp/catalog/data/doc_catalog/media/KR02-16_all.pdf

For Using Data

Principal Investigator

Data Management Office

Use Constraints

See [Terms and Conditions](#) about constrain of use.

Data Citation

See [Terms and Conditions](#) about data citation.

Instrument

Instrument:

Shipboard gravimeter (- KR16-07)



Instrument:

Microgravimeter (- KR07-18)



Measurement System

(1) Shipboard gravity meter

The system consists of two main assemblies; the gyro-stabilized platform including the gravity sensor and the data handling & control system.

Manufacturer : BODENSEEWERK

Model : KSS 31

Measuring range : 10,000 mGal

Accuracy : 1.0 mGal

Drift rate : < 3 mGal/month

Installation : Gravity meter room

Reference: "INSTRUCTION MANUAL for MARINE/AIR GRAVITYMETER SYSTEM KSS 31", Bodenseewerk 1996

(2) Portable gravity meter

The portable gravity meter consists of two modules; the data acquisition/control module and the gravity sensor module. The gravity sensor is enclosed in a thermostatically controlled vacuum chamber. The portable gravity meter is used to calculate the absolute gravity of the port with reference to the gravity station of the Japan Gravity Standardization Net of the Geographical Survey Institute of Japan.

Manufacturer : SCINTREX

Model : CG-3M

Measurement range : 7,000 mGal

Standard deviation : 0.01 mGal

Drift rate : < 0.02 mGal/day

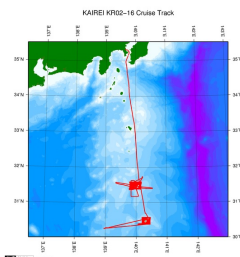
Reference: "CG-3M AUTOGRAV AUTOMATED GRAVITY METER OPERATOR MANUAL", SCINTREX

About this data

We have no plan to process the data due to equipment failure etc.

Please refer to the "Contact Us" if you wish to use the raw data.

Related Information



[Enlarge Image](#)

KR02-16

Ship Name: KAIKEI

Period: 2002-12-10 - 2002-12-27

Chief Scientist: Yoshihiko Tamura (JAMSTEC)

Update History

2019-07-09	An observation data was registered.
2017-09-06	An observation data was registered.
2012-12-27	An observation data was registered.

JAMSTEC

Site Policy

Privacy Policy

Application for Data and

Samples

Data Policy

Lists

Publication List

Amount of Public Info.

Data

Map Search

Information of the Ships

NATSUSHIMA

KAIYO

YOKOSUKA

MIRAI

Information of the Submersibles

KAIKO

SHINKAI 2000

SHINKAI 6500

DEEP TOW

Go to a Cruise Information

Cruise ID:

Go to a Dive Information

What's New
Update History
Feeds

Data Tree
Detailed Search

KAIREI
CHIKYU
KAIMEI
SHINSEI MARU
HAKUHO MARU

HYPER-DOLPHIN
URASHIMA
YOKOSUKA DEEP TOW
6K Camera DEEP TOW
6K Sonar DEEP TOW
KM-ROV
POWER GRAB SAMPLER
(SHELL)
POWER GRAB SAMPLER
(CLOW)
BMS

Dive ID: