

## MIRAI MR03-K03 Leg1 Conductivity-Temperature-Depth Profiler (CTD)

Last Modified: 2017-06-22

[ReadMe](#) [Observation Data](#) [Data Format](#)

Cruise ID: [MR03-K03 Leg1](#)

Conductivity-Temperature-Depth Profiler (CTD): Processed (DMO)-QCed

Data Policy: [JAMSTEC](#)

Observation Items: Pressure, Temperature, Salinity, Dissolved oxygen

Science Keywords:

OCEANS > OCEAN CHEMISTRY > OXYGEN  
OCEANS > OCEAN TEMPERATURE > WATER TEMPERATURE  
OCEANS > SALINITY/DENSITY > SALINITY

Cruise Report

[http://www.godac.jamstec.go.jp/catalog/data/doc\\_catalog/media/MR03-K03\\_leg1-2\\_all.pdf](http://www.godac.jamstec.go.jp/catalog/data/doc_catalog/media/MR03-K03_leg1-2_all.pdf)

### [For Using Data](#)

#### Principal Investigator

Data Management Office

JAMSTEC / BPPT joint cruise in the Indonesian waters.

#### Use Constraints

See [Terms and Conditions](#) about constrain of use.

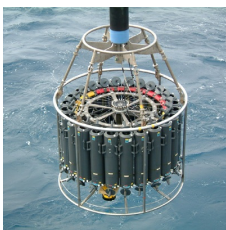
#### Data Citation

See [Terms and Conditions](#) about data citation.

### Instrument

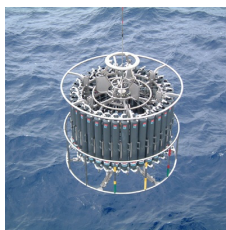
Instrument:

Water sampling system with CTD (30  
litters \* 24 bottles)



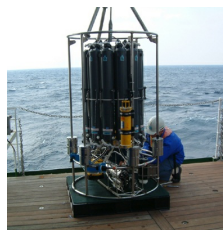
Instrument:

Water sampling system with CTD (12  
litters \* 36 bottles)



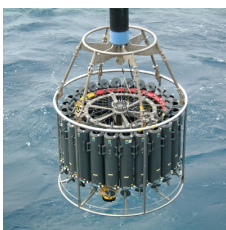
Instrument:

Water sampling system with CTD (12  
litters \* 12 bottles)



Instrument:

Conductivity temperature depth  
measurements (CTD)



### Overview

CTD(Conductivity-Temperature-Depth profiler) is used to observe the vertical profiles of temperature and conductivity.

Usually, this system is operated with multicylinder water sampler.

Observed signal is transmitted from sensor to the operation room on board using wire cable, and electric power is supplied from vessel to sensor.

Details of sensors attached to CTD system for MR03-K03 Leg1 cruise are presented in "System".

The following software, developed and supplied by the Sea-Bird Electronics, Inc., was used in MR03-K03 Leg1.

SEASAVE(ver 5.27b) for data acquisition

SEASOFT(ver 5.27b) for data processing

Data presented on this website is averaged over 1db.

### System

#### • Pressure sensor

Model : SBE9plus, Sea-Bird Electronics,Inc.

Serial number : 42423

Measurement range : up to 10500m

Accuracy : 0.015% F.S.

Resolution : 0.001% F.S.

#### • Temperature sensor

Model : SBE3, Sea-Bird Electronics,Inc.

Serial number : 031524

Measurement range : -5.0 to +35degC

Accuracy : 0.001degC

Resolution : 0.0002degC

#### • Salinity sensor

Model : SBE4, Sea-Bird Electronics,Inc.

Serial number : 041203

Measurement range : 0.0 to 7 S/m  
Accuracy : 0.0003 S/m  
Resolution : 0.00004 S/m

Sensors used in each cast is as follows.

Cast name	Serial number of sensor			
	Pressure	Temperature	Salinity	Dissolved Oxygen
C01s01	42423	031524	041203	-
C01s02	42423	031524	041203	-
C02s01	42423	031524	041203	-
C02s02	42423	031524	041203	-
C03s01	42423	031524	041203	-
C03s02	42423	031524	041203	-
C04s01	42423	031524	041203	-
C05s01	42423	031524	041203	-
C05s02	42423	031524	041203	-
C06s01	42423	031524	041203	-
C06s02	42423	031524	041203	-
C07s01	42423	031524	041203	-
C07s02	42423	031524	041203	-
C08s01	42423	031524	041203	-
C08s02	42423	031524	041203	-
C08s03	42423	031524	041203	-

Calibration Information

Calibration Information is as follows.

[Calibration Information](#)

Data processing

(1) Data processing sequence for SEASOFT is as follows;

command	function
datcnv	Convert raw data to engineering units, and store converted data in file.
wildedit	Mark a data value with badflag to eliminate wild points.
celltm	Perform conductivity thermal mass correction.
filter	Low-pass filter columns of data.
section	Extract rows of data from file.
loopedit	Mark a scan with badflag if scan fails pressure reversal or minimum velocity tests.
binavg	Average data, basing bins on pressure, depth, scan number, or time range.
derive	Calculate salinity, density, etc..
split	Split data in file into upcast and downcast files.

(2) Quality control

QCed data were added flag according to the NODC (National Oceanographic Data Center) quality control procedure.

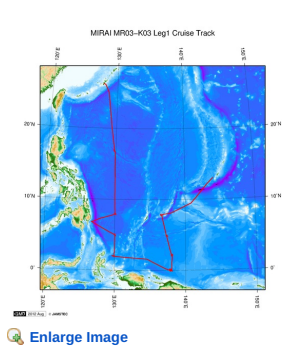
- 1) The gradient check of adjacent depth data
- 2) The density inversion check
- 3) The broad range check set up at given ocean space and depth

Please see the site of NODC of the following link for quality control procedure in detail.

[QUALITY CONTROL AND PROCESSING OF HISTORICAL OCEANOGRAPHIC TEMPERATURE, SALINITY, AND OXYGEN DATA](#)

In addition, an abnormal value is identified by a visual check, and the data after visual QC is released.

Related Information



**MR03-K03 Leg1**  
Ship Name: MIRAI  
Period: 2003-06-07 - 2003-06-29  
Chief Scientist: Hideaki Hase (JAMSTEC)  
Project Name: [Tropical Ocean Climate Study (TOCS)]

Update History

2017-06-22	An observation data was registerd.
2016-04-07	An observation data was registerd.
2014-08-20	An observation data was registerd.
2014-07-23	An observation data was registerd.
2014-02-06	An observation data was registerd.
2012-12-25	An observation data was registerd.

JAMSTEC  
Site Policy  
Privacy Policy  
Application for Data and Samples  
Data Policy  
What's New  
Update History  
Feeds

Lists  
Publication List  
Amount of Public Info.  
Data  
Map Search  
Data Tree  
Detailed Search

Information of the Ships  
NATSUSHIMA  
KAIYO  
YOKOSUKA  
MIRAI  
KAIREI  
CHIKYU  
KAIMEI  
SHINSEI MARU

Information of the Submersibles  
KAIKO  
SHINKAI 2000  
SHINKAI 6500  
DEEP TOW  
HYPER-DOLPHIN  
URASHIMA  
YOKOSUKA DEEP TOW

Go to a Cruise Information

Cruise ID:

Go to a Dive Information

Dive ID:

HAKUHO MARU

6K Camera DEEP TOW  
6K Sonar DEEP TOW  
KM-ROV  
POWER GRAB SAMPLER  
(SHELL)  
POWER GRAB SAMPLER  
(CLOW)  
BMS

Copyright 2011 Japan Agency for Marine-Earth Science and  
Technology



**JAMSTEC** 国立研究開発法人  
海洋研究開発機構  
JAPAN AGENCY FOR MARINE-EARTH SCIENCE AND TECHNOLOGY

## MIRAI MR03-K03 Leg1 Conductivity-Temperature-Depth Profiler (CTD)

Last Modified: 2017-06-22

[ReadMe](#) [Observation Data](#) [Data Format](#)

 Cruise ID: [MR03-K03 Leg1](#)

Conductivity-Temperature-Depth Profiler (CTD): Processed (DMO)-QCed

 Data Policy: [JAMSTEC](#)

### CTD DMO

#### Format Description for the Corrected Data

Provided in the Exchange Format of CCHDO (CLIVAR and Carbon Hydrographic Data Office). Please see the following link for details of Exchange Format.

[CCHDO | CLIVAR & Carbon Hydrographic Data Office](#)

Data in following cruise is not expressed with Exchange Format. Please see the site of each cruise for format.

MR02-K05 Leg1

MR04-05

#### Format Description for the QCed Data

Each data file contains one line header (meta data) followed by data lines for each cast.

The number of data lines are recorded in the header.

Header part

No.	Column	Content	Format	Remarks
1	1	Header ID	a1	fixed as '#'
2	3 - 6	Data ID	a4	CTD
3	8 - 22	Cruise ID	a15	MYYY-(K)XX(_legx)
4	24 - 31	Cast name	a8	
5	33 - 40	Date	i8	YYYYMMDD (UTC)
6	42 - 45	Time	i4	hhmm (UTC)
7	47 - 55	Latitude	i2,a1,f5.2,a1	dd-mm.mmN(S)
8	57 - 66	Longitude	i3,a1,f5.2,a1	ddd-mm.mmE(W)
9	68 - 71	Number of data lines	i4	
10	72 - 73	Terminator	-	CR+LF

Data part

No.	Column	Content	Unit	Format	Remarks
1	1 - 11	Pressure	dbar	f11.3	
2	12 - 22	Temperature	deg-C	f11.4	ITS-90
3	23 - 33	Salinity	PSU	f11.4	PSS-78
4	34 - 44	Dissolved oxygen	umol/kg	f11.3	
5	45 - 55	Flag	-	i11	1 - 7 : space 8 : flag of pressure 9 : flag of temperature 10 : flag of salinity 11 : flag of dissolved oxygen * reference : <a href="#">Definition of Quality Control Flags</a>
6	56 - 57	Terminator	-	-	CR+LF

Each contents of the data part is stored in 11 bytes.

Missing value is presented by '-5', and error value is presented by '-9'.

#### Definition of Quality Control Flags

##### 1. Depth Flags

- 0 - accepted value
- 1 - error in recorded depth ( same or less than previous depth )
- 2 - density inversion

##### 2. Observed Level Flags

- N - missing value
- 0 - accepted value
- 1 - range outlier ( outside of broad range check )
- 2 - failed inversion check
- 3 - failed gradient check
- 4 - zero anomaly
- 5 - failed combined gradient and inversion checks
- 6 - failed range and inversion checks
- 7 - failed range and gradient checks
- 8 - failed range and zero anomaly checks
- 9 - failed range and combined gradient and inversion checks
- A - failed visual check

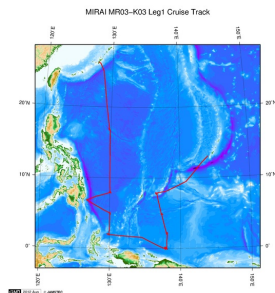
QCed data were added flag according to the NODC (National Oceanographic Data Center) quality control procedure, additionally visually checked. Please see the site of NODC of the following link for quality control procedure.

[QUALITY CONTROL AND PROCESSING OF HISTORICAL OCEANOGRAPHIC TEMPERATURE, SALINITY, AND OXYGEN DATA](#)

#### Sample Program

[ex\\_read2.f](#)

#### Related Information



[Enlarge Image](#)

#### MR03-K03 Leg1

Ship Name: MIRAI

Period: 2003-06-07 - 2003-06-29

Chief Scientist: Hideaki Hase (JAMSTEC)

Project Name: [Tropical Ocean Climate Study (TOCS)]

#### Update History

2017-06-22	An observation data was registered.
2016-04-07	An observation data was registered.
2014-08-20	An observation data was registered.
2014-07-23	An observation data was registered.
2014-02-06	An observation data was registered.
2012-12-25	An observation data was registered.

#### JAMSTEC

[Site Policy](#)  
[Privacy Policy](#)  
[Application for Data and Samples](#)  
[Data Policy](#)  
  
[What's New](#)  
[Update History](#)  
[Feeds](#)

#### Lists

[Publication List](#)  
[Amount of Public Info.](#)

#### Data

[Map Search](#)  
[Data Tree](#)  
[Detailed Search](#)

#### Information of the Ships

[NATSUSHIMA](#)  
[KAIYO](#)  
[YOKOSUKA](#)  
[MIRAI](#)  
[KAIREI](#)  
[CHIKYU](#)  
[KAIMEI](#)  
[SHINSEI MARU](#)  
[HAKUHO MARU](#)

#### Information of the Submersibles

[KAICO](#)  
[SHINKAI 2000](#)  
[SHINKAI 6500](#)  
[DEEP TOW](#)  
[HYPER-DOLPHIN](#)  
[URASHIMA](#)  
[YOKOSUKA DEEP TOW](#)  
[6K Camera DEEP TOW](#)  
[6K Sonar DEEP TOW](#)  
[KM-ROV](#)  
[POWER GRAB SAMPLER \(SHELL\)](#)  
[POWER GRAB SAMPLER \(CLOW\)](#)  
[BMS](#)

#### Go to a Cruise Information

Cruise ID:

#### Go to a Dive Information

Dive ID:

Copyright 2011 Japan Agency for Marine-Earth Science and Technology



**JAMSTEC**  
JAPAN AGENCY FOR MARINE-EARTH SCIENCE AND TECHNOLOGY

国立研究開発法人  
海洋研究開発機構

## MIRAI MR03-K03 Leg1 Conductivity-Temperature-Depth Profiler (CTD)

Last Modified: 2017-06-22

[ReadMe](#) [Observation Data](#) [Data Format](#)

Cruise ID: [MR03-K03 Leg1](#)

Conductivity-Temperature-Depth Profiler (CTD): Processed (DMO)-QCed

Data Policy: [JAMSTEC](#)

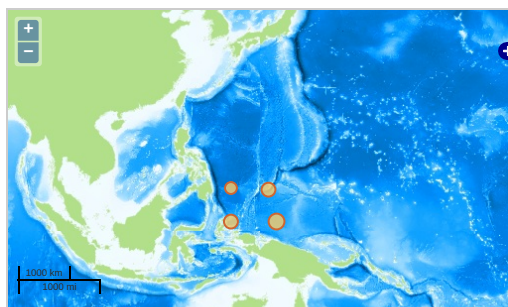
Observation Items: Pressure, Temperature, Salinity, Dissolved oxygen

Science Keywords:

OCEANS > OCEAN CHEMISTRY > OXYGEN  
OCEANS > OCEAN > WATER  
TEMPERATURE TEMPERATURE  
OCEANS > SALINITY/DENSITY > SALINITY

### Observation Map

1. Clicking the icon displays a balloon with observation information.
2. Then click the observation name, figures will be displayed.



— ... Observation Line — ... Navigation ● ... Observation, Dive Point, Hole

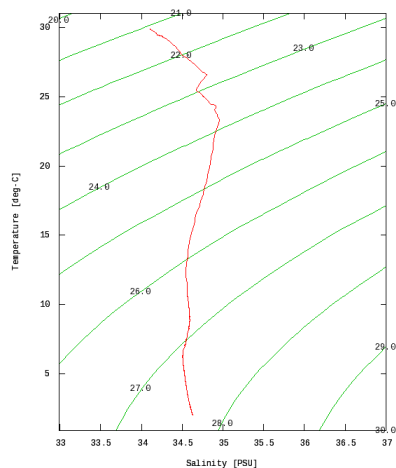
Imagery reproduced from ...

### Figures

C01s01



MR03-K03 Leg1: C01s01  
Conductivity-Temperature-Depth Profiler (CTD): Salinity



Only values evaluated as "good" (all flags are 0) are plotted in profiles.  
Please see Format Page for the definition of quality flags.

### Data List

[Add to Basket](#)

#### File names

<input type="checkbox"/>	C01s01.dat
<input type="checkbox"/>	C01s02.dat
<input type="checkbox"/>	C02s01.dat
<input type="checkbox"/>	C02s02.dat
<input type="checkbox"/>	C03s01.dat
<input type="checkbox"/>	C03s02.dat
<input type="checkbox"/>	C04s01.dat
<input type="checkbox"/>	C05s01.dat
<input type="checkbox"/>	C05s02.dat
<input type="checkbox"/>	C06s01.dat
<input type="checkbox"/>	C06s02.dat
<input type="checkbox"/>	C07s01.dat
<input type="checkbox"/>	C07s02.dat

## Files

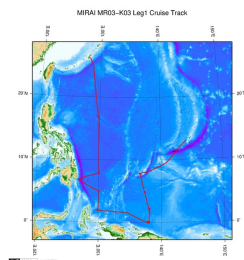
C08s02.dat  
C08s03.dat  
ex\_read2.f (Sample Program)

### ● Observation List

The list of observation is shown as follows.

Observation	Time and Date	Lat. [°]	Lon. [°]
C01s01	2003-06-09 03:58	7.6768	136.6805
C01s02	2003-06-09 06:09	7.6831	136.6780
C02s01	2003-06-11 03:51	4.8653	137.2918
C02s02	2003-06-11 05:39	4.8621	137.2903
C03s01	2003-06-13 03:46	2.0173	138.1080
C03s02	2003-06-13 05:41	2.0163	138.1081
C04s01	2003-06-14 22:46	2.0165	138.1165
C05s01	2003-06-16 03:56	0.0508	137.8710
C05s02	2003-06-16 06:33	0.0540	137.8668
C06s01	2003-06-20 03:47	2.0030	130.0083
C06s02	2003-06-20 05:35	2.0093	130.0081
C07s01	2003-06-22 01:36	5.1090	130.0501
C07s02	2003-06-22 03:54	5.0163	129.9723
C08s01	2003-06-24 04:02	7.9640	130.0165
C08s02	2003-06-24 06:26	7.9593	130.0113
C08s03	2003-06-25 03:36	7.9990	130.0105

## Related Information



[Enlarge Image](#)

### MR03-K03 Leg1

Ship Name: MIRAI  
Period: 2003-06-07 - 2003-06-29  
Chief Scientist: Hideaki Hase (JAMSTEC)  
Project Name: [Tropical Ocean Climate Study (TOCS)]

## Update History

2017-06-22 An observation data was registerd.  
2016-04-07 An observation data was registerd.  
2014-08-20 An observation data was registerd.  
2014-07-23 An observation data was registerd.  
2014-02-06 An observation data was registerd.  
2012-12-25 An observation data was registerd.

### JAMSTEC

Site Policy  
Privacy Policy  
Application for Data and Samples  
Data Policy  
What's New  
Update History  
Feeds

Lists  
Publication List  
Amount of Public Info.  
Data  
Map Search  
Data Tree  
Detailed Search

### Information of the Ships

NATSUSHIMA  
KAIYO  
YOKOSUKA  
MIRAI  
KAIREI  
CHIKYU  
KAIMEI  
SHINSEI MARU  
HAKUHO MARU

### Information of the Submersibles

KAIKO  
SHINKAI 2000  
SHINKAI 6500  
DEEP TOW  
HYPER-DOLPHIN  
URASHIMA  
YOKOSUKA DEEP TOW  
6K Camera DEEP TOW  
6K Sonar DEEP TOW  
KM-ROV  
POWER GRAB SAMPLER (SHELL)  
POWER GRAB SAMPLER (GLOW)  
BMS

### Go to a Cruise Information

Cruise ID:

### Go to a Dive Information

Dive ID:

Copyright 2011 Japan Agency for Marine-Earth Science and Technology

 **JAMSTEC** 国立研究開発法人  
海洋研究開発機構  
JAPAN AGENCY FOR MARINE-EARTH SCIENCE AND TECHNOLOGY