

MIRAI MR16-09 Leg1 Shipboard Acoustic Doppler Current Profiler (ADCP)

Last Modified: 2019-07-31

[ReadMe](#) [Observation Data](#) [Data Format](#)

Cruise ID: [MR16-09 Leg1](#)

Shipboard Acoustic Doppler Current Profiler (ADCP): Processed (PI)

Data Policy: [JAMSTEC](#)

Observation Items: Depth, Absolute velocity (zonal, meridional and vertical)

Science Keywords:

OCEANS > OCEAN CIRCULATION > OCEAN CURRENTS

Cruise Report

http://www.godac.jamstec.go.jp/catalog/data/doc_catalog/media/MR16-09_leg1-4_all.pdf

For Using Data

Principal Investigator

Shinya Koketsu (JAMSTEC)

Use Constraints

See [Terms and Conditions](#) about constrain of use.

Data Citation

See [Terms and Conditions](#) about data citation.

Instrument

Instrument:

Shipboard acoustic doppler current profiler (ADCP) (MR08-02 -)



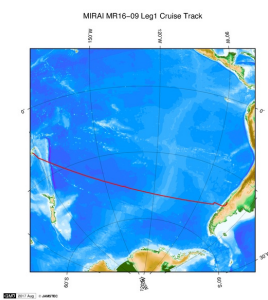
Data Citation

Refer [WHP P17E Revisit in 2017 Data Book](#) (doi: 10.17596/00000003) .

Overview

For details about data, please refer to the Data book [WHP P17E Revisit in 2017 Data Book](#) (doi: 10.17596/00000003) .

Related Information



 [Enlarge Image](#)

MR16-09 Leg1

Ship Name: MIRAI

Period: 2016-12-26 - 2017-01-17

Chief Scientist: Akihiko Murata (JAMSTEC)

Proposal ▶ Ship-borne measurements of aerosols in the marine atmosphere: Investigation of potential influence of marine aerosol particles on the climate;

Update History

| | |
|------------|------------------------------------|
| 2019-07-31 | An observation data was registerd. |
| 2017-08-31 | An observation data was registerd. |

JAMSTEC

[Site Policy](#)

[Privacy Policy](#)

[Application for Data and Samples](#)

[Data Policy](#)

[What's New](#)

[Update History](#)

[Feeds](#)

Lists

[Publication List](#)

[Amount of Public Info.](#)

Data

[Map Search](#)

[Data Tree](#)

[Detailed Search](#)

Information of the Ships

[NATSUSHIMA](#)

[KAIYO](#)

[YOKOSUKA](#)

[MIRAI](#)

[KAIREI](#)

[CHIKYU](#)

[KAIMEI](#)

[SHINSEI MARU](#)

[HAKUHO MARU](#)

Information of the Submersibles

[KAIKO](#)

[SHINKAI 2000](#)

[SHINKAI 6500](#)

[DEEP TOW](#)

[HYPER-DOLPHIN](#)

[URASHIMA](#)

[YOKOSUKA DEEP TOW](#)

[6K Camera DEEP TOW](#)

[6K Sonar DEEP TOW](#)

[KM-ROV](#)

[POWER GRAB SAMPLER \(SHELL\)](#)

[POWER GRAB SAMPLER \(CLOW\)](#)

[BMS](#)

Go to a Cruise Information

Cruise ID:

Go to a Dive Information

Dive ID:



MIRAI MR16-09 Leg1 Shipboard Acoustic Doppler Current Profiler (ADCP)

Last Modified: 2019-07-31

[ReadMe](#) [Observation Data](#) [Data Format](#)

Cruise ID: [MR16-09 Leg1](#)

Shipboard Acoustic Doppler Current Profiler (ADCP) Processed (PI)

Data Policy: [JAMSTEC](#)

Files: YYYY=Year, MM=Month, DD=Day, HH=Hour, mm=minute, SS=Second
YYYYMMDDHHmmSS.txt Velocity profile (5 min. average)

Longitude Latitude YYYYMMDDHHmmSS

Depth(m) U(m/s) V(m/s) U_Error(m/s) V_Error(m/s)

```

- - - - -
- - - - -
- - - - -
- - - - -
- - - - -

```

Parameter:

Depth Depth, m

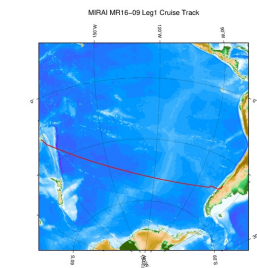
U, Eastward velocity, m/s

V, Northward velocity, m/s

U_Error, Error of U, m/s

V_Error, Error of V, m/s

Related Information



[Enlarge Image](#)

MR16-09 Leg1

Ship Name: MIRAI

Period: 2016-12-26 - 2017-01-17

Chief Scientist: Akihiko Murata (JAMSTEC)

Proposal ▶ Ship-borne measurements of aerosols in the marine atmosphere: Investigation of potential influence of marine aerosol particles on the climate;

Update History

| | |
|------------|-------------------------------------|
| 2019-07-31 | An observation data was registered. |
| 2017-08-31 | An observation data was registered. |

JAMSTEC

[Site Policy](#)

[Privacy Policy](#)

[Application for Data and Samples](#)

[Data Policy](#)

[What's New](#)

[Update History](#)

[Feeds](#)

Lists

[Publication List](#)

[Amount of Public Info.](#)

Data

[Map Search](#)

[Data Tree](#)

[Detailed Search](#)

Information of the Ships

[NATSUSHIMA](#)

[KAIYO](#)

[YOKOSUKA](#)

[MIRAI](#)

[KAIREI](#)

[CHIKYU](#)

[KAIMEI](#)

[SHINSEI MARU](#)

[HAKUHO MARU](#)

Information of the Submersibles

[KAIKO](#)

[SHINKAI 2000](#)

[SHINKAI 6500](#)

[DEEP TOW](#)

[HYPER-DOLPHIN](#)

[URASHIMA](#)

[YOKOSUKA DEEP TOW](#)

[6K Camera DEEP TOW](#)

[6K Sonar DEEP TOW](#)

[KM-ROV](#)

[POWER GRAB SAMPLER \(SHELL\)](#)

[POWER GRAB SAMPLER \(CLOW\)](#)

[BMS](#)

Go to a Cruise Information

Cruise ID:

Go to a Dive Information

Dive ID:

MIRAI MR16-09 Leg1 Shipboard Acoustic Doppler Current Profiler (ADCP)

Last Modified: 2019-07-31

[ReadMe](#) [Observation Data](#) [Data Format](#)

Cruise ID: [MR16-09 Leg1](#)

Shipboard Acoustic Doppler Current Profiler (ADCP): Processed (PI)

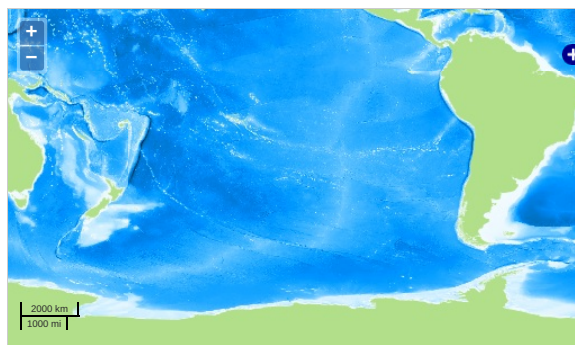
Data Policy: [JAMSTEC](#)

Observation Items: Depth, Absolute velocity (zonal, meridional and vertical)

Science Keywords:

OCEANS > OCEAN CIRCULATION > OCEAN CURRENTS

Observation Map



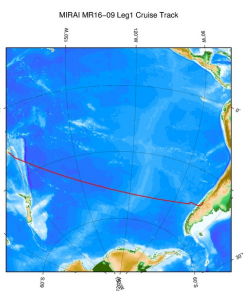
... Observation Line ... Navigation ... Observation, Dive Point, Hole

Data List

File names

☐ MR16-09_leg1_adcp.zip

Related Information



[Enlarge Image](#)

MR16-09 Leg1

Ship Name: MIRAI

Period: 2016-12-26 - 2017-01-17

Chief Scientist: Akihiko Murata (JAMSTEC)

Proposal ▶ Ship-borne measurements of aerosols in the marine atmosphere: Investigation of potential influence of marine aerosol particles on the climate;

Update History

| | |
|------------|-------------------------------------|
| 2019-07-31 | An observation data was registered. |
| 2017-08-31 | An observation data was registered. |

JAMSTEC

[Site Policy](#)
[Privacy Policy](#)
[Application for Data and Samples](#)
[Data Policy](#)

[What's New](#)
[Update History](#)
[Feeds](#)

Lists

[Publication List](#)
[Amount of Public Info.](#)

[Data](#)
[Map Search](#)
[Data Tree](#)
[Detailed Search](#)

Information of the Ships

[NATSUSHIMA](#)
[KAIYO](#)
[YOKOSUKA](#)
[MIRAI](#)
[KAIREI](#)
[CHIKYU](#)
[KAIMEI](#)
[SHINSEI MARU](#)
[HAKUHO MARU](#)

Information of the Submersibles

[KAIKO](#)
[SHINKAI 2000](#)
[SHINKAI 6500](#)
[DEEP TOW](#)
[HYPER-DOLPHIN](#)
[URASHIMA](#)
[YOKOSUKA DEEP TOW](#)
[6K Camera DEEP TOW](#)
[6K Sonar DEEP TOW](#)
[KM-ROV](#)
[POWER GRAB SAMPLER \(SHELL\)](#)
[POWER GRAB SAMPLER \(CLOW\)](#)
[BMS](#)

Go to a Cruise Information

Cruise ID:

Go to a Dive Information

Dive ID: