

## MIRAI MR07-07 Leg2 Bottle Sampling Water Chemical Analysis

Last Modified: 2017-07-28

[ReadMe](#) [Observation Data](#) [Data Format](#) [Quality Information](#)

Cruise ID: [MR07-07 Leg2](#)

Bottle Sampling Water Chemical Analysis: Processed (PI)

Data Policy: [JAMSTEC](#)

Observation Items: Temperature, Salinity, Potential temperature, Density

Science Keywords:

OCEANS > OCEAN CHEMISTRY > SALINITY  
OCEANS > OCEAN TEMPERATURE > WATER TEMPERATURE  
OCEANS > SALINITY/DENSITY > SALINITY  
OCEANS > OCEAN TEMPERATURE > POTENTIAL TEMPERATURE

Cruise Report

[http://www.godac.jamstec.go.jp/catalog/data/doc\\_catalog/media/MR07-07\\_leg2-3\\_all.pdf](http://www.godac.jamstec.go.jp/catalog/data/doc_catalog/media/MR07-07_leg2-3_all.pdf)

### [For Using Data](#)

#### Principal Investigator

CTDTMP : Hideaki Hase (JAMSTEC)  
CTDSAL : Hideaki Hase (JAMSTEC)  
SALNTY : Hideaki Hase (JAMSTEC)

JAMSTEC / BPPT joint cruise in the Indonesian waters.

#### Use Constraints

See [Terms and Conditions](#) about constrain of use.

#### Data Citation

See [Terms and Conditions](#) about data citation.

### Instrument

Instrument:

Salinity measurement system



### Information on CTD data

#### (1) Temperature sensor

Model : SBE3, Sea-Bird Electronics, Inc.  
Measurement range : -5.0 to +35degC  
Accuracy : 0.001degC  
Resolution : 0.0002degC

#### (2) Salinity sensor

Model : SBE4, Sea-Bird Electronics, Inc.  
Measurement range : 0.0 to 7S/m  
Accuracy : 0.0003S/m  
Resolution : 0.00004S/m

#### (3) Pressure sensor

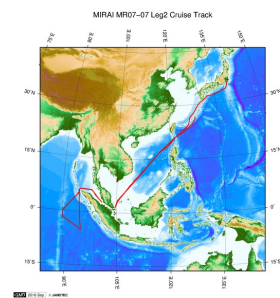
Model : SBE9plus, Sea-Bird Electronics, Inc.  
Measurement range : up to 10500m  
Accuracy : 0.015%F.S.  
Resolution : 0.001%F.S.

### Information on Chemical and Biological data

#### 1. Salinity

- (1) Instruments : Autosol salinometer model 8400B(Guildline Instruments Ltd.)
- (2) Methods : -
- (3) Precision : 0.0001 PSU
- (4) Reference Material/Calibration : IAPSO Standard Sea Water batch P148(Ocean Scientific International Ltd.)

### Related Information



 [Enlarge Image](#)

#### MR07-07 Leg2

Ship Name: MIRAI

Period: 2008-01-26 - 2008-02-25

Chief Scientist: Hideaki Hase (JAMSTEC)

Project Name: [Tropical Ocean Climate Study (TOCS)]

#### Update History

2017-07-28	An observation data was registerd.
2016-10-11	An observation data was registerd.

#### JAMSTEC

[Site Policy](#)

[Privacy Policy](#)

[Application for Data and Samples](#)

[Data Policy](#)

#### What's New

[Update History](#)

[Feeds](#)

#### Lists

[Publication List](#)

[Amount of Public Info.](#)

#### Data

[Map Search](#)

[Data Tree](#)

[Detailed Search](#)

#### Information of the Ships

[NATSUSHIMA](#)

[KAIYO](#)

[YOKOSUKA](#)

[MIRAI](#)

[KAIREI](#)

[CHIKYU](#)

[KAIMEI](#)

[SHINSEI MARU](#)

[HAKUHO MARU](#)

#### Information of the Submersibles

[KAIKO](#)

[SHINKAI 2000](#)

[SHINKAI 6500](#)

[DEEP TOW](#)

[HYPER-DOLPHIN](#)

[URASHIMA](#)

[YOKOSUKA DEEP TOW](#)

[6K Camera DEEP TOW](#)

[6K Sonar DEEP TOW](#)

[KM-ROV](#)

[POWER GRAB SAMPLER](#)

[\(SHELL\)](#)

[POWER GRAB SAMPLER](#)

[\(CLOW\)](#)

[BMS](#)

#### Go to a Cruise Information

Cruise ID:

[Go](#)

#### Go to a Dive Information

Dive ID:

[Go](#)

Copyright 2011 Japan Agency for Marine-Earth Science and Technology



**JAMSTEC**

国立研究開発法人  
海洋研究開発機構  
JAPAN AGENCY FOR MARINE-EARTH SCIENCE AND TECHNOLOGY

## MIRAI MR07-07 Leg2 Bottle Sampling Water Chemical Analysis

Last Modified: 2017-07-28

[ReadMe](#) [Observation Data](#) [Data Format](#) [Quality Information](#)

Cruise ID: [MR07-07 Leg2](#)

Bottle Sampling Water Chemical Analysis: Processed (PI)

Data Policy: [JAMSTEC](#)

### Exchange Format

Provided in the Exchange Format of CCHDO (CLIVAR and Carbon Hydrographic Data Office).

Please see the following link for details of Exchange Format.

[CCHDO | CLIVAR & Carbon Hydrographic Data Office](#)

Format Information

Column No.	Column Heading Mnemonic	Units Mnemonic	Reporting Precision FORTRAN Format	Comments
1	EXPCODE		A14	Expedition code
2	SECT		A6	For WOCE data the WHP section identifier
3	STNNBR		A6	Station number
4	CASTNO		I3	Cast number
5	SAMPNO		A7	Sample number
6	BTLNBR		A7	Bottle identification number
7	BTLNBR_FLAG_W		I1	Bottle quality flag
8	DATE		I8	Cast date(UTC)
9	TIME	UTC	I4	Cast time (UTC)
10	LATITUDE	DEG	F8.4	LATITUDE
11	LONGITUDE	DEG	F9.4	LONGITUDE
12	DEPTH	M	I5	Reported depth to bottom.
13	CTDDPT	M	F9.1	Depth
14	CTDDPT_FLAG_W		I1	Quality flag for CTD data
15	CTDPRS	DBAR	F9.1	Pressure
16	CTDPRS_FLAG_W		I1	Quality flag for CTD data
17	CTDTMP	ITS-90	F9.4	Temperature
18	CTDTMP_FLAG_W		I1	Quality flag for CTD data
19	CTDSAL	PSS-78	F9.4	CTD Salinity sensor
20	CTDSAL_FLAG_W		I1	Quality flag for CTD data
21	SALNTY	PSS-78	F9.4	Salinity
22	SALNTY_FLAG_W		I1	Quality flags for water samples
23	THETA	DEG C	F9.4	Potential temperature
24	SIG0	KG/CUM	F9.4	Density

### ODV Format

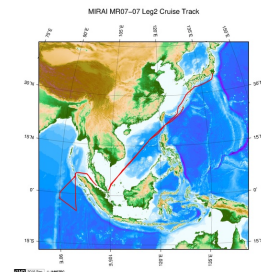
Please see the following link for details of ODV Format and ODV Software.

[Ocean Data View \(ODV\)](#)

Format Information

Column No.	Column Heading	Comments
1	Cruise	Cruise Label
2	Station	Station number_Cast number
3	Type	Station type
4	mon/day/yr	Cast date(UTC)
5	hh:mm	Cast time (UTC)
6	Latitude [degrees_north]	LATITUDE
7	Longitude [degrees_east]	LONGITUDE
8	Bot. Depth [m]	Reported depth to bottom.
9	CTDDPT[M]	Depth
10	QF	Quality flag for CTD data
11	CTDPRS[DBAR]	Pressure
12	QF	Quality flag for CTD data
13	CTDTMP[ITS-90]	Temperature
14	QF	Quality flag for CTD data
15	CTDSAL[PSS-78]	CTD Salinity sensor
16	QF	Quality flag for CTD data
17	SALNTY[PSS-78]	Salinity
18	QF	Quality flags for water samples
19	THETA[DEG C]	Potential temperature
20	QF	Quality flag for CTD data
21	SIG0[KG/CUM]	Density
22	QF	Quality flag for CTD data
23	SAMPNO	Sample number
24	QF	Bottle quality flag

### Related Information



[Enlarge Image](#)

#### MR07-07 Leg2

Ship Name: MIRAI  
Period: 2008-01-26 - 2008-02-25  
Chief Scientist: Hideaki Hase (JAMSTEC)  
Project Name: [Tropical Ocean Climate Study (TOCS)]

#### Update History

2017-07-28	An observation data was registerd.
2016-10-11	An observation data was registerd.

JAMSTEC  
Site Policy  
Privacy Policy  
Application for Data and Samples  
Data Policy  
What's New  
Update History  
Feeds

Lists  
Publication List  
Amount of Public Info.  
Data  
Map Search  
Data Tree  
Detailed Search

Information of the Ships  
NATSUSHIMA  
KAIYO  
YOKOSUKA  
MIRAI  
KAIREI  
CHIKYU  
KAIMEI  
SHINSEI MARU  
HAKUHO MARU

Information of the Submersibles  
KAIKO  
SHINKAI 2000  
SHINKAI 6500  
DEEP TOW  
HYPER-DOLPHIN  
URASHIMA  
YOKOSUKA DEEP TOW  
6K Camera DEEP TOW  
6K Sonar DEEP TOW  
KM-ROV  
POWER GRAB  
SAMPLER (SHELL)  
POWER GRAB  
SAMPLER (CLOW)  
BMS

#### Go to a Cruise Information

Cruise ID:

#### Go to a Dive Information

Dive ID:

Copyright 2011 Japan Agency for Marine-Earth Science and Technology

 **JAMSTEC** 国立研究開発法人 海洋研究開発機構  
JAPAN AGENCY FOR MARINE-EARTH SCIENCE AND TECHNOLOGY

## MIRAI MR07-07 Leg2 Bottle Sampling Water Chemical Analysis

Last Modified: 2017-07-28

[ReadMe](#) [Observation Data](#) [Data Format](#) [Quality Information](#)

Cruise ID: [MR07-07 Leg2](#)

Bottle Sampling Water Chemical Analysis: Processed (PI)

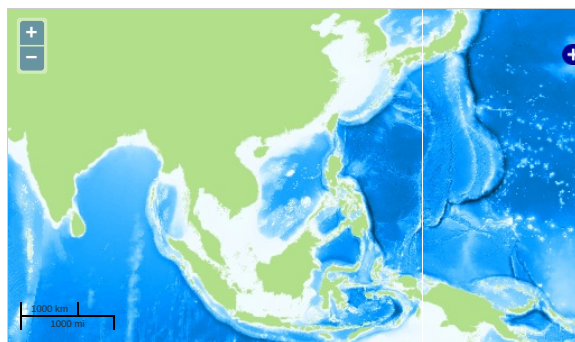
Data Policy: [JAMSTEC](#)

Observation Items: Temperature, Salinity, Potential temperature, Density

Science Keywords:

OCEANS > OCEAN CHEMISTRY > SALINITY  
OCEANS > OCEAN TEMPERATURE > WATER TEMPERATURE  
OCEANS > SALINITY/DENSITY > SALINITY  
OCEANS > OCEAN TEMPERATURE > POTENTIAL TEMPERATURE

### Observation Map

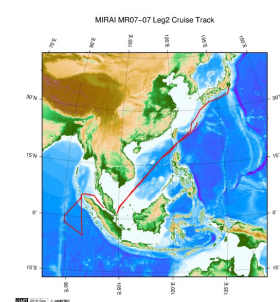


— ... Observation Line — ... Navigation ● ... Observation, Dive Point, Hole

### Data List

☐ File names  
☐ MR070702\_ex\_bot.csv  
☐ MR070702\_odv\_bot.txt

### Related Information



[Enlarge Image](#)

#### MR07-07 Leg2

Ship Name: MIRAI  
Period: 2008-01-26 - 2008-02-25  
Chief Scientist: Hideaki Hase (JAMSTEC)  
Project Name: [Tropical Ocean Climate Study (TOCS)]

### Update History

2017-07-28	An observation data was registered.
2016-10-11	An observation data was registered.

JAMSTEC  
Site Policy  
Privacy Policy  
Application for Data and Samples  
Data Policy  
What's New  
Update History  
Feeds

Lists  
Publication List  
Amount of Public Info.  
Data  
Map Search  
Data Tree  
Detailed Search

Information of the Ships  
NATSUSHIMA  
KAIO  
YOKOSUKA  
MIRAI  
KAIREI  
CHIKYU  
KAIMEI  
SHINSEI MARU  
HAKUHO MARU

Information of the Submersibles  
KAIO  
SHINKAI 2000  
SHINKAI 6500  
DEEP TOW  
HYPER-DOLPHIN  
URASHIMA  
YOKOSUKA DEEP TOW  
6K Camera DEEP TOW  
6K Sonar DEEP TOW  
KM-ROV  
POWER GRAB SAMPLER (SHELL)  
POWER GRAB SAMPLER (CLOW)  
BMS

Go to a Cruise Information

Cruise ID:

Go to a Dive Information

Dive ID: