

YOKOSUKA YK14-21 Heat flow measurement data

Last Modified: 2017-01-31

[ReadMe](#) [Observation Data](#)

Cruise ID: [YK14-21](#)

Heat flow measurement data: Processed (PI)

Data Policy: [JAMSTEC](#)

Observation Items:

Science Keywords:

Data Information

Time-series of temperature of sensors attached along a probe.

Measurement interval is 30 sec.

Sensor intervals are listed at the top of the data file.

Coordinates of the stations and probe penetration time are compiled in a table (YK14-21_HFstations.xls).

Cruise Report

http://www.godac.jamstec.go.jp/catalog/data/doc_catalog/media/YK14-21_all.pdf

For Using Data

Principal Investigator

Makoto Yamano (Earthquake Research Institute, University of Tokyo)

Use Constraints

See [Terms and Conditions](#) about constrain of use.

Data Citation

See [Terms and Conditions](#) about data citation.

Instrument

Instrument:

Deep-sea heat flow probe, Heat flow

piston coring system

Instrument Information:

scription of the instruments is given in the cruise report.

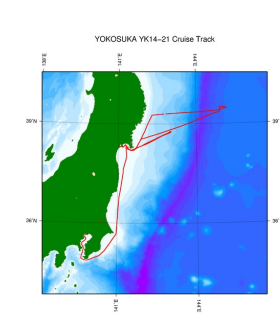


Data Format

Microsoft Excel file (.xls)

Temperature in deg C

Related Information



[Enlarge Image](#)

YK14-21

Ship Name: YOKOSUKA

Period: 2014-12-15 - 2014-12-24

Chief Scientist: Makoto Yamano (The University of Tokyo)

Proposal Studies of fracturing and pore fluid circulation in the oceanic crust subducting along the Japan

Title: Trench through heat flow and electromagnetic surveys

Update History

2017-01-31 An observation data was registered.

JAMSTEC
Site Policy
Privacy Policy
Application for Data and Samples
Data Policy
What's New
Update History
Feeds

Lists
Publication List
Amount of Public Info.
Data
Map Search
Data Tree
Detailed Search

Information of the Ships
NATSUSHIMA
KAIYO
YOKOSUKA
MIRAI
KAIREI
CHIKYU
KAIMEI
SHINSEI MARU
HAKUHO MARU

Information of the Submersibles
KAIKO
SHINKAI 2000
SHINKAI 6500
DEEP TOW
HYPER-DOLPHIN
URASHIMA
YOKOSUKA DEEP TOW
6K Camera DEEP TOW
6K Sonar DEEP TOW
KM-ROV
POWER GRAB SAMPLER (SHELL)

Go to a Cruise Information

Cruise ID:

Go to a Dive Information

Dive ID:

POWER GRAB SAMPLER
(CLOW)
BMS

Copyright 2011 Japan Agency for Marine-Earth Science and
Technology



JAMSTEC 国立研究開発法人
海洋研究開発機構
JAPAN AGENCY FOR MARINE-EARTH SCIENCE AND TECHNOLOGY

YOKOSUKA YK14-21 Heat flow measurement data

Last Modified: 2017-01-31

[ReadMe](#) [Observation Data](#)

Cruise ID: [YK14-21](#)

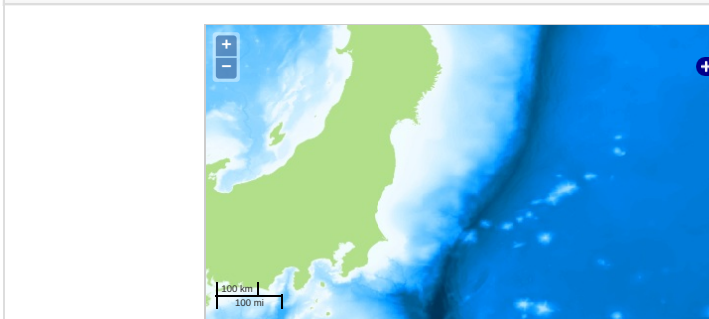
Heat flow measurement data Processed (PI)

Data Policy: [JAMSTEC](#)

Observation Items:

Science Keywords:

Observation Map



Imagery reproduced from ...

... Observation Line ... Navigation ... Observation, Dive Point, Hole

Data List

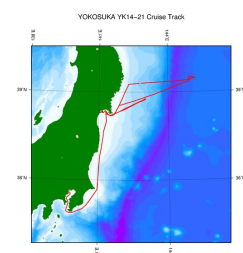
[Add to Basket](#)

☐ File names

☐ YK14-21_HF.xls

☐ Yk14-21_HFstations.xls

Related Information



© 2017 JAMSTEC

[Enlarge Image](#)

YK14-21

Ship Name: YOKOSUKA

Period: 2014-12-15 - 2014-12-24

Chief Scientist: Makoto Yamano (The University of Tokyo)

Proposal: Studies of fracturing and pore fluid circulation in the oceanic crust subducting along the Japan Trench through heat flow and electromagnetic surveys

Update History

2017-01-31 An observation data was registered.

JAMSTEC

[Site Policy](#)
[Privacy Policy](#)
[Application for Data and Samples](#)
[Data Policy](#)

What's New

[Update History](#)
[Feeds](#)

Lists

[Publication List](#)
[Amount of Public Info.](#)
[Data](#)
[Map Search](#)
[Data Tree](#)
[Detailed Search](#)

Information of the Ships

[NATSUSHIMA](#)
[KAIYO](#)
[YOKOSUKA](#)
[MIRAI](#)
[KAIREI](#)
[CHIKYU](#)
[KAIMEI](#)
[SHINSEI MARU](#)
[HAKUHO MARU](#)

Information of the Submersibles

[KAIKO](#)
[SHINKAI 2000](#)
[SHINKAI 6500](#)
[DEEP TOW](#)
[HYPER-DOLPHIN](#)
[URASHIMA](#)
[YOKOSUKA DEEP TOW](#)
[6K Camera DEEP TOW](#)
[6K Sonar DEEP TOW](#)
[KM-ROV](#)
[POWER GRAB SAMPLER \(SHELL\)](#)
[POWER GRAB SAMPLER \(CLOW\)](#)
[BMS](#)

Go to a Cruise Information

Cruise ID:

Go to a Dive Information

Dive ID: