

MIRAI MR05-03 Leg1 Bottle Sampling Water Chemical Analysis

Last Modified: 2017-07-28

[ReadMe](#) [Observation Data](#) [Data Format](#) [Quality Information](#)

Cruise ID: [MR05-03 Leg1](#)

Bottle Sampling Water Chemical Analysis: Processed (DMO/PI)

Data Policy: [JAMSTEC](#)

Observation Items: Temperature, Salinity, Chlorophyll, Potential temperature, Density

Science Keywords:

OCEANS > OCEAN CHEMISTRY > SALINITY
OCEANS > OCEAN CHEMISTRY > CHLOROPHYLL
OCEANS > OCEAN TEMPERATURE > WATER TEMPERATURE
OCEANS > SALINITY/DENSITY > SALINITY
OCEANS > OCEAN TEMPERATURE > POTENTIAL TEMPERATURE

Cruise Report

http://www.godac.jamstec.go.jp/catalog/data/doc_catalog/media/MR05-03_leg1-3_all.pdf

For Using Data

Principal Investigator

CTDTMP : Kentaro Ando (JAMSTEC)
CTDSAL : Kentaro Ando (JAMSTEC)
SALNTY : Kentaro Ando (JAMSTEC)
CHLORA : Naoki Nakatani (Osaka Prefecture University)

JAMSTEC / BPPT joint cruise in the Indonesian waters.

Use Constraints

See [Terms and Conditions](#) about constrain of use.

Data Citation

See [Terms and Conditions](#) about data citation.

Instrument

Instrument:

Salinity measurement system



Instrument:

Fluorometer (TURNER DESIGNS)



Information on CTD data

(1) Temperature sensor

Model : SBE3, Sea-Bird Electronics, Inc.
Measurement range : -5.0 to +35degC
Accuracy : 0.001degC
Resolution : 0.0002degC

(2) Salinity sensor

Model : SBE4, Sea-Bird Electronics, Inc.
Measurement range : 0.0 to 7S/m
Accuracy : 0.0003S/m
Resolution : 0.00004S/m

(3) Pressure sensor

Model : SBE9plus, Sea-Bird Electronics, Inc.
Measurement range : up to 10500m
Accuracy : 0.015%F.S.
Resolution : 0.001%F.S.

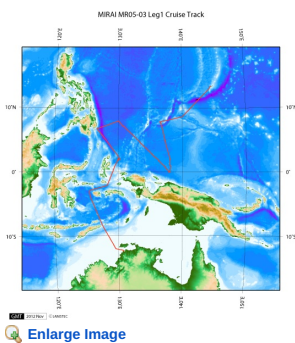
Information on Chemical and Biological data

1. Salinity

- (1) Instruments: Autosol salinometer model 8400B (Guildline Instruments Ltd.)
- (2) Methods : -
- (3) Precision : 0.0005 PSU
- (4) Reference Material/Calibration: IAPSO Standard Sea Water batch P145 (Ocean Scientific International Ltd.)

2. Chlorophyll-a

- (1) Instruments: Fluorophotometer model 10-AU-005 (Turner design)
- (2) Methods : extract in N,N-dimethylformamide/fluorometric determination (Holm-Hansen acidification method)
- (3) Precision : 0.015mg/m⁻³
- (4) Reference Material/Calibration: -



MR05-03 Leg1

Ship Name: MIRAI

Period: 2005-07-03 - 2005-07-25

Chief Scientist: Kentaro Ando (JAMSTEC)

Project Name: [Tropical Ocean Climate Study (TOCS)]

Update History

2017-07-28	An observation data was registerd.
2016-04-07	An observation data was registerd.
2015-05-29	An observation data was registerd.
2013-08-24	An observation data was registerd.
2012-11-25	An observation data was registerd.

JAMSTEC

[Site Policy](#)

[Privacy Policy](#)

[Application for Data and Samples](#)

[Data Policy](#)

[What's New](#)

[Update History](#)

[Feeds](#)

Lists

[Publication List](#)

[Amount of Public Info.](#)

Data

[Map Search](#)

[Data Tree](#)

[Detailed Search](#)

Information of the Ships

[NATSUSHIMA](#)

[KAIYO](#)

[YOKOSUKA](#)

[MIRAI](#)

[KAIREI](#)

[CHIKYU](#)

[KAIMEI](#)

[SHINSEI MARU](#)

[HAKUHO MARU](#)

Information of the Submersibles

[KAIKO](#)

[SHINKAI 2000](#)

[SHINKAI 6500](#)

[DEEP TOW](#)

[HYPER-DOLPHIN](#)

[URASHIMA](#)

[YOKOSUKA DEEP TOW](#)

[6K Camera DEEP TOW](#)

[6K Sonar DEEP TOW](#)

[KM-ROV](#)

[POWER GRAB SAMPLER \(SHELL\)](#)

[POWER GRAB SAMPLER \(CLOW\)](#)

[BMS](#)

Go to a Cruise Information

Cruise ID:

Go to a Dive Information

Dive ID:

Copyright 2011 Japan Agency for Marine-Earth Science and Technology



JAMSTEC

国立研究開発法人
海洋研究開発機構
JAPAN AGENCY FOR MARINE-EARTH SCIENCE AND TECHNOLOGY

MIRAI MR05-03 Leg1 Bottle Sampling Water Chemical Analysis

Last Modified: 2017-07-28

[ReadMe](#)
[Observation Data](#)
[Data Format](#)
[Quality Information](#)

Cruise ID: [MR05-03 Leg1](#)

Bottle Sampling Water Chemical Analysis: Processed (DMO/PI)

Data Policy: [JAMSTEC](#)

Exchange Format

Provided in the Exchange Format of CCHDO (CLIVAR and Carbon Hydrographic Data Office).

Please see the following link for details of Exchange Format.

[CCHDO | CLIVAR & Carbon Hydrographic Data Office](#)

Format Information

Column No.	Column Heading Mnemonic	Units Mnemonic	Reporting Precision FORTRAN Format	Comments
1	EXPCODE		A14	Expedition code
2	SECT		A6	For WOCE data the WHP section identifier
3	STNNBR		A6	Station number
4	CASTNO		I3	Cast number
5	SAMPNO		A7	Sample number
6	BTLNBR		A7	Bottle identification number
7	BTLNBR_FLAG_W		I1	Bottle quality flag
8	DATE		I8	Cast date(UTC)
9	TIME	UTC	I4	Cast time (UTC)
10	LATITUDE	DEG	F8.3	LATITUDE
11	LONGITUDE	DEG	F9.3	LONGITUDE
12	DEPTH	M	I5	Reported depth to bottom.
13	CTDDPT	M	F9.1	Depth
14	CTDDPT_FLAG_W		I1	Quality flag for CTD data
15	CTDPRS	DBAR	F9.1	Pressure
16	CTDPRS_FLAG_W		I1	Quality flag for CTD data
17	CTDTMP	ITS-90	F9.4	Temperature
18	CTDTMP_FLAG_W		I1	Quality flag for CTD data
19	CTDSAL	PSS-78	F9.4	CTD Salinity sensor
20	CTDSAL_FLAG_W		I1	Quality flag for CTD data
21	SALNTY	PSS-78	F9.4	Salinity
22	SALNTY_FLAG_W		I1	Quality flags for water samples
23	CHLORA	MG/CUM	F9.2	Chlorophyll a
24	CHLORA_FLAG_W		I1	Quality flags for water samples
25	THETA	DEG C	F9.4	Potential temperature
26	SIG0	KG/CUM	F9.4	Density

ODV Format

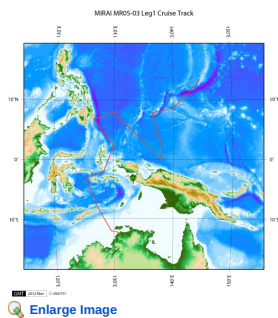
Please see the following link for details of ODV Format and ODV Software.

[Ocean Data View \(ODV\)](#)

Format Information

Column No.	Column Heading	Comments
1	Cruise	Cruise Label
2	Station	Station number_Cast number
3	Type	Station type
4	mon/day/yr	Cast date(UTC)
5	hh:mm	Cast time (UTC)
6	Latitude [degrees_north]	LATITUDE
7	Longitude [degrees_east]	LONGITUDE
8	Bot. Depth [m]	Reported depth to bottom.
9	CTDDPT[M]	Depth
10	QF	Quality flag for CTD data
11	CTDPRS[DBAR]	Pressure
12	QF	Quality flag for CTD data
13	CTDTMP[ITS-90]	Temperature
14	QF	Quality flag for CTD data
15	CTDSAL[PSS-78]	CTD Salinity sensor
16	QF	Quality flag for CTD data
17	SALNTY[PSS-78]	Salinity
18	QF	Quality flags for water samples
19	CHLORA[MG/CUM]	Chlorophyll a
20	QF	Quality flags for water samples
21	THETA[DEG C]	Potential temperature
22	QF	Quality flag for CTD data
23	SIG0[KG/CUM]	Density
24	QF	Quality flag for CTD data
25	SAMPNO	Sample number
26	QF	Bottle quality flag

Related Information



MR05-03 Leg1
 Ship Name: MIRAI
 Period: 2005-07-03 - 2005-07-25
 Chief Scientist: Kentaro Ando (JAMSTEC)
 Project Name: [Tropical Ocean Climate Study (TOCS)]

[Enlarge Image](#)

Update History

2017-07-28	An observation data was registerd.
2016-04-07	An observation data was registerd.
2015-05-29	An observation data was registerd.
2013-08-24	An observation data was registerd.
2012-11-25	An observation data was registerd.

JAMSTEC

[Site Policy](#)
[Privacy Policy](#)
[Application for Data and Samples](#)
[Data Policy](#)
[What's New](#)
[Update History](#)
[Feeds](#)

Lists

[Publication List](#)
[Amount of Public Info.](#)
Data
[Map Search](#)
[Data Tree](#)
[Detailed Search](#)

Information of the Ships

[NATSUSHIMA](#)
[KAIYO](#)
[YOKOSUKA](#)
[MIRAI](#)
[KAIREI](#)
[CHIKYU](#)
[KAIMEI](#)
[SHINSEI MARU](#)
[HAKUHO MARU](#)

Information of the Submersibles

[KAIKO](#)
[SHINKAI 2000](#)
[SHINKAI 6500](#)
[DEEP TOW](#)
[HYPER-DOLPHIN](#)
[URASHIMA](#)
[YOKOSUKA DEEP TOW](#)
[6K Camera DEEP TOW](#)
[6K Sonar DEEP TOW](#)
[KM-ROV](#)
[POWER GRAB SAMPLER \(SHELL\)](#)
[POWER GRAB SAMPLER \(CLOW\)](#)
[BMS](#)

Go to a Cruise Information

Cruise ID:

Go to a Dive Information

Dive ID:

Copyright 2011 Japan Agency for Marine-Earth Science and Technology



JAMSTEC

国立研究開発法人
海洋研究開発機構
JAPAN AGENCY FOR MARINE-EARTH SCIENCE AND TECHNOLOGY

MIRAI MR05-03 Leg1 Bottle Sampling Water Chemical Analysis

Last Modified: 2017-07-28

[ReadMe](#) [Observation Data](#) [Data Format](#) [Quality Information](#)

Cruise ID: [MR05-03 Leg1](#)

Bottle Sampling Water Chemical Analysis: Processed (DMO/PI)

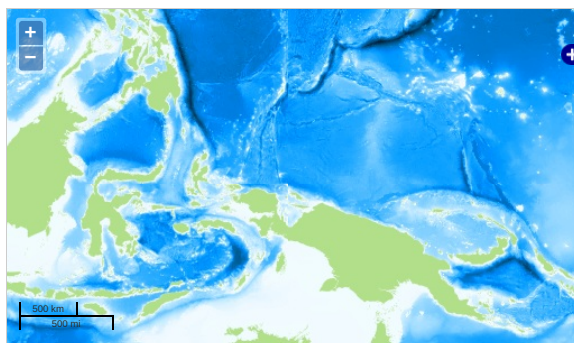
Data Policy: [JAMSTEC](#)

Observation Items: Temperature, Salinity, Chlorophyll, Potential temperature, Density

Science Keywords:

OCEANS > OCEAN CHEMISTRY > SALINITY
OCEANS > OCEAN CHEMISTRY > CHLOROPHYLL
OCEANS > OCEAN TEMPERATURE > WATER TEMPERATURE
OCEANS > SALINITY/DENSITY > SALINITY
OCEANS > OCEAN TEMPERATURE > POTENTIAL TEMPERATURE

Observation Map



... Observation Line ... Navigation ... Observation, Dive Point, Hole

Imagery reproduced from ...

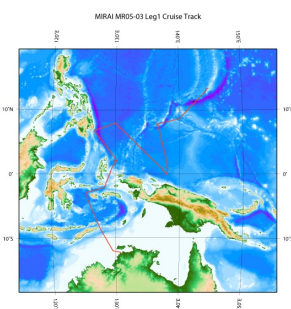
Data List

☐ File names

☐ MR050301_ex_bot.csv

☐ MR050301_odv_bot.txt

Related Information



[Enlarge Image](#)

MR05-03 Leg1

Ship Name: MIRAI

Period: 2005-07-03 - 2005-07-25

Chief Scientist: Kentaro Ando (JAMSTEC)

Project Name: [Tropical Ocean Climate Study (TOCS)]

Update History

2017-07-28	An observation data was registered.
2016-04-07	An observation data was registered.
2015-05-29	An observation data was registered.
2013-08-24	An observation data was registered.
2012-11-25	An observation data was registered.

JAMSTEC
[Site Policy](#)
[Privacy Policy](#)
[Application for Data and Samples](#)
[Data Policy](#)
[What's New](#)
[Update History](#)
[Feeds](#)

[Lists](#)
[Publication List](#)
[Amount of Public Info.](#)
[Data](#)
[Map Search](#)
[Data Tree](#)
[Detailed Search](#)

[Information of the Ships](#)
NATSUSHIMA
KAIYO
YOKOSUKA
MIRAI
KAIREI
CHIKYU
KAIMEI
SHINSEI MARU
HAKUHO MARU

[Information of the Submersibles](#)
KAIKO
SHINKAI 2000
SHINKAI 6500
DEEP TOW
HYPER-DOLPHIN
URASHIMA
YOKOSUKA DEEP TOW
6K Camera DEEP TOW
6K Sonar DEEP TOW
KM-ROV
POWER GRAB SAMPLER (SHELL)
POWER GRAB SAMPLER (CLOW)
BMS

[Go to a Cruise Information](#)

Cruise ID:

[Go to a Dive Information](#)

Dive ID:

