

SHINSEI MARU KS-19-20 Gravity

Last Modified: 2020-05-31

ReadMe

Cruise ID: [KS-19-20](#)

Gravity: Raw

Data Policy: [JURCAOS-JAMSTEC](#)

Observation Items: Absolute gravity

Science Keywords:

OCEANS > MARINE GEOPHYSICS > MARINE GRAVITY FIELD
SOLID EARTH > GEODETICS/GRAVITY > GRAVITY

For Using Data

Principal Investigator

Data Management Office

Use Constraints

See [Terms and Conditions](#) about constrain of use.

Data Citation

See [Terms and Conditions](#) about data citation.

Instrument

Instrument:

Shipboard gravimeter



Instrument:

Microgravimeter



Measurement System

(1) Shipboard gravity meter

The system consists of two main assemblies; the gyro-stabilized platform including the gravity sensor and the data handling & control system.

Manufacturer : Micro-g LaCoste
Model : S-177
Measuring range : 20,000 mGal
Accuracy : 1.0 mGal
Drift rate : < 3.0mGal/month
Installation : Gravity meter room

Reference: "Air-Sea Systemll Marine Gravity Meter User Manual", Micro-g LaCoste

(2) Portable gravity meter

The portable gravity meter consists of two modules; the data acquisition/control module and the gravity sensor module. The gravity sensor is enclosed in a thermostatically controlled vacuum chamber. The portable gravity meter is used to calculate the absolute gravity of the port with reference to the gravity station of the Japan Gravity Standardization Net of the Geographical Survey Institute of Japan.

Manufacturer : SCINTREX
Model : CG-5
Measurement range : 8,000 mGal
Standard deviation : 0.005 mGal
Drift rate : < 0.02 mGal/day

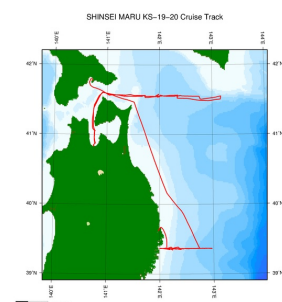
Reference:"CG-5 OPERATION MANUAL", SCINTREX

About this data

We have no plan to process the data because we could not obtain absolute gravity data as a reference point.

Please refer to the "Contact Us" if you wish to use the raw data.

Related Information



[Enlarge Image](#)

KS-19-20

Ship Name: SHINSEI MARU

Period: 2019-10-08 - 2019-10-16

Chief Scientist: Toshi Nagata (The University of Tokyo)

Project Name: [Tohoku Ecosystem-Associated Marine Sciences (TEAMS)]

Proposal Title: Research on the disturbance and recovery process of the ecosystem in Sanriku coastal area after the Tsunami

Update History

2020-05-31

An observation data was registered.

JAMSTEC

[Site Policy](#)

[Privacy Policy](#)

[Application for Data and Samples](#)

[Data Policy](#)

What's New

[Update History](#)

[Feeds](#)

Lists

[Publication List](#)

[Amount of Public Info.](#)

Data

[Map Search](#)

[Data Tree](#)

[Detailed Search](#)

Information of the Ships

[NATSUSHIMA](#)

[KAIYO](#)

[YOKOSUKA](#)

[MIRAI](#)

[KAIREI](#)

[CHIKYU](#)

[KAIMEI](#)

[SHINSEI MARU](#)

[HAKUHO MARU](#)

Information of the Submersibles

[KAIKO](#)

[SHINKAI 2000](#)

[SHINKAI 6500](#)

[DEEP TOW](#)

[HYPER-DOLPHIN](#)

[URASHIMA](#)

[YOKOSUKA DEEP TOW](#)

[6K Camera DEEP TOW](#)

[6K Sonar DEEP TOW](#)

[KM-ROV](#)

[POWER GRAB SAMPLER](#)

[\(SHELL\)](#)

[POWER GRAB SAMPLER](#)

[\(CLOW\)](#)

[BMS](#)

Go to a Cruise Information

Cruise ID:

Go

Go to a Dive Information

Dive ID:

Go

Copyright 2011 Japan Agency for Marine-Earth Science and Technology



JAMSTEC

国立研究開発法人
海洋研究開発機構
JAPAN AGENCY FOR MARINE-EARTH SCIENCE AND TECHNOLOGY

SHINSEI MARU KS-19-20 Gravity

Last Modified: 2020-05-31

ReadMe

Cruise ID: [KS-19-20](#)

Gravity: Raw

Data Policy: [JURCAOS-JAMSTEC](#)

Observation Items: Absolute gravity

Science Keywords:

OCEANS > MARINE GEOPHYSICS > MARINE GRAVITY FIELD
SOLID EARTH > GEODETICS/GRAVITY > GRAVITY

For Using Data

Principal Investigator

Data Management Office

Use Constraints

See [Terms and Conditions](#) about constrain of use.

Data Citation

See [Terms and Conditions](#) about data citation.

Instrument

Instrument:

Shipboard gravimeter



Instrument:

Microgravimeter



Measurement System

(1) Shipboard gravity meter

The system consists of two main assemblies; the gyro-stabilized platform including the gravity sensor and the data handling & control system.

Manufacturer : Micro-g LaCoste
Model : S-177
Measuring range : 20,000 mGal
Accuracy : 1.0 mGal
Drift rate : < 3.0mGal/month
Installation : Gravity meter room

Reference: "Air-Sea Systemll Marine Gravity Meter User Manual", Micro-g LaCoste

(2) Portable gravity meter

The portable gravity meter consists of two modules; the data acquisition/control module and the gravity sensor module. The gravity sensor is enclosed in a thermostatically controlled vacuum chamber. The portable gravity meter is used to calculate the absolute gravity of the port with reference to the gravity station of the Japan Gravity Standardization Net of the Geographical Survey Institute of Japan.

Manufacturer : SCINTREX
Model : CG-5
Measurement range : 8,000 mGal
Standard deviation : 0.005 mGal
Drift rate : < 0.02 mGal/day

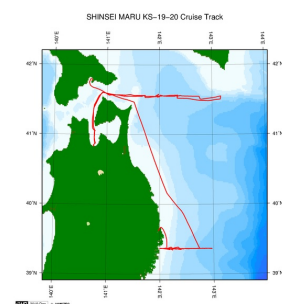
Reference:"CG-5 OPERATION MANUAL", SCINTREX

About this data

We have no plan to process the data because we could not obtain absolute gravity data as a reference point.

Please refer to the "Contact Us" if you wish to use the raw data.

Related Information



[Enlarge Image](#)

KS-19-20

Ship Name: SHINSEI MARU

Period: 2019-10-08 - 2019-10-16

Chief Scientist: Toshi Nagata (The University of Tokyo)

Project Name: [Tohoku Ecosystem-Associated Marine Sciences (TEAMS)]

Proposal Title: Research on the disturbance and recovery process of the ecosystem in Sanriku coastal area after the Tsunami

Update History

2020-05-31

An observation data was registered.

JAMSTEC

[Site Policy](#)

[Privacy Policy](#)

[Application for Data and Samples](#)

[Data Policy](#)

What's New

[Update History](#)

[Feeds](#)

Lists

[Publication List](#)

[Amount of Public Info.](#)

Data

[Map Search](#)

[Data Tree](#)

[Detailed Search](#)

Information of the Ships

[NATSUSHIMA](#)

[KAIYO](#)

[YOKOSUKA](#)

[MIRAI](#)

[KAIREI](#)

[CHIKYU](#)

[KAIMEI](#)

[SHINSEI MARU](#)

[HAKUHO MARU](#)

Information of the Submersibles

[KAIKO](#)

[SHINKAI 2000](#)

[SHINKAI 6500](#)

[DEEP TOW](#)

[HYPER-DOLPHIN](#)

[URASHIMA](#)

[YOKOSUKA DEEP TOW](#)

[6K Camera DEEP TOW](#)

[6K Sonar DEEP TOW](#)

[KM-ROV](#)

[POWER GRAB SAMPLER](#)

[\(SHELL\)](#)

[POWER GRAB SAMPLER](#)

[\(CLOW\)](#)

[BMS](#)

Go to a Cruise Information

Cruise ID:

Go

Go to a Dive Information

Dive ID:

Go

Copyright 2011 Japan Agency for Marine-Earth Science and Technology



JAMSTEC

国立研究開発法人
海洋研究開発機構
JAPAN AGENCY FOR MARINE-EARTH SCIENCE AND TECHNOLOGY

SHINSEI MARU KS-19-20 Gravity

Last Modified: 2020-05-31

ReadMe

Cruise ID: **KS-19-20**

Gravity: Raw

Data Policy: [JURCAOS-JAMSTEC](#)

Observation Items: Absolute gravity

Science Keywords:

OCEANS > MARINE GEOPHYSICS > MARINE GRAVITY FIELD
SOLID EARTH > GEODETICS/GRAVITY > GRAVITY

For Using Data

Principal Investigator

Data Management Office

Use Constraints

See [Terms and Conditions](#) about constrain of use.

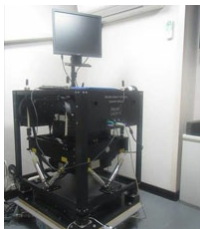
Data Citation

See [Terms and Conditions](#) about data citation.

Instrument

Instrument:

Shipboard gravimeter



Instrument:

Microgravimeter



Measurement System

(1) Shipboard gravity meter

The system consists of two main assemblies; the gyro-stabilized platform including the gravity sensor and the data handling & control system.

Manufacturer : Micro-g LaCoste

Model : S-177

Measuring range : 20,000 mGal

Accuracy : 1.0 mGal

Drift rate : < 3.0mGal/month

Installation : Gravity meter

room

Reference: "Air-Sea SystemII Marine Gravity Meter User Manual", Micro-g LaCoste

(2) Portable gravity meter

The portable gravity meter consists of two modules; the data acquisition/control module and the gravity sensor module. The gravity sensor is enclosed in a thermostatically controlled vacuum chamber. The portable gravity meter is used to calculate the absolute gravity of the port with reference to the gravity station of the Japan Gravity Standardization Net of the Geographical Survey Institute of Japan.

Manufacturer : SCINTREX

Model : CG-5

Measurement range : 8,000 mGal

Standard deviation : 0.005 mGal

Drift rate : < 0.02 mGal/day

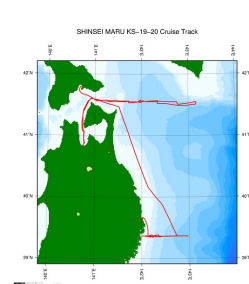
Reference:"CG-5 OPERATION MANUAL", SCINTREX

About this data

We have no plan to process the data because we could not obtain absolute gravity data as a reference point.

Please refer to the "Contact Us" if you wish to use the raw data.

Related Information



[Enlarge Image](#)

KS-19-20

Ship Name: SHINSEI MARU

Period: 2019-10-08 - 2019-10-16

Chief Scientist: Toshi Nagata (The University of Tokyo)

Project Name: [Tohoku Ecosystem-Associated Marine Sciences (TEAMS)]

Proposal Research on the disturbance and recovery process of the ecosystem in Sanriku coastal area

Title: after the Tsunami

Update History

2020-05-31 An observation data was registered.

JAMSTEC

[Site Policy](#)

[Privacy Policy](#)

[Application for Data and Samples](#)

[Data Policy](#)

[What's New](#)

Lists

[Publication List](#)

[Amount of Public Info.](#)

Data

[Map Search](#)

[Data Tree](#)

[Detailed Search](#)

Information of the Ships

[NATSUSHIMA](#)

[KAIYO](#)

[YOKOSUKA](#)

[MIRAI](#)

[KAIREI](#)

[CHIKYU](#)

Information of the Submersibles

[KAIKO](#)

[SHINKAI 2000](#)

[SHINKAI 6500](#)

[DEEP TOW](#)

[HYPER-DOLPHIN](#)

[URASHIMA](#)

Go to a Cruise Information

Cruise ID:

Go to a Dive Information

[Update History](#)
[Feeds](#)

KAIMEI
SHINSEI MARU
HAKUHO MARU

YOKOSUKA DEEP TOW
6K Camera DEEP TOW
6K Sonar DEEP TOW
KM-ROV
POWER GRAB SAMPLER
(SHELL)
POWER GRAB SAMPLER
(CLOW)
BMS

Dive ID:

Copyright 2011 Japan Agency for Marine-Earth Science and Technology



JAMSTEC 国立研究開発法人
海洋研究開発機構
JAPAN AGENCY FOR MARINE-EARTH SCIENCE AND TECHNOLOGY