

## KAIMEI KM17-09 Shipboard Acoustic Doppler Current Profiler (ADCP)

Last Modified: 2018-10-18

[ReadMe](#) [Observation Data](#) [Data Format](#)

Cruise ID: [KM17-09](#)

Shipboard Acoustic Doppler Current Profiler (ADCP): Processed (DMO)-Corrected

Data Policy: [JAMSTEC](#)

Observation Items: Depth, Absolute velocity (zonal, meridional and vertical)

Science Keywords:

OCEANS > OCEAN CIRCULATION > OCEAN CURRENTS

Cruise Report

[http://www.godac.jamstec.go.jp/catalog/data/doc\\_catalog/media/KM17-09\\_all.pdf](http://www.godac.jamstec.go.jp/catalog/data/doc_catalog/media/KM17-09_all.pdf)

### For Using Data

#### Principal Investigator

Data Management Office

#### Use Constraints

See [Terms and Conditions](#) about constrain of use.

#### Data Citation

See [Terms and Conditions](#) about data citation.

### Instrument

Instrument:

Shipboard acoustic doppler current profiler for shallow water



Instrument:

Shipboard acoustic doppler current profiler for deep water



### Overview

Acoustic Doppler Current Profiler (ADCP) transmits acoustic pulses from a transducer assembly. The transducers receive backscattered sounds from small particles floating with water currents. Using the Doppler shift principle, the backscattered sound data can be converted into components of water current velocity at multiple depths. The shipboard ADCP mounted on R/V KAIMEI can measure the speed and direction of water currents for up to 128 layers. R/V KAIMEI is equipped with two shipboard ADCP, for shallow water (ADCP-S) and for deep water (ADCP-D), and both of them are operated simultaneously. The dataset provided here is a 5-minute time average of absolute velocity data (i.e., water current velocity in geophysical coordinates) after various kinds of corrections only for ADCP-D data. This data processing was carried out by DMO. See [here](#) for detailed correction methods.

### Specifications

	ADCP-D	ADCP-S
Manufacturer:	Teledyne RD Instruments	Teledyne RD Instruments
System:	OS-ADCP 38kHz	OS-ADCP 150kHz
Frequency:	38kHz	150kHz
Configuration:	4-beam phased array	4-beam phased array
Beam angle:	30deg	30deg
Transducer Depth:	5.5m beneath calm water line	5.5m beneath calm water line
ADCP data logger:	Teledyne RD Instruments VmDas 1.49	Teledyne RD Instruments VmDas 1.49
Ship heading and attitude [instrument maker/model]:	iXBlue/PHINS	iXBlue/PHINS
Navigation [instrument maker/model]:	Fugro/StarPack-D	Fugro/StarPack-D

### ADCP configuration

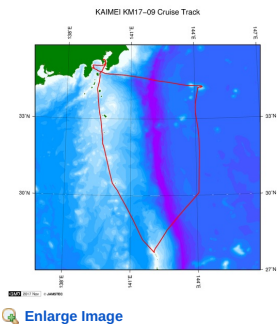
	ADCP-D	ADCP-S
Depth range:	47 m - 1,223 m (bin centers)	20 m - 372 m (bin centers)
Bin length:	24 m	8 m
Number of bins:	50	45
Blanking interval:	16 m	6 m
Sound speed calculation:	used transducer temperature during acquisition	used transducer temperature during acquisition
Correction of the alignment error [corrected angle]:	-0.312 deg	- (not calculated)
Bottom track mode:	2017/09/13 01:56 - 2017/09/14 13:40 2017/09/18 23:14 - 2017/09/21 13:48	2017/09/13 02:02 - 2017/09/13 21:17
Water track mode:	2017/09/14 13:41 - 2017/09/18 23:14	2017/09/13 21:17 - 2017/09/21 13:48

### Need raw data?

ADCP-S data was also collected in this cruise, but we have no plan to process the ADCP-S data.  
If you would like the raw data set, please contact us from "Contact Us" above.

### Related Information

☒ Cruise Data ☐ Dive Data



#### KM17-09

Ship Name: KAI MEI

Period: 2017-09-13 - 2017-09-22

Chief Scientist: Masanobu Yanagitani (JAMSTEC)

#### Update History

2018-10-18	An observation data was registerd.
2018-03-22	An observation data was registerd.

#### JAMSTEC

[Site Policy](#)  
[Privacy Policy](#)  
[Application for Data and Samples](#)  
[Data Policy](#)

[What's New](#)  
[Update History](#)  
[Feeds](#)

#### Lists

[Publication List](#)  
[Amount of Public Info.](#)

#### Data

[Map Search](#)  
[Data Tree](#)  
[Detailed Search](#)

#### Information of the Ships

[NATSUSHIMA](#)  
[KAIYO](#)  
[YOKOSUKA](#)  
[MIRAI](#)  
[KAIREI](#)  
[CHIKYU](#)  
[KAI MEI](#)  
[SHINSEI MARU](#)  
[HAKUHO MARU](#)

#### Information of the Submersibles

[KAIKO](#)  
[SHINKAI 2000](#)  
[SHINKAI 6500](#)  
[DEEP TOW](#)  
[HYPER-DOLPHIN](#)  
[URASHIMA](#)  
[YOKOSUKA DEEP TOW](#)  
[6K Camera DEEP TOW](#)  
[6K Sonar DEEP TOW](#)  
[KM-ROV](#)  
[POWER GRAB SAMPLER \(SHELL\)](#)  
[POWER GRAB SAMPLER \(CLOW\)](#)  
[BMS](#)

#### Go to a Cruise Information

Cruise ID:

#### Go to a Dive Information

Dive ID:

Copyright 2011 Japan Agency for Marine-Earth Science and Technology



**JAMSTEC** 国立研究開発法人  
海洋研究開発機構  
JAPAN AGENCY FOR MARINE-EARTH SCIENCE AND TECHNOLOGY

## KAIMEI KM17-09 Shipboard Acoustic Doppler Current Profiler (ADCP)

Last Modified: 2018-10-18

[ReadMe](#)   [Observation Data](#)   [Data Format](#)

 Cruise ID: **KM17-09**

Shipboard Acoustic Doppler Current Profiler (ADCP) Processed (DMO)-Corrected

 Data Policy: **JAMSTEC**

### ADCP Corrected,Qced 3

#### About data format

We provide the dataset as AWI Ocean Data View format (generic spreadsheet format).

 Ocean Data View : <http://odv.awi.de/>

 Japanese Guide : [http://www.jodc.go.jp/jodc\\_pub/digitalpub\\_j.html](http://www.jodc.go.jp/jodc_pub/digitalpub_j.html)

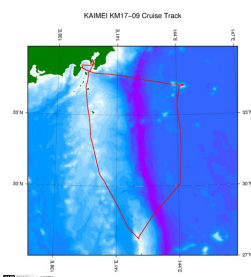
#### Format Description (tab space separated)

Data No.	Content	Unit	Format	Remarks
1	CruiseID	i6		Cruise name
2	Station	i12		Station name set to be measurement time [YYYYMMDDhhmm]
3	Type	i1		Always "B", due to the number of data acquisition layers lower than 250-layer
4	Day	i10		Measurement day(UTC) [MM/DD/YYYY]
5	Time	i5		Measurement time [Center of average time](UTC) [ hh:mm]
6	Longitude	degree	f8.4	Position at the measurement time [0 - 360]
7	Latitude	degree	f8.4	Position at the measurement time [North: +, South: -]
8	Bottom depth	m	f6.1	Set to be "0" if there is no data
9	Measurement depth	m	f7.2	Depth of measurement layer
10	Quality flag	i1		"0"=good, "4"=questionable, "8"=bad
11	Current speed (zonal)	m/sec	f8.4	5-minute average of zonal component of absolute velocity [Eastward: +] [Only good data of more than 120 count of ping correlation and more than 25 count of echo intensity were used for the average]
12	Quality flag	i1		"0"=good, "4"=questionable, "8"=bad
13	Current speed (meridional)	m/sec	f8.4	5-minute average of meridional component of absolute velocity [Northward: +] [Only good data of more than 120 count of ping correlation and more than 25 count of echo intensity were used for the average]
14	Quality flag	i1		"0"=good, "4"=questionable, "8"=bad
15	Current speed (vertical)	m/sec	f8.4	5-minute average of vertical component of absolute velocity [Upward: +] [Only good data of more than 120 count of ping correlation and more than 25 count of echo intensity were used for the average]
16	Quality flag	i1		"0"=good, "4"=questionable, "8"=bad
17	Speed of absolute velocity	m/sec	f7.4	Magnitude of absolute velocity
18	Quality flag	i1		"0"=good, "4"=questionable, "8"=bad
19	Current direction	degree	f5.1	Current direction of absolute velocity [0 to 360]
20	Quality flag	i1		"0"=good, "4"=questionable, "8"=bad
21	Error velocity	m/sec	f8.4	5-minute average of error velocity
22	Quality flag	i1		"0"=good, "4"=questionable, "8"=bad
23	Correlation	count	f5.1	5-minute average by 4-beam average correlation(send beam - received beam) [max:250count] [The data used to calculate velocity were used to average]
24	Quality flag	i1		"0"=good, "4"=questionable, "8"=bad
25	Echo Intensity	count	f5.1	5-minute average by 4-beam average echo intensity [max:120count] [The data used to calculate velocity were used to average]
26	Quality flag	i1		"0"=good, "4"=questionable, "8"=bad
27	Percentgood	%	f5.1	Rate of the good data that is used velocity calculation to the all data [0 to 100]
28	Quality flag	i1		"0"=good, "4"=questionable, "8"=bad
29	Ship's speed	m/sec	f7.4	Ship's speed by GPS
30	Quality flag	i1		"0"=good, "4"=questionable, "8"=bad
*31	Standard deviation of the Ship's Speed	m/sec	f5.2	Standard deviation of the Ship's Speed in the 5-minute
32	Quality flag	i1		"0"=good, "4"=questionable, "8"=bad
*33	Standard deviation of the Ship's Heading	degree	f6.2	Standard deviation of the Ship's Heading in the 5-minute
34	Quality flag	i1		"0"=good, "4"=questionable, "8"=bad
*35	Standard deviation of the Ship's Roll	degree	f5.2	Standard deviation of the Ship's Roll in the 5-minute
36	Quality flag	i1		"0"=good, "4"=questionable, "8"=bad
*37	Standard deviation of the ship's pitch	degree	f5.2	Standard deviation of the ship's pitch in the 5-minute
38	Quality flag	i1		"0"=good, "4"=questionable, "8"=bad

\* Standard deviations of the ship's speed and the ship's heading, roll, and pitch in each 5-minute average section are also included in the dataset, since data quality of ADCP velocity might be dropped due to the high variabilities of each variables. However, DMO doesn't make any evaluation for the ADCP data by them.

#### Related Information

[Cruise Data](#) [Dive Data](#)



[Enlarge Image](#)

#### KM17-09

Ship Name: KAIMEI

Period: 2017-09-13 - 2017-09-22

Chief Scientist: Masanobu Yanagitani (JAMSTEC)

#### Update History

2018-10-18	An observation data was registered.
2018-03-22	An observation data was registered.

#### JAMSTEC

[Site Policy](#)  
[Privacy Policy](#)  
[Application for Data and Samples](#)  
[Data Policy](#)

[What's New](#)  
[Update History](#)  
[Feeds](#)

#### Lists

[Publication List](#)  
[Amount of Public Info.](#)

#### Data

[Map Search](#)  
[Data Tree](#)  
[Detailed Search](#)

#### Information of the Ships

[NATSUSHIMA](#)  
[KAIO](#)  
[YOKOSUKA](#)  
[MIRAI](#)  
[KAIREI](#)  
[CHIKYU](#)  
[KAIMEI](#)  
[SHINSEI MARU](#)  
[HAKUHO MARU](#)

#### Information of the Submersibles

[KAIO](#)  
[SHINKAI 2000](#)  
[SHINKAI 6500](#)  
[DEEP TOW](#)  
[HYPER-DOLPHIN](#)  
[URASHIMA](#)  
[YOKOSUKA DEEP TOW](#)  
[6K Camera DEEP TOW](#)  
[6K Sonar DEEP TOW](#)  
[KM-ROV](#)  
[POWER GRAB SAMPLER \(SHELL\)](#)  
[POWER GRAB SAMPLER \(CLOW\)](#)  
[BMS](#)

#### Go to a Cruise Information

Cruise ID:

#### Go to a Dive Information

Dive ID:

Copyright 2011 Japan Agency for Marine-Earth Science and Technology



**JAMSTEC**  
JAPAN AGENCY FOR MARINE-EARTH SCIENCE AND TECHNOLOGY

国立研究開発法人  
海洋研究開発機構

## KAIMEI KM17-09 Shipboard Acoustic Doppler Current Profiler (ADCP)

Last Modified: 2018-10-18

[ReadMe](#) [Observation Data](#) [Data Format](#)

Cruise ID: [KM17-09](#)

Shipboard Acoustic Doppler Current Profiler (ADCP): Processed (DMO)-Corrected

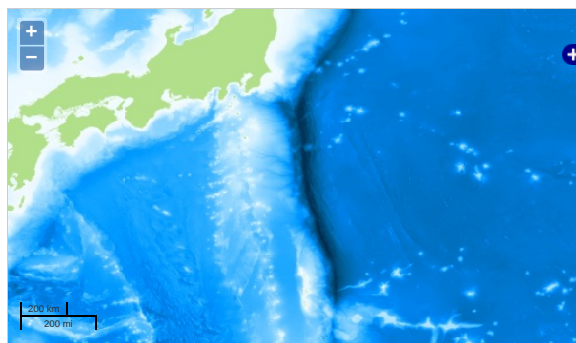
Data Policy: [JAMSTEC](#)

Observation Items: Depth, Absolute velocity (zonal, meridional and vertical)

Science Keywords:

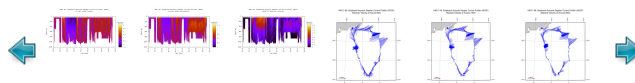
OCEANS > OCEAN CIRCULATION > OCEAN CURRENTS

### Observation Map

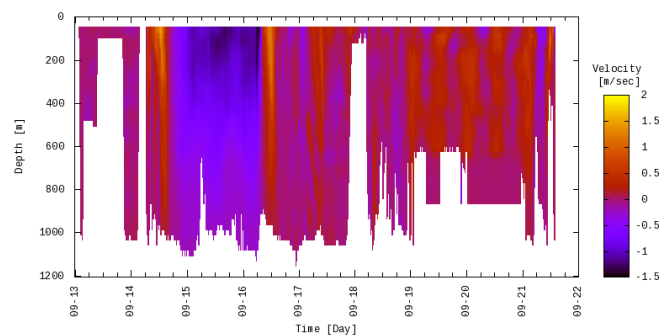


... Observation Line ... Navigation ... Observation, Dive Point, Hole

### Figures



KM17-09: Shipboard Acoustic Doppler Current Profiler (ADCP)  
Current speed (zonal)



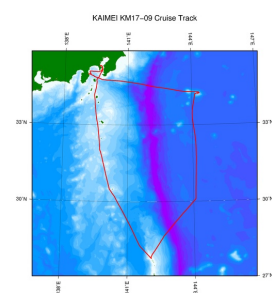
### Data List

File names

☐ KM17-09.txt

### Related Information

☒ Cruise Data ☐ Dive Data



[KM17-09](#)

Ship Name: KAIMEI

Period: 2017-09-13 - 2017-09-22

Chief Scientist: Masanobu Yanagitani (JAMSTEC)

 [Enlarge Image](#)

#### Update History

2018-10-18	An observation data was registerd.
2018-03-22	An observation data was registerd.

JAMSTEC  
Site Policy  
Privacy Policy  
Application for Data and Samples  
Data Policy  
  
What's New  
Update History  
Feeds

Lists  
Publication List  
Amount of Public Info.  
  
Data  
Map Search  
Data Tree  
Detailed Search

Information of the Ships  
NATSUSHIMA  
KAIYO  
YOKOSUKA  
MIRAI  
KAIREI  
CHIKYU  
KAIMEI  
SHINSEI MARU  
HAKUHO MARU

Information of the Submersibles  
KAIKO  
SHINKAI 2000  
SHINKAI 6500  
DEEP TOW  
HYPER-DOLPHIN  
URASHIMA  
YOKOSUKA DEEP TOW  
6K Camera DEEP TOW  
6K Sonar DEEP TOW  
KM-ROV  
POWER GRAB SAMPLER (SHELL)  
POWER GRAB SAMPLER (CLOW)  
BMS

#### Go to a Cruise Information

Cruise ID:

#### Go to a Dive Information

Dive ID:

Copyright 2011 Japan Agency for Marine-Earth Science and Technology



**JAMSTEC** 国立研究開発法人  
海洋研究開発機構  
JAPAN AGENCY FOR MARINE EARTH SCIENCE AND TECHNOLOGY